

Converting Colors

Android(4293763508)

Have a look what the booklet for
Android(4293763508) contains.

Android(4293763508)	3
<i>Conversions</i>	4
<i>Details</i>	6
<i>Harmonies</i>	11
<i>Previews</i>	23
<i>Color Blindness Simulation</i>	26
<i>CSS Examples</i>	29

Color

Android(4293763508)

Conversions

Conversions Part 1

Format	Color
Hex	EDA1B4
RGB	237, 161, 180
RGB Percent	93%, 63%, 71%
CMY	0.0706, 0.3686, 0.2941
CMYK	0.00, 0.32, 0.24, 0.07
HSL	345°, 68%, 78%
HSV	345°, 32%, 93%
XYZ	55.9081, 46.7896, 49.2646
YIQ	185.8900, 39.1970, 22.0210

Conversions

Conversions Part 2

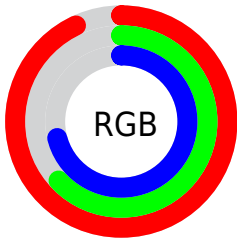
Format	Color
R _Y B	237, 161, 180
Decimal	15573428
CIE Lab	74.05, 30.77, 1.73
CIE LCh	74, 30.818, 3.213
Yxy	46.7896, 0.3679, 0.3079
Android (android.graphics.Color)	4293763508 (0xFFEDA1B4)
YUV	185.8900, -2.9038, 44.8235
Hunter-Lab	68.4029, 26.1894, 5.1806

Details

The Android color `4293763508` is a light color, and the websafe version is hex `CC9999`. A complement of this color would be `4288802266`, and the grayscale version is `4290427578`.

A 20% lighter version of the original color is `4294957292`, and `4290014335` is the 20% darker color. If you saturate the color by 10%, you get `4293757346`, and if you desaturate by 10%, it is `4293769670`.

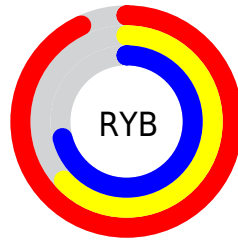
Distribution



Red (93%)

Green (63%)

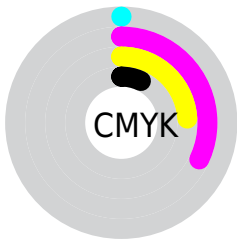
Blue (71%)



Red (93%)

Yellow (63%)

Blue (71%)

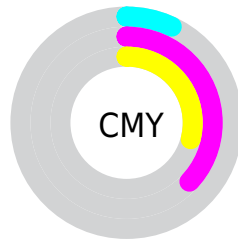


Cyan (0%)

Magenta (32%)

Yellow (24%)

Black (7%)



Cyan (7%)

Magenta (37%)

Yellow (29%)

Brightness & Saturation Gradients

These gradients show how the Android color 4293763508 changes by changing the brightness by 10 percent. The first figure shows a shift by +10% for each color and the second figure -10%.

Similar to the brightness gradients but the following saturation gradients show a change of the Android color 4293763508 by changing the saturation by 10% instead.

 4293763508

 4293763508

4294967295

 4291856025

 4294957292

 4290014335

 4294964735

 4288172902

 4286397262

 4284621624

 4282976802

 4281401356

 4279042048

 4278190080

 4293763508

 4293763508

 4293757346

 4293769670

 4293751440

 4293775576

 4293745279

 4293781737

 4293739117

 4293787643

 4293732955

 4293787647

 4293727049

 4293722171

Harmonies

Analogous

The Analogous color harmony consists of three colors that are next to each other on the color wheel.



4292715984



4293763508



4293764248

Triad

The Triadic color harmony groups three colors that are evenly spaced from another and form a triangle on the color wheel.



4293763508



4289314438



4285513960

Complementary

The Complementary color scheme is a pair of colors which are on the opposite of each other on the color wheel.



4293763508



4288802266

Split Complementary

Split-complementary colors differ from the complementary color scheme. The scheme consists of three colors, the original color and two neighbors of the complement color.



4284270036



4293763508



4287153052

Square

The Square scheme is like the rectangle color scheme, but the four colors are evenly spaced on the color wheel.



4293763508



4291278205



4285187768



4288067822

Rectangle

The Rectangle color scheme consists of four colors that form a rectangle on the color wheel.



4293763508



4293241226



4285187768



4284859106

Sweetspot

The Sweet Spot groups the original color and five complimentary colors.



4293763508



4294960876



4292518381



4286607476



4278190080



4286611584

Same Dimension

The Same Dimension uses a secret algorithm to generate beautiful new colors.



4293763508



4294942390



4293768353



4285885037



4290052141



4281729037

Inverse Universe

The Inverse Universe completely reimagines the original color for something new.



4293763508



4294942390



4288797421



4285885037



4290052141



4281729037

Previews

White Background



This preview shows how the Android color 4293763508 looks on a white background.

Color Contrast Check

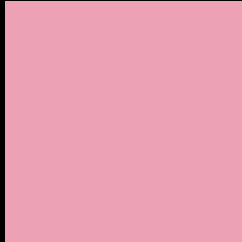
Large Text (above 18pt) WCAG AA × Fail

Any Text WCAG AA × Fail

Large Text (above 18pt) WCAG AAA × Fail

Any Text WCAG AAA × Fail

Black Background



This preview shows how the Android color 4293763508 looks on a black background.

Color Contrast Check

Large Text (above 18pt) WCAG AA ✓ Pass

Any Text WCAG AA ✓ Pass

Large Text (above 18pt) WCAG AAA ✓ Pass

Any Text WCAG AAA ✓ Pass

If you want to check with other color combinations, try the [Color Contrast Checker](#).

Android 4293763508 Background



This preview shows how black text looks on a background with the Android color 4293763508.



This preview shows how white text looks on a background with the Android color 4293763508.

Color Blindness Simulation

Color vision deficiency is a very complex topic, and I could not describe the different causes any better than Wikipedia does, so if you want to learn more, you should check out their [article about color blindness](#).

Dichromacy



Original Color
4293763508

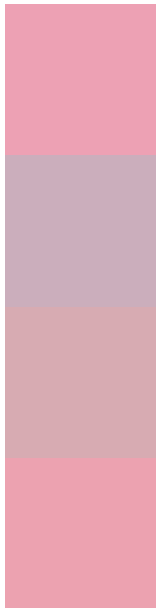
Protanopia
4290229696

Deuteranopia
4291473585



Tritanopia
4293698222

Trichromacy



Original Color
4293763508

Protanomaly
4291538620

Deuteranomaly
4292324274

Tritanomaly
4293698224

Monochromacy



Original Color
4293763508

Achromatopsia
4290427578

Achromatomaly
4291670456

CSS Examples

Text

The CSS property to change the color of the text to Android 4293763508 is called "color". The color property can be set on classes, ids or directly on the HTML element.

This example shows how text in the color `rgb(237, 161, 180)` looks like.

```
.text, #text, p{  
    color:rgb(237, 161, 180)  
}
```

If you want to add a text shadow in that color use the text-shadow property, you can generate a text shadow directly with our [CSS Text Shadow Generator](#).

Here you see how black text with a 4 pixel rgb(237, 161, 180) colored shadow looks like.

```
.shadow{ text-shadow: 4px 4px 2px rgb(237, 161, 180) }
```

Border

The CSS property to change the border of an element to Android 4293763508 is called "border". The border property can be set on classes, ids or directly on the HTML element.

This example shows the color as border, it can be applied via the CSS property "border" or "border-color".

```
.border, #border, table{ border:4px solid rgb(237, 161, 180) }
```

If only the border color should be changed use the property `border-color`.

```
.border{ border-color:rgb(237, 161, 180) }
```

If you want to add a box shadow in that color use:

Here you see how a box with a 4 pixel `rgb(237, 161, 180)` colored shadow looks like.

```
.boxshadow{ -moz-box-shadow:4px 4px 4px  
4px rgb(237, 161, 180); -webkit-box-  
shadow:4px 4px 4px 4px rgb(237, 161, 180);  
box-shadow:4px 4px 4px 4px rgb(237, 161,  
180) }
```

Background

The CSS property to change the background color of an element to Android 4293763508 is called "background". The background property can be set on classes, ids or directly on the HTML element.

```
.background, #background, body{  
background: rgb(237, 161, 180) }
```

If only the background color should be changed can be used:

```
.background{ background-color: rgb(237,  
161, 180) }
```

This example shows the color as background, it is applied via the CSS property "background".

To optimize and compress your CSS code, you can use our [online CSS compressor and optimizer](#) based on csstidy. If you want to create a linear or radial gradient as background or border, check our [CSS Gradient Generator](#).

Hey! You found this booklet interesting? Support Converting Colors with the new Membership Option!

The pro membership hides all ads, plus gives you double the colors in the color bucket, and more awesome pro features!

[Learn more, Memberships starting at \\$2.50/m!](#)

**Follow me
on Twitter!**

@ConvertingColor