

# Converting Colors

Android(4293766582)

Have a look what the booklet for  
Android(4293766582) contains.

<b>Android(4293766582)</b> .....	3
<i><b>Conversions</b></i> .....	4
<i><b>Details</b></i> .....	6
<i><b>Harmonies</b></i> .....	11
<i><b>Previews</b></i> .....	23
<i><b>Color Blindness Simulation</b></i> .....	26
<i><b>CSS Examples</b></i> .....	29

# **Color**

**Android(4293766582)**

# Conversions

## Conversions Part 1

Format	Color
Hex	EDADB6
RGB	237, 173, 182
RGB Percent	93%, 68%, 71%
CMY	0.0706, 0.3216, 0.2863
CMYK	0.00, 0.27, 0.23, 0.07
HSL	352°, 64%, 80%
HSV	352°, 27%, 93%
XYZ	58.3121, 51.2691, 51.0785
YIQ	193.1620, 35.2550, 16.3670

# Conversions

## Conversions Part 2

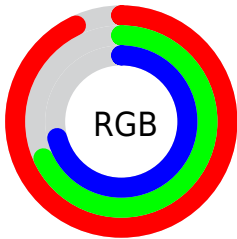
Format	Color
R <sub>Y</sub> B	237, 173, 182
Decimal	15576502
CIE Lab	76.84, 24.68, 4.67
CIE LCh	77, 25.116, 10.716
Yxy	51.2691, 0.3630, 0.3191
Android (android.graphics.Color)	4293766582 (0xFFEDADB6)
YUV	193.1620, -5.5029, 38.4459
Hunter-Lab	71.6024, 20.0639, 7.8264

# Details

The Android color `4293766582` is a light color, and the websafe version is hex `CC9999`. A complement of this color would be `4289588708`, and the grayscale version is `4290888129`.

A 20% lighter version of the original color is `4294960622`, and `4290017409` is the 20% darker color. If you saturate the color by 10%, you get `4293760418`, and if you desaturate by 10%, it is `4293772746`.

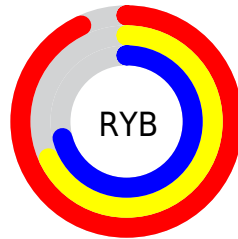
# Distribution



Red (93%)

Green (68%)

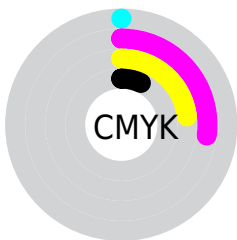
Blue (71%)



Red (93%)

Yellow (68%)

Blue (71%)

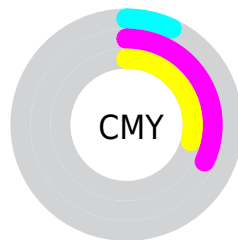


Cyan (0%)

Magenta (27%)

Yellow (23%)

Black (7%)



Cyan (7%)

Magenta (32%)

Yellow (29%)

# Brightness & Saturation Gradients

These gradients show how the Android color 4293766582 changes by changing the brightness by 10 percent. The first figure shows a shift by +10% for each color and the second figure -10%.

Similar to the brightness gradients but the following saturation gradients show a change of the Android color 4293766582 by changing the saturation by 10% instead.



 4293766582

 4293766582

4294967295

 4291859099

 4294960622


 4290017409

 4288175976

 4286465872

 4284755769

 4283046180

 4281467406

 4279697408

 4278190080

 4293766582

 4293766582

 4293760418

 4293772746

 4293754509

 4293778655

 4293748345

 4293784819

 4293742181

 4293787647

 4293736272

 4293730108

 4293723943

 4293722145

# Harmonies

## Analogous

The Analogous color harmony consists of three colors that are next to each other on the color wheel.



4293111758



4293766582



4293570720

# Triad

The Triadic color harmony groups three colors that are evenly spaced from another and form a triangle on the color wheel.



4293766582



4289512858



4287612137

# Complementary

The Complementary color scheme is a pair of colors which are on the opposite of each other on the color wheel.



4293766582



4289588708

# Split Complementary

Split-complementary colors differ from the complementary color scheme. The scheme consists of three colors, the original color and two neighbors of the complement color.



4286433755



4293766582



4287810222

# Square

The Square scheme is like the rectangle color scheme, but the four colors are evenly spaced on the color wheel.



4293766582



4291280784



4286565317



4289576427

# Rectangle

The Rectangle color scheme consists of four colors that form a rectangle on the color wheel.



4293766582



4293047702



4286565317



4287088357

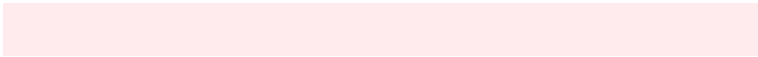


# Sweetspot

The Sweet Spot groups the original color and five complimentary colors.



4293766582



4294962157



4293111277



4286608245



4278190080



4286611584



# Same Dimension

The Same Dimension uses a secret algorithm to generate beautiful new colors.



4293766582



4294946233



4293772205



4285885035



4290052121



4281729032



# Inverse Universe

The Inverse Universe completely reimagines the original color for something new.



4293766582



4294946233



4289583085



4285885035



4290052121

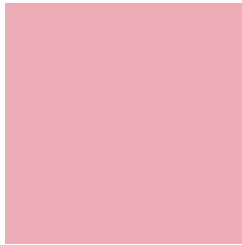


4281729032



# Previews

## White Background



This preview shows how the Android color 4293766582 looks on a white background.

## Color Contrast Check

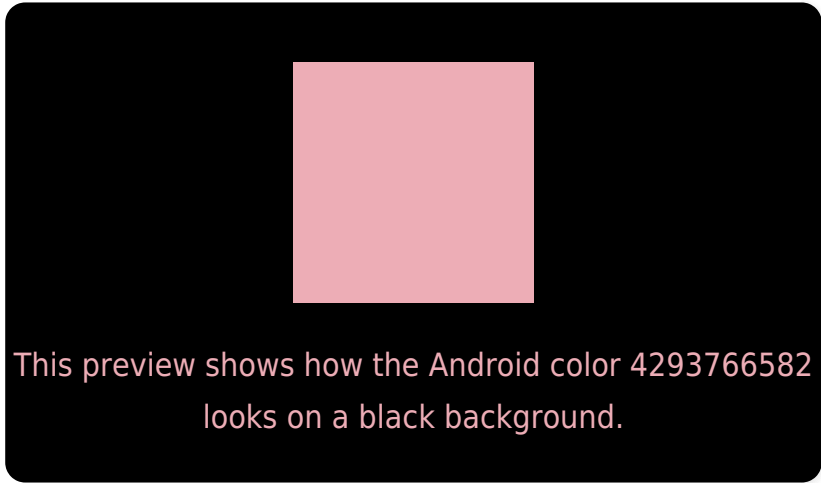
Large Text (above 18pt) WCAG AA × Fail

Any Text WCAG AA × Fail

Large Text (above 18pt) WCAG AAA × Fail

Any Text WCAG AAA × Fail

# Black Background



## Color Contrast Check

Large Text (above 18pt) WCAG AA ✓ Pass

Any Text WCAG AA ✓ Pass

Large Text (above 18pt) WCAG AAA ✓ Pass

Any Text WCAG AAA ✓ Pass

If you want to check with other color combinations, try the [Color Contrast Checker](#).



# Android 4293766582 Background



This preview shows how black text looks on a background with the Android color 4293766582.



This preview shows how white text looks on a background with the Android color 4293766582.

# Color Blindness Simulation

Color vision deficiency is a very complex topic, and I could not describe the different causes any better than Wikipedia does, so if you want to learn more, you should check out their [article about color blindness](#).

## Dichromacy



**Original Color**  
4293766582

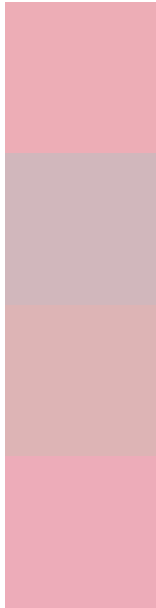
**Protanopia**  
4290887103

**Deuteranopia**  
4292130996



**Tritanopia**  
4293766330

# Trichromacy



**Original Color**  
4293766582

**Protanomaly**  
4291934140

**Deuteranomaly**  
4292719797

**Tritanomaly**  
4293766329

# Monochromacy



**Original Color**  
4293766582

**Achromatopsia**  
4290888129

**Achromatomaly**  
4291934909

# CSS Examples

## Text

The CSS property to change the color of the text to Android 4293766582 is called "color". The color property can be set on classes, ids or directly on the HTML element.

This example shows how text in the color `rgb(237, 173, 182)` looks like.

```
.text, #text, p{  
    color:rgb(237, 173, 182)  
}
```

If you want to add a text shadow in that color use the text-shadow property, you can generate a text shadow directly with our [CSS Text Shadow Generator](#).

Here you see how black text with a 4 pixel rgb(237, 173, 182) colored shadow looks like.

```
.shadow{ text-shadow: 4px 4px 2px rgb(237, 173, 182) }
```

## Border

The CSS property to change the border of an element to Android 4293766582 is called "border". The border property can be set on classes, ids or directly on the HTML element.

This example shows the color as border, it can be applied via the CSS property "border" or "border-color".

```
.border, #border, table{ border:4px solid rgb(237, 173, 182) }
```

If only the border color should be changed use the property `border-color`.

```
.border{ border-color:rgb(237, 173, 182) }
```

If you want to add a box shadow in that color use:

Here you see how a box with a 4 pixel `rgb(237, 173, 182)` colored shadow looks like.

```
.boxshadow{ -moz-box-shadow:4px 4px 4px  
4px rgb(237, 173, 182); -webkit-box-  
shadow:4px 4px 4px 4px rgb(237, 173, 182);  
box-shadow:4px 4px 4px 4px rgb(237, 173,  
182) }
```

# Background

The CSS property to change the background color of an element to Android 4293766582 is called "background". The background property can be set on classes, ids or directly on the HTML element.

```
.background, #background, body{  
background: rgb(237, 173, 182) }
```

If only the background color should be changed can be used:

```
.background{ background-color: rgb(237,  
173, 182) }
```

This example shows the color as background, it is applied via the CSS property "background".

To optimize and compress your CSS code, you can use our [online CSS compressor and optimizer](#) based on csstidy. If you want to create a linear or radial gradient as background or border, check our [CSS Gradient Generator](#).



Hey! You found this booklet interesting? Support Converting Colors with the new Membership Option!

The pro membership hides all ads, plus gives you double the colors in the color bucket, and more awesome pro features!

**[Learn more, Memberships starting at \\$2.50/m!](#)**

**Follow me  
on Twitter!**

@ConvertingColor