

Converting Colors

Android(4293767097)

Have a look what the booklet for
Android(4293767097) contains.

Android(4293767097)	3
<i>Conversions</i>	4
<i>Details</i>	6
<i>Harmonies</i>	11
<i>Previews</i>	23
<i>Color Blindness Simulation</i>	26
<i>CSS Examples</i>	29

Color

Android(4293767097)

Conversions

Conversions Part 1

Format	Color
Hex	EDAFB9
RGB	237, 175, 185
RGB Percent	93%, 69%, 73%
CMY	0.0706, 0.3137, 0.2745
CMYK	0.00, 0.26, 0.22, 0.07
HSL	350°, 63%, 81%
HSV	350°, 26%, 93%
XYZ	59.0120, 52.1673, 52.8580
YIQ	194.6780, 33.7420, 16.2540

Conversions

Conversions Part 2

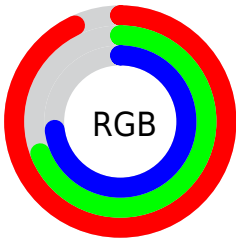
Format	Color
R _Y B	237, 175, 185
Decimal	15577017
CIE Lab	77.38, 24.05, 3.82
CIE LCh	77, 24.348, 9.016
Yxy	52.1673, 0.3597, 0.3180
Android (android.graphics.Color)	4293767097 (0xFFEDAFB9)
YUV	194.6780, -4.7713, 37.1164
Hunter-Lab	72.2269, 19.4439, 7.1685

Details

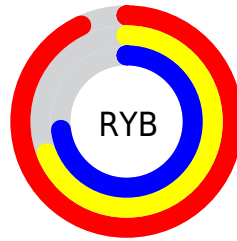
The Android color `4293767097` is a light color, and the websafe version is hex `CC9999`. A complement of this color would be `4289719779`, and the grayscale version is `4291019715`.

A 20% lighter version of the original color is `4294961137`, and `4290017924` is the 20% darker color. If you saturate the color by 10%, you get `4293760933`, and if you desaturate by 10%, it is `4293773261`.

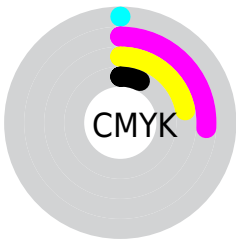
Distribution



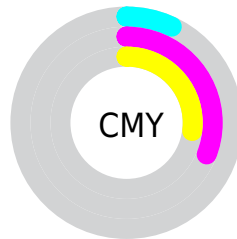
- Red (93%)
- Green (69%)
- Blue (73%)



- Red (93%)
- Yellow (69%)
- Blue (73%)



- Cyan (0%)
- Magenta (26%)
- Yellow (22%)
- Black (7%)



- Cyan (7%)
- Magenta (31%)
- Yellow (27%)

Brightness & Saturation Gradients

These gradients show how the Android color 4293767097 changes by changing the brightness by 10 percent. The first figure shows a shift by +10% for each color and the second figure -10%.

Similar to the brightness gradients but the following saturation gradients show a change of the Android color 4293767097 by changing the saturation by 10% instead.

 4293767097

 4293767097

4294967295

 4291859614

 4294961137


 4290017924

 4288242027

 4286466387

 4284756284

 4283112230

 4281467921

 4279894017

 4278190080

 4293767097

 4293767097

 4293760933

 4293773261

 4293755025

 4293779169

 4293748861

 4293785333

 4293742697

 4293787647

 4293736534

 4293730626

 4293724462

 4293722150

Harmonies

Analogous

The Analogous color harmony consists of three colors that are next to each other on the color wheel.



4293046736



4293767097



4293636772

Triad

The Triadic color harmony groups three colors that are evenly spaced from another and form a triangle on the color wheel.



4293767097



4289775260



4287743721

Complementary

The Complementary color scheme is a pair of colors which are on the opposite of each other on the color wheel.



4293767097



4289719779

Split Complementary

Split-complementary colors differ from the complementary color scheme. The scheme consists of three colors, the original color and two neighbors of the complement color.



4286630619



4293767097



4288138158

Square

The Square scheme is like the rectangle color scheme, but the four colors are evenly spaced on the color wheel.



4293767097



4291412115



4286893253



4289642475

Rectangle

The Rectangle color scheme consists of four colors that form a rectangle on the color wheel.



4293767097



4293179033



4286893253



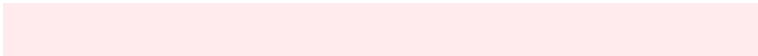
4287219941

Sweetspot

The Sweet Spot groups the original color and five complimentary colors.



4293767097



4294962158



4293111789



4286608245



4278190080



4286611584

Same Dimension

The Same Dimension uses a secret algorithm to generate beautiful new colors.



4293767097



4294947005



4293772463



4285885035



4290052125



4281729033

Inverse Universe

The Inverse Universe completely reimagines the original color for something new.



4293767097



4294947005



4289714413



4285885035



4290052125



4281729033

Previews

White Background



This preview shows how the Android color 4293767097 looks on a white background.

Color Contrast Check

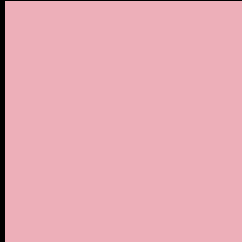
Large Text (above 18pt) WCAG AA × Fail

Any Text WCAG AA × Fail

Large Text (above 18pt) WCAG AAA × Fail

Any Text WCAG AAA × Fail

Black Background



This preview shows how the Android color 4293767097 looks on a black background.

Color Contrast Check

Large Text (above 18pt) WCAG AA ✓ Pass

Any Text WCAG AA ✓ Pass

Large Text (above 18pt) WCAG AAA ✓ Pass

Any Text WCAG AAA ✓ Pass

If you want to check with other color combinations, try the [Color Contrast Checker](#).

Android 4293767097 Background



This preview shows how black text looks on a background with the Android color 4293767097.



This preview shows how white text looks on a background with the Android color 4293767097.

Color Blindness Simulation

Color vision deficiency is a very complex topic, and I could not describe the different causes any better than Wikipedia does, so if you want to learn more, you should check out their [article about color blindness](#).

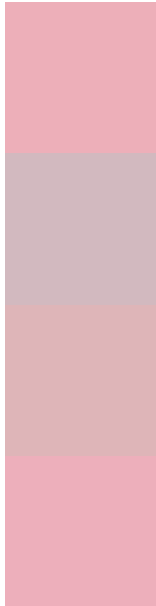
Dichromacy





Tritanopia
4293767100

Trichromacy



Original Color
4293767097

Protanomaly
4292000191

Deuteranomaly
4292785592

Tritanomaly
4293767099

Monochromacy



Original Color
4293767097

Achromatopsia
4291019715

Achromatomaly
4292000959

CSS Examples

Text

The CSS property to change the color of the text to Android 4293767097 is called "color". The color property can be set on classes, ids or directly on the HTML element.

This example shows how text in the color `rgb(237, 175, 185)` looks like.

```
.text, #text, p{  
    color:rgb(237, 175, 185)  
}
```

If you want to add a text shadow in that color use the text-shadow property, you can generate a text shadow directly with our [CSS Text Shadow Generator](#).

Here you see how black text with a 4 pixel rgb(237, 175, 185) colored shadow looks like.

```
.shadow{ text-shadow: 4px 4px 2px rgb(237, 175, 185) }
```

Border

The CSS property to change the border of an element to Android 4293767097 is called "border". The border property can be set on classes, ids or directly on the HTML element.

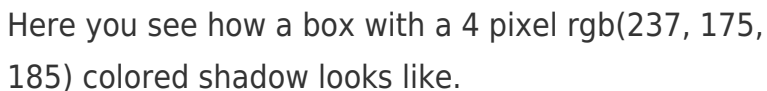
This example shows the color as border, it can be applied via the CSS property "border" or "border-color".

```
.border, #border, table{ border:4px solid rgb(237, 175, 185) }
```

If only the border color should be changed use the property `border-color`.

```
.border{ border-color:rgb(237, 175, 185) }
```

If you want to add a box shadow in that color use:



Here you see how a box with a 4 pixel `rgb(237, 175, 185)` colored shadow looks like.

```
.boxshadow{ -moz-box-shadow:4px 4px 4px  
4px rgb(237, 175, 185); -webkit-box-  
shadow:4px 4px 4px 4px rgb(237, 175, 185);  
box-shadow:4px 4px 4px 4px rgb(237, 175,  
185) }
```

Background

The CSS property to change the background color of an element to Android 4293767097 is called "background". The background property can be set on classes, ids or directly on the HTML element.

```
.background, #background, body{  
background: rgb(237, 175, 185) }
```

If only the background color should be changed can be used:

```
.background{ background-color: rgb(237,  
175, 185) }
```

This example shows the color as background, it is applied via the CSS property "background".

To optimize and compress your CSS code, you can use our [online CSS compressor and optimizer](#) based on csstidy. If you want to create a linear or radial gradient as background or border, check our [CSS Gradient Generator](#).

Hey! You found this booklet interesting? Support Converting Colors with the new Membership Option!

The pro membership hides all ads, plus gives you double the colors in the color bucket, and more awesome pro features!

[Learn more, Memberships starting at \\$2.50/m!](#)

**Follow me
on Twitter!**

@ConvertingColor