

# Converting Colors

Android(4293770989)

Have a look what the booklet for  
Android(4293770989) contains.

<b>Android(4293770989)</b> .....	3
<i><b>Conversions</b></i> .....	4
<i><b>Details</b></i> .....	6
<i><b>Harmonies</b></i> .....	11
<i><b>Previews</b></i> .....	23
<i><b>Color Blindness Simulation</b></i> .....	26
<i><b>CSS Examples</b></i> .....	29

# **Color**

**Android(4293770989)**

# Conversions

## Conversions Part 1

Format	Color
Hex	EDBEED
RGB	237, 190, 237
RGB Percent	93%, 75%, 93%
CMY	0.0706, 0.2549, 0.0706
CMYK	0.00, 0.20, 0.00, 0.07
HSL	300°, 57%, 84%
HSV	300°, 20%, 93%
XYZ	68.6246, 60.9459, 88.2676
YIQ	209.4110, 12.9250, 24.5810

# Conversions

## Conversions Part 2

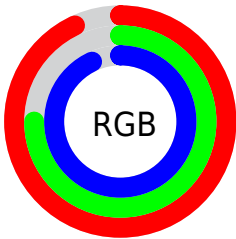
<b>Format</b>	<b>Color</b>
R <sub>Y</sub> B	237, 190, 237
Decimal	15580909
CIE Lab	82.35, 24.64, -16.92
CIE LCh	82, 29.885, 325.524
Yxy	60.9459, 0.3150, 0.2798
Android (android.graphics.Color)	4293770989 (0xFFEDBEED)
YUV	209.4110, 13.6014, 24.1956
Hunter-Lab	78.0678, 20.2895, -12.3889

# Details

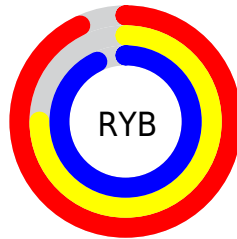
The Android color `4293770989` is a light color, and the websafe version is hex `FFCCFF`. A complement of this color would be `4290702782`, and the grayscale version is `4291940817`.

A 20% lighter version of the original color is `4294965247`, and `4290087093` is the 20% darker color. If you saturate the color by 10%, you get `4293764845`, and if you desaturate by 10%, it is `4293777133`.

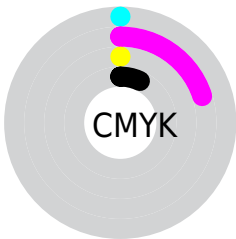
# Distribution



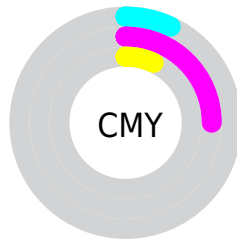
- Red (93%)
- Green (75%)
- Blue (93%)



- Red (93%)
- Yellow (75%)
- Blue (93%)



- Cyan (0%)
- Magenta (20%)
- Yellow (0%)
- Black (7%)



- Cyan (7%)
- Magenta (25%)
- Yellow (7%)

# Brightness & Saturation Gradients

These gradients show how the Android color 4293770989 changes by changing the brightness by 10 percent. The first figure shows a shift by +10% for each color and the second figure -10%.

Similar to the brightness gradients but the following saturation gradients show a change of the Android color 4293770989 by changing the saturation by 10% instead.



 4293770989

 4293770989

4294967295

 4291929041

 4294965247


 4290087093

 4288311194

 4286535296

 4284890727

 4283246415

 4281667896

 4280418339

 4278190089

 4293770989

 4293770989

 4293764845

 4293777133

 4293758957

 4293783021

 4293752813

 4293787629

 4293746669

 4293740525

 4293734637

 4293728493

 4293722349

# Harmonies

## Analogous

The Analogous color harmony consists of three colors that are next to each other on the color wheel.



4291610623



4293770989



4294949330

# Triad

The Triadic color harmony groups three colors that are evenly spaced from another and form a triangle on the color wheel.



4293770989



4293249685



4286176484

# Complementary

The Complementary color scheme is a pair of colors which are on the opposite of each other on the color wheel.



4293770989



4290702782

# Split Complementary

Split-complementary colors differ from the complementary color scheme. The scheme consists of three colors, the original color and two neighbors of the complement color.



4287290568



4293770989



4291351450

# Square

The Square scheme is like the rectangle color scheme, but the four colors are evenly spaced on the color wheel.



4293770989



4294688928



4289255852



4286830842

# Rectangle

The Rectangle color scheme consists of four colors that form a rectangle on the color wheel.



4293770989



4294949311



4289255852



4286373339



# Sweetspot

The Sweet Spot groups the original color and five complimentary colors.



4293770989



4294963455



4290690797



4286609280



4278190080



4286611584



# Same Dimension

The Same Dimension uses a secret algorithm to generate beautiful new colors.



4293770989



4294951679



4293770965



4285885045



4290052277



4281729078



# Inverse Universe

The Inverse Universe completely reimagines the original color for something new.



4293770989



4294951679



4290702805



4285885045



4290052277

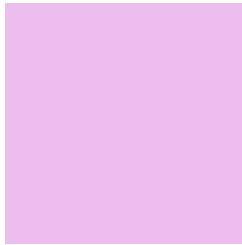


4281729078



# Previews

## White Background



This preview shows how the Android color 4293770989 looks on a white background.

## Color Contrast Check

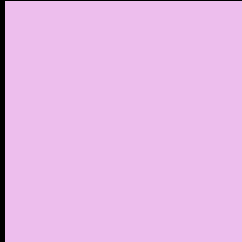
Large Text (above 18pt) WCAG AA × Fail

Any Text WCAG AA × Fail

Large Text (above 18pt) WCAG AAA × Fail

Any Text WCAG AAA × Fail

# Black Background



This preview shows how the Android color 4293770989 looks on a black background.

## Color Contrast Check

Large Text (above 18pt) WCAG AA ✓ Pass

Any Text WCAG AA ✓ Pass

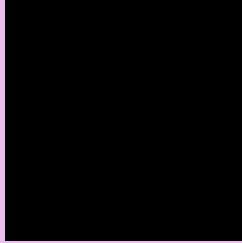
Large Text (above 18pt) WCAG AAA ✓ Pass

Any Text WCAG AAA ✓ Pass

If you want to check with other color combinations, try the [Color Contrast Checker](#).



# Android 4293770989 Background



This preview shows how black text looks on a background with the Android color 4293770989.



This preview shows how white text looks on a background with the Android color 4293770989.

# Color Blindness Simulation

Color vision deficiency is a very complex topic, and I could not describe the different causes any better than Wikipedia does, so if you want to learn more, you should check out their [article about color blindness](#).

## Dichromacy



**Original Color**  
4293770989

**Protanopia**  
4291087350

**Deuteranopia**  
4292069611



**Tritanopia**  
4293510098

# Trichromacy



**Original Color**  
4293770989



**Protanomaly**  
4292069107



**Deuteranomaly**  
4292658412

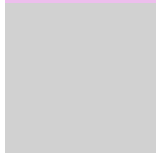


**Tritanomaly**  
4293575132

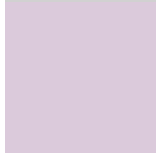
# Monochromacy



**Original Color**  
4293770989



**Achromatopsia**  
4291940817



**Achromatomaly**  
4292594395

# CSS Examples

## Text

The CSS property to change the color of the text to Android 4293770989 is called "color". The color property can be set on classes, ids or directly on the HTML element.

This example shows how text in the color `rgb(237, 190, 237)` looks like.

```
.text, #text, p{  
    color:rgb(237, 190, 237)  
}
```

If you want to add a text shadow in that color use the text-shadow property, you can generate a text shadow directly with our [CSS Text Shadow Generator](#).

Here you see how black text with a 4 pixel rgb(237, 190, 237) colored shadow looks like.

```
.shadow{ text-shadow: 4px 4px 2px rgb(237, 190, 237) }
```

## Border

The CSS property to change the border of an element to Android 4293770989 is called "border". The border property can be set on classes, ids or directly on the HTML element.

This example shows the color as border, it can be applied via the CSS property "border" or "border-color".

```
.border, #border, table{ border:4px solid rgb(237, 190, 237) }
```

If only the border color should be changed use the property `border-color`.

```
.border{ border-color:rgb(237, 190, 237) }
```

If you want to add a box shadow in that color use:

Here you see how a box with a 4 pixel `rgb(237, 190, 237)` colored shadow looks like.

```
.boxshadow{ -moz-box-shadow:4px 4px 4px  
4px rgb(237, 190, 237); -webkit-box-  
shadow:4px 4px 4px 4px rgb(237, 190, 237);  
box-shadow:4px 4px 4px 4px rgb(237, 190,  
237) }
```

# Background

The CSS property to change the background color of an element to Android 4293770989 is called "background". The background property can be set on classes, ids or directly on the HTML element.

```
.background, #background, body{  
background: rgb(237, 190, 237) }
```

If only the background color should be changed can be used:

```
.background{ background-color: rgb(237,  
190, 237) }
```

This example shows the color as background, it is applied via the CSS property "background".

To optimize and compress your CSS code, you can use our [online CSS compressor and optimizer](#) based on csstidy. If you want to create a linear or radial gradient as background or border, check our [CSS Gradient Generator](#).



Hey! You found this booklet interesting? Support Converting Colors with the new Membership Option!

The pro membership hides all ads, plus gives you double the colors in the color bucket, and more awesome pro features!

**[Learn more, Memberships starting at \\$2.50/m!](#)**

**Follow me  
on Twitter!**

@ConvertingColor