

Converting Colors

Android(4293772731)

Have a look what the booklet for
Android(4293772731) contains.

Android(4293772731)	3
<i>Conversions</i>	4
<i>Details</i>	6
<i>Harmonies</i>	11
<i>Previews</i>	23
<i>Color Blindness Simulation</i>	26
<i>CSS Examples</i>	29

Color

Android(4293772731)

Conversions

Conversions Part 1

Format	Color
Hex	EDC5BB
RGB	237, 197, 187
RGB Percent	93%, 77%, 73%
CMY	0.0706, 0.2275, 0.2667
CMYK	0.00, 0.17, 0.21, 0.07
HSL	12°, 58%, 83%
HSV	12°, 21%, 93%
XYZ	63.8609, 61.5249, 55.5234
YIQ	207.8200, 27.0500, 5.3700

Conversions

Conversions Part 2

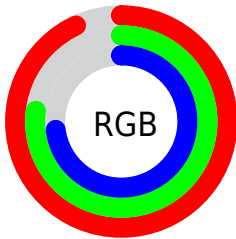
Format	Color
RYB	237, 200, 187
Decimal	15582651
CIELab	82.66, 12.67, 10.32
CIELCh	83, 16.339, 39.164
Yxy	61.5249, 0.3530, 0.3401
Android (android.graphics.Color)	4293772731 (0xFFEDC5BB)
YUV	207.8200, -10.2643, 25.5909
Hunter-Lab	78.4378, 8.0615, 12.9372

Details

The Android color `4293772731` is a light color, and the websafe version is hex `FFCCCC`. A complement of this color would be `4290503661`, and the grayscale version is `4291875024`.

A 20% lighter version of the original color is `4294967027`, and `4290088838` is the 20% darker color. If you saturate the color by 10%, you get `4293767843`, and if you desaturate by 10%, it is `4293777619`.

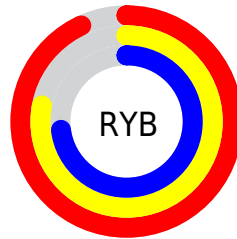
Distribution



Red (93%)

Green (77%)

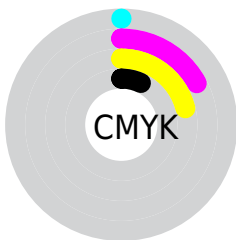
Blue (73%)



Red (93%)

Yellow (78%)

Blue (73%)

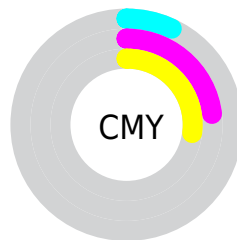


Cyan (0%)

Magenta (17%)

Yellow (21%)

Black (7%)



Cyan (7%)

Magenta (23%)

Yellow (27%)

Brightness & Saturation Gradients

These gradients show how the Android color 4293772731 changes by changing the brightness by 10 percent. The first figure shows a shift by +10% for each color and the second figure -10%.

Similar to the brightness gradients but the following saturation gradients show a change of the Android color 4293772731 by changing the saturation by 10% instead.

 4293772731

 4293772731

4294967295

 4291865248

 4294967027

 4290088838

 4288247405

 4286537044

 4284826941

 4283182887

 4281669907

 4280287232

 4278190080

 4293772731

 4293772731

 4293767843

 4293777619

 4293762956

 4293782506

 4293758068

 4293787391

 4293753180

 4293787647

 4293748292

 4293743405

 4293738517

 4293734144

Harmonies

Analogous

The Analogous color harmony consists of three colors that are next to each other on the color wheel.



4293837769



4293772731



4293183921

Triad

The Triadic color harmony groups three colors that are evenly spaced from another and form a triangle on the color wheel.



4293772731



4289976002



4291022316

Complementary

The Complementary color scheme is a pair of colors which are on the opposite of each other on the color wheel.



4293772731



4290503661

Split Complementary

Split-complementary colors differ from the complementary color scheme. The scheme consists of three colors, the original color and two neighbors of the complement color.



4289843946



4293772731



4289255378

Square

The Square scheme is like the rectangle color scheme, but the four colors are evenly spaced on the color wheel.



4293772731



4291089334



4289189600



4292331750

Rectangle

The Rectangle color scheme consists of four colors that form a rectangle on the color wheel.



4293772731



4292594863



4289189600



4290629612

Sweetspot

The Sweet Spot groups the original color and five complimentary colors.



4293772731



4294964208



4293770211



4286609527



4278190080



4286611584

Same Dimension

The Same Dimension uses a secret algorithm to generate beautiful new colors.



4293772731



4294954175



4293779131



4285885546



4290061312



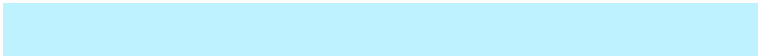
4281731840

Inverse Universe

The Inverse Universe completely reimagines the original color for something new.



4290503661



4290769663



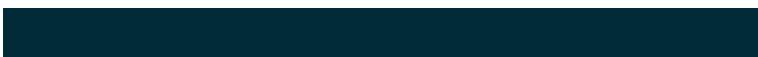
4290497261



4285166453



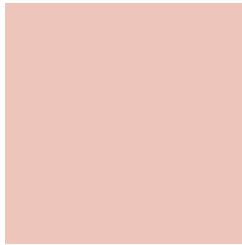
4278227381



4278201142

Previews

White Background



This preview shows how the Android color 4293772731 looks on a white background.

Color Contrast Check

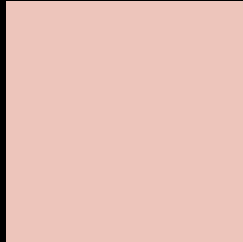
Large Text (above 18pt) WCAG AA × Fail

Any Text WCAG AA × Fail

Large Text (above 18pt) WCAG AAA × Fail

Any Text WCAG AAA × Fail

Black Background



This preview shows how the Android color 4293772731 looks on a black background.

Color Contrast Check

Large Text (above 18pt) WCAG AA ✓ Pass

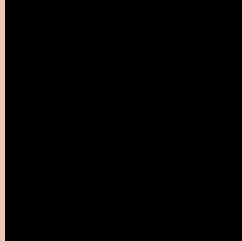
Any Text WCAG AA ✓ Pass

Large Text (above 18pt) WCAG AAA ✓ Pass

Any Text WCAG AAA ✓ Pass

If you want to check with other color combinations, try the [Color Contrast Checker](#).

Android 4293772731 Background



This preview shows how black text looks on a background with the Android color 4293772731.



This preview shows how white text looks on a background with the Android color 4293772731.

Color Blindness Simulation

Color vision deficiency is a very complex topic, and I could not describe the different causes any better than Wikipedia does, so if you want to learn more, you should check out their [article about color blindness](#).


Dichromacy



Original Color
4293772731

Protanopia
4292201919

Deuteranopia
4293511099



Tritanopia
4293968593

Trichromacy



Original Color
4293772731

Protanomaly
4292790974

Deuteranomaly
4293576379

Tritanomaly
4293903305

Monochromacy



Original Color
4293772731

Achromatopsia
4291875024

Achromatomaly
4292594888

CSS Examples

Text

The CSS property to change the color of the text to Android 4293772731 is called "color". The color property can be set on classes, ids or directly on the HTML element.

This example shows how text in the color `rgb(237, 197, 187)` looks like.

```
.text, #text, p{  
    color:rgb(237, 197, 187)  
}
```

If you want to add a text shadow in that color use the text-shadow property, you can generate a text shadow directly with our [CSS Text Shadow Generator](#).

Here you see how black text with a 4 pixel rgb(237, 197, 187) colored shadow looks like.

```
.shadow{ text-shadow: 4px 4px 2px rgb(237, 197, 187) }
```

Border

The CSS property to change the border of an element to Android 4293772731 is called "border". The border property can be set on classes, ids or directly on the HTML element.

This example shows the color as border, it can be applied via the CSS property "border" or "border-color".

```
.border, #border, table{ border:4px solid rgb(237, 197, 187) }
```

If only the border color should be changed use the property `border-color`.

```
.border{ border-color:rgb(237, 197, 187) }
```

If you want to add a box shadow in that color use:

Here you see how a box with a 4 pixel `rgb(237, 197, 187)` colored shadow looks like.

```
.boxshadow{ -moz-box-shadow:4px 4px 4px  
4px rgb(237, 197, 187); -webkit-box-  
shadow:4px 4px 4px 4px rgb(237, 197, 187);  
box-shadow:4px 4px 4px 4px rgb(237, 197,  
187) }
```

Background

The CSS property to change the background color of an element to Android 4293772731 is called "background". The background property can be set on classes, ids or directly on the HTML element.

```
.background, #background, body{  
background: rgb(237, 197, 187) }
```

If only the background color should be changed can be used:

```
.background{ background-color: rgb(237,  
197, 187) }
```

This example shows the color as background, it is applied via the CSS property "background".

To optimize and compress your CSS code, you can use our [online CSS compressor and optimizer](#) based on csstidy. If you want to create a linear or radial gradient as background or border, check our [CSS Gradient Generator](#).

Hey! You found this booklet interesting? Support Converting Colors with the new Membership Option!

The pro membership hides all ads, plus gives you double the colors in the color bucket, and more awesome pro features!

[Learn more, Memberships starting at \\$2.50/m!](#)

**Follow me
on Twitter!**

@ConvertingColor