

Converting Colors

Android(4293775824)

Have a look what the booklet for
Android(4293775824) contains.

Android(4293775824)	3
<i>Conversions</i>	4
<i>Details</i>	6
<i>Harmonies</i>	11
<i>Previews</i>	23
<i>Color Blindness Simulation</i>	26
<i>CSS Examples</i>	29

Color

Android(4293775824)

Conversions

Conversions Part 1

Format	Color
Hex	EDD1D0
RGB	237, 209, 208
RGB Percent	93%, 82%, 82%
CMY	0.0706, 0.1804, 0.1843
CMYK	0.00, 0.12, 0.12, 0.07
HSL	2°, 45%, 87%
HSV	2°, 12%, 93%
XYZ	69.1107, 68.1595, 69.1881
YIQ	217.2580, 17.0090, 5.6250

Conversions

Conversions Part 2

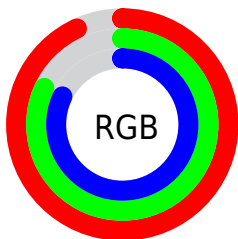
Format	Color
R _Y B	237, 209, 208
Decimal	15585744
CIE Lab	86.09, 9.59, 4.07
CIE LCh	86, 10.413, 22.986
Yxy	68.1595, 0.3347, 0.3301
Android (android.graphics.Color)	4293775824 (0xFFEDD1D0)
YUV	217.2580, -4.5642, 17.3137
Hunter-Lab	82.5588, 4.9461, 8.1034

Details

The Android color `4293775824` is a light color, and the websafe version is hex `FFCCCC`. A complement of this color would be `4291882221`, and the grayscale version is `4292467161`.

A 20% lighter version of the original color is `4294967295`, and `4290091930` is the 20% darker color. If you saturate the color by 10%, you get `4293769912`, and if you desaturate by 10%, it is `4293781736`.

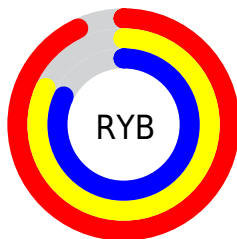
Distribution



Red (93%)

Green (82%)

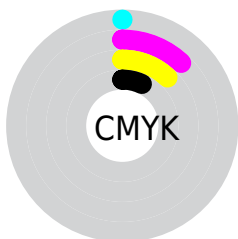
Blue (82%)



Red (93%)

Yellow (82%)

Blue (82%)

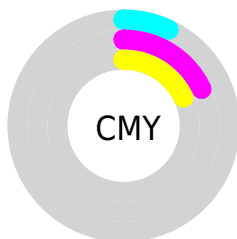


Cyan (0%)

Magenta (12%)

Yellow (12%)

Black (7%)



Cyan (7%)

Magenta (18%)

Yellow (18%)

Brightness & Saturation Gradients

These gradients show how the Android color 4293775824 changes by changing the brightness by 10 percent. The first figure shows a shift by +10% for each color and the second figure -10%.

Similar to the brightness gradients but the following saturation gradients show a change of the Android color 4293775824 by changing the saturation by 10% instead.

 4293775824

 4293775824

4294967295

 4291933620

 4290091930

 4288315776

 4286605159

 4284895055

 4283316280

 4281803555

 4280421901

 4278190080

 4293775824

 4293775824

 4293769912

 4293781736

 4293764001

 4293787647

 4293758089

 4293752177

 4293746521

 4293740610

 4293734698

 4293728786

 4293724160

Harmonies

Analogous

The Analogous color harmony consists of three colors that are next to each other on the color wheel.



4293579226



4293775824



4293579720

Triad

The Triadic color harmony groups three colors that are evenly spaced from another and form a triangle on the color wheel.



4293775824



4291615947



4291549675

Complementary

The Complementary color scheme is a pair of colors which are on the opposite of each other on the color wheel.



4293775824



4291882221

Split Complementary

Split-complementary colors differ from the complementary color scheme. The scheme consists of three colors, the original color and two neighbors of the complement color.



4290960615



4293775824



4291026389

Square

The Square scheme is like the rectangle color scheme, but the four colors are evenly spaced on the color wheel.



4293775824



4292336069



4290764255



4292335337

Rectangle

The Rectangle color scheme consists of four colors that form a rectangle on the color wheel.



4293775824



4293252549



4290764255



4291287786

Sweetspot

The Sweet Spot groups the original color and five complimentary colors.



4293775824



4294964725



4293775596



4286609785



4278190080



4286611584

Same Dimension

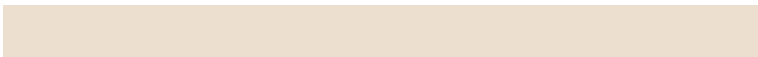
The Same Dimension uses a secret algorithm to generate beautiful new colors.



4293775824



4294957785



4293779408



4285885034



4290053632



4281729536

Inverse Universe

The Inverse Universe completely reimagines the original color for something new.



4291882221



4292476671



4291878637



4285166965



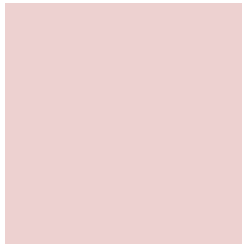
4278235061



4278203446

Previews

White Background



This preview shows how the Android color 4293775824 looks on a white background.

Color Contrast Check

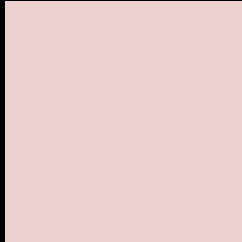
Large Text (above 18pt) WCAG AA × Fail

Any Text WCAG AA × Fail

Large Text (above 18pt) WCAG AAA × Fail

Any Text WCAG AAA × Fail

Black Background



This preview shows how the Android color 4293775824 looks on a black background.

Color Contrast Check

Large Text (above 18pt) WCAG AA ✓ Pass

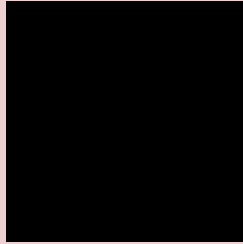
Any Text WCAG AA ✓ Pass

Large Text (above 18pt) WCAG AAA ✓ Pass

Any Text WCAG AAA ✓ Pass

If you want to check with other color combinations, try the [Color Contrast Checker](#).

Android 4293775824 Background



This preview shows how black text looks on a background with the Android color 4293775824.



This preview shows how white text looks on a background with the Android color 4293775824.

Color Blindness Simulation

Color vision deficiency is a very complex topic, and I could not describe the different causes any better than Wikipedia does, so if you want to learn more, you should check out their [article about color blindness](#).


Dichromacy



Original Color
4293775824

Protanopia
4292662995

Deuteranopia
4293906640



Tritanopia
4293906399

Trichromacy



Original Color

4293775824

Protanomaly

4293055698

Deuteranomaly

4293841104

Tritanomaly

4293841114

Monochromacy



Original Color

4293775824

Achromatopsia

4292467161

Achromatomaly

4292925142

CSS Examples

Text

The CSS property to change the color of the text to Android 4293775824 is called "color". The color property can be set on classes, ids or directly on the HTML element.

This example shows how text in the color `rgb(237, 209, 208)` looks like.

```
.text, #text, p{  
    color:rgb(237, 209, 208)  
}
```

If you want to add a text shadow in that color use the text-shadow property, you can generate a text shadow directly with our [CSS Text Shadow Generator](#).

Here you see how black text with a 4 pixel rgb(237, 209, 208) colored shadow looks like.

```
.shadow{ text-shadow: 4px 4px 2px rgb(237, 209, 208) }
```

Border

The CSS property to change the border of an element to Android 4293775824 is called "border". The border property can be set on classes, ids or directly on the HTML element.

This example shows the color as border, it can be applied via the CSS property "border" or "border-color".

```
.border, #border, table{ border:4px solid rgb(237, 209, 208) }
```

If only the border color should be changed use the property `border-color`.

```
.border{ border-color:rgb(237, 209, 208) }
```

If you want to add a box shadow in that color use:

Here you see how a box with a 4 pixel `rgb(237, 209, 208)` colored shadow looks like.

```
.boxshadow{ -moz-box-shadow:4px 4px 4px 4px rgb(237, 209, 208); -webkit-box-shadow:4px 4px 4px 4px rgb(237, 209, 208); box-shadow:4px 4px 4px 4px rgb(237, 209, 208) }
```

Background

The CSS property to change the background color of an element to Android 4293775824 is called "background". The background property can be set on classes, ids or directly on the HTML element.

```
.background, #background, body{  
background: rgb(237, 209, 208) }
```

If only the background color should be changed can be used:

```
.background{ background-color: rgb(237,  
209, 208) }
```

This example shows the color as background, it is applied via the CSS property "background".

To optimize and compress your CSS code, you can use our [online CSS compressor and optimizer](#) based on csstidy. If you want to create a linear or radial gradient as background or border, check our [CSS Gradient Generator](#).

Hey! You found this booklet interesting? Support Converting Colors with the new Membership Option!

The pro membership hides all ads, plus gives you double the colors in the color bucket, and more awesome pro features!

[Learn more, Memberships starting at \\$2.50/m!](#)

**Follow me
on Twitter!**

@ConvertingColor