

Converting Colors

Android(4293778918)

Have a look what the booklet for
Android(4293778918) contains.

Android(4293778918)	3
<i>Conversions</i>	4
<i>Details</i>	6
<i>Harmonies</i>	11
<i>Previews</i>	23
<i>Color Blindness Simulation</i>	26
<i>CSS Examples</i>	29

Color

Android(4293778918)

Conversions

Conversions Part 1

Format	Color
Hex	EDDDE6
RGB	237, 221, 230
RGB Percent	93%, 87%, 90%
CMY	0.0706, 0.1333, 0.0980
CMYK	0.00, 0.07, 0.03, 0.07
HSL	326°, 31%, 90%
HSV	326°, 7%, 93%
XYZ	75.0644, 75.4306, 85.4662
YIQ	226.8100, 6.6470, 6.1910

Conversions

Conversions Part 2

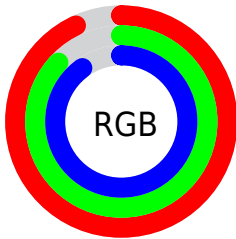
Format	Color
R _Y B	237, 221, 230
Decimal	15588838
CIE Lab	89.59, 7.02, -2.43
CIE LCh	90, 7.431, 340.900
Yxy	75.4306, 0.3181, 0.3197
Android (android.graphics.Color)	4293778918 (0xFFEDDDE6)
YUV	226.8100, 1.5727, 8.9366
Hunter-Lab	86.8508, 2.2872, 2.4508

Details

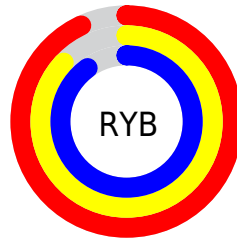
The Android color `4293778918` is a light color, and the websafe version is hex `CCCCCC`. A complement of this color would be `4292734436`, and the grayscale version is `4293125091`.

A 20% lighter version of the original color is `4294967295`, and `4290094767` is the 20% darker color. If you saturate the color by 10%, you get `4293772764`, and if you desaturate by 10%, it is `4293785072`.

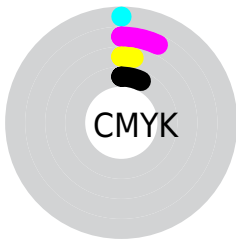
Distribution



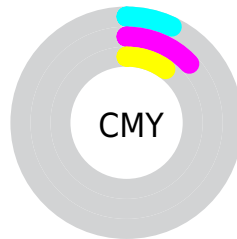
- Red (93%)
- Green (87%)
- Blue (90%)



- Red (93%)
- Yellow (87%)
- Blue (90%)



- Cyan (0%)
- Magenta (7%)
- Yellow (3%)
- Black (7%)



- Cyan (7%)
- Magenta (13%)
- Yellow (10%)

Brightness & Saturation Gradients

These gradients show how the Android color 4293778918 changes by changing the brightness by 10 percent. The first figure shows a shift by +10% for each color and the second figure -10%.

Similar to the brightness gradients but the following saturation gradients show a change of the Android color 4293778918 by changing the saturation by 10% instead.

 4293778918

 4293778918

4294967295

 4291936714


 4290094767

 4288318612

 4286607994

 4284963425

 4283384394

 4281871411

 4280489758

 4278976516

 4293778918

 4293778918

 4293772764

 4293785072

 4293766865

 4293787643

 4293760711

 4293787647

 4293754557

 4293748402

 4293742504

 4293736349

 4293730195

 4293724297

Harmonies

Analogous

The Analogous color harmony consists of three colors that are next to each other on the color wheel.



4293320684



4293778918



4294041055

Triad

The Triadic color harmony groups three colors that are evenly spaced from another and form a triangle on the color wheel.



4293778918



4293255891



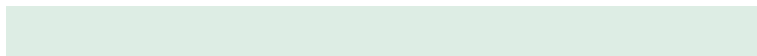
4291945962

Complementary

The Complementary color scheme is a pair of colors which are on the opposite of each other on the color wheel.



4293778918



4292734436

Split Complementary

Split-complementary colors differ from the complementary color scheme. The scheme consists of three colors, the original color and two neighbors of the complement color.



4291946212



4293778918



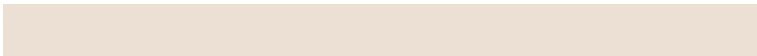
4292666582

Square

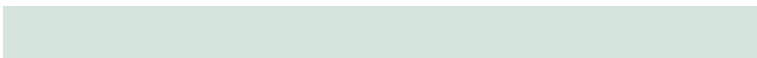
The Square scheme is like the rectangle color scheme, but the four colors are evenly spaced on the color wheel.



4293778918



4293713876



4292208092



4292207598

Rectangle

The Rectangle color scheme consists of four colors that form a rectangle on the color wheel.



4293778918



4294041050



4292208092



4291880424

Sweetspot

The Sweet Spot groups the original color and five complimentary colors.



4293778918



4294966013



4293189101



4286610814



4278190080



4286611584

Same Dimension

The Same Dimension uses a secret algorithm to generate beautiful new colors.



4293778918



4294962166



4293778910



4285885040



4290052198



4281729054

Inverse Universe

The Inverse Universe completely reimagines the original color for something new.



4293778918



4294962166



4292734444



4285885040



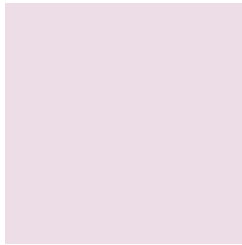
4290052198



4281729054

Previews

White Background



This preview shows how the Android color 4293778918 looks on a white background.

Color Contrast Check

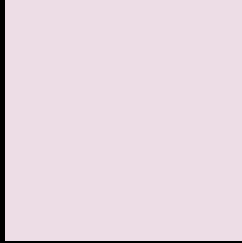
Large Text (above 18pt) WCAG AA × Fail

Any Text WCAG AA × Fail

Large Text (above 18pt) WCAG AAA × Fail

Any Text WCAG AAA × Fail

Black Background



This preview shows how the Android color 4293778918 looks on a black background.

Color Contrast Check

Large Text (above 18pt) WCAG AA ✓ Pass

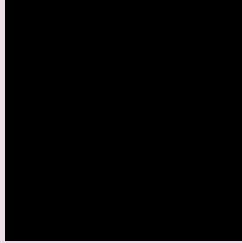
Any Text WCAG AA ✓ Pass

Large Text (above 18pt) WCAG AAA ✓ Pass

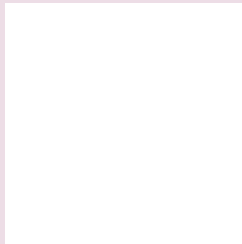
Any Text WCAG AAA ✓ Pass

If you want to check with other color combinations, try the [Color Contrast Checker](#).

Android 4293778918 Background



This preview shows how black text looks on a background with the Android color 4293778918.



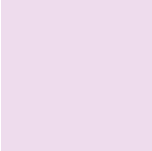
This preview shows how white text looks on a background with the Android color 4293778918.

Color Blindness Simulation

Color vision deficiency is a very complex topic, and I could not describe the different causes any better than Wikipedia does, so if you want to learn more, you should check out their [article about color blindness](#).

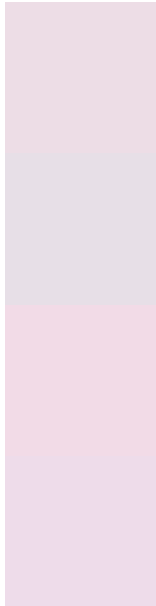
Dichromacy





Tritanopia
4293844205

Trichromacy



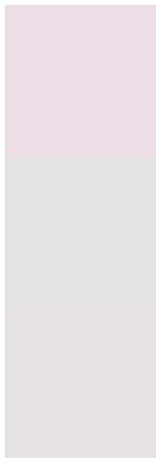
Original Color
4293778918

Protanomaly
4293386215

Deuteranomaly
4294106087

Tritanomaly
4293844202

Monochromacy



Original Color
4293778918

Achromatopsia
4293125091

Achromatomaly
4293386724

CSS Examples

Text

The CSS property to change the color of the text to Android 4293778918 is called "color". The color property can be set on classes, ids or directly on the HTML element.

This example shows how text in the color `rgb(237, 221, 230)` looks like.

```
.text, #text, p{  
    color:rgb(237, 221, 230)  
}
```

If you want to add a text shadow in that color use the text-shadow property, you can generate a text shadow directly with our [CSS Text Shadow Generator](#).

Here you see how black text with a 4 pixel rgb(237, 221, 230) colored shadow looks like.

```
.shadow{ text-shadow: 4px 4px 2px rgb(237, 221, 230) }
```

Border

The CSS property to change the border of an element to Android 4293778918 is called "border". The border property can be set on classes, ids or directly on the HTML element.

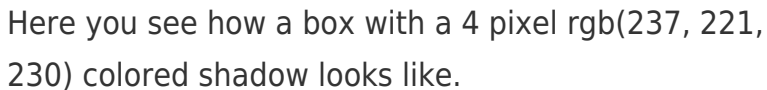
This example shows the color as border, it can be applied via the CSS property "border" or "border-color".

```
.border, #border, table{ border:4px solid rgb(237, 221, 230) }
```

If only the border color should be changed use the property `border-color`.

```
.border{ border-color:rgb(237, 221, 230) }
```

If you want to add a box shadow in that color use:



Here you see how a box with a 4 pixel `rgb(237, 221, 230)` colored shadow looks like.

```
.boxshadow{ -moz-box-shadow:4px 4px 4px 4px rgb(237, 221, 230); -webkit-box-shadow:4px 4px 4px 4px rgb(237, 221, 230); box-shadow:4px 4px 4px 4px rgb(237, 221, 230) }
```

Background

The CSS property to change the background color of an element to Android 4293778918 is called "background". The background property can be set on classes, ids or directly on the HTML element.

```
.background, #background, body{  
background: rgb(237, 221, 230) }
```

If only the background color should be changed can be used:

```
.background{ background-color: rgb(237,  
221, 230) }
```

This example shows the color as background, it is applied via the CSS property "background".

To optimize and compress your CSS code, you can use our [online CSS compressor and optimizer](#) based on csstidy. If you want to create a linear or radial gradient as background or border, check our [CSS Gradient Generator](#).

Hey! You found this booklet interesting? Support Converting Colors with the new Membership Option!

The pro membership hides all ads, plus gives you double the colors in the color bucket, and more awesome pro features!

[Learn more, Memberships starting at \\$2.50/m!](#)

**Follow me
on Twitter!**

@ConvertingColor