

# Converting Colors

Android(4293819545)

Have a look what the booklet for  
Android(4293819545) contains.

<b>Android(4293819545)</b> .....	3
<i><b>Conversions</b></i> .....	4
<i><b>Details</b></i> .....	6
<i><b>Harmonies</b></i> .....	11
<i><b>Previews</b></i> .....	23
<i><b>Color Blindness Simulation</b></i> .....	26
<i><b>CSS Examples</b></i> .....	29

# **Color**

**Android(4293819545)**

# Conversions

## Conversions Part 1

Format	Color
Hex	EE7C99
RGB	238, 124, 153
RGB Percent	93%, 49%, 60%
CMY	0.0667, 0.5137, 0.4000
CMYK	0.00, 0.48, 0.36, 0.07
HSL	345°, 77%, 71%
HSV	345°, 48%, 93%
XYZ	48.2173, 34.8924, 34.3306
YIQ	161.3920, 58.6350, 33.1870

# Conversions

## Conversions Part 2

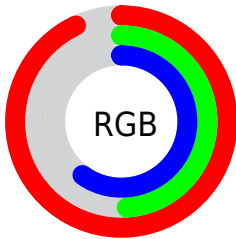
Format	Color
R <sub>Y</sub> B	238, 124, 153
Decimal	15629465
CIE Lab	65.66, 46.77, 4.68
CIE LCh	66, 47.002, 5.710
Yxy	34.8924, 0.4106, 0.2971
Android (android.graphics.Color)	4293819545 (0xFFEE7C99)
YUV	161.3920, -4.1373, 67.1852
Hunter-Lab	59.0698, 42.3335, 6.8903

# Details

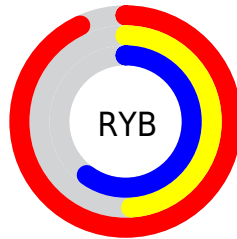
The Android color **4293819545** is a light color, and the websafe version is hex **FF6699**. A complement of this color would be **4286377681**, and the grayscale version is **4288782753**.

A 20% lighter version of the original color is **4294947791**, and **4289939302** is the 20% darker color. If you saturate the color by 10%, you get **4293813383**, and if you desaturate by 10%, it is **4293825707**.

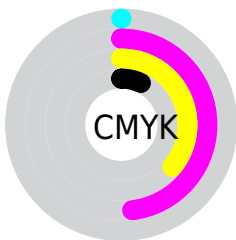
# Distribution



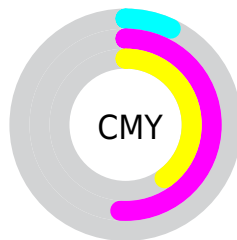
- Red (93%)
- Green (49%)
- Blue (60%)



- Red (93%)
- Yellow (49%)
- Blue (60%)



- Cyan (0%)
- Magenta (48%)
- Yellow (36%)
- Black (7%)



- Cyan (7%)
- Magenta (51%)
- Yellow (40%)

# Brightness & Saturation Gradients

These gradients show how the Android color 4293819545 changes by changing the brightness by 10 percent. The first figure shows a shift by +10% for each color and the second figure -10%.

Similar to the brightness gradients but the following saturation gradients show a change of the Android color 4293819545 by changing the saturation by 10% instead.





4293819545



4293819545

4294967295



4291846527



4294947791



4289939302



4294954987



4288031822



4294962431



4286188088



4284350498



4282581004



4280877057



4278190080



4293819545



4293819545

 4293813383

 4293825707

 4293807222

 4293831868

 4293801316

 4293837774

 4293795154

 4293843936

 4293788992

 4293850098

 4293787709

 4293853183

# Harmonies

## Analogous

The Analogous color harmony consists of three colors that are next to each other on the color wheel.



4292510403



4293819545



4293624689

# Triad

The Triadic color harmony groups three colors that are evenly spaced from another and form a triangle on the color wheel.



4293819545



4286950233



4278234604

# Complementary

The Complementary color scheme is a pair of colors which are on the opposite of each other on the color wheel.



4293819545



4286377681

# Split Complementary

Split-complementary colors differ from the complementary color scheme. The scheme consists of three colors, the original color and two neighbors of the complement color.



4278236367



4293819545



4283150971

# Square

The Square scheme is like the rectangle color scheme, but the four colors are evenly spaced on the color wheel.



4293819545



4289830985



4278236582



4284916211

# Rectangle

The Rectangle color scheme consists of four colors that form a rectangle on the color wheel.



4293819545



4292775003



4278236582



4278235364



# Sweetspot

The Sweet Spot groups the original color and five complimentary colors.



4293819545



4294958052



4291853550



4286605935



4278190080



4286611584



# Same Dimension

The Same Dimension uses a secret algorithm to generate beautiful new colors.



4293819545



4294930067



4293826428



4286082159



4290248751



4281860110



# Inverse Universe

The Inverse Universe completely reimagines the original color for something new.



4293819545



4294930067



4286370798



4286082159



4290248751



4281860110



# Previews

## White Background



This preview shows how the Android color 4293819545 looks on a white background.

## Color Contrast Check

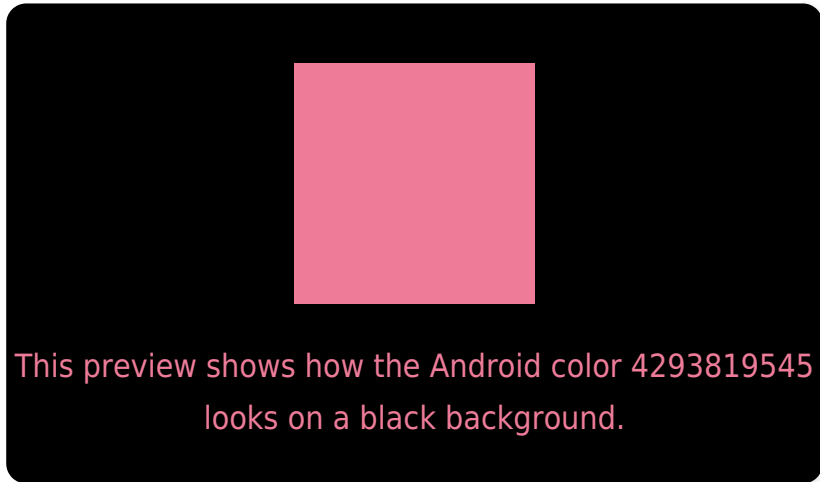
Large Text (above 18pt) WCAG AA × Fail

Any Text WCAG AA × Fail

Large Text (above 18pt) WCAG AAA × Fail

Any Text WCAG AAA × Fail

# Black Background



## Color Contrast Check

Large Text (above 18pt) WCAG AA ✓ Pass

Any Text WCAG AA ✓ Pass

Large Text (above 18pt) WCAG AAA ✓ Pass

Any Text WCAG AAA ✓ Pass

If you want to check with other color combinations, try the [Color Contrast Checker](#).



# Android 4293819545 Background



This preview shows how black text looks on a background with the Android color 4293819545.



This preview shows how white text looks on a background with the Android color 4293819545.

# Color Blindness Simulation

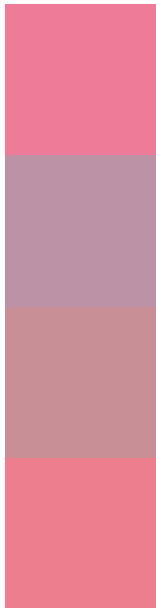
Color vision deficiency is a very complex topic, and I could not describe the different causes any better than Wikipedia does, so if you want to learn more, you should check out their [article about color blindness](#).

## Dichromacy





# Trichromacy



**Original Color**  
4293819545

**Protanomaly**  
4290548390

**Deuteranomaly**  
4291399574

**Tritanomaly**  
4293754510

# Monochromacy



**Original Color**  
4293819545

**Achromatopsia**  
4288782753

**Achromatomaly**  
4290614430

# CSS Examples

## Text

The CSS property to change the color of the text to Android 4293819545 is called "color". The color property can be set on classes, ids or directly on the HTML element.

This example shows how text in the color `rgb(238, 124, 153)` looks like.

```
.text, #text, p{  
    color:rgb(238, 124, 153)  
}
```

If you want to add a text shadow in that color use the text-shadow property, you can generate a text shadow directly with our [CSS Text Shadow Generator](#).

Here you see how black text with a 4 pixel rgb(238, 124, 153) colored shadow looks like.

```
.shadow{ text-shadow: 4px 4px 2px rgb(238, 124, 153) }
```

## Border

The CSS property to change the border of an element to Android 4293819545 is called "border". The border property can be set on classes, ids or directly on the HTML element.

This example shows the color as border, it can be applied via the CSS property "border" or "border-color".

```
.border, #border, table{ border:4px solid rgb(238, 124, 153) }
```

If only the border color should be changed use the property `border-color`.

```
.border{ border-color:rgb(238, 124, 153) }
```

If you want to add a box shadow in that color use:

Here you see how a box with a 4 pixel `rgb(238, 124, 153)` colored shadow looks like.

```
.boxshadow{ -moz-box-shadow:4px 4px 4px  
4px rgb(238, 124, 153); -webkit-box-  
shadow:4px 4px 4px 4px rgb(238, 124, 153);  
box-shadow:4px 4px 4px 4px rgb(238, 124,  
153) }
```

# Background

The CSS property to change the background color of an element to Android 4293819545 is called "background". The background property can be set on classes, ids or directly on the HTML element.

```
.background, #background, body{  
background: rgb(238, 124, 153) }
```

If only the background color should be changed can be used:

```
.background{ background-color: rgb(238,  
124, 153) }
```

This example shows the color as background, it is applied via the CSS property "background".

To optimize and compress your CSS code, you can use our [online CSS compressor and optimizer](#) based on csstidy. If you want to create a linear or radial gradient as background or border, check our [CSS Gradient Generator](#).



Hey! You found this booklet interesting? Support Converting Colors with the new Membership Option!

The pro membership hides all ads, plus gives you double the colors in the color bucket, and more awesome pro features!

**[Learn more, Memberships starting at \\$2.50/m!](#)**

**Follow me  
on Twitter!**

@ConvertingColor