

Converting Colors

Android(4293823657)

Have a look what the booklet for
Android(4293823657) contains.

Android(4293823657)	3
<i>Conversions</i>	4
<i>Details</i>	6
<i>Harmonies</i>	11
<i>Previews</i>	23
<i>Color Blindness Simulation</i>	26
<i>CSS Examples</i>	29

Color

Android(4293823657)

Conversions

Conversions Part 1

Format	Color
Hex	EE8CA9
RGB	238, 140, 169
RGB Percent	93%, 55%, 66%
CMY	0.0667, 0.4510, 0.3373
CMYK	0.00, 0.41, 0.29, 0.07
HSL	342°, 74%, 74%
HSV	342°, 41%, 93%
XYZ	51.7994, 39.7979, 42.4877
YIQ	172.6080, 49.0990, 29.7950

Conversions

Conversions Part 2

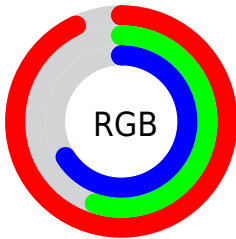
Format	Color
R _Y B	238, 140, 169
Decimal	15633577
CIE Lab	69.33, 40.63, 0.96
CIE LCh	69, 40.642, 1.358
Yxy	39.7979, 0.3863, 0.2968
Android (android.graphics.Color)	4293823657 (0xFFEE8CA9)
YUV	172.6080, -1.7787, 57.3488
Hunter-Lab	63.0856, 36.1662, 4.2284

Details

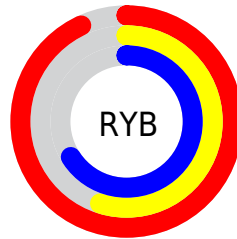
The Android color `4293823657` is a light color, and the websafe version is hex `FF99CC`. A complement of this color would be `4287426257`, and the grayscale version is `4289572269`.

A 20% lighter version of the original color is `4294951904`, and `4290008949` is the 20% darker color. If you saturate the color by 10%, you get `4293817496`, and if you desaturate by 10%, it is `4293829818`.

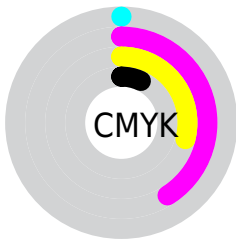
Distribution



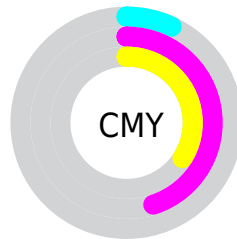
- Red (93%)
- Green (55%)
- Blue (66%)



- Red (93%)
- Yellow (55%)
- Blue (66%)



- Cyan (0%)
- Magenta (41%)
- Yellow (29%)
- Black (7%)



- Cyan (7%)
- Magenta (45%)
- Yellow (34%)

Brightness & Saturation Gradients

These gradients show how the Android color 4293823657 changes by changing the brightness by 10 percent. The first figure shows a shift by +10% for each color and the second figure -10%.

Similar to the brightness gradients but the following saturation gradients show a change of the Android color 4293823657 by changing the saturation by 10% instead.

 4293823657

 4293823657

4294967295

 4291916175

 4294951904

 4290008949

 4294959101

 4288167516

 4294966783

 4286325829

 4284548143

 4282777626

 4281335810

 4278190080

 4293823657

 4293823657

 4293817496

 4293829818

 4293811335

 4293835979

 4293805431

 4293841883

 4293799270

 4293848044

 4293793109

 4293853181

 4293787718

 4293853183

Harmonies

Analogous

The Analogous color harmony consists of three colors that are next to each other on the color wheel.



4292448973



4293823657



4293890181

Triad

The Triadic color harmony groups three colors that are evenly spaced from another and form a triangle on the color wheel.



4293823657



4288262761



4280399593

Complementary

The Complementary color scheme is a pair of colors which are on the opposite of each other on the color wheel.



4293823657



4287426257

Split Complementary

Split-complementary colors differ from the complementary color scheme. The scheme consists of three colors, the original color and two neighbors of the complement color.



4278238414



4293823657



4285315717

Square

The Square scheme is like the rectangle color scheme, but the four colors are evenly spaced on the color wheel.



4293823657



4290750559



4281449898



4285836530

Rectangle

The Rectangle color scheme consists of four colors that form a rectangle on the color wheel.



4293823657



4293236593



4281449898



4278237666

Sweetspot

The Sweet Spot groups the original color and five complimentary colors.



4293823657



4294959337



4291923182



4286606963



4278190080



4286611584

Same Dimension

The Same Dimension uses a secret algorithm to generate beautiful new colors.



4293823657



4294935207



4293828748



4286082159



4290248758



4281860113

Inverse Universe

The Inverse Universe completely reimagines the original color for something new.



4293823657



4294935207



4287421166



4286082159



4290248758



4281860113

Previews

White Background



This preview shows how the Android color 4293823657 looks on a white background.

Color Contrast Check

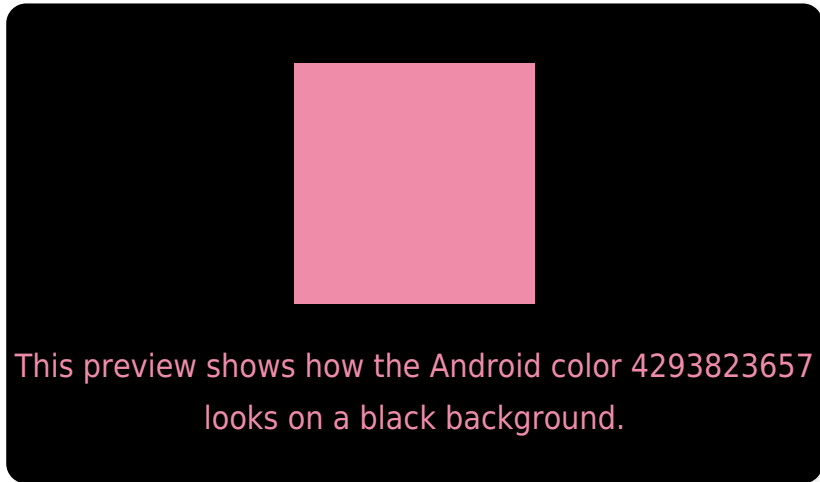
Large Text (above 18pt) WCAG AA × Fail

Any Text WCAG AA × Fail

Large Text (above 18pt) WCAG AAA × Fail

Any Text WCAG AAA × Fail

Black Background



Color Contrast Check

Large Text (above 18pt) WCAG AA ✓ Pass

Any Text WCAG AA ✓ Pass

Large Text (above 18pt) WCAG AAA ✓ Pass

Any Text WCAG AAA ✓ Pass

If you want to check with other color combinations, try the [Color Contrast Checker](#).

Android 4293823657 Background



This preview shows how black text looks on a background with the Android color 4293823657.



This preview shows how white text looks on a background with the Android color 4293823657.

Color Blindness Simulation

Color vision deficiency is a very complex topic, and I could not describe the different causes any better than Wikipedia does, so if you want to learn more, you should check out their [article about color blindness](#).


Dichromacy



Original Color
4293823657

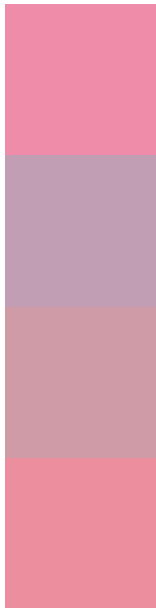
Protanopia
4289243578

Deuteranopia
4290552997



Tritanopia
4293693337

Trichromacy



Original Color
4293823657

Protanomaly
4290879156

Deuteranomaly
4291730342

Tritanomaly
4293758623

Monochromacy



Original Color
4293823657

Achromatopsia
4289572269

Achromatomaly
4291142060

CSS Examples

Text

The CSS property to change the color of the text to Android 4293823657 is called "color". The color property can be set on classes, ids or directly on the HTML element.

This example shows how text in the color `rgb(238, 140, 169)` looks like.

```
.text, #text, p{  
    color:rgb(238, 140, 169)  
}
```

If you want to add a text shadow in that color use the text-shadow property, you can generate a text shadow directly with our [CSS Text Shadow Generator](#).

Here you see how black text with a 4 pixel rgb(238, 140, 169) colored shadow looks like.

```
.shadow{ text-shadow: 4px 4px 2px rgb(238, 140, 169) }
```

Border

The CSS property to change the border of an element to Android 4293823657 is called "border". The border property can be set on classes, ids or directly on the HTML element.

This example shows the color as border, it can be applied via the CSS property "border" or "border-color".

```
.border, #border, table{ border:4px solid rgb(238, 140, 169) }
```

If only the border color should be changed use the property `border-color`.

```
.border{ border-color:rgb(238, 140, 169) }
```

If you want to add a box shadow in that color use:

Here you see how a box with a 4 pixel `rgb(238, 140, 169)` colored shadow looks like.

```
.boxshadow{ -moz-box-shadow:4px 4px 4px  
4px rgb(238, 140, 169); -webkit-box-  
shadow:4px 4px 4px 4px rgb(238, 140, 169);  
box-shadow:4px 4px 4px 4px rgb(238, 140,  
169) }
```

Background

The CSS property to change the background color of an element to Android 4293823657 is called "background". The background property can be set on classes, ids or directly on the HTML element.

```
.background, #background, body{  
background: rgb(238, 140, 169) }
```

If only the background color should be changed can be used:

```
.background{ background-color: rgb(238,  
140, 169) }
```

This example shows the color as background, it is applied via the CSS property "background".

To optimize and compress your CSS code, you can use our [online CSS compressor and optimizer](#) based on csstidy. If you want to create a linear or radial gradient as background or border, check our [CSS Gradient Generator](#).

Hey! You found this booklet interesting? Support Converting Colors with the new Membership Option!

The pro membership hides all ads, plus gives you double the colors in the color bucket, and more awesome pro features!

[Learn more, Memberships starting at \\$2.50/m!](#)

**Follow me
on Twitter!**

@ConvertingColor