

Converting Colors

Android(4293836268)

Have a look what the booklet for
Android(4293836268) contains.

Android(4293836268)	3
<i>Conversions</i>	4
<i>Details</i>	6
<i>Harmonies</i>	11
<i>Previews</i>	23
<i>Color Blindness Simulation</i>	26
<i>CSS Examples</i>	29

Color

Android(4293836268)

Conversions

Conversions Part 1

Format	Color
Hex	EEBDEC
RGB	238, 189, 236
RGB Percent	93%, 74%, 93%
CMY	0.0667, 0.2588, 0.0745
CMYK	0.00, 0.21, 0.01, 0.07
HSL	302°, 59%, 84%
HSV	302°, 21%, 93%
XYZ	68.5978, 60.6285, 87.4438
YIQ	209.0090, 14.1170, 25.0050

Conversions

Conversions Part 2

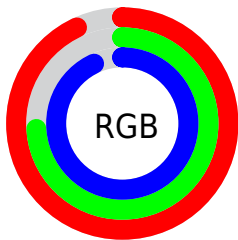
Format	Color
R _Y B	238, 189, 236
Decimal	15646188
CIE Lab	82.18, 25.31, -16.63
CIE LCh	82, 30.288, 326.698
Yxy	60.6285, 0.3166, 0.2798
Android (android.graphics.Color)	4293836268 (0xFFEEDDEC)
YUV	209.0090, 13.3066, 25.4251
Hunter-Lab	77.8643, 20.9946, -12.0794

Details

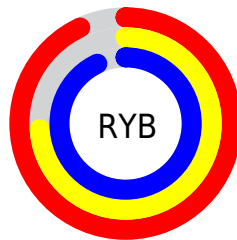
The Android color `4293836268` is a light color, and the websafe version is hex `FFCCFF`. A complement of this color would be `4290637503`, and the grayscale version is `4291940817`.

A 20% lighter version of the original color is `4294964991`, and `4290152372` is the 20% darker color. If you saturate the color by 10%, you get `4293830123`, and if you desaturate by 10%, it is `4293842413`.

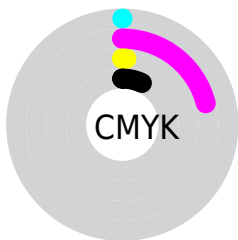
Distribution



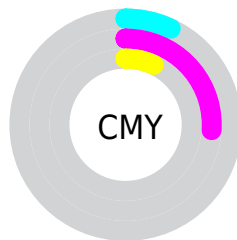
- Red (93%)
- Green (74%)
- Blue (93%)



- Red (93%)
- Yellow (74%)
- Blue (93%)



- Cyan (0%)
- Magenta (21%)
- Yellow (1%)
- Black (7%)



- Cyan (7%)
- Magenta (26%)
- Yellow (7%)

Brightness & Saturation Gradients

These gradients show how the Android color 4293836268 changes by changing the brightness by 10 percent. The first figure shows a shift by +10% for each color and the second figure -10%.

Similar to the brightness gradients but the following saturation gradients show a change of the Android color 4293836268 by changing the saturation by 10% instead.

 4293836268

 4293836268

4294967295

 4291928784

 4294964991


 4290152372

 4288310937

 4286600575

 4284890470

 4283311694

 4281733175

 4280418338

 4278190088

 4293836268

 4293836268

 4293830123

 4293842413

 4293823978

 4293848558

 4293818089

 4293853167

 4293811944

 4293853168

 4293805799

 4293853169

 4293799654

 4293853170

 4293793509

 4293853171

 4293787876

 4293853172

 4293853173

Harmonies

Analogous

The Analogous color harmony consists of three colors that are next to each other on the color wheel.



4291675903



4293836268



4294949073

Triad

The Triadic color harmony groups three colors that are evenly spaced from another and form a triangle on the color wheel.



4293836268



4293183892



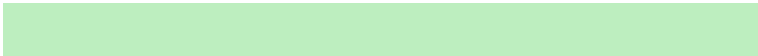
4286045413

Complementary

The Complementary color scheme is a pair of colors which are on the opposite of each other on the color wheel.



4293836268



4290637503

Split Complementary

Split-complementary colors differ from the complementary color scheme. The scheme consists of three colors, the original color and two neighbors of the complement color.



4287093960



4293836268



4291220121

Square

The Square scheme is like the rectangle color scheme, but the four colors are evenly spaced on the color wheel.



4293836268



4294688926



4289059244



4286765307

Rectangle

The Rectangle color scheme consists of four colors that form a rectangle on the color wheel.



4293836268



4294949053



4289059244



4286242012

Sweetspot

The Sweet Spot groups the original color and five complimentary colors.



4293836268



4294963454



4290756078



4286609279



4278190080



4286611584

Same Dimension

The Same Dimension uses a secret algorithm to generate beautiful new colors.



4293836268



4294950908



4293836244



4286082167



4290248880



4281860150

Inverse Universe

The Inverse Universe completely reimagines the original color for something new.



4293836268



4294950908



4290637527



4286082167



4290248880



4281860150

Previews

White Background



This preview shows how the Android color 4293836268 looks on a white background.

Color Contrast Check

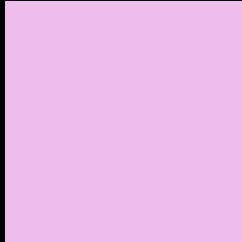
Large Text (above 18pt) WCAG AA × Fail

Any Text WCAG AA × Fail

Large Text (above 18pt) WCAG AAA × Fail

Any Text WCAG AAA × Fail

Black Background



This preview shows how the Android color 4293836268 looks on a black background.

Color Contrast Check

Large Text (above 18pt) WCAG AA ✓ Pass

Any Text WCAG AA ✓ Pass

Large Text (above 18pt) WCAG AAA ✓ Pass

Any Text WCAG AAA ✓ Pass

If you want to check with other color combinations, try the [Color Contrast Checker](#).

Android 4293836268 Background



This preview shows how black text looks on a background with the Android color 4293836268.




This preview shows how white text looks on a background with the Android color 4293836268.

Color Blindness Simulation

Color vision deficiency is a very complex topic, and I could not describe the different causes any better than Wikipedia does, so if you want to learn more, you should check out their [article about color blindness](#).

Dichromacy





Tritanopia
4293575377

Trichromacy



Original Color
4293836268



Protanomaly
4292069106



Deuteranomaly
4292723691

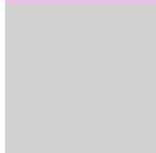


Tritanomaly
4293640411

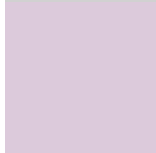
Monochromacy



Original Color
4293836268



Achromatopsia
4291940817



Achromatomaly
4292659931

CSS Examples

Text

The CSS property to change the color of the text to Android 4293836268 is called "color". The color property can be set on classes, ids or directly on the HTML element.

This example shows how text in the color `rgb(238, 189, 236)` looks like.

```
.text, #text, p{  
    color:rgb(238, 189, 236)  
}
```

If you want to add a text shadow in that color use the text-shadow property, you can generate a text shadow directly with our [CSS Text Shadow Generator](#).

Here you see how black text with a 4 pixel rgb(238, 189, 236) colored shadow looks like.

```
.shadow{ text-shadow: 4px 4px 2px rgb(238, 189, 236) }
```

Border

The CSS property to change the border of an element to Android 4293836268 is called "border". The border property can be set on classes, ids or directly on the HTML element.

This example shows the color as border, it can be applied via the CSS property "border" or "border-color".

```
.border, #border, table{ border:4px solid rgb(238, 189, 236) }
```

If only the border color should be changed use the property `border-color`.

```
.border{ border-color:rgb(238, 189, 236) }
```

If you want to add a box shadow in that color use:

Here you see how a box with a 4 pixel `rgb(238, 189, 236)` colored shadow looks like.

```
.boxshadow{ -moz-box-shadow:4px 4px 4px  
4px rgb(238, 189, 236); -webkit-box-  
shadow:4px 4px 4px 4px rgb(238, 189, 236);  
box-shadow:4px 4px 4px 4px rgb(238, 189,  
236) }
```

Background

The CSS property to change the background color of an element to Android 4293836268 is called "background". The background property can be set on classes, ids or directly on the HTML element.

```
.background, #background, body{  
background: rgb(238, 189, 236) }
```

If only the background color should be changed can be used:

```
.background{ background-color: rgb(238,  
189, 236) }
```

This example shows the color as background, it is applied via the CSS property "background".

To optimize and compress your CSS code, you can use our [online CSS compressor and optimizer](#) based on csstidy. If you want to create a linear or radial gradient as background or border, check our [CSS Gradient Generator](#).

Hey! You found this booklet interesting? Support Converting Colors with the new Membership Option!

The pro membership hides all ads, plus gives you double the colors in the color bucket, and more awesome pro features!

[Learn more, Memberships starting at \\$2.50/m!](#)

**Follow me
on Twitter!**

@ConvertingColor