

Converting Colors

Android(4293837042)

Have a look what the booklet for
Android(4293837042) contains.

Android(4293837042)	3
<i>Conversions</i>	4
<i>Details</i>	6
<i>Harmonies</i>	11
<i>Previews</i>	23
<i>Color Blindness Simulation</i>	26
<i>CSS Examples</i>	29

Color

Android(4293837042)

Conversions

Conversions Part 1

Format	Color
Hex	EEC0F2
RGB	238, 192, 242
RGB Percent	93%, 75%, 95%
CMY	0.0667, 0.2471, 0.0510
CMYK	0.02, 0.21, 0.00, 0.05
HSL	295°, 66%, 85%
HSV	295°, 21%, 95%
XYZ	70.1365, 62.2872, 92.3304
YIQ	211.4540, 11.3660, 25.3020

Conversions

Conversions Part 2

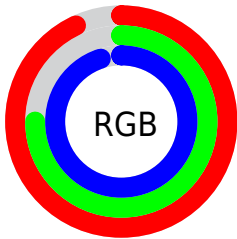
Format	Color
R _Y B	238, 192, 242
Decimal	15646962
CIE _{Lab}	83.07, 24.82, -18.50
CIE _{LCh}	83, 30.955, 323.299
Y _{xy}	62.2872, 0.3121, 0.2771
Android (android.graphics.Color)	4293837042 (0xFFEEC0F2)
YUV	211.4540, 15.0592, 23.2808
Hunter-Lab	78.9223, 20.5152, -14.1173

Details

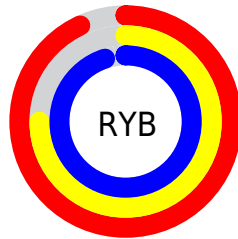
The Android color `4293837042` is a light color, and the websafe version is hex `FFCCFF`. A complement of this color would be `4291097280`, and the grayscale version is `4292072403`.

A 20% lighter version of the original color is `4294965759`, and `4290153146` is the 20% darker color. If you saturate the color by 10%, you get `4293699826`, and if you desaturate by 10%, it is `4293974258`.

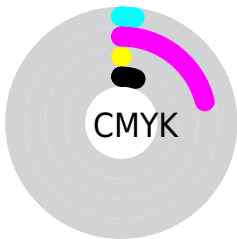
Distribution



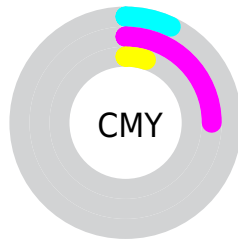
- Red (93%)
- Green (75%)
- Blue (95%)



- Red (93%)
- Yellow (75%)
- Blue (95%)



- Cyan (2%)
- Magenta (21%)
- Yellow (0%)
- Black (5%)



- Cyan (7%)
- Magenta (25%)
- Yellow (5%)

Brightness & Saturation Gradients

These gradients show how the Android color 4293837042 changes by changing the brightness by 10 percent. The first figure shows a shift by +10% for each color and the second figure -10%.

Similar to the brightness gradients but the following saturation gradients show a change of the Android color 4293837042 by changing the saturation by 10% instead.

 4293837042

 4293837042

4294967295

 4291929558

 4294965759


 4290153146

 4288376991

 4286601349

 4284956779

 4283312467

 4281733948

 4280418342

 4278190351

 4293837042

 4293837042

 4293699826

 4293974258

 4293562610

 4294111474

 4293425138

 4294246386

 4293287922

 4294377458

 4293150706

 4294508530

 4293013490

 4294639602

 4292876274

 4294770674

 4292804850

 4294836210

 4294967282

Harmonies

Analogous

The Analogous color harmony consists of three colors that are next to each other on the color wheel.



4291545855



4293837042



4294949591

Triad

The Triadic color harmony groups three colors that are evenly spaced from another and form a triangle on the color wheel.



4293837042



4293577621



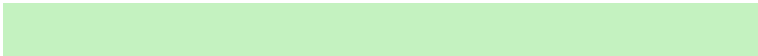
4286111717

Complementary

The Complementary color scheme is a pair of colors which are on the opposite of each other on the color wheel.



4293837042



4291097280

Split Complementary

Split-complementary colors differ from the complementary color scheme. The scheme consists of three colors, the original color and two neighbors of the complement color.



4287356871



4293837042



4291613849

Square

The Square scheme is like the rectangle color scheme, but the four colors are evenly spaced on the color wheel.



4293837042



4294951329



4289452971



4286635005

Rectangle

The Rectangle color scheme consists of four colors that form a rectangle on the color wheel.



4293837042



4294949571



4289452971



4286373851

Sweetspot

The Sweet Spot groups the original color and five complimentary colors.



4293837042



4294897919



4290823410



4286543744



4278190080



4286611584

Same Dimension

The Same Dimension uses a secret algorithm to generate beautiful new colors.



4293837042



4294623231



4294099165



4286016632



4289265848



4281598008

Inverse Universe

The Inverse Universe completely reimagines the original color for something new.



4294099140



4294950852



4290835157



4286082157



4290248719



4281860100

Previews

White Background



This preview shows how the Android color 4293837042 looks on a white background.

Color Contrast Check

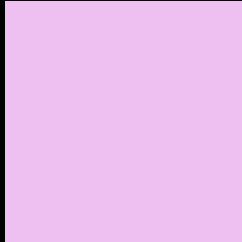
Large Text (above 18pt) WCAG AA × Fail

Any Text WCAG AA × Fail

Large Text (above 18pt) WCAG AAA × Fail

Any Text WCAG AAA × Fail

Black Background



This preview shows how the Android color 4293837042 looks on a black background.

Color Contrast Check

Large Text (above 18pt) WCAG AA ✓ Pass

Any Text WCAG AA ✓ Pass

Large Text (above 18pt) WCAG AAA ✓ Pass

Any Text WCAG AAA ✓ Pass

If you want to check with other color combinations, try the [Color Contrast Checker](#).

Android 4293837042 Background



This preview shows how black text looks on a background with the Android color 4293837042.




This preview shows how white text looks on a background with the Android color 4293837042.

Color Blindness Simulation

Color vision deficiency is a very complex topic, and I could not describe the different causes any better than Wikipedia does, so if you want to learn more, you should check out their [article about color blindness](#).

Dichromacy





Tritanopia
4293576149

Trichromacy



Original Color
4293837042



Protanomaly
4292135160



Deuteranomaly
4292724465

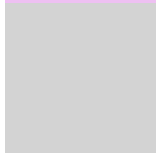


Tritanomaly
4293641184

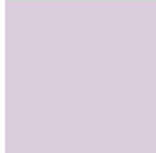
Monochromacy



Original Color
4293837042



Achromatopsia
4292072403



Achromatomaly
4292725982

CSS Examples

Text

The CSS property to change the color of the text to Android 4293837042 is called "color". The color property can be set on classes, ids or directly on the HTML element.

This example shows how text in the color `rgb(238, 192, 242)` looks like.

```
.text, #text, p{  
    color:rgb(238, 192, 242)  
}
```

If you want to add a text shadow in that color use the text-shadow property, you can generate a text shadow directly with our [CSS Text Shadow Generator](#).

Here you see how black text with a 4 pixel rgb(238, 192, 242) colored shadow looks like.

```
.shadow{ text-shadow: 4px 4px 2px rgb(238, 192, 242) }
```

Border

The CSS property to change the border of an element to Android 4293837042 is called "border". The border property can be set on classes, ids or directly on the HTML element.

This example shows the color as border, it can be applied via the CSS property "border" or "border-color".

```
.border, #border, table{ border:4px solid rgb(238, 192, 242) }
```

If only the border color should be changed use the property border-color.

```
.border{ border-color:rgb(238, 192, 242) }
```

If you want to add a box shadow in that color use:

Here you see how a box with a 4 pixel rgb(238, 192, 242) colored shadow looks like.

```
.boxshadow{ -moz-box-shadow:4px 4px 4px  
4px rgb(238, 192, 242); -webkit-box-  
shadow:4px 4px 4px 4px rgb(238, 192, 242);  
box-shadow:4px 4px 4px 4px rgb(238, 192,  
242) }
```

Background

The CSS property to change the background color of an element to Android 4293837042 is called "background". The background property can be set on classes, ids or directly on the HTML element.

```
.background, #background, body{  
background: rgb(238, 192, 242) }
```

If only the background color should be changed can be used:

```
.background{ background-color: rgb(238,  
192, 242) }
```

This example shows the color as background, it is applied via the CSS property "background".

To optimize and compress your CSS code, you can use our [online CSS compressor and optimizer](#) based on csstidy. If you want to create a linear or radial gradient as background or border, check our [CSS Gradient Generator](#).

Hey! You found this booklet interesting? Support Converting Colors with the new Membership Option!

The pro membership hides all ads, plus gives you double the colors in the color bucket, and more awesome pro features!

[Learn more, Memberships starting at \\$2.50/m!](#)

**Follow me
on Twitter!**

@ConvertingColor