

Converting Colors

Android(4293838322)

Have a look what the booklet for
Android(4293838322) contains.

Android(4293838322)	3
<i>Conversions</i>	4
<i>Details</i>	6
<i>Harmonies</i>	11
<i>Previews</i>	23
<i>Color Blindness Simulation</i>	26
<i>CSS Examples</i>	29

Color

Android(4293838322)

Conversions

Conversions Part 1

Format	Color
Hex	EEC5F2
RGB	238, 197, 242
RGB Percent	93%, 77%, 95%
CMY	0.0667, 0.2275, 0.0510
CMYK	0.02, 0.19, 0.00, 0.05
HSL	295°, 63%, 86%
HSV	295°, 19%, 95%
XYZ	71.2532, 64.5205, 92.7026
YIQ	214.3890, 9.9910, 22.6870

Conversions

Conversions Part 2

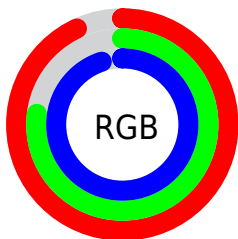
Format	Color
R _Y B	238, 197, 242
Decimal	15648242
CIE Lab	84.24, 22.16, -16.74
CIE LCh	84, 27.770, 322.938
Yxy	64.5205, 0.3119, 0.2824
Android (android.graphics.Color)	4293838322 (0xFFEEC5F2)
YUV	214.3890, 13.6122, 20.7068
Hunter-Lab	80.3246, 17.7730, -12.1993

Details

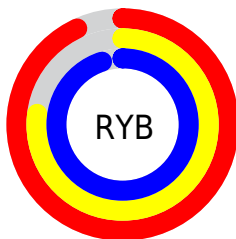
The Android color `4293838322` is a light color, and the websafe version is hex `FFCCFF`. A complement of this color would be `4291424965`, and the grayscale version is `4292269782`.

A 20% lighter version of the original color is `4294967039`, and `4290154426` is the 20% darker color. If you saturate the color by 10%, you get `4293701106`, and if you desaturate by 10%, it is `4293975538`.

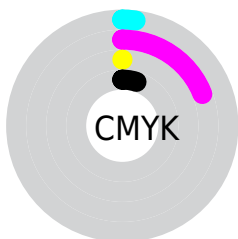
Distribution



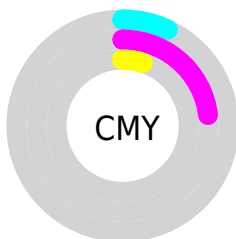
- Red (93%)
- Green (77%)
- Blue (95%)



- Red (93%)
- Yellow (77%)
- Blue (95%)



- Cyan (2%)
- Magenta (19%)
- Yellow (0%)
- Black (5%)



- Cyan (7%)
- Magenta (23%)
- Yellow (5%)

Brightness & Saturation Gradients

These gradients show how the Android color 4293838322 changes by changing the brightness by 10 percent. The first figure shows a shift by +10% for each color and the second figure -10%.

Similar to the brightness gradients but the following saturation gradients show a change of the Android color 4293838322 by changing the saturation by 10% instead.

 4293838322

 4293838322

4294967295

 4291996374

4294967039

 4290154426

 4288378271

 4286602373

 4284957803

 4283313491

 4281800764

 4280418342

 4278190352

 4293838322

 4293838322

 4293701106

 4293975538

 4293563890

 4294112754

 4293426418

 4294246386

 4293223666

 4294442994

 4293086450

 4294574066

 4292949234

 4294705138

 4292812018

 4294836210

 4292674546

 4294967282

 4292608242

Harmonies

Analogous

The Analogous color harmony consists of three colors that are next to each other on the color wheel.



4291743487



4293838322



4294951129

Triad

The Triadic color harmony groups three colors that are evenly spaced from another and form a triangle on the color wheel.



4293838322



4293709471



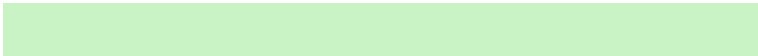
4287095270

Complementary

The Complementary color scheme is a pair of colors which are on the opposite of each other on the color wheel.



4293838322



4291424965

Split Complementary

Split-complementary colors differ from the complementary color scheme. The scheme consists of three colors, the original color and two neighbors of the complement color.



4288143819



4293838322



4291876770

Square

The Square scheme is like the rectangle color scheme, but the four colors are evenly spaced on the color wheel.



4293838322



4294952617



4289912242



4287553019

Rectangle

The Rectangle color scheme consists of four colors that form a rectangle on the color wheel.



4293838322



4294950856



4289912242



4287291869

Sweetspot

The Sweet Spot groups the original color and five complimentary colors.



4293838322



4294897919



4291152370



4286543744



4278190080



4286611584

Same Dimension

The Same Dimension uses a secret algorithm to generate beautiful new colors.



4293838322



4294625279



4294100448



4286016632



4289134776



4281532472

Inverse Universe

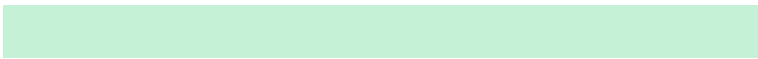
The Inverse Universe completely reimagines the original color for something new.



4294100425



4294952908



4291162839



4286082157



4290248720



4281860101

Previews

White Background



This preview shows how the Android color 4293838322 looks on a white background.

Color Contrast Check

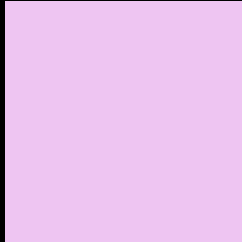
Large Text (above 18pt) WCAG AA × Fail

Any Text WCAG AA × Fail

Large Text (above 18pt) WCAG AAA × Fail

Any Text WCAG AAA × Fail

Black Background



This preview shows how the Android color 4293838322 looks on a black background.

Color Contrast Check

Large Text (above 18pt) WCAG AA ✓ Pass

Any Text WCAG AA ✓ Pass

Large Text (above 18pt) WCAG AAA ✓ Pass

Any Text WCAG AAA ✓ Pass

If you want to check with other color combinations, try the [Color Contrast Checker](#).

Android 4293838322 Background



This preview shows how black text looks on a background with the Android color 4293838322.



This preview shows how white text looks on a background with the Android color 4293838322.

Color Blindness Simulation

Color vision deficiency is a very complex topic, and I could not describe the different causes any better than Wikipedia does, so if you want to learn more, you should check out their [article about color blindness](#).

Dichromacy



Original Color
4293838322

Protanopia
4291482106

Deuteranopia
4292464112



Tritanopia
4293577177

Trichromacy



Original Color
4293838322



Protanomaly
4292333047



Deuteranomaly
4292987633

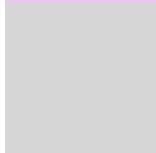


Tritanomaly
4293642466

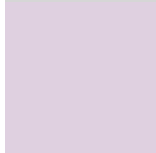
Monochromacy



Original Color
4293838322



Achromatopsia
4292269782



Achromatomaly
4292858080

CSS Examples

Text

The CSS property to change the color of the text to Android 4293838322 is called "color". The color property can be set on classes, ids or directly on the HTML element.

This example shows how text in the color `rgb(238, 197, 242)` looks like.

```
.text, #text, p{  
    color:rgb(238, 197, 242)  
}
```

If you want to add a text shadow in that color use the text-shadow property, you can generate a text shadow directly with our [CSS Text Shadow Generator](#).

Here you see how black text with a 4 pixel rgb(238, 197, 242) colored shadow looks like.

```
.shadow{ text-shadow: 4px 4px 2px rgb(238, 197, 242) }
```

Border

The CSS property to change the border of an element to Android 4293838322 is called "border". The border property can be set on classes, ids or directly on the HTML element.

This example shows the color as border, it can be applied via the CSS property "border" or "border-color".

```
.border, #border, table{ border:4px solid rgb(238, 197, 242) }
```

If only the border color should be changed use the property `border-color`.

```
.border{ border-color:rgb(238, 197, 242) }
```

If you want to add a box shadow in that color use:

Here you see how a box with a 4 pixel `rgb(238, 197, 242)` colored shadow looks like.

```
.boxshadow{ -moz-box-shadow:4px 4px 4px  
4px rgb(238, 197, 242); -webkit-box-  
shadow:4px 4px 4px 4px rgb(238, 197, 242);  
box-shadow:4px 4px 4px 4px rgb(238, 197,  
242) }
```

Background

The CSS property to change the background color of an element to Android 4293838322 is called "background". The background property can be set on classes, ids or directly on the HTML element.

```
.background, #background, body{  
background: rgb(238, 197, 242) }
```

If only the background color should be changed can be used:

```
.background{ background-color: rgb(238,  
197, 242) }
```

This example shows the color as background, it is applied via the CSS property "background".

To optimize and compress your CSS code, you can use our [online CSS compressor and optimizer](#) based on csstidy. If you want to create a linear or radial gradient as background or border, check our [CSS Gradient Generator](#).

Hey! You found this booklet interesting? Support Converting Colors with the new Membership Option!

The pro membership hides all ads, plus gives you double the colors in the color bucket, and more awesome pro features!

[Learn more, Memberships starting at \\$2.50/m!](#)

**Follow me
on Twitter!**

@ConvertingColor