

Converting Colors

Android(4293870446)

Have a look what the booklet for
Android(4293870446) contains.

Android(4293870446)	3
<i>Conversions</i>	4
<i>Details</i>	6
<i>Harmonies</i>	11
<i>Previews</i>	23
<i>Color Blindness Simulation</i>	26
<i>CSS Examples</i>	29

Color

Android(4293870446)

Conversions

Conversions Part 1

Format	Color
Hex	EF436E
RGB	239, 67, 110
RGB Percent	94%, 26%, 43%
CMY	0.0627, 0.7373, 0.5686
CMYK	0.00, 0.72, 0.54, 0.06
HSL	345°, 84%, 60%
HSV	345°, 72%, 94%
XYZ	40.4182, 23.4908, 17.1558
YIQ	123.3300, 88.7090, 49.8370

Conversions

Conversions Part 2

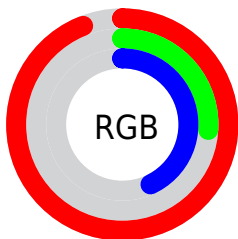
Format	Color
R_{YB}	239, 67, 110
Decimal	15680366
CIE _{Lab}	55.57, 67.49, 15.38
CIE _{LCh}	56, 69.216, 12.840
Yxy	23.4908, 0.4986, 0.2898
Android (android.graphics.Color)	4293870446 (0xFFEF436E)
YUV	123.3300, -6.5717, 101.4426
Hunter-Lab	48.4673, 64.0382, 12.9405

Details

The Android color **4293870446** is a dark color, and the websafe version is hex **FF3366**. The color can be described as middle muted rose. A complement of this color would be **4282642372**, and the grayscale version is **4286282619**.

A 20% lighter version of the original color is **4294934433**, and **4289790015** is the 20% darker color. If you saturate the color by 10%, you get **4293864284**, and if you desaturate by 10%, it is **4293876608**.

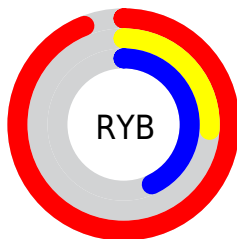
Distribution



Red (94%)

Green (26%)

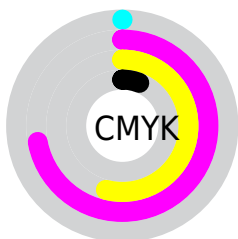
Blue (43%)



Red (94%)

Yellow (26%)

Blue (43%)

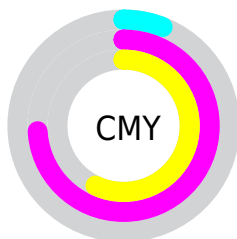


Cyan (0%)

Magenta (72%)

Yellow (54%)

Black (6%)



Cyan (6%)

Magenta (74%)

Yellow (57%)

Brightness & Saturation Gradients


These gradients show how the Android color 4293870446 changes by changing the brightness by 10 percent. The first figure shows a shift by +10% for each color and the second figure -10%.

Similar to the brightness gradients but the following saturation gradients show a change of the Android color 4293870446 by changing the saturation by 10% instead.

 4293870446

 4293870446

4294967295

 4291829334

 4294934433

 4289790015

 4294941884

 4287758377

 4294949336

 4285726742

 4294957044

 4283826178

 4294964479

 4281860098

 4279042048

 4278190080

 4293870446

 4293870446

 4293864284

 4293876608

 4293858122

 4293882770

 4293853244

 4293888932

 4293895094

 4293901000

 4293907162

 4293913323

 4293918717

 4293918719

Harmonies

Analogous

The Analogous color harmony consists of three colors that are next to each other on the color wheel.



4292758442



4293870446



4292958773

Triad

The Triadic color harmony groups three colors that are evenly spaced from another and form a triangle on the color wheel.



4293870446



4282488608



4278228728

Complementary

The Complementary color scheme is a pair of colors which are on the opposite of each other on the color wheel.



4293870446



4282642372

Split Complementary

Split-complementary colors differ from the complementary color scheme. The scheme consists of three colors, the original color and two neighbors of the complement color.



4278230742



4293870446



4278230623

Square

The Square scheme is like the rectangle color scheme, but the four colors are evenly spaced on the color wheel.



4293870446



4287138304



4278231198



4279076091

Rectangle

The Rectangle color scheme consists of four colors that form a rectangle on the color wheel.



4293870446



4291456265



4278231198



4278229488

Sweetspot

The Sweet Spot groups the original color and five complimentary colors.



4293870446



4294952917



4291052527



4286602855



4278190080



4286611584

Same Dimension

The Same Dimension uses a secret algorithm to generate beautiful new colors.



4293870446



4294911067



4293881411



4286082159



4290248750



4281860110

Inverse Universe

The Inverse Universe completely reimagines the original color for something new.



4293870446



4294911067



4282631407



4286082159



4290248750



4281860110

Previews

White Background



This preview shows how the Android color 4293870446 looks on a white background.

Color Contrast Check

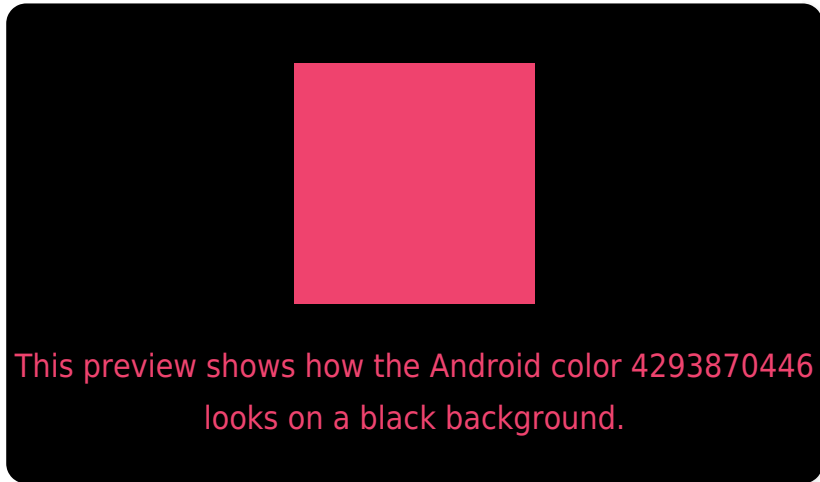
Large Text (above 18pt) WCAG AA ✓ Pass

Any Text WCAG AA ✗ Fail

Large Text (above 18pt) WCAG AAA ✗ Fail

Any Text WCAG AAA ✗ Fail

Black Background



Color Contrast Check

Large Text (above 18pt) WCAG AA ✓ Pass

Any Text WCAG AA ✓ Pass

Large Text (above 18pt) WCAG AAA ✓ Pass

Any Text WCAG AAA × Fail

If you want to check with other color combinations, try the [Color Contrast Checker](#).

Android 4293870446 Background



This preview shows how black text looks on a background with the Android color 4293870446.



This preview shows how white text looks on a background with the Android color 4293870446.

Color Blindness Simulation

Color vision deficiency is a very complex topic, and I could not describe the different causes any better than Wikipedia does, so if you want to learn more, you should check out their [article about color blindness](#).

Dichromacy

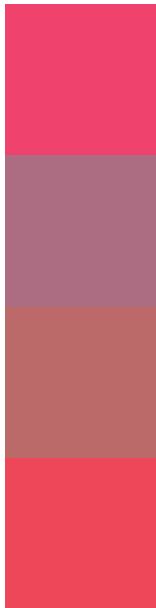


Original Color
4293870446

Protanopia
4286940559

Deuteranopia
4288512102

Trichromacy



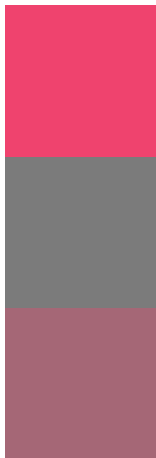
Original Color
4293870446

Protanomaly
4289490307

Deuteranomaly
4290472553

Tritanomaly
4293805914

Monochromacy



Original Color
4293870446

Achromatopsia
4286282619

Achromatomaly
4289030006

CSS Examples

Text

The CSS property to change the color of the text to Android 4293870446 is called "color". The color property can be set on classes, ids or directly on the HTML element.

This example shows how text in the color `rgb(239, 67, 110)` looks like.

```
.text, #text, p{  
    color:rgb(239, 67, 110)  
}
```

If you want to add a text shadow in that color use the text-shadow property, you can generate a text shadow directly with our [CSS Text Shadow Generator](#).

Here you see how black text with a 4 pixel rgb(239, 67, 110) colored shadow looks like.

```
.shadow{ text-shadow: 4px 4px 2px rgb(239, 67, 110) }
```

Border

The CSS property to change the border of an element to Android 4293870446 is called "border". The border property can be set on classes, ids or directly on the HTML element.

This example shows the color as border, it can be applied via the CSS property "border" or "border-color".

```
.border, #border, table{ border:4px solid rgb(239, 67, 110) }
```

If only the border color should be changed use the property `border-color`.

```
.border{ border-color:rgb(239, 67, 110) }
```

If you want to add a box shadow in that color use:

Here you see how a box with a 4 pixel `rgb(239, 67, 110)` colored shadow looks like.

```
.boxshadow{ -moz-box-shadow:4px 4px 4px  
4px rgb(239, 67, 110); -webkit-box-  
shadow:4px 4px 4px 4px rgb(239, 67, 110);  
box-shadow:4px 4px 4px 4px rgb(239, 67,  
110) }
```

Background

The CSS property to change the background color of an element to Android 4293870446 is called "background". The background property can be set on classes, ids or directly on the HTML element.

```
.background, #background, body{  
background: rgb(239, 67, 110) }
```

If only the background color should be changed can be used:

```
.background{ background-color: rgb(239, 67,  
110) }
```

This example shows the color as background, it is applied via the CSS property "background".

To optimize and compress your CSS code, you can use our [online CSS compressor and optimizer](#) based on csstidy. If you want to create a linear or radial gradient as background or border, check our [CSS Gradient Generator](#).

Hey! You found this booklet interesting? Support Converting Colors with the new Membership Option!

The pro membership hides all ads, plus gives you double the colors in the color bucket, and more awesome pro features!

[Learn more, Memberships starting at \\$2.50/m!](#)

**Follow me
on Twitter!**

@ConvertingColor