

Converting Colors

Android(4293871753)

Have a look what the booklet for
Android(4293871753) contains.

Android(4293871753)	3
<i>Conversions</i>	4
<i>Details</i>	6
<i>Harmonies</i>	11
<i>Previews</i>	23
<i>Color Blindness Simulation</i>	26
<i>CSS Examples</i>	29

Color

Android(4293871753)

Conversions

Conversions Part 1

Format	Color
Hex	EF4889
RGB	239, 72, 137
RGB Percent	94%, 28%, 54%
CMY	0.0627, 0.7176, 0.4627
CMYK	0.00, 0.70, 0.43, 0.06
HSL	337°, 84%, 61%
HSV	337°, 70%, 94%
XYZ	42.4293, 24.7916, 26.2159
YIQ	129.3430, 78.6670, 55.6190

Conversions

Conversions Part 2

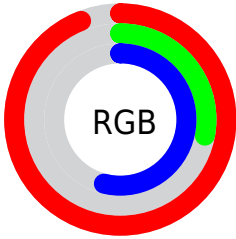
Format	Color
R_{YB}	239, 72, 137
Decimal	15681673
CIE _{Lab}	56.87, 68.03, 1.22
CIE _{LCh}	57, 68.040, 1.026
Yxy	24.7916, 0.4541, 0.2653
Android (android.graphics.Color)	4293871753 (0xFFEF4889)
YUV	129.3430, 3.7749, 96.1692
Hunter-Lab	49.7912, 64.9735, 3.6366

Details

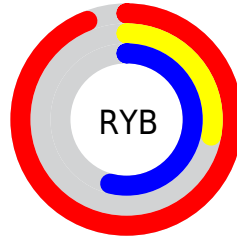
The Android color **4293871753** is a dark color, and the websafe version is hex **FF6699**. The color can be described as middle muted rose. A complement of this color would be **4282970030**, and the grayscale version is **4286677377**.

A 20% lighter version of the original color is **4294935486**, and **4289855575** is the 20% darker color. If you saturate the color by 10%, you get **4293865594**, and if you desaturate by 10%, it is **4293877912**.

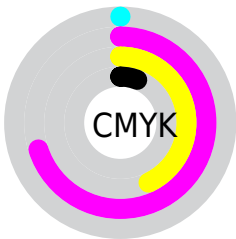
Distribution



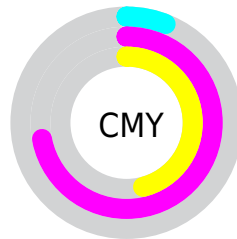
- Red (94%)
- Green (28%)
- Blue (54%)



- Red (94%)
- Yellow (28%)
- Blue (54%)



- Cyan (0%)
- Magenta (70%)
- Yellow (43%)
- Black (6%)



- Cyan (6%)
- Magenta (72%)
- Yellow (46%)

Brightness & Saturation Gradients


These gradients show how the Android color 4293871753 changes by changing the brightness by 10 percent. The first figure shows a shift by +10% for each color and the second figure -10%.

Similar to the brightness gradients but the following saturation gradients show a change of the Android color 4293871753 by changing the saturation by 10% instead.

 4293871753

 4293871753

4294967295

 4291831152

 4294935486

 4289855575

 4294942938

 4287889472

 4294950646

 4285923371

 4294958079

 4283957270

 4294965759

 4282187779

 4279762945

 4278190080

 4293871753

 4293871753

 4293865594

 4293877912

 4293859436

 4293884070

 4293853277

 4293890229

 4293896387

 4293902546

 4293908449

 4293914607

 4293918718

 4293918719

Harmonies

Analogous

The Analogous color harmony consists of three colors that are next to each other on the color wheel.



4291844803



4293871753



4293678159

Triad

The Triadic color harmony groups three colors that are evenly spaced from another and form a triangle on the color wheel.



4293871753



4284913160



4278230512

Complementary

The Complementary color scheme is a pair of colors which are on the opposite of each other on the color wheel.



4293871753



4282970030

Split Complementary

Split-complementary colors differ from the complementary color scheme. The scheme consists of three colors, the original color and two neighbors of the complement color.



4278232004



4293871753



4278230859

Square

The Square scheme is like the rectangle color scheme, but the four colors are evenly spaced on the color wheel.



4293871753



4288841472



4278231945



4278226943

Rectangle

The Rectangle color scheme consists of four colors that form a rectangle on the color wheel.



4293871753



4292634155



4278231945



4278231268

Sweetspot

The Sweet Spot groups the original color and five complimentary colors.



4293871753



4294953438



4289480943



4286603372



4278190080



4286611584

Same Dimension

The Same Dimension uses a secret algorithm to generate beautiful new colors.



4293871753



4294912380



4293876040



4286082161



4290248775



4281860118

Inverse Universe

The Inverse Universe completely reimagines the original color for something new.



4293871753



4294912380



4282965743



4286082161



4290248775



4281860118

Previews

White Background



This preview shows how the Android color 4293871753 looks on a white background.

Color Contrast Check

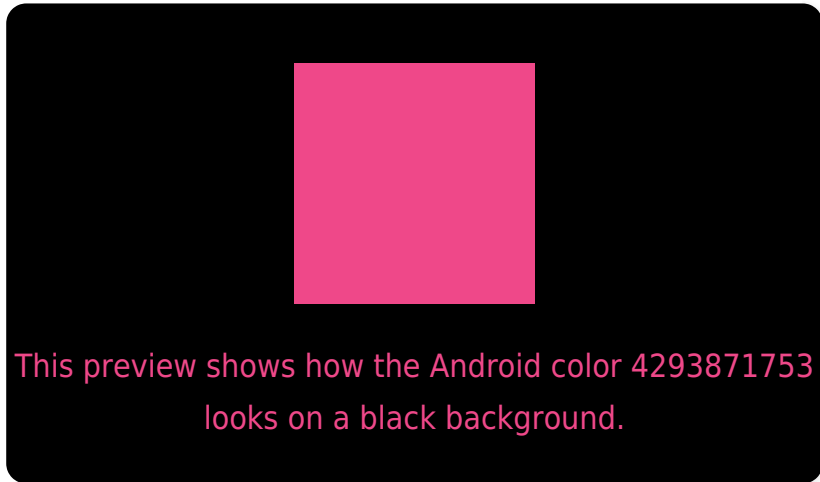
Large Text (above 18pt) WCAG AA ✓ Pass

Any Text WCAG AA ✗ Fail

Large Text (above 18pt) WCAG AAA ✗ Fail

Any Text WCAG AAA ✗ Fail

Black Background



Color Contrast Check

Large Text (above 18pt) WCAG AA ✓ Pass

Any Text WCAG AA ✓ Pass

Large Text (above 18pt) WCAG AAA ✓ Pass

Any Text WCAG AAA × Fail

If you want to check with other color combinations, try the [Color Contrast Checker](#).

Android 4293871753 Background



This preview shows how black text looks on a background with the Android color 4293871753.



This preview shows how white text looks on a background with the Android color 4293871753.

Color Blindness Simulation

Color vision deficiency is a very complex topic, and I could not describe the different causes any better than Wikipedia does, so if you want to learn more, you should check out their [article about color blindness](#).

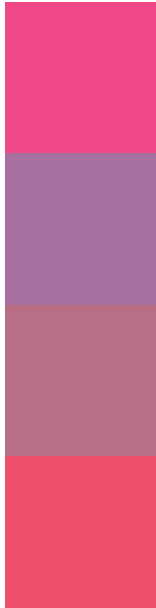
Dichromacy





Tritanopia
4293677912

Trichromacy



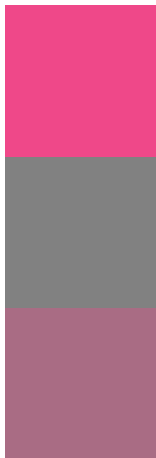
Original Color
4293871753

Protanomaly
4289228961

Deuteranomaly
4290276996

Tritanomaly
4293742442

Monochromacy



Original Color
4293871753

Achromatopsia
4286677377

Achromatomaly
4289293444

CSS Examples

Text

The CSS property to change the color of the text to Android 4293871753 is called "color". The color property can be set on classes, ids or directly on the HTML element.

This example shows how text in the color `rgb(239, 72, 137)` looks like.

```
.text, #text, p{  
    color:rgb(239, 72, 137)  
}
```

If you want to add a text shadow in that color use the text-shadow property, you can generate a text shadow directly with our [CSS Text Shadow Generator](#).

Here you see how black text with a 4 pixel rgb(239, 72, 137) colored shadow looks like.

```
.shadow{ text-shadow: 4px 4px 2px rgb(239, 72, 137) }
```

Border

The CSS property to change the border of an element to Android 4293871753 is called "border". The border property can be set on classes, ids or directly on the HTML element.

This example shows the color as border, it can be applied via the CSS property "border" or "border-color".

```
.border, #border, table{ border:4px solid rgb(239, 72, 137) }
```

If only the border color should be changed use the property border-color.

```
.border{ border-color:rgb(239, 72, 137) }
```

If you want to add a box shadow in that color use:

Here you see how a box with a 4 pixel rgb(239, 72, 137) colored shadow looks like.

```
.boxshadow{ -moz-box-shadow:4px 4px 4px  
4px rgb(239, 72, 137); -webkit-box-  
shadow:4px 4px 4px 4px rgb(239, 72, 137);  
box-shadow:4px 4px 4px 4px rgb(239, 72,  
137) }
```

Background

The CSS property to change the background color of an element to Android 4293871753 is called "background". The background property can be set on classes, ids or directly on the HTML element.

```
.background, #background, body{  
background: rgb(239, 72, 137) }
```

If only the background color should be changed can be used:

```
.background{ background-color: rgb(239, 72,  
137) }
```

This example shows the color as background, it is applied via the CSS property "background".

To optimize and compress your CSS code, you can use our [online CSS compressor and optimizer](#) based on csstidy. If you want to create a linear or radial gradient as background or border, check our [CSS Gradient Generator](#).

Hey! You found this booklet interesting? Support Converting Colors with the new Membership Option!

The pro membership hides all ads, plus gives you double the colors in the color bucket, and more awesome pro features!

[Learn more, Memberships starting at \\$2.50/m!](#)

**Follow me
on Twitter!**

@ConvertingColor