

Converting Colors

Android(4293882014)

Have a look what the booklet for
Android(4293882014) contains.

Android(4293882014)	3
<i>Conversions</i>	4
<i>Details</i>	6
<i>Harmonies</i>	11
<i>Previews</i>	23
<i>Color Blindness Simulation</i>	26
<i>CSS Examples</i>	29

Color

Android(4293882014)

Conversions

Conversions Part 1

Format	Color
Hex	EF709E
RGB	239, 112, 158
RGB Percent	94%, 44%, 62%
CMY	0.0627, 0.5608, 0.3804
CMYK	0.00, 0.53, 0.34, 0.06
HSL	338°, 80%, 69%
HSV	338°, 53%, 94%
XYZ	47.5623, 32.4077, 36.0962
YIQ	155.2170, 60.9260, 41.2300

Conversions

Conversions Part 2

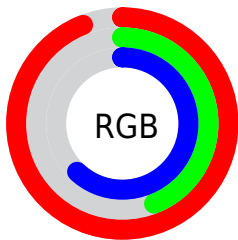
Format	Color
R_{YB}	239, 112, 158
Decimal	15691934
CIE _{Lab}	63.68, 53.52, -1.04
CIE _{LCh}	64, 53.527, 358.884
Yxy	32.4077, 0.4098, 0.2792
Android (android.graphics.Color)	4293882014 (0xFFEF709E)
YUV	155.2170, 1.3720, 73.4777
Hunter-Lab	56.9277, 49.5107, 2.2553

Details

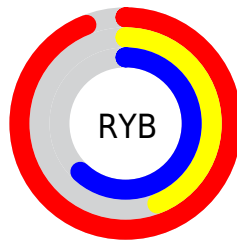
The Android color `4293882014` is a light color, and the websafe version is hex `FF6699`. A complement of this color would be `4285591489`, and the grayscale version is `4288387995`.

A 20% lighter version of the original color is `4294944725`, and `4290001259` is the 20% darker color. If you saturate the color by 10%, you get `4293875855`, and if you desaturate by 10%, it is `4293888173`.

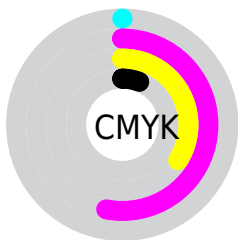
Distribution



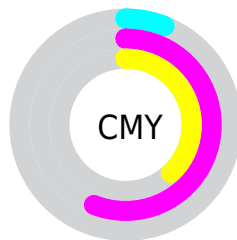
- Red (94%)
- Green (44%)
- Blue (62%)



- Red (94%)
- Yellow (44%)
- Blue (62%)



- Cyan (0%)
- Magenta (53%)
- Yellow (34%)
- Black (6%)



- Cyan (6%)
- Magenta (56%)
- Yellow (38%)

Brightness & Saturation Gradients

These gradients show how the Android color #4293882014 changes by changing the brightness by 10 percent. The first figure shows a shift by +10% for each color and the second figure -10%.

Similar to the brightness gradients but the following saturation gradients show a change of the Android color #4293882014 by changing the saturation by 10% instead.

 4293882014

 4293882014

4294967295

 4291908996

 4294944725

 4290001259

 4294952177

 4288092499

 4294959615

 4286185532

4294967039

 4284350502

 4282581009

 4280811521

 4278190080

 4293882014

 4293882014

 4293875855

 4293888173

 4293869696

 4293894332

 4293863536

 4293900492

 4293857377

 4293906651

 4293853271

 4293912554

 4293918713

 4293918719

Harmonies

Analogous

The Analogous color harmony consists of three colors that are next to each other on the color wheel.



4292049868



4293882014



4293948783

Triad

The Triadic color harmony groups three colors that are evenly spaced from another and form a triangle on the color wheel.



4293882014



4287079746



4278234347

Complementary

The Complementary color scheme is a pair of colors which are on the opposite of each other on the color wheel.



4293882014



4285591489

Split Complementary

Split-complementary colors differ from the complementary color scheme. The scheme consists of three colors, the original color and two neighbors of the complement color.



4278235591



4293882014



4282822247

Square

The Square scheme is like the rectangle color scheme, but the four colors are evenly spaced on the color wheel.



4293882014



4290156341



4278235799



4280656121

Rectangle

The Rectangle color scheme consists of four colors that form a rectangle on the color wheel.



4293882014



4293164884



4278235799



4278234849

Sweetspot

The Sweet Spot groups the original color and five complimentary colors.



4293882014



4294956773



4290801903



4286605168



4278190080



4286611584

Same Dimension

The Same Dimension uses a secret algorithm to generate beautiful new colors.



4293882014



4294925463



4293886320



4286082160



4290248771



4281860116

Inverse Universe

The Inverse Universe completely reimagines the original color for something new.



4293882014



4294925463



4285587183



4286082160



4290248771



4281860116

Previews

White Background



This preview shows how the Android color 4293882014 looks on a white background.

Color Contrast Check

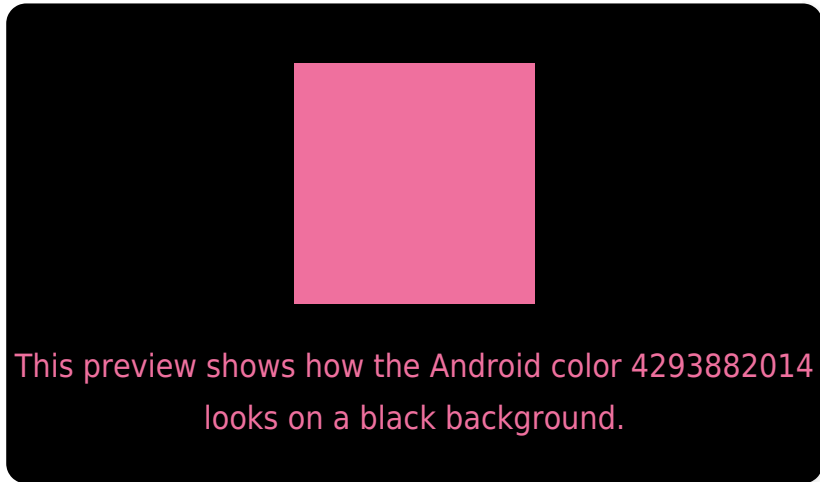
Large Text (above 18pt) WCAG AA × Fail

Any Text WCAG AA × Fail

Large Text (above 18pt) WCAG AAA × Fail

Any Text WCAG AAA × Fail

Black Background



Color Contrast Check

Large Text (above 18pt) WCAG AA ✓ Pass

Any Text WCAG AA ✓ Pass

Large Text (above 18pt) WCAG AAA ✓ Pass

Any Text WCAG AAA ✓ Pass

If you want to check with other color combinations, try the [Color Contrast Checker](#).

Android 4293882014 Background



This preview shows how black text looks on a background with the Android color 4293882014.



This preview shows how white text looks on a background with the Android color 4293882014.

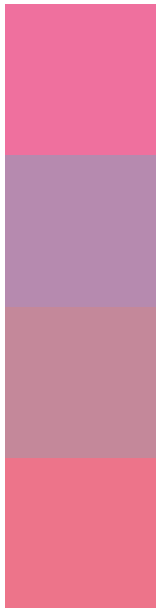
Color Blindness Simulation

Color vision deficiency is a very complex topic, and I could not describe the different causes any better than Wikipedia does, so if you want to learn more, you should check out their [article about color blindness](#).

Dichromacy



Trichromacy



Original Color
4293882014

Protanomaly
4290153135

Deuteranomaly
4291070106

Tritanomaly
4293751946

Monochromacy



Original Color
4293882014

Achromatopsia
4288387995

Achromatomaly
4290415516

CSS Examples

Text

The CSS property to change the color of the text to Android 4293882014 is called "color". The color property can be set on classes, ids or directly on the HTML element.

This example shows how text in the color `rgb(239, 112, 158)` looks like.

```
.text, #text, p{  
    color:rgb(239, 112, 158)  
}
```

If you want to add a text shadow in that color use the text-shadow property, you can generate a text shadow directly with our [CSS Text Shadow Generator](#).

Here you see how black text with a 4 pixel rgb(239, 112, 158) colored shadow looks like.

```
.shadow{ text-shadow: 4px 4px 2px rgb(239, 112, 158) }
```

Border

The CSS property to change the border of an element to Android 4293882014 is called "border". The border property can be set on classes, ids or directly on the HTML element.

This example shows the color as border, it can be applied via the CSS property "border" or "border-color".

```
.border, #border, table{ border:4px solid rgb(239, 112, 158) }
```

If only the border color should be changed use the property `border-color`.

```
.border{ border-color:rgb(239, 112, 158) }
```

If you want to add a box shadow in that color use:

Here you see how a box with a 4 pixel `rgb(239, 112, 158)` colored shadow looks like.

```
.boxshadow{ -moz-box-shadow:4px 4px 4px  
4px rgb(239, 112, 158); -webkit-box-  
shadow:4px 4px 4px 4px rgb(239, 112, 158);  
box-shadow:4px 4px 4px 4px rgb(239, 112,  
158) }
```

Background

The CSS property to change the background color of an element to Android 4293882014 is called "background". The background property can be set on classes, ids or directly on the HTML element.

```
.background, #background, body{  
background: rgb(239, 112, 158) }
```

If only the background color should be changed can be used:

```
.background{ background-color: rgb(239,  
112, 158) }
```

This example shows the color as background, it is applied via the CSS property "background".

To optimize and compress your CSS code, you can use our [online CSS compressor and optimizer](#) based on csstidy. If you want to create a linear or radial gradient as background or border, check our [CSS Gradient Generator](#).

Hey! You found this booklet interesting? Support Converting Colors with the new Membership Option!

The pro membership hides all ads, plus gives you double the colors in the color bucket, and more awesome pro features!

[Learn more, Memberships starting at \\$2.50/m!](#)

**Follow me
on Twitter!**

@ConvertingColor