

# Converting Colors

Android(4293889392)

Have a look what the booklet for  
Android(4293889392) contains.

<b>Android(4293889392)</b> .....	3
<b><i>Conversions</i></b> .....	4
<b><i>Details</i></b> .....	6
<b><i>Harmonies</i></b> .....	11
<b><i>Previews</i></b> .....	23
<b><i>Color Blindness Simulation</i></b> .....	26
<b><i>CSS Examples</i></b> .....	29

# **Color**

**Android(4293889392)**

# Conversions

## Conversions Part 1

Format	Color
Hex	EF8D70
RGB	239, 141, 112
RGB Percent	94%, 55%, 44%
CMY	0.0627, 0.4471, 0.5608
CMYK	0.00, 0.41, 0.53, 0.06
HSL	14°, 80%, 69%
HSV	14°, 53%, 94%
XYZ	48.0461, 38.5703, 20.2417
YIQ	166.9960, 67.7170, 11.7570

# Conversions

## Conversions Part 2

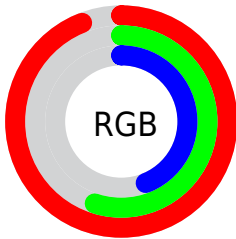
<b>Format</b>	<b>Color</b>
R <sub>Y</sub> B	239, 150, 112
Decimal	15699312
CIE Lab	68.44, 34.34, 31.44
CIE LCh	68, 46.557, 42.475
Yxy	38.5703, 0.4496, 0.3609
Android (android.graphics.Color)	4293889392 (0xFFEF8D70)
YUV	166.9960, -27.1130, 63.1475
Hunter-Lab	62.1050, 29.4086, 24.1493

# Details

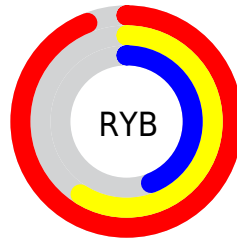
The Android color **4293889392** is a light color, and the websafe version is hex **FF9966**. A complement of this color would be **4285584111**, and the grayscale version is **4289177511**.

A 20% lighter version of the original color is **4294952100**, and **4289943872** is the 20% darker color. If you saturate the color by 10%, you get **4293884760**, and if you desaturate by 10%, it is **4293894024**.

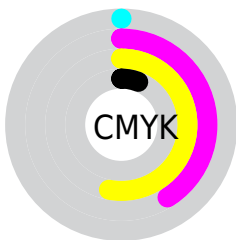
# Distribution



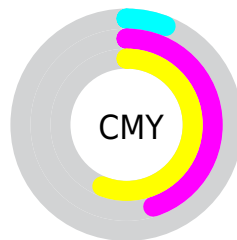
- Red (94%)
- Green (55%)
- Blue (44%)



- Red (94%)
- Yellow (59%)
- Blue (44%)



- Cyan (0%)
- Magenta (41%)
- Yellow (53%)
- Black (6%)



- Cyan (6%)
- Magenta (45%)
- Yellow (56%)

# Brightness & Saturation Gradients

These gradients show how the Android color 4293889392 changes by changing the brightness by 10 percent. The first figure shows a shift by +10% for each color and the second figure -10%.

Similar to the brightness gradients but the following saturation gradients show a change of the Android color 4293889392 by changing the saturation by 10% instead.





4293889392



4293889392

4294967295



4291916631



4294952100



4289943872



4294959295



4288036905



4294966747



4286130195



4294967288



4284288256



4282449920



4280877057



4278190080



4293889392



4293889392

 4293884760

 4293894024

 4293879872

 4293898912

 4293875240

 4293903544

 4293870352

 4293908432

 4293867264

 4293913063

 4293917951

 4293918719

# Harmonies

## Analogous

The Analogous color harmony consists of three colors that are next to each other on the color wheel.



4294411415



4293889392



4292189270

# Triad

The Triadic color harmony groups three colors that are evenly spaced from another and form a triangle on the color wheel.



4293889392



4282629004



4286752249

# Complementary

The Complementary color scheme is a pair of colors which are on the opposite of each other on the color wheel.



4293889392



4285584111

# Split Complementary

Split-complementary colors differ from the complementary color scheme. The scheme consists of three colors, the original color and two neighbors of the complement color.



4278235895



4293889392



4278238648

# Square

The Square scheme is like the rectangle color scheme, but the four colors are evenly spaced on the color wheel.



4293889392



4286690663



4278237919



4290876901

# Rectangle

The Rectangle color scheme consists of four colors that form a rectangle on the color wheel.



4293889392



4290618961



4278237919



4284918523

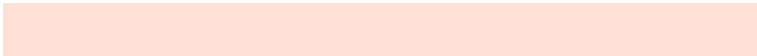


# Sweetspot

The Sweet Spot groups the original color and five complimentary colors.



4293889392



4294959318



4293882067



4286606695



4278190080



4286611584



# Same Dimension

The Same Dimension uses a secret algorithm to generate beautiful new colors.



4293889392



4294934876



4293905264



4286082924



4290259456



4281863424



# Inverse Universe

The Inverse Universe completely reimagines the original color for something new.



4285584111



4284275455



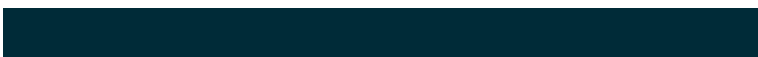
4285568239



4285298040



4278226616



4278201144



# Previews

## White Background



This preview shows how the Android color 4293889392 looks on a white background.

## Color Contrast Check

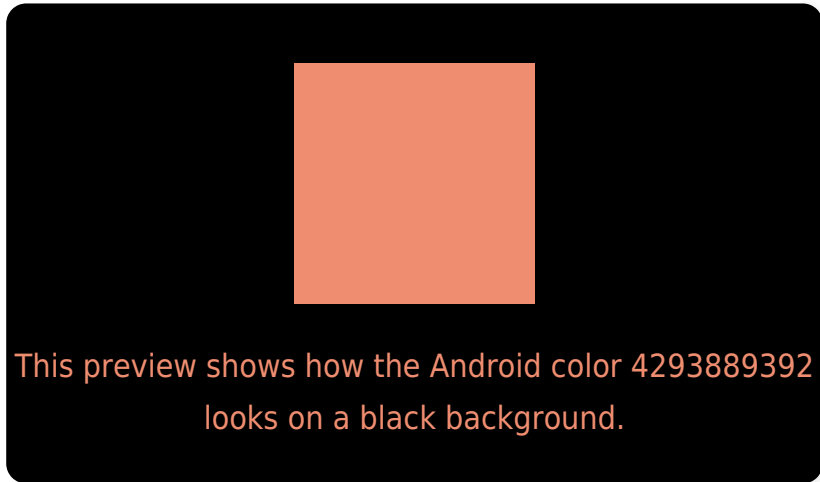
Large Text (above 18pt) WCAG AA × Fail

Any Text WCAG AA × Fail

Large Text (above 18pt) WCAG AAA × Fail

Any Text WCAG AAA × Fail

# Black Background



## Color Contrast Check

Large Text (above 18pt) WCAG AA ✓ Pass

Any Text WCAG AA ✓ Pass

Large Text (above 18pt) WCAG AAA ✓ Pass

Any Text WCAG AAA ✓ Pass

If you want to check with other color combinations, try the [Color Contrast Checker](#).



# Android 4293889392 Background



This preview shows how black text looks on a background with the Android color 4293889392.



This preview shows how white text looks on a background with the Android color 4293889392.

# Color Blindness Simulation

Color vision deficiency is a very complex topic, and I could not describe the different causes any better than Wikipedia does, so if you want to learn more, you should check out their [article about color blindness](#).

## Dichromacy



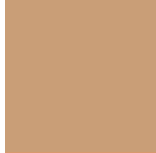


**Tritanopia**  
4294084754

# Trichromacy



**Original Color**  
4293889392



**Protanomaly**  
4291403383



**Deuteranomaly**  
4292319597

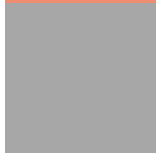


**Tritanomaly**  
4294019718

# Monochromacy



**Original Color**  
4293889392



**Achromatopsia**  
4289177511



**Achromatomaly**  
4290879123

# CSS Examples

## Text

The CSS property to change the color of the text to Android 4293889392 is called "color". The color property can be set on classes, ids or directly on the HTML element.

This example shows how text in the color `rgb(239, 141, 112)` looks like.

```
.text, #text, p{  
    color:rgb(239, 141, 112)  
}
```

If you want to add a text shadow in that color use the text-shadow property, you can generate a text shadow directly with our [CSS Text Shadow Generator](#).

Here you see how black text with a 4 pixel rgb(239, 141, 112) colored shadow looks like.

```
.shadow{ text-shadow: 4px 4px 2px rgb(239, 141, 112) }
```

## Border

The CSS property to change the border of an element to Android 4293889392 is called "border". The border property can be set on classes, ids or directly on the HTML element.

This example shows the color as border, it can be applied via the CSS property "border" or "border-color".

```
.border, #border, table{ border:4px solid rgb(239, 141, 112) }
```

If only the border color should be changed use the property `border-color`.

```
.border{ border-color:rgb(239, 141, 112) }
```

If you want to add a box shadow in that color use:

Here you see how a box with a 4 pixel `rgb(239, 141, 112)` colored shadow looks like.

```
.boxshadow{ -moz-box-shadow:4px 4px 4px  
4px rgb(239, 141, 112); -webkit-box-  
shadow:4px 4px 4px 4px rgb(239, 141, 112);  
box-shadow:4px 4px 4px 4px rgb(239, 141,  
112) }
```

# Background

The CSS property to change the background color of an element to Android 4293889392 is called "background". The background property can be set on classes, ids or directly on the HTML element.

```
.background, #background, body{  
background: rgb(239, 141, 112) }
```

If only the background color should be changed can be used:

```
.background{ background-color: rgb(239,  
141, 112) }
```

This example shows the color as background, it is applied via the CSS property "background".

To optimize and compress your CSS code, you can use our [online CSS compressor and optimizer](#) based on csstidy. If you want to create a linear or radial gradient as background or border, check our [CSS Gradient Generator](#).



Hey! You found this booklet interesting? Support Converting Colors with the new Membership Option!

The pro membership hides all ads, plus gives you double the colors in the color bucket, and more awesome pro features!

**[Learn more, Memberships starting at \\$2.50/m!](#)**

**Follow me  
on Twitter!**

@ConvertingColor