

# Converting Colors

Android(4293894056)

Have a look what the booklet for  
Android(4293894056) contains.

<b>Android(4293894056)</b> .....	3
<i><b>Conversions</b></i> .....	4
<i><b>Details</b></i> .....	6
<i><b>Harmonies</b></i> .....	11
<i><b>Previews</b></i> .....	23
<i><b>Color Blindness Simulation</b></i> .....	26
<i><b>CSS Examples</b></i> .....	29

# **Color**

**Android(4293894056)**

# Conversions

## Conversions Part 1

Format	Color
Hex	EF9FA8
RGB	239, 159, 168
RGB Percent	94%, 62%, 66%
CMY	0.0627, 0.3765, 0.3412
CMYK	0.00, 0.33, 0.30, 0.06
HSL	353°, 71%, 78%
HSV	353°, 33%, 94%
XYZ	55.0626, 45.9741, 43.0176
YIQ	183.9460, 44.7910, 19.7590

# Conversions

## Conversions Part 2

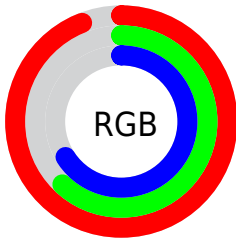
<b>Format</b>	<b>Color</b>
<b>R<sub>YB</sub></b>	239, 159, 168
Decimal	15703976
CIE <sub>Lab</sub>	73.53, 30.91, 7.61
CIE <sub>LCh</sub>	74, 31.836, 13.821
Yxy	45.9741, 0.3822, 0.3191
Android (android.graphics.Color)	4293894056 (0xFFEF9FA8)
YUV	183.9460, -7.8614, 48.2824
Hunter-Lab	67.8042, 26.2993, 9.8472

# Details

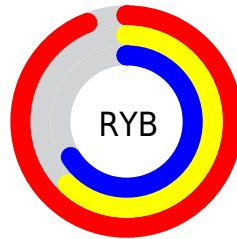
The Android color `4293894056` is a light color, and the websafe version is hex `FF9999`. A complement of this color would be `4288671718`, and the grayscale version is `4290295992`.

A 20% lighter version of the original color is `4294956767`, and `4290079604` is the 20% darker color. If you saturate the color by 10%, you get `4293887891`, and if you desaturate by 10%, it is `4293900221`.

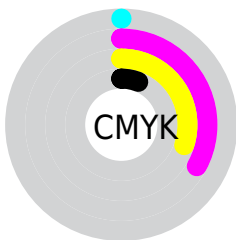
# Distribution



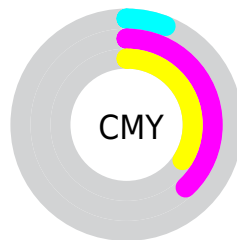
- Red (94%)
- Green (62%)
- Blue (66%)



- Red (94%)
- Yellow (62%)
- Blue (66%)



- Cyan (0%)
- Magenta (33%)
- Yellow (30%)
- Black (6%)



- Cyan (6%)
- Magenta (38%)
- Yellow (34%)

# Brightness & Saturation Gradients

These gradients show how the Android color 4293894056 changes by changing the brightness by 10 percent. The first figure shows a shift by +10% for each color and the second figure -10%.

Similar to the brightness gradients but the following saturation gradients show a change of the Android color 4293894056 by changing the saturation by 10% instead.



 4293894056

 4293894056

4294967295

 4291986574

 4294956767

 4290079604


 4294964220

 4288237916

 4286462276

 4284686638

 4282976025

 4281466880

 4278714368

 4278190080

 4293894056

 4293894056

 4293887891

 4293900221

 4293881726

 4293906386

 4293875560

 4293912552

 4293869395

 4293918717

 4293863486

 4293918719

 4293857321

 4293853211

# Harmonies

## Analogous

The Analogous color harmony consists of three colors that are next to each other on the color wheel.



4293173702



4293894056



4293567630

# Triad

The Triadic color harmony groups three colors that are evenly spaced from another and form a triangle on the color wheel.



4293894056



4288397194



4286037228

# Complementary

The Complementary color scheme is a pair of colors which are on the opposite of each other on the color wheel.



4293894056



4288671718

# Split Complementary

Split-complementary colors differ from the complementary color scheme. The scheme consists of three colors, the original color and two neighbors of the complement color.



4284007132



4293894056



4286170275

# Square

The Square scheme is like the rectangle color scheme, but the four colors are evenly spaced on the color wheel.



4293894056



4290492283



4284270018



4288852973

# Rectangle

The Rectangle color scheme consists of four colors that form a rectangle on the color wheel.



4293894056



4292848257



4284270018



4285186024



# Sweetspot

The Sweet Spot groups the original color and five complimentary colors.



4293894056



4294960872



4293304303



4286607474



4278190080



4286611584



# Same Dimension

The Same Dimension uses a secret algorithm to generate beautiful new colors.



4293894056



4294941092



4293901983



4286082157



4290248725



4281860102



# Inverse Universe

The Inverse Universe completely reimagines the original color for something new.



4293894056



4294941092



4288663791



4286082157



4290248725



4281860102



# Previews

## White Background



This preview shows how the Android color 4293894056 looks on a white background.

## Color Contrast Check

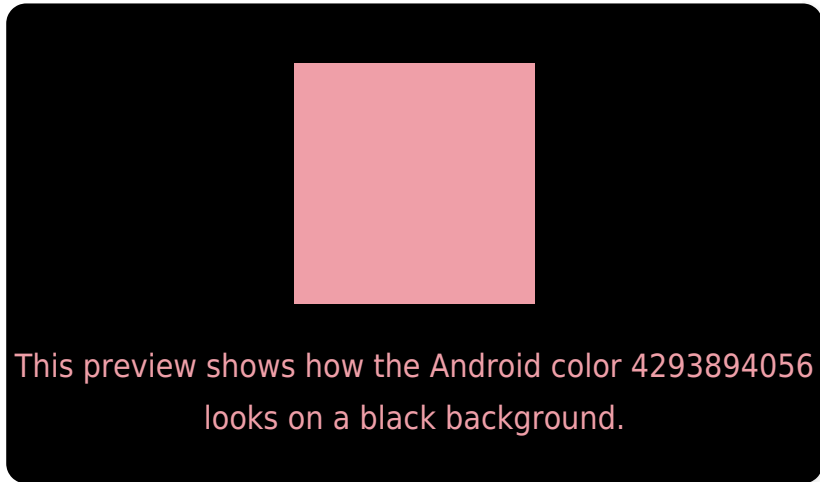
Large Text (above 18pt) WCAG AA × Fail

Any Text WCAG AA × Fail

Large Text (above 18pt) WCAG AAA × Fail

Any Text WCAG AAA × Fail

# Black Background



## Color Contrast Check

Large Text (above 18pt) WCAG AA ✓ Pass

Any Text WCAG AA ✓ Pass

Large Text (above 18pt) WCAG AAA ✓ Pass

Any Text WCAG AAA ✓ Pass

If you want to check with other color combinations, try the [Color Contrast Checker](#).



# Android 4293894056 Background



This preview shows how black text looks on a background with the Android color 4293894056.



This preview shows how white text looks on a background with the Android color 4293894056.

# Color Blindness Simulation

Color vision deficiency is a very complex topic, and I could not describe the different causes any better than Wikipedia does, so if you want to learn more, you should check out their [article about color blindness](#).


## Dichromacy



**Original Color**  
4293894056

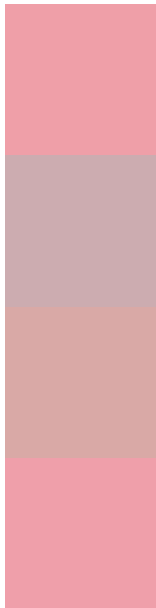
**Protanopia**  
4290294964

**Deuteranopia**  
4291604389



**Tritanopia**  
4293894059

# Trichromacy



**Original Color**  
4293894056

**Protanomaly**  
4291603632

**Deuteranomaly**  
4292454822

**Tritanomaly**  
4293894058

# Monochromacy



**Original Color**  
4293894056

**Achromatopsia**  
4290295992

**Achromatomaly**  
4291604402

# CSS Examples

## Text

The CSS property to change the color of the text to Android 4293894056 is called "color". The color property can be set on classes, ids or directly on the HTML element.

This example shows how text in the color `rgb(239, 159, 168)` looks like.

```
.text, #text, p{  
    color:rgb(239, 159, 168)  
}
```

If you want to add a text shadow in that color use the text-shadow property, you can generate a text shadow directly with our [CSS Text Shadow Generator](#).

Here you see how black text with a 4 pixel rgb(239, 159, 168) colored shadow looks like.

```
.shadow{ text-shadow: 4px 4px 2px rgb(239, 159, 168) }
```

## Border

The CSS property to change the border of an element to Android 4293894056 is called "border". The border property can be set on classes, ids or directly on the HTML element.

This example shows the color as border, it can be applied via the CSS property "border" or "border-color".

```
.border, #border, table{ border:4px solid rgb(239, 159, 168) }
```

If only the border color should be changed use the property `border-color`.

```
.border{ border-color:rgb(239, 159, 168) }
```

If you want to add a box shadow in that color use:

Here you see how a box with a 4 pixel `rgb(239, 159, 168)` colored shadow looks like.

```
.boxshadow{ -moz-box-shadow:4px 4px 4px  
4px rgb(239, 159, 168); -webkit-box-  
shadow:4px 4px 4px 4px rgb(239, 159, 168);  
box-shadow:4px 4px 4px 4px rgb(239, 159,  
168) }
```

# Background

The CSS property to change the background color of an element to Android 4293894056 is called "background". The background property can be set on classes, ids or directly on the HTML element.

```
.background, #background, body{  
background: rgb(239, 159, 168) }
```

If only the background color should be changed can be used:

```
.background{ background-color: rgb(239,  
159, 168) }
```

This example shows the color as background, it is applied via the CSS property "background".

To optimize and compress your CSS code, you can use our [online CSS compressor and optimizer](#) based on csstidy. If you want to create a linear or radial gradient as background or border, check our [CSS Gradient Generator](#).



Hey! You found this booklet interesting? Support Converting Colors with the new Membership Option!

The pro membership hides all ads, plus gives you double the colors in the color bucket, and more awesome pro features!

**[Learn more, Memberships starting at \\$2.50/m!](#)**

**Follow me  
on Twitter!**

@ConvertingColor