

Converting Colors

Android(4293931121)

Have a look what the booklet for
Android(4293931121) contains.

Android(4293931121)	3
<i>Conversions</i>	4
<i>Details</i>	6
<i>Harmonies</i>	11
<i>Previews</i>	23
<i>Color Blindness Simulation</i>	26
<i>CSS Examples</i>	29

Color

Android(4293931121)

Conversions

Conversions Part 1

Format	Color
Hex	F03071
RGB	240, 48, 113
RGB Percent	94%, 19%, 44%
CMY	0.0588, 0.8118, 0.5569
CMYK	0.00, 0.80, 0.53, 0.06
HSL	340°, 86%, 56%
HSV	340°, 80%, 94%
XYZ	39.9728, 21.8314, 17.7299
YIQ	112.8180, 93.5670, 60.9190

Conversions

Conversions Part 2

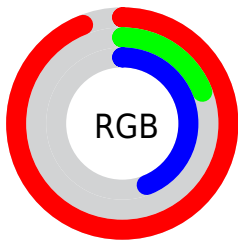
Format	Color
R_{YB}	240, 48, 113
Decimal	15741041
CIE _{Lab}	53.85, 73.54, 11.21
CIE _{LCh}	54, 74.392, 8.669
Yxy	21.8314, 0.5026, 0.2745
Android (android.graphics.Color)	4293931121 (0xFFFF03071)
YUV	112.8180, 0.0897, 111.5386
Hunter-Lab	46.7241, 70.9407, 10.2088

Details

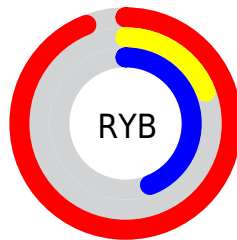
The Android color **4293931121** is a dark color, and the websafe version is hex **FF3366**. The color can be described as middle washed rose. A complement of this color would be **4281397423**, and the grayscale version is **4285624689**.

A 20% lighter version of the original color is **4294931108**, and **4289790018** is the 20% darker color. If you saturate the color by 10%, you get **4293924961**, and if you desaturate by 10%, it is **4293937281**.

Distribution



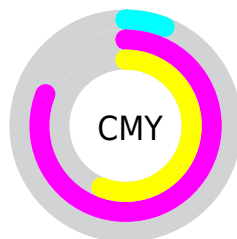
- Red (94%)
- Green (19%)
- Blue (44%)



- Red (94%)
- Yellow (19%)
- Blue (44%)



- Cyan (0%)
- Magenta (80%)
- Yellow (53%)
- Black (6%)



- Cyan (6%)
- Magenta (81%)
- Yellow (56%)

Brightness & Saturation Gradients

These gradients show how the Android color 4293931121 changes by changing the brightness by 10 percent. The first figure shows a shift by +10% for each color and the second figure -10%.

Similar to the brightness gradients but the following saturation gradients show a change of the Android color 4293931121 by changing the saturation by 10% instead.



4293931121



4293931121

4294967295



4291821657



4294931108



4289790018



4294938815



4287758380



4294946267



4285792280



4294953976



4283826179



4294961663



4281794562



4278845440



4278190080



4293931121



4293931121

 4293924961

 4293937281

 4293918801

 4293943441

 4293949601

 4293955761

 4293961920

 4293968080

 4293974240

 4293980400

 4293984255

Harmonies

Analogous

The Analogous color harmony consists of three colors that are next to each other on the color wheel.



4292493745



4293931121



4293151539

Triad

The Triadic color harmony groups three colors that are evenly spaced from another and form a triangle on the color wheel.



4293931121



4282552832



4278228217

Complementary

The Complementary color scheme is a pair of colors which are on the opposite of each other on the color wheel.



4293931121



4281397423

Split Complementary

Split-complementary colors differ from the complementary color scheme. The scheme consists of three colors, the original color and two neighbors of the complement color.



4278229968



4293931121



4278229583

Square

The Square scheme is like the rectangle color scheme, but the four colors are evenly spaced on the color wheel.



4293931121



4287333376



4278230418



4278223871

Rectangle

The Rectangle color scheme consists of four colors that form a rectangle on the color wheel.



4293931121



4291715584



4278230418



4278228974

Sweetspot

The Sweet Spot groups the original color and five complimentary colors.



4293931121



4294951639



4289540336



4286602087



4278190080



4286611584

Same Dimension

The Same Dimension uses a secret algorithm to generate beautiful new colors.



4293931121



4294904413



4293938480



4286082160



4290248766



4281860115

Inverse Universe

The Inverse Universe completely reimagines the original color for something new.



4293931121



4294904413



4281390064



4286082160



4290248766



4281860115

Previews

White Background



This preview shows how the Android color 4293931121 looks on a white background.

Color Contrast Check

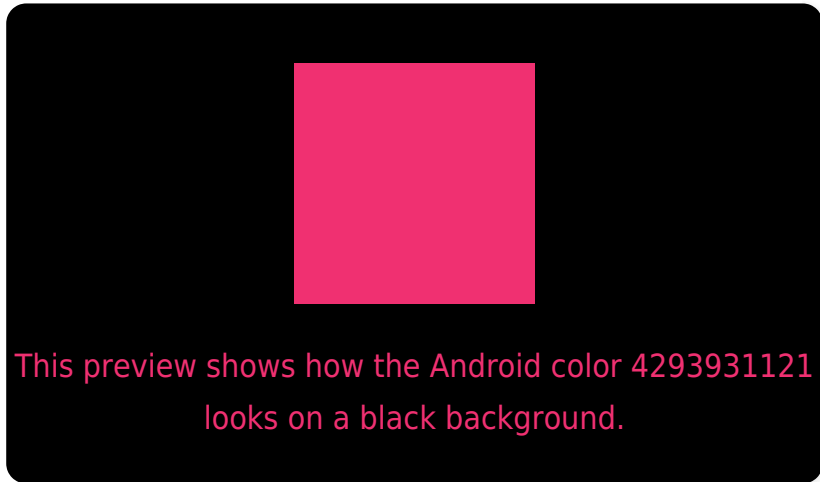
Large Text (above 18pt) WCAG AA ✓ Pass

Any Text WCAG AA ✗ Fail

Large Text (above 18pt) WCAG AAA ✗ Fail

Any Text WCAG AAA ✗ Fail

Black Background



Color Contrast Check

Large Text (above 18pt) WCAG AA ✓ Pass

Any Text WCAG AA ✓ Pass

Large Text (above 18pt) WCAG AAA ✓ Pass

Any Text WCAG AAA × Fail

If you want to check with other color combinations, try the [Color Contrast Checker](#).

Android 4293931121 Background



This preview shows how black text looks on a background with the Android color 4293931121.



This preview shows how white text looks on a background with the Android color 4293931121.

Color Blindness Simulation

Color vision deficiency is a very complex topic, and I could not describe the different causes any better than Wikipedia does, so if you want to learn more, you should check out their [article about color blindness](#).

Dichromacy

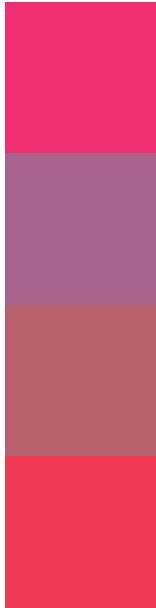


Original Color
4293931121

Protanopia
4286349466

Deuteranopia
4288052328

Trichromacy



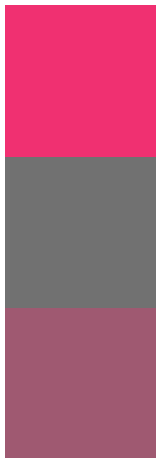
Original Color
4293931121

Protanomaly
4289094539

Deuteranomaly
4290207851

Tritanomaly
4293867601

Monochromacy



Original Color
4293931121

Achromatopsia
4285624689

Achromatomaly
4288633201

CSS Examples

Text

The CSS property to change the color of the text to Android 4293931121 is called "color". The color property can be set on classes, ids or directly on the HTML element.

This example shows how text in the color `rgb(240, 48, 113)` looks like.

```
.text, #text, p{  
    color:rgb(240, 48, 113)  
}
```

If you want to add a text shadow in that color use the text-shadow property, you can generate a text shadow directly with our [CSS Text Shadow Generator](#).

Here you see how black text with a 4 pixel rgb(240, 48, 113) colored shadow looks like.

```
.shadow{ text-shadow: 4px 4px 2px rgb(240, 48, 113) }
```

Border

The CSS property to change the border of an element to Android 4293931121 is called "border". The border property can be set on classes, ids or directly on the HTML element.

This example shows the color as border, it can be applied via the CSS property "border" or "border-color".

```
.border, #border, table{ border:4px solid rgb(240, 48, 113) }
```

If only the border color should be changed use the property `border-color`.

```
.border{ border-color:rgb(240, 48, 113) }
```

If you want to add a box shadow in that color use:

Here you see how a box with a 4 pixel `rgb(240, 48, 113)` colored shadow looks like.

```
.boxshadow{ -moz-box-shadow:4px 4px 4px  
4px rgb(240, 48, 113); -webkit-box-  
shadow:4px 4px 4px 4px rgb(240, 48, 113);  
box-shadow:4px 4px 4px 4px rgb(240, 48,  
113) }
```

Background

The CSS property to change the background color of an element to Android 4293931121 is called "background". The background property can be set on classes, ids or directly on the HTML element.

```
.background, #background, body{  
background: rgb(240, 48, 113) }
```

If only the background color should be changed can be used:

```
.background{ background-color: rgb(240, 48,  
113) }
```

This example shows the color as background, it is applied via the CSS property "background".

To optimize and compress your CSS code, you can use our [online CSS compressor and optimizer](#) based on csstidy. If you want to create a linear or radial gradient as background or border, check our [CSS Gradient Generator](#).

Hey! You found this booklet interesting? Support Converting Colors with the new Membership Option!

The pro membership hides all ads, plus gives you double the colors in the color bucket, and more awesome pro features!

[Learn more, Memberships starting at \\$2.50/m!](#)

**Follow me
on Twitter!**

@ConvertingColor