

Converting Colors

Android(4293935993)

Have a look what the booklet for
Android(4293935993) contains.

Android(4293935993)	3
<i>Conversions</i>	4
<i>Details</i>	6
<i>Harmonies</i>	11
<i>Previews</i>	23
<i>Color Blindness Simulation</i>	26
<i>CSS Examples</i>	29

Color

Android(4293935993)

Conversions

Conversions Part 1

Format	Color
Hex	F04379
RGB	240, 67, 121
RGB Percent	94%, 26%, 47%
CMY	0.0588, 0.7373, 0.5255
CMYK	0.00, 0.72, 0.50, 0.06
HSL	341°, 85%, 60%
HSV	341°, 72%, 94%
XYZ	41.3935, 23.9201, 20.5245
YIQ	124.8830, 85.7740, 53.4700

Conversions

Conversions Part 2

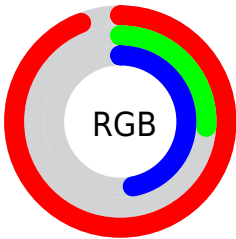
Format	Color
R_{YB}	240, 67, 121
Decimal	15745913
CIE _{Lab}	56.01, 68.62, 9.48
CIE _{LCh}	56, 69.269, 7.863
Yxy	23.9201, 0.4822, 0.2787
Android (android.graphics.Color)	4293935993 (0xFFFF04379)
YUV	124.8830, -1.9143, 100.9576
Hunter-Lab	48.9081, 65.4847, 9.3544

Details

The Android color **4293935993** is a dark color, and the websafe version is hex **CC3366**. The color can be described as middle washed rose. A complement of this color would be **4282642618**, and the grayscale version is **4286414205**.

A 20% lighter version of the original color is **4294934445**, and **4289855561** is the 20% darker color. If you saturate the color by 10%, you get **4293929832**, and if you desaturate by 10%, it is **4293942154**.

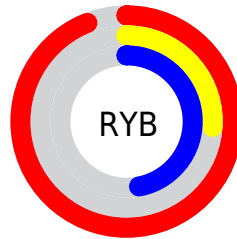
Distribution



Red (94%)

Green (26%)

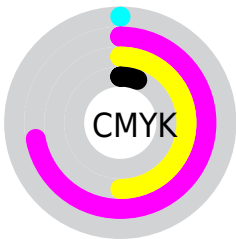
Blue (47%)



Red (94%)

Yellow (26%)

Blue (47%)

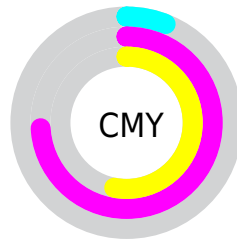


Cyan (0%)

Magenta (72%)

Yellow (50%)

Black (6%)



Cyan (6%)

Magenta (74%)

Yellow (53%)

Brightness & Saturation Gradients

These gradients show how the Android color 4293935993 changes by changing the brightness by 10 percent. The first figure shows a shift by +10% for each color and the second figure -10%.

Similar to the brightness gradients but the following saturation gradients show a change of the Android color 4293935993 by changing the saturation by 10% instead.

 4293935993

 4293935993

4294967295

 4291894624

 4294934445

 4289855561

 4294941896

 4287823923

 4294949604

 4285857822

 4294957055

 4283957252

 4294964735

 4281991170

 4279435264

 4278190080

 4293935993

 4293935993

 4293929832

 4293942154

 4293923672

 4293948314

 4293918795

 4293954475

 4293960635

 4293966796

 4293972956

 4293979117

 4293984253

 4293984255

Harmonies

Analogous

The Analogous color harmony consists of three colors that are next to each other on the color wheel.



4292432053



4293935993



4293285439

Triad

The Triadic color harmony groups three colors that are evenly spaced from another and form a triangle on the color wheel.



4293935993



4283537173



4278229494

Complementary

The Complementary color scheme is a pair of colors which are on the opposite of each other on the color wheel.



4293935993



4282642618

Split Complementary

Split-complementary colors differ from the complementary color scheme. The scheme consists of three colors, the original color and two neighbors of the complement color.



4278231247



4293935993



4278230614

Square

The Square scheme is like the rectangle color scheme, but the four colors are evenly spaced on the color wheel.



4293935993



4287858944



4278231445



4278225151

Rectangle

The Rectangle color scheme consists of four colors that form a rectangle on the color wheel.



4293935993



4291979544



4278231445



4278230252

Sweetspot

The Sweet Spot groups the original color and five complimentary colors.



4293935993



4294952920



4290331632



4286602857



4278190080



4286611584

Same Dimension

The Same Dimension uses a secret algorithm to generate beautiful new colors.



4293935993



4294910310



4293944131



4286082160



4290248761



4281860114

Inverse Universe

The Inverse Universe completely reimagines the original color for something new.



4293935993



4294910310



4282634480



4286082160



4290248761



4281860114

Previews

White Background



This preview shows how the Android color 4293935993 looks on a white background.

Color Contrast Check

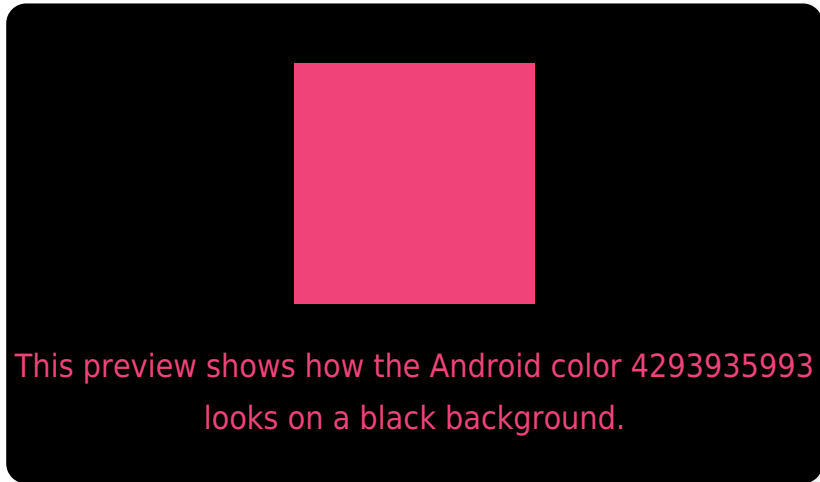
Large Text (above 18pt) WCAG AA ✓ Pass

Any Text WCAG AA ✗ Fail

Large Text (above 18pt) WCAG AAA ✗ Fail

Any Text WCAG AAA ✗ Fail

Black Background



Color Contrast Check

Large Text (above 18pt) WCAG AA ✓ Pass

Any Text WCAG AA ✓ Pass

Large Text (above 18pt) WCAG AAA ✓ Pass

Any Text WCAG AAA × Fail

If you want to check with other color combinations, try the [Color Contrast Checker](#).

Android 4293935993 Background



This preview shows how black text looks on a background with the Android color 4293935993.

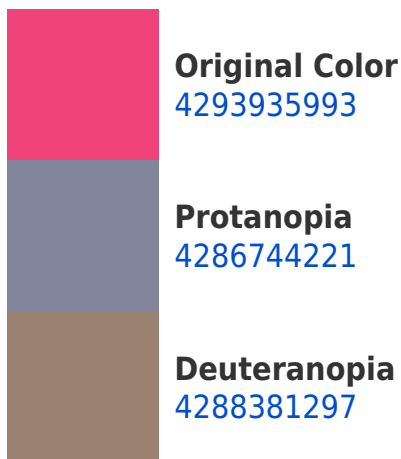


This preview shows how white text looks on a background with the Android color 4293935993.

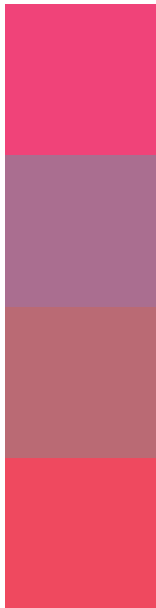
Color Blindness Simulation

Color vision deficiency is a very complex topic, and I could not describe the different causes any better than Wikipedia does, so if you want to learn more, you should check out their [article about color blindness](#).

Dichromacy



Trichromacy



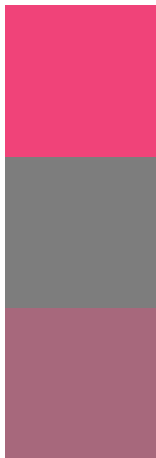
Original Color
4293935993

Protanomaly
4289359504

Deuteranomaly
4290407028

Tritanomaly
4293871967

Monochromacy



Original Color
4293935993

Achromatopsia
4286414205

Achromatomaly
4289161340

CSS Examples

Text

The CSS property to change the color of the text to Android 4293935993 is called "color". The color property can be set on classes, ids or directly on the HTML element.

This example shows how text in the color `rgb(240, 67, 121)` looks like.

```
.text, #text, p{  
  color:rgb(240, 67, 121)  
}
```

If you want to add a text shadow in that color use the text-shadow property, you can generate a text shadow directly with our [CSS Text Shadow Generator](#).

Here you see how black text with a 4 pixel rgb(240, 67, 121) colored shadow looks like.

```
.shadow{ text-shadow: 4px 4px 2px rgb(240, 67, 121) }
```

Border

The CSS property to change the border of an element to Android 4293935993 is called "border". The border property can be set on classes, ids or directly on the HTML element.

This example shows the color as border, it can be applied via the CSS property "border" or "border-color".

```
.border, #border, table{ border:4px solid rgb(240, 67, 121) }
```

If only the border color should be changed use the property `border-color`.

```
.border{ border-color:rgb(240, 67, 121) }
```

If you want to add a box shadow in that color use:

Here you see how a box with a 4 pixel `rgb(240, 67, 121)` colored shadow looks like.

```
.boxshadow{ -moz-box-shadow:4px 4px 4px  
4px rgb(240, 67, 121); -webkit-box-  
shadow:4px 4px 4px 4px rgb(240, 67, 121);  
box-shadow:4px 4px 4px 4px rgb(240, 67,  
121) }
```

Background

The CSS property to change the background color of an element to Android 4293935993 is called "background". The background property can be set on classes, ids or directly on the HTML element.

```
.background, #background, body{  
background: rgb(240, 67, 121) }
```

If only the background color should be changed can be used:

```
.background{ background-color: rgb(240, 67,  
121) }
```

This example shows the color as background, it is applied via the CSS property "background".

To optimize and compress your CSS code, you can use our [online CSS compressor and optimizer](#) based on csstidy. If you want to create a linear or radial gradient as background or border, check our [CSS Gradient Generator](#).

Hey! You found this booklet interesting? Support Converting Colors with the new Membership Option!

The pro membership hides all ads, plus gives you double the colors in the color bucket, and more awesome pro features!

[Learn more, Memberships starting at \\$2.50/m!](#)

**Follow me
on Twitter!**

@ConvertingColor