

# Converting Colors

Android(4293953943)

Have a look what the booklet for  
Android(4293953943) contains.

<b>Android(4293953943)</b> .....	3
<i><b>Conversions</b></i> .....	4
<i><b>Details</b></i> .....	6
<i><b>Harmonies</b></i> .....	11
<i><b>Previews</b></i> .....	23
<i><b>Color Blindness Simulation</b></i> .....	26
<i><b>CSS Examples</b></i> .....	29

# **Color**

**Android(4293953943)**

# Conversions

## Conversions Part 1

Format	Color
Hex	F08997
RGB	240, 137, 151
RGB Percent	94%, 54%, 59%
CMY	0.0588, 0.4627, 0.4078
CMYK	0.00, 0.43, 0.37, 0.06
HSL	352°, 77%, 74%
HSV	352°, 43%, 94%
XYZ	50.4668, 38.6510, 34.0786
YIQ	169.3930, 56.8940, 26.1900

# Conversions

## Conversions Part 2

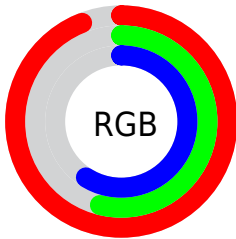
<b>Format</b>	<b>Color</b>
R <sub>Y</sub> B	240, 137, 151
Decimal	15763863
CIE Lab	68.50, 40.67, 9.89
CIE LCh	68, 41.852, 13.675
Yxy	38.6510, 0.4096, 0.3137
Android (android.graphics.Color)	4293953943 (0xFFFF08997)
YUV	169.3930, -9.0677, 61.9223
Hunter-Lab	62.1699, 36.1011, 11.0189

# Details

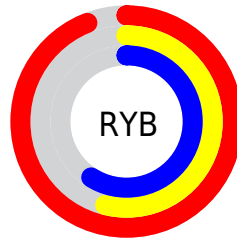
The Android color `4293953943` is a light color, and the websafe version is hex `FF9999`. A complement of this color would be `4287230178`, and the grayscale version is `4289309097`.

A 20% lighter version of the original color is `4294951117`, and `4290073956` is the 20% darker color. If you saturate the color by 10%, you get `4293947778`, and if you desaturate by 10%, it is `4293960108`.

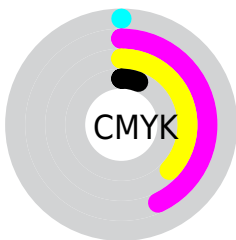
# Distribution



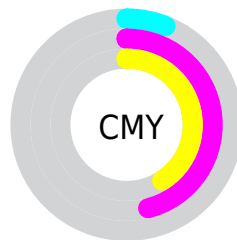
- Red (94%)
- Green (54%)
- Blue (59%)



- Red (94%)
- Yellow (54%)
- Blue (59%)



- Cyan (0%)
- Magenta (43%)
- Yellow (37%)
- Black (6%)



- Cyan (6%)
- Magenta (46%)
- Yellow (41%)

# Brightness & Saturation Gradients

These gradients show how the Android color 4293953943 changes by changing the brightness by 10 percent. The first figure shows a shift by +10% for each color and the second figure -10%.

Similar to the brightness gradients but the following saturation gradients show a change of the Android color 4293953943 by changing the saturation by 10% instead.





4293953943



4293953943

4294967295



4291980925



4294951117



4290073956



4294958313



4288166732



4294965759



4286325046



4284547105



4282777610



4281204738



4278190080



4293953943



4293953943

 4293947778

 4293960108

 4293941614

 4293966272

 4293935449

 4293972437

 4293929284

 4293978602

 4293923119

 4293984255

 4293918753

# Harmonies

## Analogous

The Analogous color harmony consists of three colors that are next to each other on the color wheel.



4293102525



4293953943



4293431669

# Triad

The Triadic color harmony groups three colors that are evenly spaced from another and form a triangle on the color wheel.



4293953943



4286887023



4282364399

# Complementary

The Complementary color scheme is a pair of colors which are on the opposite of each other on the color wheel.



4293953943



4287230178

# Split Complementary

Split-complementary colors differ from the complementary color scheme. The scheme consists of three colors, the original color and two neighbors of the complement color.



4278237402



4293953943



4283546001

# Square

The Square scheme is like the rectangle color scheme, but the four colors are evenly spaced on the color wheel.



4293953943



4289636956



4278238136



4287342064

# Rectangle

The Rectangle color scheme consists of four colors that form a rectangle on the color wheel.



4293953943



4292516196



4278238136



4279416042



# Sweetspot

The Sweet Spot groups the original color and five complimentary colors.



4293953943



4294958818



4292970992



4286606190



4278190080



4286611584



# Same Dimension

The Same Dimension uses a secret algorithm to generate beautiful new colors.



4293953943



4294933132



4293963145



4286082157



4290248729



4281860104



# Inverse Universe

The Inverse Universe completely reimagines the original color for something new.



4293953943



4294933132



4287220976



4286082157



4290248729



4281860104



# Previews

## White Background



This preview shows how the Android color 4293953943 looks on a white background.

## Color Contrast Check

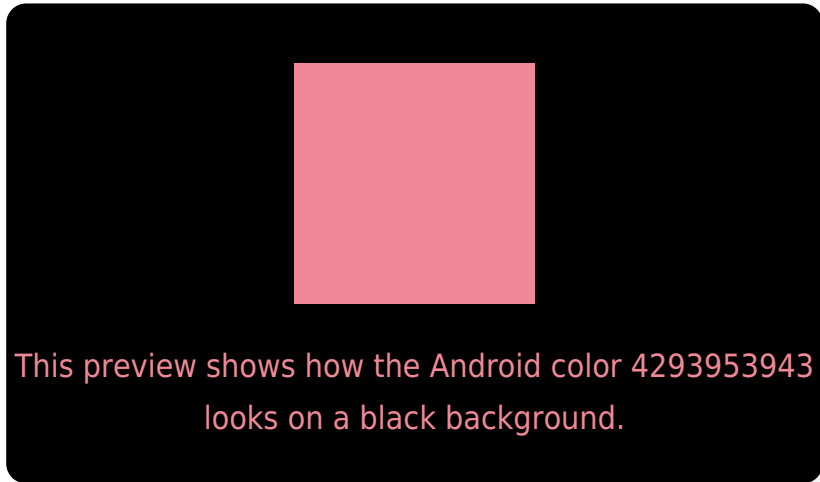
Large Text (above 18pt) WCAG AA × Fail

Any Text WCAG AA × Fail

Large Text (above 18pt) WCAG AAA × Fail

Any Text WCAG AAA × Fail

# Black Background



## Color Contrast Check

Large Text (above 18pt) WCAG AA ✓ Pass

Any Text WCAG AA ✓ Pass

Large Text (above 18pt) WCAG AAA ✓ Pass

Any Text WCAG AAA ✓ Pass

If you want to check with other color combinations, try the [Color Contrast Checker](#).



# Android 4293953943 Background



This preview shows how black text looks on a background with the Android color 4293953943.



This preview shows how white text looks on a background with the Android color 4293953943.

# Color Blindness Simulation

Color vision deficiency is a very complex topic, and I could not describe the different causes any better than Wikipedia does, so if you want to learn more, you should check out their [article about color blindness](#).


## Dichromacy



**Original Color**  
4293953943

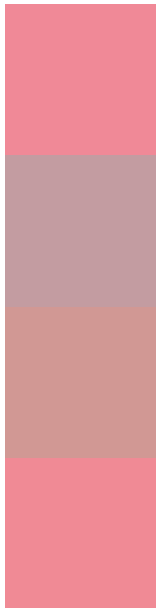
**Protanopia**  
4289374119

**Deuteranopia**  
4290748819



**Tritanopia**  
4293954196

# Trichromacy



**Original Color**  
4293953943

**Protanomaly**  
4291009697

**Deuteranomaly**  
4291926164

**Tritanomaly**  
4293954197

# Monochromacy



**Original Color**  
4293953943

**Achromatopsia**  
4289309097

**Achromatomaly**  
4291009954

# CSS Examples

## Text

The CSS property to change the color of the text to Android 4293953943 is called "color". The color property can be set on classes, ids or directly on the HTML element.

This example shows how text in the color `rgb(240, 137, 151)` looks like.

```
.text, #text, p{  
    color:rgb(240, 137, 151)  
}
```

If you want to add a text shadow in that color use the text-shadow property, you can generate a text shadow directly with our [CSS Text Shadow Generator](#).

Here you see how black text with a 4 pixel rgb(240, 137, 151) colored shadow looks like.

```
.shadow{ text-shadow: 4px 4px 2px rgb(240, 137, 151) }
```

## Border

The CSS property to change the border of an element to Android 4293953943 is called "border". The border property can be set on classes, ids or directly on the HTML element.

This example shows the color as border, it can be applied via the CSS property "border" or "border-color".

```
.border, #border, table{ border:4px solid rgb(240, 137, 151) }
```

If only the border color should be changed use the property `border-color`.

```
.border{ border-color:rgb(240, 137, 151) }
```

If you want to add a box shadow in that color use:

Here you see how a box with a 4 pixel `rgb(240, 137, 151)` colored shadow looks like.

```
.boxshadow{ -moz-box-shadow:4px 4px 4px  
4px rgb(240, 137, 151); -webkit-box-  
shadow:4px 4px 4px 4px rgb(240, 137, 151);  
box-shadow:4px 4px 4px 4px rgb(240, 137,  
151) }
```

# Background

The CSS property to change the background color of an element to Android 4293953943 is called "background". The background property can be set on classes, ids or directly on the HTML element.

```
.background, #background, body{  
background: rgb(240, 137, 151) }
```

If only the background color should be changed can be used:

```
.background{ background-color: rgb(240,  
137, 151) }
```

This example shows the color as background, it is applied via the CSS property "background".

To optimize and compress your CSS code, you can use our [online CSS compressor and optimizer](#) based on csstidy. If you want to create a linear or radial gradient as background or border, check our [CSS Gradient Generator](#).



Hey! You found this booklet interesting? Support Converting Colors with the new Membership Option!

The pro membership hides all ads, plus gives you double the colors in the color bucket, and more awesome pro features!

**[Learn more, Memberships starting at \\$2.50/m!](#)**

**Follow me  
on Twitter!**

@ConvertingColor