

Converting Colors

Android(4293956264)

Have a look what the booklet for
Android(4293956264) contains.

Android(4293956264)	3
<i>Conversions</i>	4
<i>Details</i>	6
<i>Harmonies</i>	11
<i>Previews</i>	23
<i>Color Blindness Simulation</i>	26
<i>CSS Examples</i>	29

Color

Android(4293956264)

Conversions

Conversions Part 1

Format	Color
Hex	F092A8
RGB	240, 146, 168
RGB Percent	94%, 57%, 66%
CMY	0.0588, 0.4275, 0.3412
CMYK	0.00, 0.39, 0.30, 0.06
HSL	346°, 76%, 76%
HSV	346°, 39%, 94%
XYZ	53.2819, 41.9102, 42.3270
YIQ	176.6140, 48.9620, 26.7700

Conversions

Conversions Part 2

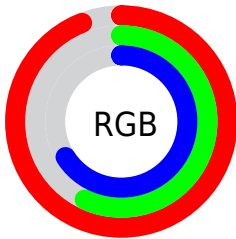
Format	Color
R_{YB}	240, 146, 168
Decimal	15766184
CIE _{Lab}	70.81, 38.10, 3.71
CIE _{LCh}	71, 38.275, 5.556
Yxy	41.9102, 0.3875, 0.3048
Android (android.graphics.Color)	4293956264 (0xFFFF092A8)
YUV	176.6140, -4.2467, 55.5895
Hunter-Lab	64.7381, 33.6208, 6.5517

Details

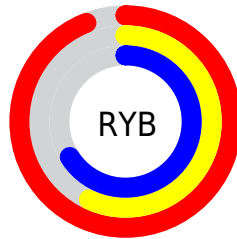
The Android color `4293956264` is a light color, and the websafe version is hex `FF9999`. A complement of this color would be `4287819994`, and the grayscale version is `4289835441`.

A 20% lighter version of the original color is `4294953439`, and `4290141812` is the 20% darker color. If you saturate the color by 10%, you get `4293950102`, and if you desaturate by 10%, it is `4293962426`.

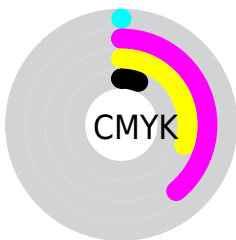
Distribution



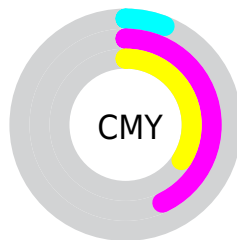
- Red (94%)
- Green (57%)
- Blue (66%)



- Red (94%)
- Yellow (57%)
- Blue (66%)



- Cyan (0%)
- Magenta (39%)
- Yellow (30%)
- Black (6%)



- Cyan (6%)
- Magenta (43%)
- Yellow (34%)

Brightness & Saturation Gradients

These gradients show how the Android color 4293956264 changes by changing the brightness by 10 percent. The first figure shows a shift by +10% for each color and the second figure -10%.

Similar to the brightness gradients but the following saturation gradients show a change of the Android color 4293956264 by changing the saturation by 10% instead.

 4293956264

 4293956264

4294967295

 4292048782

 4294953439

 4290141812

 4294960892

 4288300124

 4286458692

 4284682286

 4282908698

 4281466881

 4278190080

 4293956264

 4293956264

 4293950102

 4293962426

 4293943939

 4293968589

 4293937777

 4293974751

 4293931614

 4293980914

 4293925452

 4293984255

 4293919290

 4293918776

Harmonies

Analogous

The Analogous color harmony consists of three colors that are next to each other on the color wheel.



4292843467



4293956264



4293826438

Triad

The Triadic color harmony groups three colors that are evenly spaced from another and form a triangle on the color wheel.



4293956264



4288264051



4282890732

Complementary

The Complementary color scheme is a pair of colors which are on the opposite of each other on the color wheel.



4293956264



4287819994

Split Complementary

Split-complementary colors differ from the complementary color scheme. The scheme consists of three colors, the original color and two neighbors of the complement color.



4279353045



4293956264



4285447567

Square

The Square scheme is like the rectangle color scheme, but the four colors are evenly spaced on the color wheel.



4293956264



4290686311



4282237107



4286951410

Rectangle

The Rectangle color scheme consists of four colors that form a rectangle on the color wheel.



4293956264



4293172597



4282237107



4281514982

Sweetspot

The Sweet Spot groups the original color and five complimentary colors.



4293956264



4294959336



4292383472



4286606962



4278190080



4286611584

Same Dimension

The Same Dimension uses a secret algorithm to generate beautiful new colors.



4293956264



4294936483



4293962130



4286082159



4290248747



4281860109

Inverse Universe

The Inverse Universe completely reimagines the original color for something new.



4293956264



4294936483



4287813872



4286082159



4290248747



4281860109

Previews

White Background



This preview shows how the Android color 4293956264 looks on a white background.

Color Contrast Check

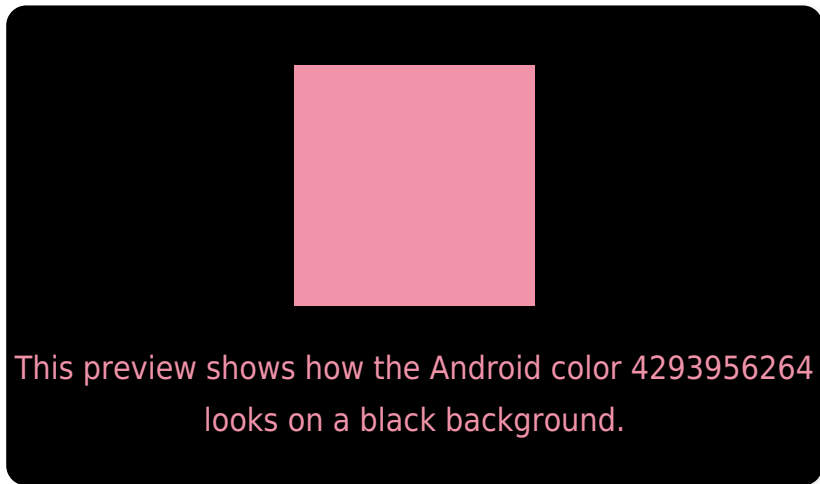
Large Text (above 18pt) WCAG AA × Fail

Any Text WCAG AA × Fail

Large Text (above 18pt) WCAG AAA × Fail

Any Text WCAG AAA × Fail

Black Background



Color Contrast Check

Large Text (above 18pt) WCAG AA ✓ Pass

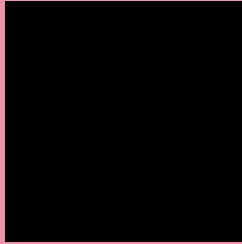
Any Text WCAG AA ✓ Pass

Large Text (above 18pt) WCAG AAA ✓ Pass

Any Text WCAG AAA ✓ Pass

If you want to check with other color combinations, try the [Color Contrast Checker](#).

Android 4293956264 Background



This preview shows how black text looks on a background with the Android color 4293956264.



This preview shows how white text looks on a background with the Android color 4293956264.

Color Blindness Simulation

Color vision deficiency is a very complex topic, and I could not describe the different causes any better than Wikipedia does, so if you want to learn more, you should check out their [article about color blindness](#).


Dichromacy



Original Color
4293956264

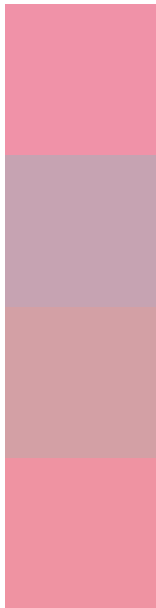
Protanopia
4289637815

Deuteranopia
4290947236



Tritanopia
4293891231

Trichromacy



Original Color
4293956264

Protanomaly
4291208114

Deuteranomaly
4292059301

Tritanomaly
4293890978

Monochromacy



Original Color
4293956264

Achromatopsia
4289835441

Achromatomaly
4291339950

CSS Examples

Text

The CSS property to change the color of the text to Android 4293956264 is called "color". The color property can be set on classes, ids or directly on the HTML element.

This example shows how text in the color `rgb(240, 146, 168)` looks like.

```
.text, #text, p{  
    color:rgb(240, 146, 168)  
}
```

If you want to add a text shadow in that color use the text-shadow property, you can generate a text shadow directly with our [CSS Text Shadow Generator](#).

Here you see how black text with a 4 pixel rgb(240, 146, 168) colored shadow looks like.

```
.shadow{ text-shadow: 4px 4px 2px rgb(240, 146, 168) }
```

Border

The CSS property to change the border of an element to Android 4293956264 is called "border". The border property can be set on classes, ids or directly on the HTML element.

This example shows the color as border, it can be applied via the CSS property "border" or "border-color".

```
.border, #border, table{ border:4px solid rgb(240, 146, 168) }
```

If only the border color should be changed use the property border-color.

```
.border{ border-color:rgb(240, 146, 168) }
```

If you want to add a box shadow in that color use:

Here you see how a box with a 4 pixel rgb(240, 146, 168) colored shadow looks like.

```
.boxshadow{ -moz-box-shadow:4px 4px 4px  
4px rgb(240, 146, 168); -webkit-box-  
shadow:4px 4px 4px 4px rgb(240, 146, 168);  
box-shadow:4px 4px 4px 4px rgb(240, 146,  
168) }
```

Background

The CSS property to change the background color of an element to Android 4293956264 is called "background". The background property can be set on classes, ids or directly on the HTML element.

```
.background, #background, body{  
background: rgb(240, 146, 168) }
```

If only the background color should be changed can be used:

```
.background{ background-color: rgb(240,  
146, 168) }
```

This example shows the color as background, it is applied via the CSS property "background".

To optimize and compress your CSS code, you can use our [online CSS compressor and optimizer](#) based on csstidy. If you want to create a linear or radial gradient as background or border, check our [CSS Gradient Generator](#).

Hey! You found this booklet interesting? Support Converting Colors with the new Membership Option!

The pro membership hides all ads, plus gives you double the colors in the color bucket, and more awesome pro features!

[Learn more, Memberships starting at \\$2.50/m!](#)

**Follow me
on Twitter!**

@ConvertingColor