

# Converting Colors

Android(4293958063)

Have a look what the booklet for  
Android(4293958063) contains.

<b>Android(4293958063)</b> .....	3
<i><b>Conversions</b></i> .....	4
<i><b>Details</b></i> .....	6
<i><b>Harmonies</b></i> .....	11
<i><b>Previews</b></i> .....	23
<i><b>Color Blindness Simulation</b></i> .....	26
<i><b>CSS Examples</b></i> .....	29

# **Color**

**Android(4293958063)**

# Conversions

## Conversions Part 1

Format	Color
Hex	F099AF
RGB	240, 153, 175
RGB Percent	94%, 60%, 69%
CMY	0.0588, 0.4000, 0.3137
CMYK	0.00, 0.36, 0.27, 0.06
HSL	345°, 74%, 77%
HSV	345°, 36%, 94%
XYZ	55.0643, 44.4029, 46.2258
YIQ	181.5210, 44.7900, 25.2860

# Conversions

## Conversions Part 2

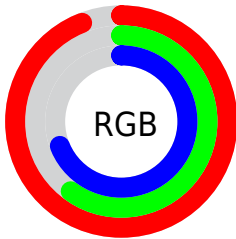
<b>Format</b>	<b>Color</b>
<b>R<sub>YB</sub></b>	240, 153, 175
Decimal	15767983
CIE Lab	72.50, 35.37, 2.27
CIE LCh	72, 35.439, 3.665
Yxy	44.4029, 0.3779, 0.3048
Android (android.graphics.Color)	4293958063 (0xFFFF099AF)
YUV	181.5210, -3.2149, 51.2861
Hunter-Lab	66.6355, 30.8915, 5.5146

# Details

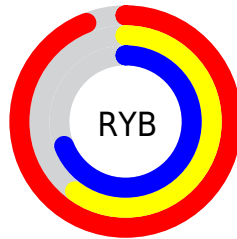
The Android color `4293958063` is a light color, and the websafe version is hex `FF9999`. A complement of this color would be `4288278746`, and the grayscale version is `4290164406`.

A 20% lighter version of the original color is `4294955238`, and `4290143355` is the 20% darker color. If you saturate the color by 10%, you get `4293951901`, and if you desaturate by 10%, it is `4293964225`.

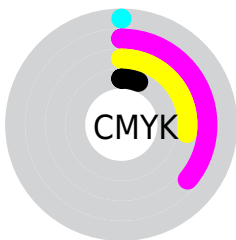
# Distribution



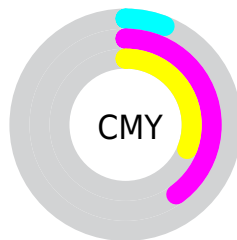
- Red (94%)
- Green (60%)
- Blue (69%)



- Red (94%)
- Yellow (60%)
- Blue (69%)



- Cyan (0%)
- Magenta (36%)
- Yellow (27%)
- Black (6%)



- Cyan (6%)
- Magenta (40%)
- Yellow (31%)

# Brightness & Saturation Gradients

These gradients show how the Android color 4293958063 changes by changing the brightness by 10 percent. The first figure shows a shift by +10% for each color and the second figure -10%.

Similar to the brightness gradients but the following saturation gradients show a change of the Android color 4293958063 by changing the saturation by 10% instead.



 4293958063

 4293958063

4294967295

 4292050580

 4294955238

 4290143355


 4294962687

 4288301922

 4286526282

 4284750132

 4283039775

 4281532421

 4278714368

 4278190080

 4293958063

 4293958063

 4293951901

 4293964225

 4293945739

 4293970387

 4293939577

 4293976549

 4293933415

 4293982711

 4293927253

 4293984255

 4293921091

 4293918781

# Harmonies

## Analogous

The Analogous color harmony consists of three colors that are next to each other on the color wheel.



4292779727



4293958063



4293959055

# Triad

The Triadic color harmony groups three colors that are evenly spaced from another and form a triangle on the color wheel.



4293958063



4288789371



4284005867

# Complementary

The Complementary color scheme is a pair of colors which are on the opposite of each other on the color wheel.



4293958063



4288278746

# Split Complementary

Split-complementary colors differ from the complementary color scheme. The scheme consists of three colors, the original color and two neighbors of the complement color.



4282172117



4293958063



4286300564

# Square

The Square scheme is like the rectangle color scheme, but the four colors are evenly spaced on the color wheel.



4293958063



4291080561



4283679669



4287345906

# Rectangle

The Rectangle color scheme consists of four colors that form a rectangle on the color wheel.



4293958063



4293304959



4283679669



4283088869



# Sweetspot

The Sweet Spot groups the original color and five complimentary colors.



4293958063



4294960106



4292450800



4286607219



4278190080



4286611584



# Same Dimension

The Same Dimension uses a secret algorithm to generate beautiful new colors.



4293958063



4294938539



4293963161



4286082159



4290248750



4281860110



# Inverse Universe

The Inverse Universe completely reimagines the original color for something new.



4293958063



4294938539



4288273648



4286082159



4290248750



4281860110



# Previews

## White Background



This preview shows how the Android color 4293958063 looks on a white background.

## Color Contrast Check

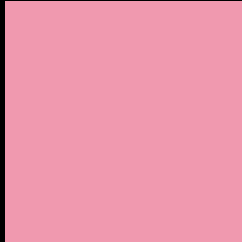
Large Text (above 18pt) WCAG AA × Fail

Any Text WCAG AA × Fail

Large Text (above 18pt) WCAG AAA × Fail

Any Text WCAG AAA × Fail

# Black Background



This preview shows how the Android color 4293958063 looks on a black background.

## Color Contrast Check

Large Text (above 18pt) WCAG AA ✓ Pass

Any Text WCAG AA ✓ Pass

Large Text (above 18pt) WCAG AAA ✓ Pass

Any Text WCAG AAA ✓ Pass

If you want to check with other color combinations, try the [Color Contrast Checker](#).



# Android 4293958063 Background



This preview shows how black text looks on a background with the Android color 4293958063.




This preview shows how white text looks on a background with the Android color 4293958063.

# Color Blindness Simulation

Color vision deficiency is a very complex topic, and I could not describe the different causes any better than Wikipedia does, so if you want to learn more, you should check out their [article about color blindness](#).

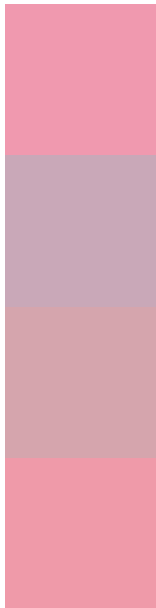
## Dichromacy





**Tritanopia**  
4293892774

# Trichromacy



**Original Color**  
4293958063

**Protanomaly**  
4291406008

**Deuteranomaly**  
4292191661

**Tritanomaly**  
4293892777

# Monochromacy



**Original Color**  
4293958063

**Achromatopsia**  
4290164406

**Achromatomaly**  
4291537843

# CSS Examples

## Text

The CSS property to change the color of the text to Android 4293958063 is called "color". The color property can be set on classes, ids or directly on the HTML element.

This example shows how text in the color `rgb(240, 153, 175)` looks like.

```
.text, #text, p{  
    color:rgb(240, 153, 175)  
}
```

If you want to add a text shadow in that color use the text-shadow property, you can generate a text shadow directly with our [CSS Text Shadow Generator](#).

Here you see how black text with a 4 pixel rgb(240, 153, 175) colored shadow looks like.

```
.shadow{ text-shadow: 4px 4px 2px rgb(240, 153, 175) }
```

## Border

The CSS property to change the border of an element to Android 4293958063 is called "border". The border property can be set on classes, ids or directly on the HTML element.

This example shows the color as border, it can be applied via the CSS property "border" or "border-color".

```
.border, #border, table{ border:4px solid rgb(240, 153, 175) }
```

If only the border color should be changed use the property `border-color`.

```
.border{ border-color:rgb(240, 153, 175) }
```

If you want to add a box shadow in that color use:

Here you see how a box with a 4 pixel `rgb(240, 153, 175)` colored shadow looks like.

```
.boxshadow{ -moz-box-shadow:4px 4px 4px  
4px rgb(240, 153, 175); -webkit-box-  
shadow:4px 4px 4px 4px rgb(240, 153, 175);  
box-shadow:4px 4px 4px 4px rgb(240, 153,  
175) }
```

# Background

The CSS property to change the background color of an element to Android 4293958063 is called "background". The background property can be set on classes, ids or directly on the HTML element.

```
.background, #background, body{  
background: rgb(240, 153, 175) }
```

If only the background color should be changed can be used:

```
.background{ background-color: rgb(240,  
153, 175) }
```

This example shows the color as background, it is applied via the CSS property "background".

To optimize and compress your CSS code, you can use our [online CSS compressor and optimizer](#) based on csstidy. If you want to create a linear or radial gradient as background or border, check our [CSS Gradient Generator](#).



Hey! You found this booklet interesting? Support Converting Colors with the new Membership Option!

The pro membership hides all ads, plus gives you double the colors in the color bucket, and more awesome pro features!

**[Learn more, Memberships starting at \\$2.50/m!](#)**

**Follow me  
on Twitter!**

@ConvertingColor