

Converting Colors

Android(4293960632)

Have a look what the booklet for
Android(4293960632) contains.

Android(4293960632)	3
<i>Conversions</i>	4
<i>Details</i>	6
<i>Harmonies</i>	11
<i>Previews</i>	23
<i>Color Blindness Simulation</i>	26
<i>CSS Examples</i>	29

Color

Android(4293960632)

Conversions

Conversions Part 1

Format	Color
Hex	F0A3B8
RGB	240, 163, 184
RGB Percent	94%, 64%, 72%
CMY	0.0588, 0.3608, 0.2784
CMYK	0.00, 0.32, 0.23, 0.06
HSL	344°, 72%, 79%
HSV	344°, 32%, 94%
XYZ	57.6841, 48.1803, 51.6069
YIQ	188.4170, 39.1510, 22.8550

Conversions

Conversions Part 2

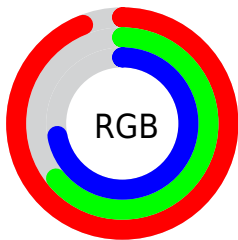
Format	Color
R _Y B	240, 163, 184
Decimal	15770552
CIE Lab	74.94, 31.35, 0.85
CIE LCh	75, 31.362, 1.562
Yxy	48.1803, 0.3663, 0.3060
Android (android.graphics.Color)	4293960632 (0xFFFF0A3B8)
YUV	188.4170, -2.1776, 45.2383
Hunter-Lab	69.4121, 26.8693, 4.5072

Details

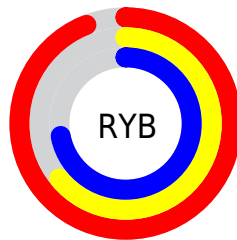
The Android color `4293960632` is a light color, and the websafe version is hex `CC9999`. A complement of this color would be `4288934107`, and the grayscale version is `4290559164`.

A 20% lighter version of the original color is `4294958064`, and `4290211459` is the 20% darker color. If you saturate the color by 10%, you get `4293954471`, and if you desaturate by 10%, it is `4293966793`.

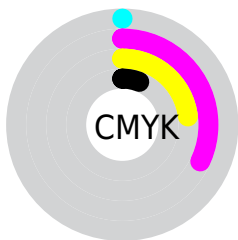
Distribution



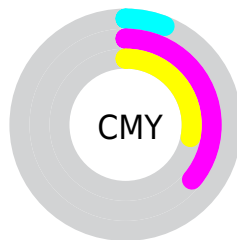
- Red (94%)
- Green (64%)
- Blue (72%)



- Red (94%)
- Yellow (64%)
- Blue (72%)



- Cyan (0%)
- Magenta (32%)
- Yellow (23%)
- Black (6%)



- Cyan (6%)
- Magenta (36%)
- Yellow (28%)

Brightness & Saturation Gradients

These gradients show how the Android color 4293960632 changes by changing the brightness by 10 percent. The first figure shows a shift by +10% for each color and the second figure -10%.

Similar to the brightness gradients but the following saturation gradients show a change of the Android color 4293960632 by changing the saturation by 10% instead.

 4293960632

 4293960632

4294967295

 4292053149

 4294958064

 4290211459


 4294965247

 4288370026

 4286594386

 4284818747

 4283108133

 4281532432

 4279566336

 4278190080

 4293960632

 4293960632

 4293954471

 4293966793

 4293948309

 4293972955

 4293942148

 4293979116

 4293935986

 4293984254

 4293929825

 4293984255

 4293923663

 4293918785

Harmonies

Analogous

The Analogous color harmony consists of three colors that are next to each other on the color wheel.



4292847572



4293960632



4294026652

Triad

The Triadic color harmony groups three colors that are evenly spaced from another and form a triangle on the color wheel.



4293960632



4289577095



4285449194

Complementary

The Complementary color scheme is a pair of colors which are on the opposite of each other on the color wheel.



4293960632



4288934107

Split Complementary

Split-complementary colors differ from the complementary color scheme. The scheme consists of three colors, the original color and two neighbors of the complement color.



4284270550



4293960632



4287350428

Square

The Square scheme is like the rectangle color scheme, but the four colors are evenly spaced on the color wheel.



4293960632



4291540863



4285319353



4288003058

Rectangle

The Rectangle color scheme consists of four colors that form a rectangle on the color wheel.



4293960632



4293569164



4285319353



4284794341

Sweetspot

The Sweet Spot groups the original color and five complimentary colors.



4293960632



4294960876



4292518896



4286607476



4278190080



4286611584

Same Dimension

The Same Dimension uses a secret algorithm to generate beautiful new colors.



4293960632



4294941879



4293964963



4286082159



4290248754



4281860111

Inverse Universe

The Inverse Universe completely reimagines the original color for something new.



4293960632



4294941879



4288929776



4286082159



4290248754



4281860111

Previews

White Background



This preview shows how the Android color 4293960632 looks on a white background.

Color Contrast Check

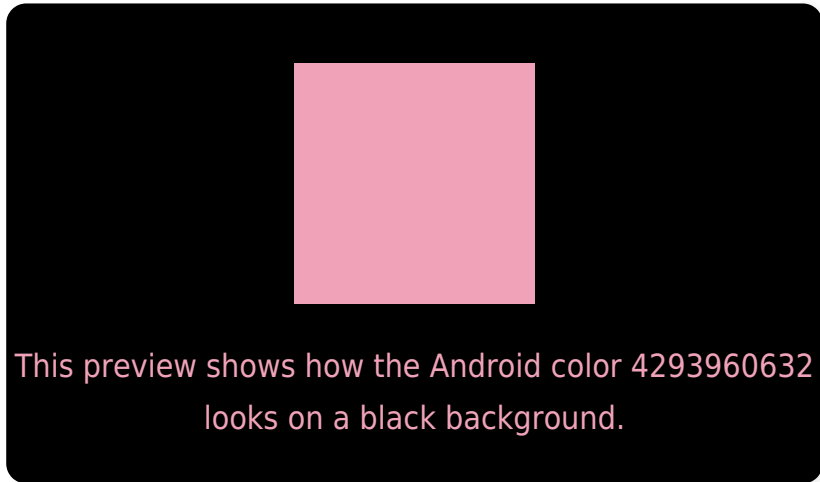
Large Text (above 18pt) WCAG AA × Fail

Any Text WCAG AA × Fail

Large Text (above 18pt) WCAG AAA × Fail

Any Text WCAG AAA × Fail

Black Background



Color Contrast Check

Large Text (above 18pt) WCAG AA ✓ Pass

Any Text WCAG AA ✓ Pass

Large Text (above 18pt) WCAG AAA ✓ Pass

Any Text WCAG AAA ✓ Pass

If you want to check with other color combinations, try the [Color Contrast Checker](#).

Android 4293960632 Background



This preview shows how black text looks on a background with the Android color 4293960632.



This preview shows how white text looks on a background with the Android color 4293960632.

Color Blindness Simulation

Color vision deficiency is a very complex topic, and I could not describe the different causes any better than Wikipedia does, so if you want to learn more, you should check out their [article about color blindness](#).


Dichromacy



Original Color
4293960632

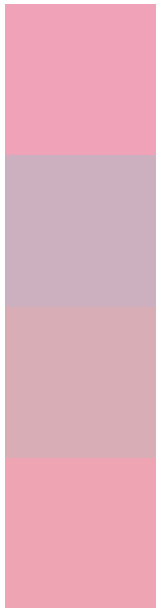
Protanopia
4290361540

Deuteranopia
4291605429



Tritanopia
4293895345

Trichromacy



Original Color
4293960632

Protanomaly
4291670208

Deuteranomaly
4292455862

Tritanomaly
4293895348

Monochromacy



Original Color
4293960632

Achromatopsia
4290559164

Achromatomaly
4291802043

CSS Examples

Text

The CSS property to change the color of the text to Android 4293960632 is called "color". The color property can be set on classes, ids or directly on the HTML element.

This example shows how text in the color `rgb(240, 163, 184)` looks like.

```
.text, #text, p{  
    color:rgb(240, 163, 184)  
}
```

If you want to add a text shadow in that color use the text-shadow property, you can generate a text shadow directly with our [CSS Text Shadow Generator](#).

Here you see how black text with a 4 pixel rgb(240, 163, 184) colored shadow looks like.

```
.shadow{ text-shadow: 4px 4px 2px rgb(240, 163, 184) }
```

Border

The CSS property to change the border of an element to Android 4293960632 is called "border". The border property can be set on classes, ids or directly on the HTML element.

This example shows the color as border, it can be applied via the CSS property "border" or "border-color".

```
.border, #border, table{ border:4px solid rgb(240, 163, 184) }
```

If only the border color should be changed use the property `border-color`.

```
.border{ border-color:rgb(240, 163, 184) }
```

If you want to add a box shadow in that color use:

Here you see how a box with a 4 pixel `rgb(240, 163, 184)` colored shadow looks like.

```
.boxshadow{ -moz-box-shadow:4px 4px 4px 4px rgb(240, 163, 184); -webkit-box-shadow:4px 4px 4px 4px rgb(240, 163, 184); box-shadow:4px 4px 4px 4px rgb(240, 163, 184) }
```

Background

The CSS property to change the background color of an element to Android 4293960632 is called "background". The background property can be set on classes, ids or directly on the HTML element.

```
.background, #background, body{  
background: rgb(240, 163, 184) }
```

If only the background color should be changed can be used:

```
.background{ background-color: rgb(240,  
163, 184) }
```

This example shows the color as background, it is applied via the CSS property "background".

To optimize and compress your CSS code, you can use our [online CSS compressor and optimizer](#) based on csstidy. If you want to create a linear or radial gradient as background or border, check our [CSS Gradient Generator](#).

Hey! You found this booklet interesting? Support Converting Colors with the new Membership Option!

The pro membership hides all ads, plus gives you double the colors in the color bucket, and more awesome pro features!

[Learn more, Memberships starting at \\$2.50/m!](#)

**Follow me
on Twitter!**

@ConvertingColor