

Converting Colors

Android(4293966831)

Have a look what the booklet for
Android(4293966831) contains.

Android(4293966831)	3
<i>Conversions</i>	4
<i>Details</i>	6
<i>Harmonies</i>	11
<i>Previews</i>	23
<i>Color Blindness Simulation</i>	26
<i>CSS Examples</i>	29

Color

Android(4293966831)

Conversions

Conversions Part 1

Format	Color
Hex	F0BBEF
RGB	240, 187, 239
RGB Percent	94%, 73%, 94%
CMY	0.0588, 0.2667, 0.0627
CMYK	0.00, 0.22, 0.00, 0.06
HSL	301°, 64%, 84%
HSV	301°, 22%, 94%
XYZ	69.2855, 60.2979, 89.6483
YIQ	208.7750, 14.8960, 27.4080

Conversions

Conversions Part 2

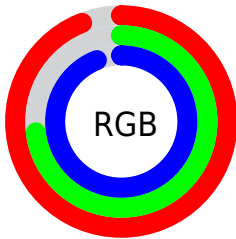
Format	Color
R_{YB}	240, 187, 239
Decimal	15776751
CIE _{Lab}	82.00, 27.58, -18.49
CIE _{LCh}	82, 33.202, 326.165
Yxy	60.2979, 0.3160, 0.2750
Android (android.graphics.Color)	4293966831 (0xFFFF0BBEF)
YUV	208.7750, 14.9009, 27.3843
Hunter-Lab	77.6517, 23.3778, -14.0936

Details

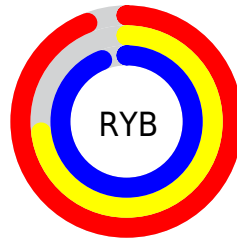
The Android color `4293966831` is a light color, and the websafe version is hex `FFCCFF`. A complement of this color would be `4290506940`, and the grayscale version is `4291940817`.

A 20% lighter version of the original color is `4294964479`, and `4290217399` is the 20% darker color. If you saturate the color by 10%, you get `4293960687`, and if you desaturate by 10%, it is `4293972975`.

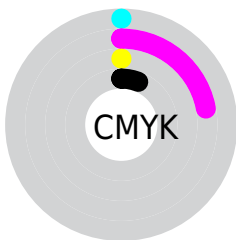
Distribution



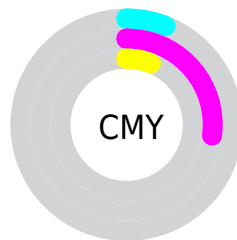
- Red (94%)
- Green (73%)
- Blue (94%)



- Red (94%)
- Yellow (73%)
- Blue (94%)



- Cyan (0%)
- Magenta (22%)
- Yellow (0%)
- Black (6%)



- Cyan (6%)
- Magenta (27%)
- Yellow (6%)

Brightness & Saturation Gradients

These gradients show how the Android color 4293966831 changes by changing the brightness by 10 percent. The first figure shows a shift by +10% for each color and the second figure -10%.

Similar to the brightness gradients but the following saturation gradients show a change of the Android color 4293966831 by changing the saturation by 10% instead.



4293966831



4293966831

4294967295



4292059347



4294964479



4290217399



4288441500



4286731138



4285021033



4283376720



4281797945



4280483876



4278190091

 4293966831

 4293966831

 4293960687

 4293972975

 4293954542

 4293979120

 4293948398

 4293984240

 4293942253

 4293984241

 4293936109

 4293984242

 4293929964

 4293984243

 4293923820

 4293918955

Harmonies

Analogous

The Analogous color harmony consists of three colors that are next to each other on the color wheel.



4291544575



4293966831



4294948305

Triad

The Triadic color harmony groups three colors that are evenly spaced from another and form a triangle on the color wheel.



4293966831



4293314958



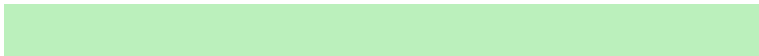
4285193702

Complementary

The Complementary color scheme is a pair of colors which are on the opposite of each other on the color wheel.



4293966831



4290506940

Split Complementary

Split-complementary colors differ from the complementary color scheme. The scheme consists of three colors, the original color and two neighbors of the complement color.



4286569927



4293966831



4291154579

Square

The Square scheme is like the rectangle color scheme, but the four colors are evenly spaced on the color wheel.



4293966831



4294885017



4288797096



4285978879

Rectangle

The Rectangle color scheme consists of four colors that form a rectangle on the color wheel.



4293966831



4294948284



4288797096



4285455836

Sweetspot

The Sweet Spot groups the original color and five complimentary colors.



4293966831



4294962687



4290558960



4286608767



4278190080



4286611584

Same Dimension

The Same Dimension uses a secret algorithm to generate beautiful new colors.



4293966831



4294949630



4293966805



4286082168



4290248884



4281860151

Inverse Universe

The Inverse Universe completely reimagines the original color for something new.



4293966831



4294949630



4290506966



4286082168



4290248884



4281860151

Previews

White Background



This preview shows how the Android color 4293966831 looks on a white background.

Color Contrast Check

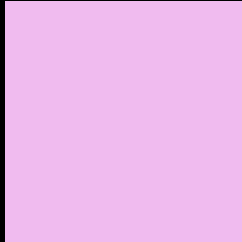
Large Text (above 18pt) WCAG AA × Fail

Any Text WCAG AA × Fail

Large Text (above 18pt) WCAG AAA × Fail

Any Text WCAG AAA × Fail

Black Background



This preview shows how the Android color 4293966831 looks on a black background.

Color Contrast Check

Large Text (above 18pt) WCAG AA ✓ Pass

Any Text WCAG AA ✓ Pass

Large Text (above 18pt) WCAG AAA ✓ Pass

Any Text WCAG AAA ✓ Pass

If you want to check with other color combinations, try the [Color Contrast Checker](#).

Android 4293966831 Background



This preview shows how black text looks on a background with the Android color 4293966831.




This preview shows how white text looks on a background with the Android color 4293966831.

Color Blindness Simulation

Color vision deficiency is a very complex topic, and I could not describe the different causes any better than Wikipedia does, so if you want to learn more, you should check out their [article about color blindness](#).

Dichromacy





Tritanopia
4293706192

Trichromacy



Original Color
4293966831



Protanomaly
4292068853



Deuteranomaly
4292658158

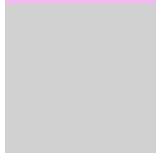


Tritanomaly
4293771227

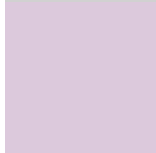
Monochromacy



Original Color
4293966831



Achromatopsia
4291940817



Achromatomaly
4292659676

CSS Examples

Text

The CSS property to change the color of the text to Android 4293966831 is called "color". The color property can be set on classes, ids or directly on the HTML element.

This example shows how text in the color `rgb(240, 187, 239)` looks like.

```
.text, #text, p{  
    color:rgb(240, 187, 239)  
}
```

If you want to add a text shadow in that color use the text-shadow property, you can generate a text shadow directly with our [CSS Text Shadow Generator](#).

Here you see how black text with a 4 pixel rgb(240, 187, 239) colored shadow looks like.

```
.shadow{ text-shadow: 4px 4px 2px rgb(240, 187, 239) }
```

Border

The CSS property to change the border of an element to Android 4293966831 is called "border". The border property can be set on classes, ids or directly on the HTML element.

This example shows the color as border, it can be applied via the CSS property "border" or "border-color".

```
.border, #border, table{ border:4px solid rgb(240, 187, 239) }
```

If only the border color should be changed use the property `border-color`.

```
.border{ border-color:rgb(240, 187, 239) }
```

If you want to add a box shadow in that color use:

Here you see how a box with a 4 pixel `rgb(240, 187, 239)` colored shadow looks like.

```
.boxshadow{ -moz-box-shadow:4px 4px 4px  
4px rgb(240, 187, 239); -webkit-box-  
shadow:4px 4px 4px 4px rgb(240, 187, 239);  
box-shadow:4px 4px 4px 4px rgb(240, 187,  
239) }
```

Background

The CSS property to change the background color of an element to Android 4293966831 is called "background". The background property can be set on classes, ids or directly on the HTML element.

```
.background, #background, body{  
background: rgb(240, 187, 239) }
```

If only the background color should be changed can be used:

```
.background{ background-color: rgb(240,  
187, 239) }
```

This example shows the color as background, it is applied via the CSS property "background".

To optimize and compress your CSS code, you can use our [online CSS compressor and optimizer](#) based on csstidy. If you want to create a linear or radial gradient as background or border, check our [CSS Gradient Generator](#).

Hey! You found this booklet interesting? Support Converting Colors with the new Membership Option!

The pro membership hides all ads, plus gives you double the colors in the color bucket, and more awesome pro features!

[Learn more, Memberships starting at \\$2.50/m!](#)

**Follow me
on Twitter!**

@ConvertingColor