

# Converting Colors

Android(4293968552)

Have a look what the booklet for  
Android(4293968552) contains.

<b>Android(4293968552)</b> .....	3
<b><i>Conversions</i></b> .....	4
<b><i>Details</i></b> .....	6
<b><i>Harmonies</i></b> .....	11
<b><i>Previews</i></b> .....	23
<b><i>Color Blindness Simulation</i></b> .....	26
<b><i>CSS Examples</i></b> .....	29

# **Color**

**Android(4293968552)**

# Conversions

## Conversions Part 1

Format	Color
Hex	F0C2A8
RGB	240, 194, 168
RGB Percent	94%, 76%, 66%
CMY	0.0588, 0.2392, 0.3412
CMYK	0.00, 0.19, 0.30, 0.06
HSL	22°, 71%, 80%
HSV	22°, 30%, 94%
XYZ	62.2948, 59.9360, 45.3313
YIQ	204.7900, 35.7620, 1.6660

# Conversions

## Conversions Part 2

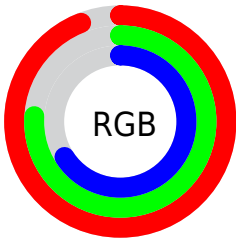
<b>Format</b>	<b>Color</b>
<b>R<sub>YB</sub></b>	240, 209, 168
Decimal	15778472
CIE <sub>Lab</sub>	81.80, 12.75, 19.29
CIE <sub>LCh</sub>	82, 23.121, 56.528
Yxy	59.9360, 0.3718, 0.3577
Android (android.graphics.Color)	4293968552 (0xFFFF0C2A8)
YUV	204.7900, -18.1375, 30.8792
Hunter-Lab	77.4183, 8.1484, 19.4764

# Details

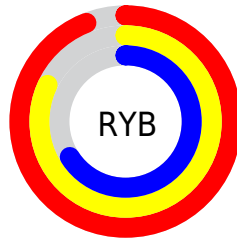
The Android color `4293968552` is a light color, and the websafe version is hex `FFCC99`. A complement of this color would be `4289255152`, and the grayscale version is `4291677645`.

A 20% lighter version of the original color is `4294966239`, and `4290219124` is the 20% darker color. If you saturate the color by 10%, you get `4293964688`, and if you desaturate by 10%, it is `4293972416`.

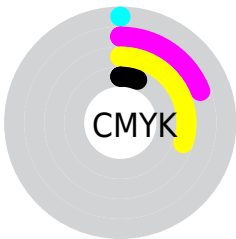
# Distribution



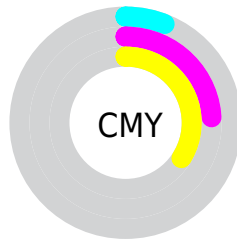
- Red (94%)
- Green (76%)
- Blue (66%)



- Red (94%)
- Yellow (82%)
- Blue (66%)



- Cyan (0%)
- Magenta (19%)
- Yellow (30%)
- Black (6%)



- Cyan (6%)
- Magenta (24%)
- Yellow (34%)

# Brightness & Saturation Gradients

These gradients show how the Android color 4293968552 changes by changing the brightness by 10 percent. The first figure shows a shift by +10% for each color and the second figure -10%.

Similar to the brightness gradients but the following saturation gradients show a change of the Android color 4293968552 by changing the saturation by 10% instead.





4293968552



4293968552

4294967295



4292061070



4294966239



4290219124

4294967292



4288377691



4286601796



4284891949



4283247640



4281669376



4280156160



4278190080

 4293968552

 4293968552

 4293964688

 4293972416

 4293960568

 4293976536

 4293956704

 4293980400

 4293952840

 4293984255

 4293948720

 4293944856

 4293940992

# Harmonies

## Analogous

The Analogous color harmony consists of three colors that are next to each other on the color wheel.



4294491577



4293968552



4292790688

# Triad

The Triadic color harmony groups three colors that are evenly spaced from another and form a triangle on the color wheel.



4293968552



4288272584



4291610610

# Complementary

The Complementary color scheme is a pair of colors which are on the opposite of each other on the color wheel.



4293968552



4289255152

# Split Complementary

Split-complementary colors differ from the complementary color scheme. The scheme consists of three colors, the original color and two neighbors of the complement color.



4289711862



4293968552



4287682526

# Square

The Square scheme is like the rectangle color scheme, but the four colors are evenly spaced on the color wheel.



4293968552



4289648051



4288206063



4293247204

# Rectangle

The Rectangle color scheme consists of four colors that form a rectangle on the color wheel.



4293968552



4291808930



4288206063



4290955765

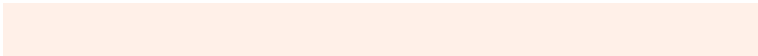


# Sweetspot

The Sweet Spot groups the original color and five complimentary colors.



4293968552



4294963432



4293961943



4286609265



4278190080



4286611584



# Same Dimension

The Same Dimension uses a secret algorithm to generate beautiful new colors.



4293968552



4294952099



4293977512



4286083180



4290265600



4281865216

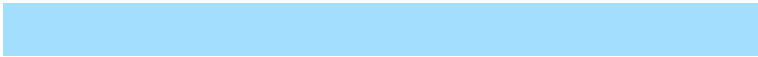


# Inverse Universe

The Inverse Universe completely reimagines the original color for something new.



4289255152



4288929535



4289246192



4285297784



4278220216



4278199352



# Previews

## White Background



This preview shows how the Android color 4293968552 looks on a white background.

## Color Contrast Check

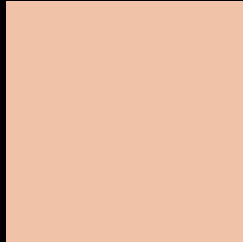
Large Text (above 18pt) WCAG AA × Fail

Any Text WCAG AA × Fail

Large Text (above 18pt) WCAG AAA × Fail

Any Text WCAG AAA × Fail

# Black Background



This preview shows how the Android color 4293968552 looks on a black background.

## Color Contrast Check

Large Text (above 18pt) WCAG AA ✓ Pass

Any Text WCAG AA ✓ Pass

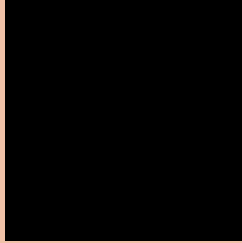
Large Text (above 18pt) WCAG AAA ✓ Pass

Any Text WCAG AAA ✓ Pass

If you want to check with other color combinations, try the [Color Contrast Checker](#).



# Android 4293968552 Background



This preview shows how black text looks on a background with the Android color 4293968552.



This preview shows how white text looks on a background with the Android color 4293968552.

# Color Blindness Simulation

Color vision deficiency is a very complex topic, and I could not describe the different causes any better than Wikipedia does, so if you want to learn more, you should check out their [article about color blindness](#).

## Dichromacy





**Tritanopia**  
4294229452

# Trichromacy



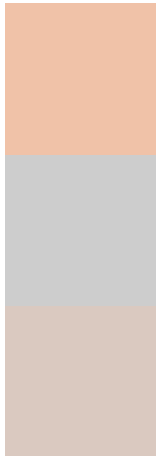
**Original Color**  
4293968552

**Protanomaly**  
4292855979

**Deuteranomaly**  
4293772200

**Tritanomaly**  
4294164415

# Monochromacy



**Original Color**  
4293968552

**Achromatopsia**  
4291677645

**Achromatomaly**  
4292528576

# CSS Examples

## Text

The CSS property to change the color of the text to Android 4293968552 is called "color". The color property can be set on classes, ids or directly on the HTML element.

This example shows how text in the color `rgb(240, 194, 168)` looks like.

```
.text, #text, p{  
    color:rgb(240, 194, 168)  
}
```

If you want to add a text shadow in that color use the text-shadow property, you can generate a text shadow directly with our [CSS Text Shadow Generator](#).

Here you see how black text with a 4 pixel rgb(240, 194, 168) colored shadow looks like.

```
.shadow{ text-shadow: 4px 4px 2px rgb(240, 194, 168) }
```

## Border

The CSS property to change the border of an element to Android 4293968552 is called "border". The border property can be set on classes, ids or directly on the HTML element.

This example shows the color as border, it can be applied via the CSS property "border" or "border-color".

```
.border, #border, table{ border:4px solid rgb(240, 194, 168) }
```

If only the border color should be changed use the property `border-color`.

```
.border{ border-color:rgb(240, 194, 168) }
```

If you want to add a box shadow in that color use:

Here you see how a box with a 4 pixel `rgb(240, 194, 168)` colored shadow looks like.

```
.boxshadow{ -moz-box-shadow:4px 4px 4px  
4px rgb(240, 194, 168); -webkit-box-  
shadow:4px 4px 4px 4px rgb(240, 194, 168);  
box-shadow:4px 4px 4px 4px rgb(240, 194,  
168) }
```

# Background

The CSS property to change the background color of an element to Android 4293968552 is called "background". The background property can be set on classes, ids or directly on the HTML element.

```
.background, #background, body{  
background: rgb(240, 194, 168) }
```

If only the background color should be changed can be used:

```
.background{ background-color: rgb(240,  
194, 168) }
```

This example shows the color as background, it is applied via the CSS property "background".

To optimize and compress your CSS code, you can use our [online CSS compressor and optimizer](#) based on csstidy. If you want to create a linear or radial gradient as background or border, check our [CSS Gradient Generator](#).



Hey! You found this booklet interesting? Support Converting Colors with the new Membership Option!

The pro membership hides all ads, plus gives you double the colors in the color bucket, and more awesome pro features!

**[Learn more, Memberships starting at \\$2.50/m!](#)**

**Follow me  
on Twitter!**

@ConvertingColor