

Converting Colors

Android(4294002811)

Have a look what the booklet for
Android(4294002811) contains.

Android(4294002811)	3
<i>Conversions</i>	4
<i>Details</i>	6
<i>Harmonies</i>	11
<i>Previews</i>	23
<i>Color Blindness Simulation</i>	26
<i>CSS Examples</i>	29

Color

Android(4294002811)

Conversions

Conversions Part 1

Format	Color
Hex	F1487B
RGB	241, 72, 123
RGB Percent	95%, 28%, 48%
CMY	0.0549, 0.7176, 0.5176
CMYK	0.00, 0.70, 0.49, 0.05
HSL	342°, 86%, 61%
HSV	342°, 70%, 95%
XYZ	42.1681, 24.7656, 21.2966
YIQ	128.3450, 84.3530, 51.6890

Conversions

Conversions Part 2

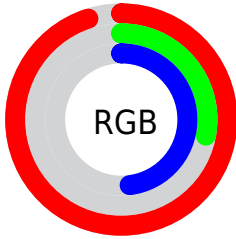
Format	Color
R_{YB}	241, 72, 123
Decimal	15812731
CIE _{Lab}	56.85, 67.35, 9.50
CIE _{LCh}	57, 68.020, 8.030
Yxy	24.7656, 0.4779, 0.2807
Android (android.graphics.Color)	4294002811 (0xFFFF1487B)
YUV	128.3450, -2.6351, 98.7984
Hunter-Lab	49.7650, 64.1624, 9.4627

Details

The Android color **4294002811** is a dark color, and the websafe version is hex **FF6699**. The color can be described as middle washed rose. A complement of this color would be **4282970558**, and the grayscale version is **4286611584**.

A 20% lighter version of the original color is **4294935471**, and **4289921099** is the 20% darker color. If you saturate the color by 10%, you get **4293996650**, and if you desaturate by 10%, it is **4294008972**.

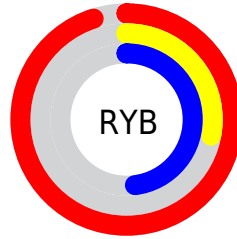
Distribution



Red (95%)

Green (28%)

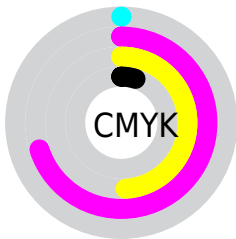
Blue (48%)



Red (95%)

Yellow (28%)

Blue (48%)

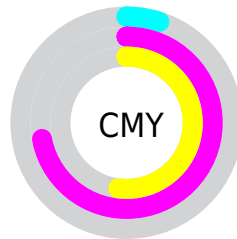


Cyan (0%)

Magenta (70%)

Yellow (49%)

Black (5%)



Cyan (5%)

Magenta (72%)

Yellow (52%)

Brightness & Saturation Gradients

These gradients show how the Android color 4294002811 changes by changing the brightness by 10 percent. The first figure shows a shift by +10% for each color and the second figure -10%.

Similar to the brightness gradients but the following saturation gradients show a change of the Android color 4294002811 by changing the saturation by 10% instead.



4294002811



4294002811

4294967295



4291962210



4294935471



4289921099



4294942923



4287954996



4294950375



4285923360



4294958079



4284022791



4294965759



4282122243



4279697408



4278190080



4294002811



4294002811

 4293996650

 4294008972

 4293990489

 4294015133

 4293984329

 4294021293

 4294027454

 4294033871

 4294040032

 4294046193

 4294049791

Harmonies

Analogous

The Analogous color harmony consists of three colors that are next to each other on the color wheel.



4292564150



4294002811



4293417538

Triad

The Triadic color harmony groups three colors that are evenly spaced from another and form a triangle on the color wheel.



4294002811



4283799836



4278230007

Complementary

The Complementary color scheme is a pair of colors which are on the opposite of each other on the color wheel.



4294002811



4282970558

Split Complementary

Split-complementary colors differ from the complementary color scheme. The scheme consists of three colors, the original color and two neighbors of the complement color.



4278231760



4294002811



4278231129

Square

The Square scheme is like the rectangle color scheme, but the four colors are evenly spaced on the color wheel.



4294002811



4287990528



4278231959



4278225663

Rectangle

The Rectangle color scheme consists of four colors that form a rectangle on the color wheel.



4294002811



4292045854



4278231959



4278230765

Sweetspot

The Sweet Spot groups the original color and five complimentary colors.



4294002811



4294953434



4290463985



4286603369



4278190080



4286611584

Same Dimension

The Same Dimension uses a secret algorithm to generate beautiful new colors.



4294002811



4294912361



4294010696



4286082159



4290248759



4281860113

Inverse Universe

The Inverse Universe completely reimagines the original color for something new.



4294002811



4294912361



4282962673



4286082159



4290248759



4281860113

Previews

White Background



This preview shows how the Android color 4294002811 looks on a white background.

Color Contrast Check

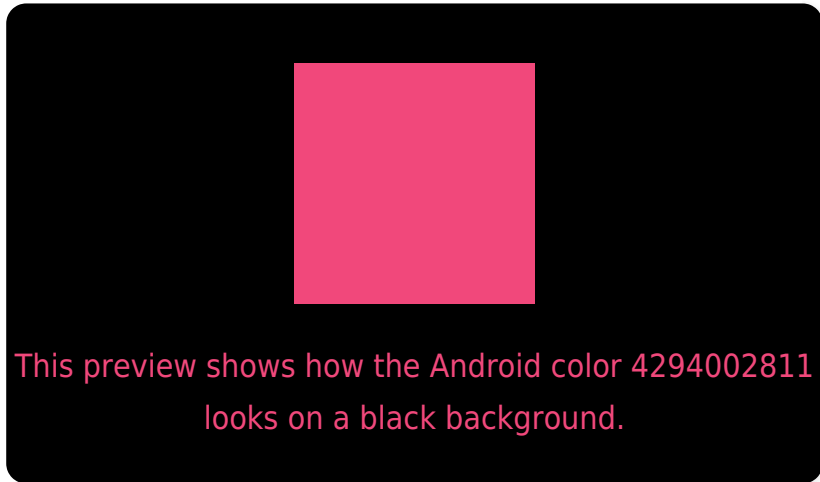
Large Text (above 18pt) WCAG AA ✓ Pass

Any Text WCAG AA × Fail

Large Text (above 18pt) WCAG AAA × Fail

Any Text WCAG AAA × Fail

Black Background



Color Contrast Check

Large Text (above 18pt) WCAG AA ✓ Pass

Any Text WCAG AA ✓ Pass

Large Text (above 18pt) WCAG AAA ✓ Pass

Any Text WCAG AAA × Fail

If you want to check with other color combinations, try the [Color Contrast Checker](#).

Android 4294002811 Background



This preview shows how black text looks on a background with the Android color 4294002811.



This preview shows how white text looks on a background with the Android color 4294002811.

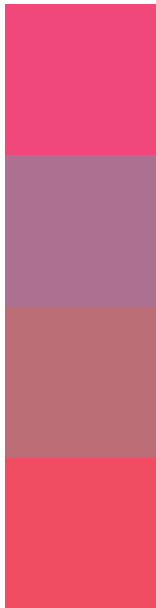
Color Blindness Simulation

Color vision deficiency is a very complex topic, and I could not describe the different causes any better than Wikipedia does, so if you want to learn more, you should check out their [article about color blindness](#).

Dichromacy



Trichromacy



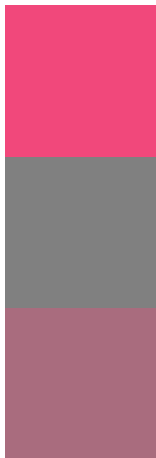
Original Color
4294002811

Protanomaly
4289491345

Deuteranomaly
4290539126

Tritanomaly
4293938531

Monochromacy



Original Color
4294002811

Achromatopsia
4286611584

Achromatomaly
4289293438

CSS Examples

Text

The CSS property to change the color of the text to Android 4294002811 is called "color". The color property can be set on classes, ids or directly on the HTML element.

This example shows how text in the color `rgb(241, 72, 123)` looks like.

```
.text, #text, p{  
    color:rgb(241, 72, 123)  
}
```

If you want to add a text shadow in that color use the text-shadow property, you can generate a text shadow directly with our [CSS Text Shadow Generator](#).

Here you see how black text with a 4 pixel rgb(241, 72, 123) colored shadow looks like.

```
.shadow{ text-shadow: 4px 4px 2px rgb(241, 72, 123) }
```

Border

The CSS property to change the border of an element to Android 4294002811 is called "border". The border property can be set on classes, ids or directly on the HTML element.

This example shows the color as border, it can be applied via the CSS property "border" or "border-color".

```
.border, #border, table{ border:4px solid rgb(241, 72, 123) }
```

If only the border color should be changed use the property border-color.

```
.border{ border-color:rgb(241, 72, 123) }
```

If you want to add a box shadow in that color use:

Here you see how a box with a 4 pixel rgb(241, 72, 123) colored shadow looks like.

```
.boxshadow{ -moz-box-shadow:4px 4px 4px  
4px rgb(241, 72, 123); -webkit-box-  
shadow:4px 4px 4px 4px rgb(241, 72, 123);  
box-shadow:4px 4px 4px 4px rgb(241, 72,  
123) }
```

Background

The CSS property to change the background color of an element to Android 4294002811 is called "background". The background property can be set on classes, ids or directly on the HTML element.

```
.background, #background, body{  
background: rgb(241, 72, 123) }
```

If only the background color should be changed can be used:

```
.background{ background-color: rgb(241, 72,  
123) }
```

This example shows the color as background, it is applied via the CSS property "background".

To optimize and compress your CSS code, you can use our [online CSS compressor and optimizer](#) based on csstidy. If you want to create a linear or radial gradient as background or border, check our [CSS Gradient Generator](#).

Hey! You found this booklet interesting? Support Converting Colors with the new Membership Option!

The pro membership hides all ads, plus gives you double the colors in the color bucket, and more awesome pro features!

[Learn more, Memberships starting at \\$2.50/m!](#)

**Follow me
on Twitter!**

@ConvertingColor