

Converting Colors

Android(4294006148)

Have a look what the booklet for
Android(4294006148) contains.

Android(4294006148)	3
<i>Conversions</i>	4
<i>Details</i>	6
<i>Harmonies</i>	11
<i>Previews</i>	23
<i>Color Blindness Simulation</i>	26
<i>CSS Examples</i>	29

Color

Android(4294006148)

Conversions

Conversions Part 1

Format	Color
Hex	F15584
RGB	241, 85, 132
RGB Percent	95%, 33%, 52%
CMY	0.0549, 0.6667, 0.4824
CMYK	0.00, 0.65, 0.45, 0.05
HSL	342°, 85%, 64%
HSV	342°, 65%, 95%
XYZ	43.6890, 26.8637, 24.7123
YIQ	137.0020, 77.8890, 47.6890

Conversions

Conversions Part 2

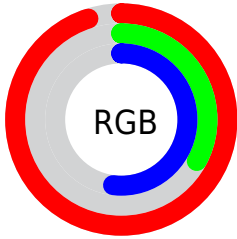
Format	Color
R_{YB}	241, 85, 132
Decimal	15816068
CIE _{Lab}	58.85, 63.26, 7.05
CIE _{LCh}	59, 63.647, 6.361
Yxy	26.8637, 0.4586, 0.2820
Android (android.graphics.Color)	4294006148 (0xFFFF15584)
YUV	137.0020, -2.4660, 91.2062
Hunter-Lab	51.8302, 59.7592, 8.0120

Details

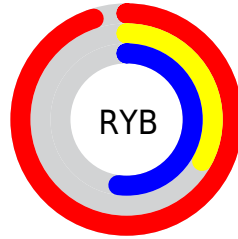
The Android color **4294006148** is a light color, and the websafe version is hex **FF6699**. The color can be described as light muted rose. A complement of this color would be **4283822530**, and the grayscale version is **4287203721**.

A 20% lighter version of the original color is **4294938297**, and **4289989715** is the 20% darker color. If you saturate the color by 10%, you get **4293999987**, and if you desaturate by 10%, it is **4294012309**.

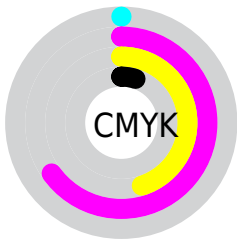
Distribution



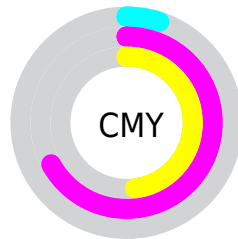
- Red (95%)
- Green (33%)
- Blue (52%)



- Red (95%)
- Yellow (33%)
- Blue (52%)



- Cyan (0%)
- Magenta (65%)
- Yellow (45%)
- Black (5%)



- Cyan (5%)
- Magenta (67%)
- Yellow (48%)

Brightness & Saturation Gradients

These gradients show how the Android color 4294006148 changes by changing the brightness by 10 percent. The first figure shows a shift by +10% for each color and the second figure -10%.

Similar to the brightness gradients but the following saturation gradients show a change of the Android color 4294006148 by changing the saturation by 10% instead.

 4294006148

 4294006148

4294967295

 4291966571

 4294938297

 4289989715

 4294945748

 4288020540

 4294953201

 4286054439

 4294960639

 4284153874

 4282384387

 4280090625

 4278190080

 4294006148

 4294006148

 4293999987

 4294012309

 4293993826

 4294018470

 4293987665

 4294024631

 4293984329

 4294030791

 4294036952

 4294043369

 4294049530

 4294049791

Harmonies

Analogous

The Analogous color harmony consists of three colors that are next to each other on the color wheel.



4292501691



4294006148



4293550670

Triad

The Triadic color harmony groups three colors that are evenly spaced from another and form a triangle on the color wheel.



4294006148



4284718378



4278231028

Complementary

The Complementary color scheme is a pair of colors which are on the opposite of each other on the color wheel.



4294006148



4283822530

Split Complementary

Split-complementary colors differ from the complementary color scheme. The scheme consists of three colors, the original color and two neighbors of the complement color.



4278232783



4294006148



4278232414

Square

The Square scheme is like the rectangle color scheme, but the four colors are evenly spaced on the color wheel.



4294006148



4288581376



4278233240



4278227197

Rectangle

The Rectangle color scheme consists of four colors that form a rectangle on the color wheel.



4294006148



4292375087



4278233240



4278231786

Sweetspot

The Sweet Spot groups the original color and five complimentary colors.



4294006148



4294954973



4290794993



4286603883



4278190080



4286611584

Same Dimension

The Same Dimension uses a secret algorithm to generate beautiful new colors.



4294006148



4294916212



4294013525



4286082159



4290248759



4281860113

Inverse Universe

The Inverse Universe completely reimagines the original color for something new.



4294006148



4294916212



4283815153



4286082159



4290248759



4281860113

Previews

White Background



This preview shows how the Android color 4294006148 looks on a white background.

Color Contrast Check

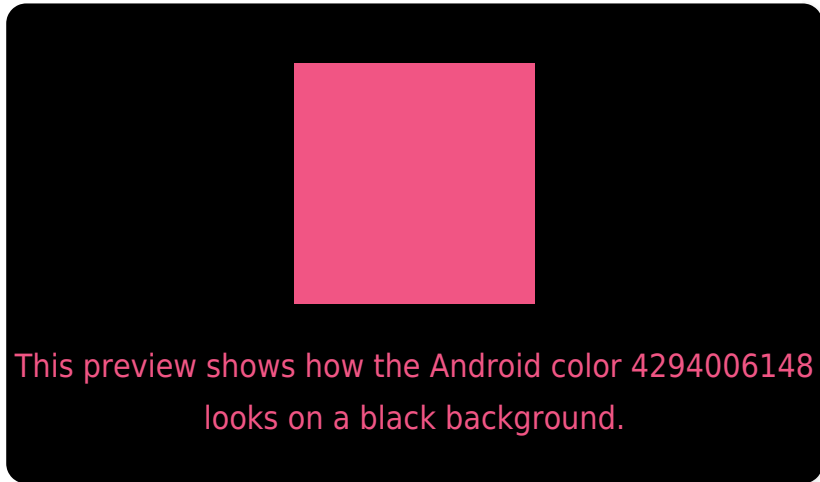
Large Text (above 18pt) WCAG AA ✓ Pass

Any Text WCAG AA ✗ Fail

Large Text (above 18pt) WCAG AAA ✗ Fail

Any Text WCAG AAA ✗ Fail

Black Background



Color Contrast Check

Large Text (above 18pt) WCAG AA ✓ Pass

Any Text WCAG AA ✓ Pass

Large Text (above 18pt) WCAG AAA ✓ Pass

Any Text WCAG AAA × Fail

If you want to check with other color combinations, try the [Color Contrast Checker](#).

Android 4294006148 Background



This preview shows how black text looks on a background with the Android color 4294006148.

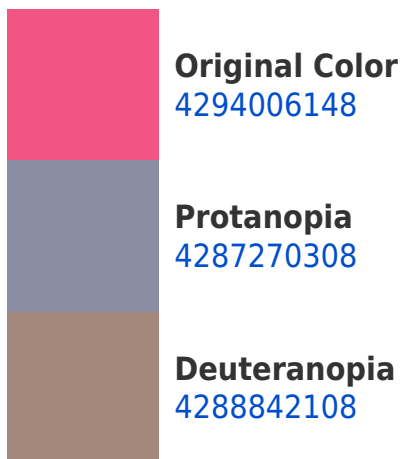


This preview shows how white text looks on a background with the Android color 4294006148.

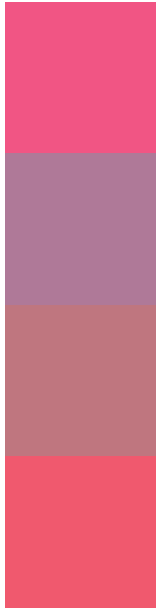
Color Blindness Simulation

Color vision deficiency is a very complex topic, and I could not describe the different causes any better than Wikipedia does, so if you want to learn more, you should check out their [article about color blindness](#).

Dichromacy



Trichromacy



Original Color
4294006148

Protanomaly
4289690008

Deuteranomaly
4290737791

Tritanomaly
4293941614

Monochromacy



Original Color
4294006148

Achromatopsia
4287203721

Achromatomaly
4289689223

CSS Examples

Text

The CSS property to change the color of the text to Android 4294006148 is called "color". The color property can be set on classes, ids or directly on the HTML element.

This example shows how text in the color `rgb(241, 85, 132)` looks like.

```
.text, #text, p{  
    color:rgb(241, 85, 132)  
}
```

If you want to add a text shadow in that color use the text-shadow property, you can generate a text shadow directly with our [CSS Text Shadow Generator](#).

Here you see how black text with a 4 pixel rgb(241, 85, 132) colored shadow looks like.

```
.shadow{ text-shadow: 4px 4px 2px rgb(241, 85, 132) }
```

Border

The CSS property to change the border of an element to Android 4294006148 is called "border". The border property can be set on classes, ids or directly on the HTML element.

This example shows the color as border, it can be applied via the CSS property "border" or "border-color".

```
.border, #border, table{ border:4px solid rgb(241, 85, 132) }
```

If only the border color should be changed use the property `border-color`.

```
.border{ border-color:rgb(241, 85, 132) }
```

If you want to add a box shadow in that color use:

Here you see how a box with a 4 pixel `rgb(241, 85, 132)` colored shadow looks like.

```
.boxshadow{ -moz-box-shadow:4px 4px 4px  
4px rgb(241, 85, 132); -webkit-box-  
shadow:4px 4px 4px 4px rgb(241, 85, 132);  
box-shadow:4px 4px 4px 4px rgb(241, 85,  
132) }
```

Background

The CSS property to change the background color of an element to Android 4294006148 is called "background". The background property can be set on classes, ids or directly on the HTML element.

```
.background, #background, body{  
background: rgb(241, 85, 132) }
```

If only the background color should be changed can be used:

```
.background{ background-color: rgb(241, 85,  
132) }
```

This example shows the color as background, it is applied via the CSS property "background".

To optimize and compress your CSS code, you can use our [online CSS compressor and optimizer](#) based on csstidy. If you want to create a linear or radial gradient as background or border, check our [CSS Gradient Generator](#).

Hey! You found this booklet interesting? Support Converting Colors with the new Membership Option!

The pro membership hides all ads, plus gives you double the colors in the color bucket, and more awesome pro features!

[Learn more, Memberships starting at \\$2.50/m!](#)

**Follow me
on Twitter!**

@ConvertingColor