

Converting Colors

Android(4294014856)

Have a look what the booklet for
Android(4294014856) contains.

Android(4294014856)	3
<i>Conversions</i>	4
<i>Details</i>	6
<i>Harmonies</i>	11
<i>Previews</i>	23
<i>Color Blindness Simulation</i>	26
<i>CSS Examples</i>	29

Color

Android(4294014856)

Conversions

Conversions Part 1

Format	Color
Hex	F17788
RGB	241, 119, 136
RGB Percent	95%, 47%, 53%
CMY	0.0549, 0.5333, 0.4667
CMYK	0.00, 0.51, 0.44, 0.05
HSL	352°, 81%, 71%
HSV	352°, 51%, 95%
XYZ	47.3164, 33.6720, 27.2980
YIQ	157.4160, 67.2550, 31.1510

Conversions

Conversions Part 2

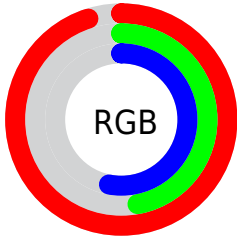
Format	Color
R_{YB}	241, 119, 136
Decimal	15824776
CIE _{Lab}	64.70, 48.42, 13.03
CIE _{LCh}	65, 50.144, 15.060
Yxy	33.6720, 0.4370, 0.3110
Android (android.graphics.Color)	4294014856 (0xFFFF17788)
YUV	157.4160, -10.5581, 73.3032
Hunter-Lab	58.0276, 44.0028, 12.7274

Details

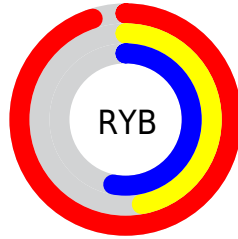
The Android color **4294014856** is a light color, and the websafe version is hex **CC6666**. A complement of this color would be **4286050784**, and the grayscale version is **4288519581**.

A 20% lighter version of the original color is **4294946493**, and **4290068822** is the 20% darker color. If you saturate the color by 10%, you get **4294008691**, and if you desaturate by 10%, it is **4294021021**.

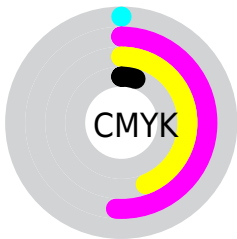
Distribution



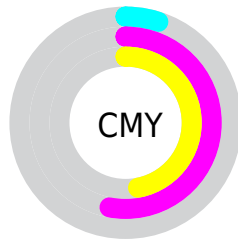
- Red (95%)
- Green (47%)
- Blue (53%)



- Red (95%)
- Yellow (47%)
- Blue (53%)



- Cyan (0%)
- Magenta (51%)
- Yellow (44%)
- Black (5%)



- Cyan (5%)
- Magenta (53%)
- Yellow (47%)

Brightness & Saturation Gradients

These gradients show how the Android color 4294014856 changes by changing the brightness by 10 percent. The first figure shows a shift by +10% for each color and the second figure -10%.

Similar to the brightness gradients but the following saturation gradients show a change of the Android color 4294014856 by changing the saturation by 10% instead.

 4294014856

 4294014856

4294967295

 4292041839

 4294946493

 4290068822

 4294953689

 4288161087

 4294961141

 4286251050

 4284350486

 4282580992

 4280745985

 4278190080

 4294014856

 4294014856

 4294008691

 4294021021

 4294002527

 4294027185

 4293996362

 4294033350

 4293990197

 4294039515

 4293984290

 4294045680

 4294049791

Harmonies

Analogous

The Analogous color harmony consists of three colors that are next to each other on the color wheel.



4293163701



4294014856



4293296735

Triad

The Triadic color harmony groups three colors that are evenly spaced from another and form a triangle on the color wheel.



4294014856



4285508699



4278233331

Complementary

The Complementary color scheme is a pair of colors which are on the opposite of each other on the color wheel.



4294014856



4286050784

Split Complementary

Split-complementary colors differ from the complementary color scheme. The scheme consists of three colors, the original color and two neighbors of the complement color.



4278235611



4294014856



4279612036

Square

The Square scheme is like the rectangle color scheme, but the four colors are evenly spaced on the color wheel.



4294014856



4288782914



4278236339



4286159604

Rectangle

The Rectangle color scheme consists of four colors that form a rectangle on the color wheel.



4294014856



4292185419



4278236339



4278234350

Sweetspot

The Sweet Spot groups the original color and five complimentary colors.



4294014856



4294957534



4292835313



4286605676



4278190080



4286611584

Same Dimension

The Same Dimension uses a secret algorithm to generate beautiful new colors.



4294014856



4294927225



4294025847



4286082158



4290248730



4281860104

Inverse Universe

The Inverse Universe completely reimagines the original color for something new.



4294014856



4294927225



4286039793



4286082158



4290248730



4281860104

Previews

White Background



This preview shows how the Android color 4294014856 looks on a white background.

Color Contrast Check

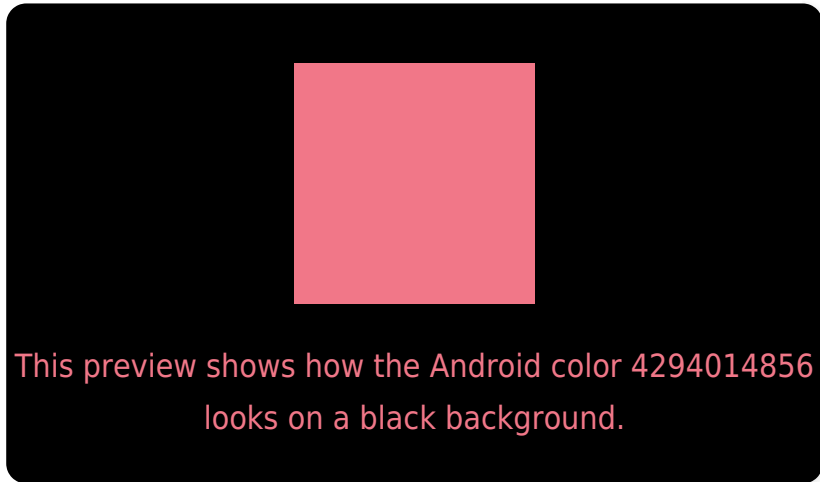
Large Text (above 18pt) WCAG AA × Fail

Any Text WCAG AA × Fail

Large Text (above 18pt) WCAG AAA × Fail

Any Text WCAG AAA × Fail

Black Background



Color Contrast Check

Large Text (above 18pt) WCAG AA ✓ Pass

Any Text WCAG AA ✓ Pass

Large Text (above 18pt) WCAG AAA ✓ Pass

Any Text WCAG AAA ✓ Pass

If you want to check with other color combinations, try the [Color Contrast Checker](#).

Android 4294014856 Background



This preview shows how black text looks on a background with the Android color 4294014856.



This preview shows how white text looks on a background with the Android color 4294014856.

Color Blindness Simulation

Color vision deficiency is a very complex topic, and I could not describe the different causes any better than Wikipedia does, so if you want to learn more, you should check out their [article about color blindness](#).

Dichromacy

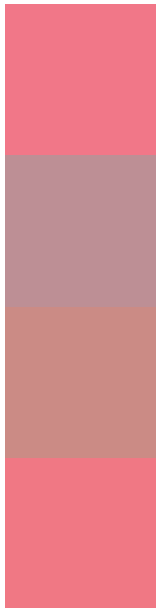


Original Color
4294014856

Protanopia
4288716188

Deuteranopia
4290156419

Trichromacy



Original Color
4294014856

Protanomaly
4290613141

Deuteranomaly
4291529605

Tritanomaly
4293949572

Monochromacy



Original Color
4294014856

Achromatopsia
4288519581

Achromatomaly
4290547605

CSS Examples

Text

The CSS property to change the color of the text to Android 4294014856 is called "color". The color property can be set on classes, ids or directly on the HTML element.

This example shows how text in the color `rgb(241, 119, 136)` looks like.

```
.text, #text, p{  
    color:rgb(241, 119, 136)  
}
```

If you want to add a text shadow in that color use the text-shadow property, you can generate a text shadow directly with our [CSS Text Shadow Generator](#).

Here you see how black text with a 4 pixel rgb(241, 119, 136) colored shadow looks like.

```
.shadow{ text-shadow: 4px 4px 2px rgb(241, 119, 136) }
```

Border

The CSS property to change the border of an element to Android 4294014856 is called "border". The border property can be set on classes, ids or directly on the HTML element.

This example shows the color as border, it can be applied via the CSS property "border" or "border-color".

```
.border, #border, table{ border:4px solid rgb(241, 119, 136) }
```

If only the border color should be changed use the property `border-color`.

```
.border{ border-color:rgb(241, 119, 136) }
```

If you want to add a box shadow in that color use:

Here you see how a box with a 4 pixel `rgb(241, 119, 136)` colored shadow looks like.

```
.boxshadow{ -moz-box-shadow:4px 4px 4px  
4px rgb(241, 119, 136); -webkit-box-  
shadow:4px 4px 4px 4px rgb(241, 119, 136);  
box-shadow:4px 4px 4px 4px rgb(241, 119,  
136) }
```

Background

The CSS property to change the background color of an element to Android 4294014856 is called "background". The background property can be set on classes, ids or directly on the HTML element.

```
.background, #background, body{  
background: rgb(241, 119, 136) }
```

If only the background color should be changed can be used:

```
.background{ background-color: rgb(241,  
119, 136) }
```

This example shows the color as background, it is applied via the CSS property "background".

To optimize and compress your CSS code, you can use our [online CSS compressor and optimizer](#) based on csstidy. If you want to create a linear or radial gradient as background or border, check our [CSS Gradient Generator](#).

Hey! You found this booklet interesting? Support Converting Colors with the new Membership Option!

The pro membership hides all ads, plus gives you double the colors in the color bucket, and more awesome pro features!

[Learn more, Memberships starting at \\$2.50/m!](#)

**Follow me
on Twitter!**

@ConvertingColor