

Converting Colors

Android(4294026684)

Have a look what the booklet for
Android(4294026684) contains.

Android(4294026684)	3
<i>Conversions</i>	4
<i>Details</i>	6
<i>Harmonies</i>	11
<i>Previews</i>	23
<i>Color Blindness Simulation</i>	26
<i>CSS Examples</i>	29

Color

Android(4294026684)

Conversions

Conversions Part 1

Format	Color
Hex	F1A5BC
RGB	241, 165, 188
RGB Percent	95%, 65%, 74%
CMY	0.0549, 0.3529, 0.2627
CMYK	0.00, 0.32, 0.22, 0.05
HSL	342°, 73%, 80%
HSV	342°, 32%, 95%
XYZ	58.8079, 49.2419, 53.9821
YIQ	190.3460, 37.9130, 23.2650

Conversions

Conversions Part 2

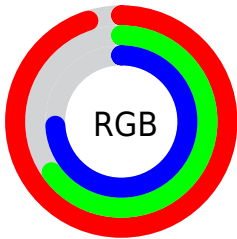
Format	Color
R_{YB}	241, 165, 188
Decimal	15836604
CIE _{Lab}	75.60, 31.22, -0.36
CIE _{LCh}	76, 31.226, 359.342
Yxy	49.2419, 0.3629, 0.3039
Android (android.graphics.Color)	4294026684 (0xFFFF1A5BC)
YUV	190.3460, -1.1566, 44.4236
Hunter-Lab	70.1726, 26.7893, 3.5104

Details

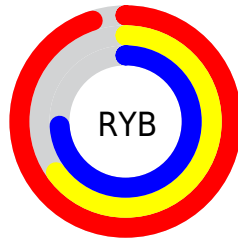
The Android color `4294026684` is a light color, and the websafe version is hex `FF99CC`. A complement of this color would be `4289065434`, and the grayscale version is `4290690750`.

A 20% lighter version of the original color is `4294958580`, and `4290277511` is the 20% darker color. If you saturate the color by 10%, you get `4294020523`, and if you desaturate by 10%, it is `4294032845`.

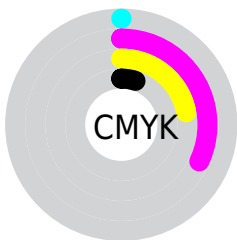
Distribution



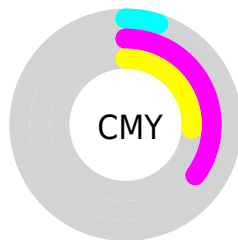
- Red (95%)
- Green (65%)
- Blue (74%)



- Red (95%)
- Yellow (65%)
- Blue (74%)



- Cyan (0%)
- Magenta (32%)
- Yellow (22%)
- Black (5%)



- Cyan (5%)
- Magenta (35%)
- Yellow (26%)

Brightness & Saturation Gradients

These gradients show how the Android color 4294026684 changes by changing the brightness by 10 percent. The first figure shows a shift by +10% for each color and the second figure -10%.

Similar to the brightness gradients but the following saturation gradients show a change of the Android color 4294026684 by changing the saturation by 10% instead.

 4294026684

 4294026684

4294967295

 4292119201

 4294958580

 4290277511

 4294965759

 4288436078

 4286660181

 4284884798

 4283239976

 4281597972

 4279828481

 4278190080

 4294026684

 4294026684

 4294020523

 4294032845

 4294014362

 4294039006

 4294008202

 4294045166

 4294002041

 4294049791

 4293995880

 4293989463

 4293984329

Harmonies

Analogous

The Analogous color harmony consists of three colors that are next to each other on the color wheel.



4292848344



4294026684



4294158239

Triad

The Triadic color harmony groups three colors that are evenly spaced from another and form a triangle on the color wheel.



4294026684



4289839495



4285449707

Complementary

The Complementary color scheme is a pair of colors which are on the opposite of each other on the color wheel.



4294026684



4289065434

Split Complementary

Split-complementary colors differ from the complementary color scheme. The scheme consists of three colors, the original color and two neighbors of the complement color.



4284467669



4294026684



4287612828

Square

The Square scheme is like the rectangle color scheme, but the four colors are evenly spaced on the color wheel.



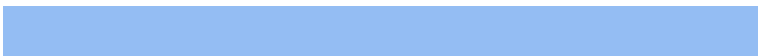
4294026684



4291803265



4285582009



4287938035

Rectangle

The Rectangle color scheme consists of four colors that form a rectangle on the color wheel.



4294026684



4293700752



4285582009



4284860389

Sweetspot

The Sweet Spot groups the original color and five complimentary colors.



4294026684



4294961391



4292453873



4286607734



4278190080



4286611584

Same Dimension

The Same Dimension uses a secret algorithm to generate beautiful new colors.



4294026684



4294942395



4294030245



4286082159



4290248760



4281860113

Inverse Universe

The Inverse Universe completely reimagines the original color for something new.



4294026684



4294942395



4289061873



4286082159



4290248760



4281860113

Previews

White Background



This preview shows how the Android color 4294026684 looks on a white background.

Color Contrast Check

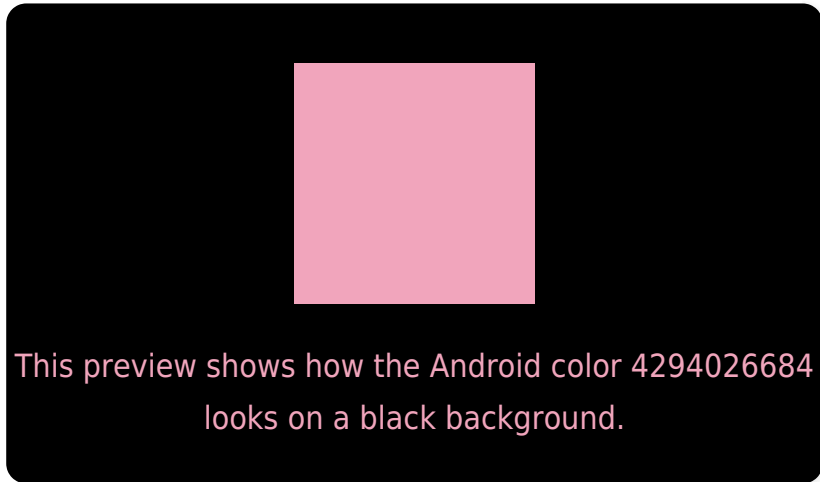
Large Text (above 18pt) WCAG AA × Fail

Any Text WCAG AA × Fail

Large Text (above 18pt) WCAG AAA × Fail

Any Text WCAG AAA × Fail

Black Background



Color Contrast Check

Large Text (above 18pt) WCAG AA ✓ Pass

Any Text WCAG AA ✓ Pass

Large Text (above 18pt) WCAG AAA ✓ Pass

Any Text WCAG AAA ✓ Pass

If you want to check with other color combinations, try the [Color Contrast Checker](#).

Android 4294026684 Background



This preview shows how black text looks on a background with the Android color 4294026684.




This preview shows how white text looks on a background with the Android color 4294026684.

Color Blindness Simulation

Color vision deficiency is a very complex topic, and I could not describe the different causes any better than Wikipedia does, so if you want to learn more, you should check out their [article about color blindness](#).

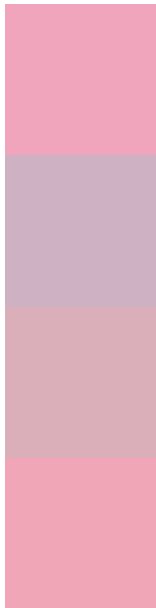
Dichromacy





Tritanopia
4293961395

Trichromacy



Original Color
4294026684

Protanomaly
4291736260

Deuteranomaly
4292521914

Tritanomaly
4293961398

Monochromacy



Original Color
4294026684

Achromatopsia
4290690750

Achromatomaly
4291933629

CSS Examples

Text

The CSS property to change the color of the text to Android 4294026684 is called "color". The color property can be set on classes, ids or directly on the HTML element.

This example shows how text in the color `rgb(241, 165, 188)` looks like.

```
.text, #text, p{  
    color:rgb(241, 165, 188)  
}
```

If you want to add a text shadow in that color use the text-shadow property, you can generate a text shadow directly with our [CSS Text Shadow Generator](#).

Here you see how black text with a 4 pixel rgb(241, 165, 188) colored shadow looks like.

```
.shadow{ text-shadow: 4px 4px 2px rgb(241, 165, 188) }
```

Border

The CSS property to change the border of an element to Android 4294026684 is called "border". The border property can be set on classes, ids or directly on the HTML element.

This example shows the color as border, it can be applied via the CSS property "border" or "border-color".

```
.border, #border, table{ border:4px solid rgb(241, 165, 188) }
```

If only the border color should be changed use the property `border-color`.

```
.border{ border-color:rgb(241, 165, 188) }
```

If you want to add a box shadow in that color use:

Here you see how a box with a 4 pixel `rgb(241, 165, 188)` colored shadow looks like.

```
.boxshadow{ -moz-box-shadow:4px 4px 4px  
4px rgb(241, 165, 188); -webkit-box-  
shadow:4px 4px 4px 4px rgb(241, 165, 188);  
box-shadow:4px 4px 4px 4px rgb(241, 165,  
188) }
```

Background

The CSS property to change the background color of an element to Android 4294026684 is called "background". The background property can be set on classes, ids or directly on the HTML element.

```
.background, #background, body{  
background: rgb(241, 165, 188) }
```

If only the background color should be changed can be used:

```
.background{ background-color: rgb(241,  
165, 188) }
```

This example shows the color as background, it is applied via the CSS property "background".

To optimize and compress your CSS code, you can use our [online CSS compressor and optimizer](#) based on csstidy. If you want to create a linear or radial gradient as background or border, check our [CSS Gradient Generator](#).

Hey! You found this booklet interesting? Support Converting Colors with the new Membership Option!

The pro membership hides all ads, plus gives you double the colors in the color bucket, and more awesome pro features!

[Learn more, Memberships starting at \\$2.50/m!](#)

**Follow me
on Twitter!**

@ConvertingColor