

Converting Colors

Android(4294032809)

Have a look what the booklet for
Android(4294032809) contains.

Android(4294032809)	3
<i>Conversions</i>	4
<i>Details</i>	6
<i>Harmonies</i>	11
<i>Previews</i>	23
<i>Color Blindness Simulation</i>	26
<i>CSS Examples</i>	29

Color

Android(4294032809)

Conversions

Conversions Part 1

Format	Color
Hex	F1BDA9
RGB	241, 189, 169
RGB Percent	95%, 74%, 66%
CMY	0.0549, 0.2588, 0.3373
CMYK	0.00, 0.22, 0.30, 0.05
HSL	17°, 72%, 80%
HSV	17°, 30%, 95%
XYZ	61.6347, 57.9605, 45.4751
YIQ	202.2680, 37.4120, 4.8040

Conversions

Conversions Part 2

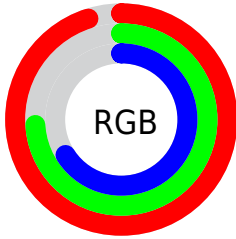
Format	Color
R _Y B	241, 197, 169
Decimal	15842729
CIE Lab	80.72, 15.90, 17.26
CIE LCh	81, 23.461, 47.349
Yxy	57.9605, 0.3734, 0.3511
Android (android.graphics.Color)	4294032809 (0xFFFF1BDA9)
YUV	202.2680, -16.4011, 33.9680
Hunter-Lab	76.1318, 11.2790, 17.8771

Details

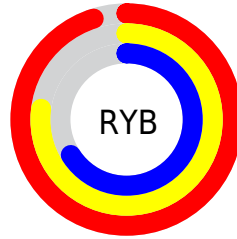
The Android color `4294032809` is a light color, and the websafe version is hex `FFCCCC`. A complement of this color would be `4289322481`, and the grayscale version is `4291480266`.

A 20% lighter version of the original color is `4294964704`, and `4290283637` is the 20% darker color. If you saturate the color by 10%, you get `4294028433`, and if you desaturate by 10%, it is `4294037185`.

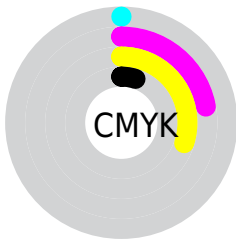
Distribution



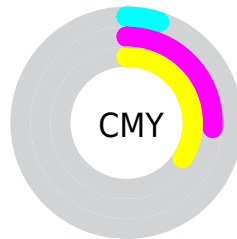
- Red (95%)
- Green (74%)
- Blue (66%)



- Red (95%)
- Yellow (77%)
- Blue (66%)



- Cyan (0%)
- Magenta (22%)
- Yellow (30%)
- Black (5%)



- Cyan (5%)
- Magenta (26%)
- Yellow (34%)

Brightness & Saturation Gradients

These gradients show how the Android color 4294032809 changes by changing the brightness by 10 percent. The first figure shows a shift by +10% for each color and the second figure -10%.

Similar to the brightness gradients but the following saturation gradients show a change of the Android color 4294032809 by changing the saturation by 10% instead.

 4294032809

 4294032809

4294967295

 4292125327

 4294964704

 4290283637

4294967293

 4288441948

 4286666309

 4284956206

 4283246617

 4281733888

 4280221696

 4278190080

■ 4294032809

■ 4294032809

■ 4294028433

■ 4294037185

■ 4294023801

■ 4294041817

■ 4294019425

■ 4294046193

■ 4294014793

■ 4294049791

■ 4294010416

■ 4294006040

■ 4294001408

Harmonies

Analogous

The Analogous color harmony consists of three colors that are next to each other on the color wheel.



4294359484



4294032809



4293051550

Triad

The Triadic color harmony groups three colors that are evenly spaced from another and form a triangle on the color wheel.



4294032809



4288402622



4290823922

Complementary

The Complementary color scheme is a pair of colors which are on the opposite of each other on the color wheel.



4294032809



4289322481

Split Complementary

Split-complementary colors differ from the complementary color scheme. The scheme consists of three colors, the original color and two neighbors of the complement color.



4288925171



4294032809



4287485397

Square

The Square scheme is like the rectangle color scheme, but the four colors are evenly spaced on the color wheel.



4294032809



4289974698



4287615720



4292591590

Rectangle

The Rectangle color scheme consists of four colors that form a rectangle on the color wheel.



4294032809



4292135325



4287615720



4290169075

Sweetspot

The Sweet Spot groups the original color and five complimentary colors.



4294032809



4294962920



4294027742



4286608753



4278190080



4286611584

Same Dimension

The Same Dimension uses a secret algorithm to generate beautiful new colors.



4294032809



4294950307



4294041769



4286082924



4290261760



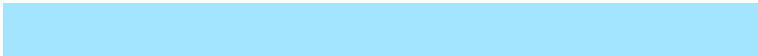
4281864192

Inverse Universe

The Inverse Universe completely reimagines the original color for something new.



4289322481



4288931327



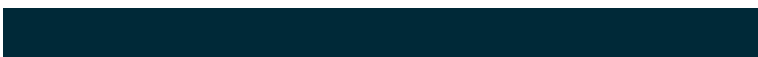
4289313521



4285298040



4278224312



4278200632

Previews

White Background



This preview shows how the Android color 4294032809 looks on a white background.

Color Contrast Check

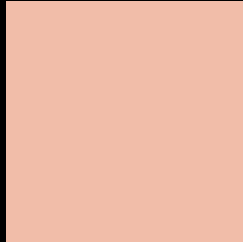
Large Text (above 18pt) WCAG AA × Fail

Any Text WCAG AA × Fail

Large Text (above 18pt) WCAG AAA × Fail

Any Text WCAG AAA × Fail

Black Background



This preview shows how the Android color 4294032809 looks on a black background.

Color Contrast Check

Large Text (above 18pt) WCAG AA ✓ Pass

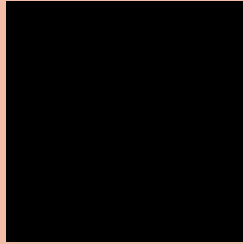
Any Text WCAG AA ✓ Pass

Large Text (above 18pt) WCAG AAA ✓ Pass

Any Text WCAG AAA ✓ Pass

If you want to check with other color combinations, try the [Color Contrast Checker](#).

Android 4294032809 Background



This preview shows how black text looks on a background with the Android color 4294032809.



This preview shows how white text looks on a background with the Android color 4294032809.

Color Blindness Simulation

Color vision deficiency is a very complex topic, and I could not describe the different causes any better than Wikipedia does, so if you want to learn more, you should check out their [article about color blindness](#).

Dichromacy





Tritanopia
4294228423

Trichromacy



Original Color
4294032809

Protanomaly
4292723885

Deuteranomaly
4293640360

Tritanomaly
4294163132

Monochromacy



Original Color
4294032809

Achromatopsia
4291480266

Achromatomaly
4292396478

CSS Examples

Text

The CSS property to change the color of the text to Android 4294032809 is called "color". The color property can be set on classes, ids or directly on the HTML element.

This example shows how text in the color `rgb(241, 189, 169)` looks like.

```
.text, #text, p{  
    color:rgb(241, 189, 169)  
}
```

If you want to add a text shadow in that color use the text-shadow property, you can generate a text shadow directly with our [CSS Text Shadow Generator](#).

Here you see how black text with a 4 pixel rgb(241, 189, 169) colored shadow looks like.

```
.shadow{ text-shadow: 4px 4px 2px rgb(241, 189, 169) }
```

Border

The CSS property to change the border of an element to Android 4294032809 is called "border". The border property can be set on classes, ids or directly on the HTML element.

This example shows the color as border, it can be applied via the CSS property "border" or "border-color".

```
.border, #border, table{ border:4px solid rgb(241, 189, 169) }
```

If only the border color should be changed use the property `border-color`.

```
.border{ border-color:rgb(241, 189, 169) }
```

If you want to add a box shadow in that color use:

Here you see how a box with a 4 pixel `rgb(241, 189, 169)` colored shadow looks like.

```
.boxshadow{ -moz-box-shadow:4px 4px 4px  
4px rgb(241, 189, 169); -webkit-box-  
shadow:4px 4px 4px 4px rgb(241, 189, 169);  
box-shadow:4px 4px 4px 4px rgb(241, 189,  
169) }
```

Background

The CSS property to change the background color of an element to Android 4294032809 is called "background". The background property can be set on classes, ids or directly on the HTML element.

```
.background, #background, body{  
background: rgb(241, 189, 169) }
```

If only the background color should be changed can be used:

```
.background{ background-color: rgb(241,  
189, 169) }
```

This example shows the color as background, it is applied via the CSS property "background".

To optimize and compress your CSS code, you can use our [online CSS compressor and optimizer](#) based on csstidy. If you want to create a linear or radial gradient as background or border, check our [CSS Gradient Generator](#).

Hey! You found this booklet interesting? Support Converting Colors with the new Membership Option!

The pro membership hides all ads, plus gives you double the colors in the color bucket, and more awesome pro features!

[Learn more, Memberships starting at \\$2.50/m!](#)

**Follow me
on Twitter!**

@ConvertingColor