

Converting Colors

Android(4294062955)

Have a look what the booklet for
Android(4294062955) contains.

Android(4294062955)	3
<i>Conversions</i>	4
<i>Details</i>	6
<i>Harmonies</i>	11
<i>Previews</i>	23
<i>Color Blindness Simulation</i>	26
<i>CSS Examples</i>	29

Color

Android(4294062955)

Conversions

Conversions Part 1

Format	Color
Hex	F2336B
RGB	242, 51, 107
RGB Percent	95%, 20%, 42%
CMY	0.0510, 0.8000, 0.5804
CMYK	0.00, 0.79, 0.56, 0.05
HSL	342°, 88%, 57%
HSV	342°, 79%, 95%
XYZ	40.4556, 22.3064, 16.0832
YIQ	114.4930, 95.8600, 57.9080

Conversions

Conversions Part 2

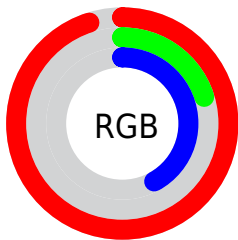
Format	Color
R_{YB}	242, 51, 107
Decimal	15872875
CIE _{Lab}	54.35, 72.88, 15.57
CIE _{LCh}	54, 74.521, 12.061
Yxy	22.3064, 0.5131, 0.2829
Android (android.graphics.Color)	4294062955 (0xFFFF2336B)
YUV	114.4930, -3.6940, 111.8236
Hunter-Lab	47.2297, 70.2461, 12.8706

Details

The Android color **4294062955** is a dark color, and the websafe version is hex **FF3366**. The color can be described as middle washed rose. A complement of this color would be **4281594554**, and the grayscale version is **4285690482**.

A 20% lighter version of the original color is **4294931614**, and **4289921084** is the 20% darker color. If you saturate the color by 10%, you get **4294056794**, and if you desaturate by 10%, it is **4294069116**.

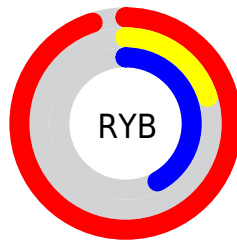
Distribution



Red (95%)

Green (20%)

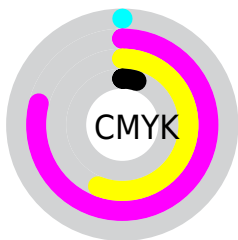
Blue (42%)



Red (95%)

Yellow (20%)

Blue (42%)

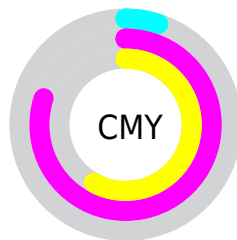


Cyan (0%)

Magenta (79%)

Yellow (56%)

Black (5%)



Cyan (5%)

Magenta (80%)

Yellow (58%)

Brightness & Saturation Gradients

These gradients show how the Android color 4294062955 changes by changing the brightness by 10 percent. The first figure shows a shift by +10% for each color and the second figure -10%.

Similar to the brightness gradients but the following saturation gradients show a change of the Android color 4294062955 by changing the saturation by 10% instead.



4294062955



4294062955

4294967295



4291952723



4294931614



4289921084



4294939065



4287889447



4294946772



4285857811



4294954481



4283891715



4294962175



4281860098



4279107584



4278190080



4294062955



4294062955

 4294056794

 4294069116

 4294050633

 4294075277

 4294049863

 4294081694

 4294087855

 4294094017

 4294100178

 4294106339

 4294112756

 4294115327

Harmonies

Analogous

The Analogous color harmony consists of three colors that are next to each other on the color wheel.



4292886443



4294062955



4293087277

Triad

The Triadic color harmony groups three colors that are evenly spaced from another and form a triangle on the color wheel.



4294062955



4281832713



4278228221

Complementary

The Complementary color scheme is a pair of colors which are on the opposite of each other on the color wheel.



4294062955



4281594554

Split Complementary

Split-complementary colors differ from the complementary color scheme. The scheme consists of three colors, the original color and two neighbors of the complement color.



4278230231



4294062955



4278230104

Square

The Square scheme is like the rectangle color scheme, but the four colors are evenly spaced on the color wheel.



4294062955



4286940928



4278230683



4278223359

Rectangle

The Rectangle color scheme consists of four colors that form a rectangle on the color wheel.



4294062955



4291520256



4278230683



4278229236

Sweetspot

The Sweet Spot groups the original color and five complimentary colors.



4294062955



4294951636



4290327538



4286602085



4278190080



4286611584

Same Dimension

The Same Dimension uses a secret algorithm to generate beautiful new colors.



4294062955



4294905172



4294072627



4286082159



4290248758



4281860112

Inverse Universe

The Inverse Universe completely reimagines the original color for something new.



4294062955



4294905172



4281584882



4286082159



4290248758



4281860112

Previews

White Background



This preview shows how the Android color 4294062955 looks on a white background.

Color Contrast Check

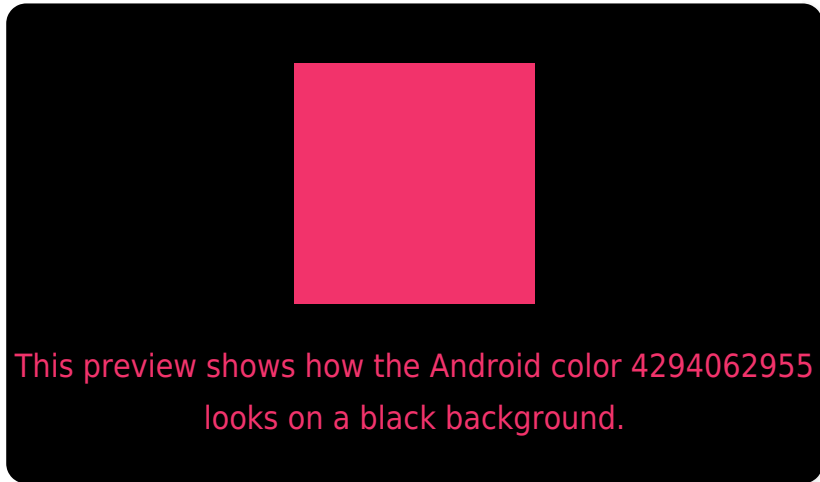
Large Text (above 18pt) WCAG AA ✓ Pass

Any Text WCAG AA ✗ Fail

Large Text (above 18pt) WCAG AAA ✗ Fail

Any Text WCAG AAA ✗ Fail

Black Background



Color Contrast Check

Large Text (above 18pt) WCAG AA ✓ Pass

Any Text WCAG AA ✓ Pass

Large Text (above 18pt) WCAG AAA ✓ Pass

Any Text WCAG AAA × Fail

If you want to check with other color combinations, try the [Color Contrast Checker](#).

Android 4294062955 Background



This preview shows how black text looks on a background with the Android color 4294062955.

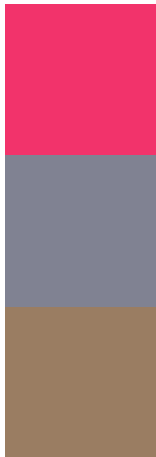


This preview shows how white text looks on a background with the Android color 4294062955.

Color Blindness Simulation

Color vision deficiency is a very complex topic, and I could not describe the different causes any better than Wikipedia does, so if you want to learn more, you should check out their [article about color blindness](#).

Dichromacy

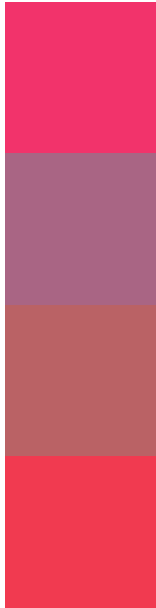


Original Color
4294062955

Protanopia
4286612114

Deuteranopia
4288314722

Trichromacy



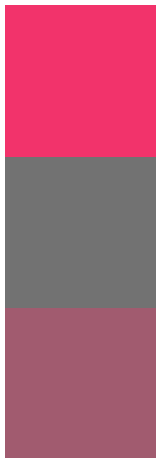
Original Color
4294062955

Protanomaly
4289291652

Deuteranomaly
4290404965

Tritanomaly
4293999184

Monochromacy



Original Color
4294062955

Achromatopsia
4285690482

Achromatomaly
4288764783

CSS Examples

Text

The CSS property to change the color of the text to Android 4294062955 is called "color". The color property can be set on classes, ids or directly on the HTML element.

This example shows how text in the color `rgb(242, 51, 107)` looks like.

```
.text, #text, p{  
    color:rgb(242, 51, 107)  
}
```

If you want to add a text shadow in that color use the text-shadow property, you can generate a text shadow directly with our [CSS Text Shadow Generator](#).

Here you see how black text with a 4 pixel rgb(242, 51, 107) colored shadow looks like.

```
.shadow{ text-shadow: 4px 4px 2px rgb(242, 51, 107) }
```

Border

The CSS property to change the border of an element to Android 4294062955 is called "border". The border property can be set on classes, ids or directly on the HTML element.

This example shows the color as border, it can be applied via the CSS property "border" or "border-color".

```
.border, #border, table{ border:4px solid rgb(242, 51, 107) }
```

If only the border color should be changed use the property border-color.

```
.border{ border-color:rgb(242, 51, 107) }
```

If you want to add a box shadow in that color use:

Here you see how a box with a 4 pixel rgb(242, 51, 107) colored shadow looks like.

```
.boxshadow{ -moz-box-shadow:4px 4px 4px  
4px rgb(242, 51, 107); -webkit-box-  
shadow:4px 4px 4px 4px rgb(242, 51, 107);  
box-shadow:4px 4px 4px 4px rgb(242, 51,  
107) }
```

Background

The CSS property to change the background color of an element to Android 4294062955 is called "background". The background property can be set on classes, ids or directly on the HTML element.

```
.background, #background, body{  
background: rgb(242, 51, 107) }
```

If only the background color should be changed can be used:

```
.background{ background-color: rgb(242, 51,  
107) }
```

This example shows the color as background, it is applied via the CSS property "background".

To optimize and compress your CSS code, you can use our [online CSS compressor and optimizer](#) based on csstidy. If you want to create a linear or radial gradient as background or border, check our [CSS Gradient Generator](#).

Hey! You found this booklet interesting? Support Converting Colors with the new Membership Option!

The pro membership hides all ads, plus gives you double the colors in the color bucket, and more awesome pro features!

[Learn more, Memberships starting at \\$2.50/m!](#)

**Follow me
on Twitter!**

@ConvertingColor