

Converting Colors

Android(4294064753)

Have a look what the booklet for
Android(4294064753) contains.

Android(4294064753)	3
<i>Conversions</i>	4
<i>Details</i>	6
<i>Harmonies</i>	11
<i>Previews</i>	23
<i>Color Blindness Simulation</i>	26
<i>CSS Examples</i>	29

Color

Android(4294064753)

Conversions

Conversions Part 1

Format	Color
Hex	F23A71
RGB	242, 58, 113
RGB Percent	95%, 23%, 44%
CMY	0.0510, 0.7725, 0.5569
CMYK	0.00, 0.76, 0.53, 0.05
HSL	342°, 88%, 59%
HSV	342°, 76%, 95%
XYZ	41.1116, 23.0956, 17.9139
YIQ	119.2860, 92.0090, 56.1130

Conversions

Conversions Part 2

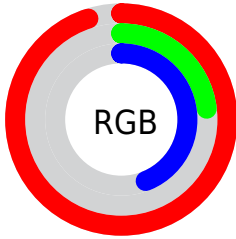
Format	Color
R_{YB}	242, 58, 113
Decimal	15874673
CIE _{Lab}	55.17, 71.36, 13.12
CIE _{LCh}	55, 72.559, 10.415
Yxy	23.0956, 0.5006, 0.2812
Android (android.graphics.Color)	4294064753 (0xFFFF23A71)
YUV	119.2860, -3.0990, 107.6202
Hunter-Lab	48.0579, 68.5984, 11.5398

Details

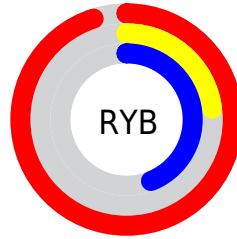
The Android color **4294064753** is a dark color, and the websafe version is hex **FF3366**. The color can be described as middle washed rose. A complement of this color would be **4282053307**, and the grayscale version is **4286019447**.

A 20% lighter version of the original color is **4294932900**, and **4289921090** is the 20% darker color. If you saturate the color by 10%, you get **4294058592**, and if you desaturate by 10%, it is **4294070914**.

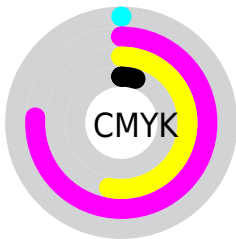
Distribution



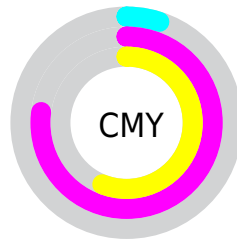
- Red (95%)
- Green (23%)
- Blue (44%)



- Red (95%)
- Yellow (23%)
- Blue (44%)



- Cyan (0%)
- Magenta (76%)
- Yellow (53%)
- Black (5%)



- Cyan (5%)
- Magenta (77%)
- Yellow (56%)

Brightness & Saturation Gradients


These gradients show how the Android color 4294064753 changes by changing the brightness by 10 percent. The first figure shows a shift by +10% for each color and the second figure -10%.

Similar to the brightness gradients but the following saturation gradients show a change of the Android color 4294064753 by changing the saturation by 10% instead.

 4294064753

 4294064753

4294967295

 4291954777

 4294932900

 4289921090

 4294940351

 4287889452

 4294948059

 4285923352

 4294955512

 4283957250

 4294963199

 4281991170

 4279369728

 4278190080

 4294064753

 4294064753

 4294058592

 4294070914

 4294052431

 4294077075

 4294049864

 4294083492

 4294089653

 4294095814

 4294101975

 4294108136

 4294114553

 4294115327

Harmonies

Analogous

The Analogous color harmony consists of three colors that are next to each other on the color wheel.



4292757424



4294064753



4293219125

Triad

The Triadic color harmony groups three colors that are evenly spaced from another and form a triangle on the color wheel.



4294064753



4282619406



4278228731

Complementary

The Complementary color scheme is a pair of colors which are on the opposite of each other on the color wheel.



4294064753



4282053307

Split Complementary

Split-complementary colors differ from the complementary color scheme. The scheme consists of three colors, the original color and two neighbors of the complement color.



4278230741



4294064753



4278230359

Square

The Square scheme is like the rectangle color scheme, but the four colors are evenly spaced on the color wheel.



4294064753



4287334400



4278231193



4278224383

Rectangle

The Rectangle color scheme consists of four colors that form a rectangle on the color wheel.



4294064753



4291782657



4278231193



4278229746

Sweetspot

The Sweet Spot groups the original color and five complimentary colors.



4294064753



4294952150



4290460402



4286602342



4278190080



4286611584

Same Dimension

The Same Dimension uses a secret algorithm to generate beautiful new colors.



4294064753



4294907740



4294074170



4286082159



4290248759



4281860113

Inverse Universe

The Inverse Universe completely reimagines the original color for something new.



4294064753



4294907740



4282043890



4286082159



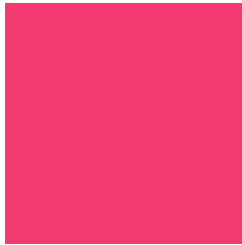
4290248759



4281860113

Previews

White Background



This preview shows how the Android color 4294064753 looks on a white background.

Color Contrast Check

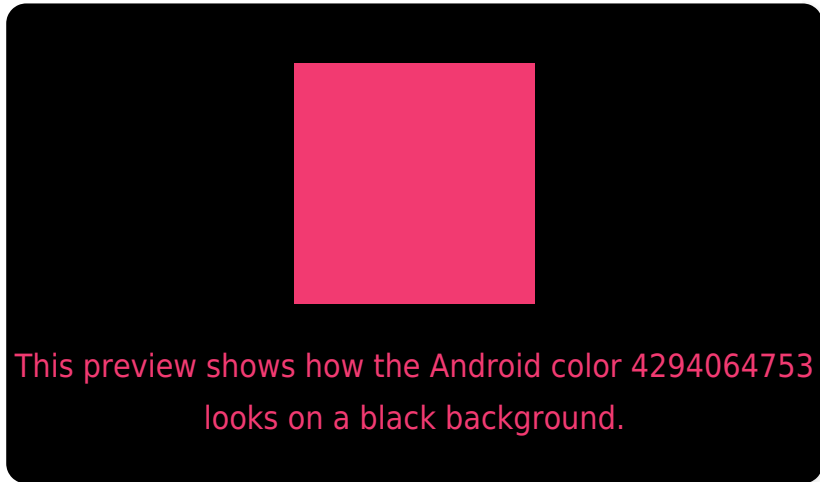
Large Text (above 18pt) WCAG AA ✓ Pass

Any Text WCAG AA ✗ Fail

Large Text (above 18pt) WCAG AAA ✗ Fail

Any Text WCAG AAA ✗ Fail

Black Background



Color Contrast Check

Large Text (above 18pt) WCAG AA ✓ Pass

Any Text WCAG AA ✓ Pass

Large Text (above 18pt) WCAG AAA ✓ Pass

Any Text WCAG AAA × Fail

If you want to check with other color combinations, try the [Color Contrast Checker](#).

Android 4294064753 Background



This preview shows how black text looks on a background with the Android color 4294064753.



This preview shows how white text looks on a background with the Android color 4294064753.

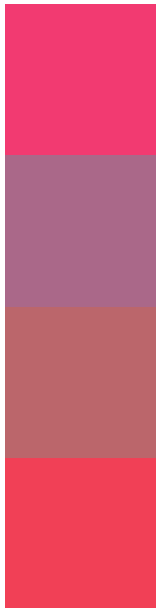
Color Blindness Simulation

Color vision deficiency is a very complex topic, and I could not describe the different causes any better than Wikipedia does, so if you want to learn more, you should check out their [article about color blindness](#).

Dichromacy



Trichromacy



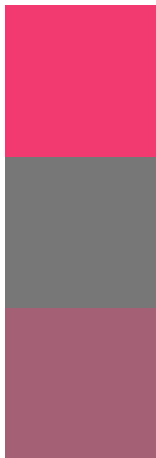
Original Color
4294064753

Protanomaly
4289357961

Deuteranomaly
4290471531

Tritanomaly
4294000726

Monochromacy



Original Color
4294064753

Achromatopsia
4286019447

Achromatomaly
4288962933

CSS Examples

Text

The CSS property to change the color of the text to Android 4294064753 is called "color". The color property can be set on classes, ids or directly on the HTML element.

This example shows how text in the color `rgb(242, 58, 113)` looks like.

```
.text, #text, p{  
    color:rgb(242, 58, 113)  
}
```

If you want to add a text shadow in that color use the text-shadow property, you can generate a text shadow directly with our [CSS Text Shadow Generator](#).

Here you see how black text with a 4 pixel rgb(242, 58, 113) colored shadow looks like.

```
.shadow{ text-shadow: 4px 4px 2px rgb(242, 58, 113) }
```

Border

The CSS property to change the border of an element to Android 4294064753 is called "border". The border property can be set on classes, ids or directly on the HTML element.

This example shows the color as border, it can be applied via the CSS property "border" or "border-color".

```
.border, #border, table{ border:4px solid rgb(242, 58, 113) }
```

If only the border color should be changed use the property `border-color`.

```
.border{ border-color:rgb(242, 58, 113) }
```

If you want to add a box shadow in that color use:

Here you see how a box with a 4 pixel `rgb(242, 58, 113)` colored shadow looks like.

```
.boxshadow{ -moz-box-shadow:4px 4px 4px 4px rgb(242, 58, 113); -webkit-box-shadow:4px 4px 4px 4px rgb(242, 58, 113); box-shadow:4px 4px 4px 4px rgb(242, 58, 113) }
```

Background

The CSS property to change the background color of an element to Android 4294064753 is called "background". The background property can be set on classes, ids or directly on the HTML element.

```
.background, #background, body{  
background: rgb(242, 58, 113) }
```

If only the background color should be changed can be used:

```
.background{ background-color: rgb(242, 58,  
113) }
```

This example shows the color as background, it is applied via the CSS property "background".

To optimize and compress your CSS code, you can use our [online CSS compressor and optimizer](#) based on csstidy. If you want to create a linear or radial gradient as background or border, check our [CSS Gradient Generator](#).

Hey! You found this booklet interesting? Support Converting Colors with the new Membership Option!

The pro membership hides all ads, plus gives you double the colors in the color bucket, and more awesome pro features!

[Learn more, Memberships starting at \\$2.50/m!](#)

**Follow me
on Twitter!**

@ConvertingColor