

Converting Colors

Android(4294068355)

Have a look what the booklet for
Android(4294068355) contains.

Android(4294068355)	3
<i>Conversions</i>	4
<i>Details</i>	6
<i>Harmonies</i>	11
<i>Previews</i>	23
<i>Color Blindness Simulation</i>	26
<i>CSS Examples</i>	29

Color

Android(4294068355)

Conversions

Conversions Part 1

Format	Color
Hex	F24883
RGB	242, 72, 131
RGB Percent	95%, 28%, 51%
CMY	0.0510, 0.7176, 0.4863
CMYK	0.00, 0.70, 0.46, 0.05
HSL	339°, 87%, 62%
HSV	339°, 70%, 95%
XYZ	43.0320, 25.1507, 24.0593
YIQ	129.5560, 82.3810, 54.3890

Conversions

Conversions Part 2

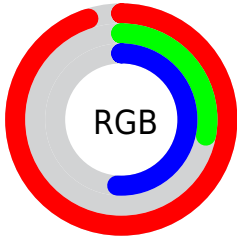
Format	Color
R_{YB}	242, 72, 131
Decimal	15878275
CIE Lab	57.22, 68.32, 5.33
CIE LCh	57, 68.528, 4.463
Yxy	25.1507, 0.4665, 0.2727
Android (android.graphics.Color)	4294068355 (0xFFFF24883)
YUV	129.5560, 0.7119, 98.6134
Hunter-Lab	50.1504, 65.4003, 6.6614

Details

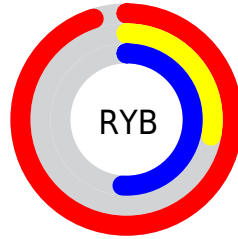
The Android color **4294068355** is a light color, and the websafe version is hex **FF6699**. The color can be described as light washed rose. A complement of this color would be **4282970807**, and the grayscale version is **4286677377**.

A 20% lighter version of the original color is **4294935736**, and **4289986642** is the 20% darker color. If you saturate the color by 10%, you get **4294062195**, and if you desaturate by 10%, it is **4294074515**.

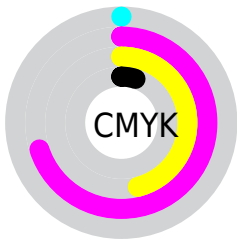
Distribution



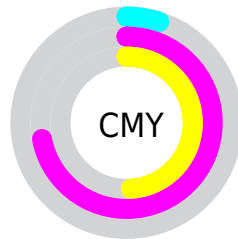
- Red (95%)
- Green (28%)
- Blue (51%)



- Red (95%)
- Yellow (28%)
- Blue (51%)



- Cyan (0%)
- Magenta (70%)
- Yellow (46%)
- Black (5%)



- Cyan (5%)
- Magenta (72%)
- Yellow (49%)

Brightness & Saturation Gradients

These gradients show how the Android color 4294068355 changes by changing the brightness by 10 percent. The first figure shows a shift by +10% for each color and the second figure -10%.

Similar to the brightness gradients but the following saturation gradients show a change of the Android color 4294068355 by changing the saturation by 10% instead.



4294068355



4294068355

4294967295



4292027754



4294935736



4289986642



4294943187



4288020539



4294950640



4286054438



4294958079



4284088337



4294965759



4282253315



4279894017



4278190080



4294068355



4294068355

 4294062195

 4294074515

 4294056035

 4294080675

 4294049876

 4294087090

 4294093250

 4294099410

 4294105570

 4294111730

 4294115327

Harmonies

Analogous

The Analogous color harmony consists of three colors that are next to each other on the color wheel.



4292303038



4294068355



4293678921

Triad

The Triadic color harmony groups three colors that are evenly spaced from another and form a triangle on the color wheel.



4294068355



4284389651



4278230517

Complementary

The Complementary color scheme is a pair of colors which are on the opposite of each other on the color wheel.



4294068355



4282970807

Split Complementary

Split-complementary colors differ from the complementary color scheme. The scheme consists of three colors, the original color and two neighbors of the complement color.



4278232268



4294068355



4278231379

Square

The Square scheme is like the rectangle color scheme, but the four colors are evenly spaced on the color wheel.



4294068355



4288514560



4278232209



4278226687

Rectangle

The Rectangle color scheme consists of four colors that form a rectangle on the color wheel.



4294068355



4292438565



4278232209



4278231274

Sweetspot

The Sweet Spot groups the original color and five complimentary colors.



4294068355



4294953436



4290201842



4286603371



4278190080



4286611584

Same Dimension

The Same Dimension uses a secret algorithm to generate beautiful new colors.



4294068355



4294912371



4294074952



4286082160



4290248768



4281860115

Inverse Universe

The Inverse Universe completely reimagines the original color for something new.



4294068355



4294912371



4282964210



4286082160



4290248768



4281860115

Previews

White Background



This preview shows how the Android color 4294068355 looks on a white background.

Color Contrast Check

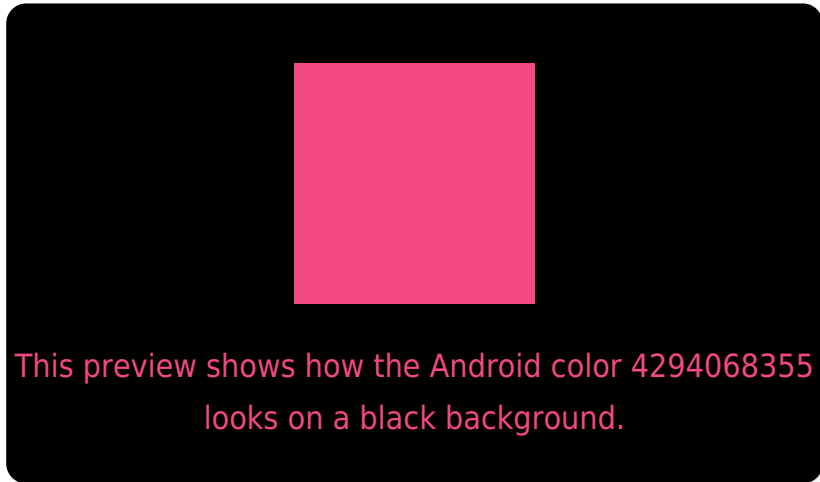
Large Text (above 18pt) WCAG AA ✓ Pass

Any Text WCAG AA ✗ Fail

Large Text (above 18pt) WCAG AAA ✗ Fail

Any Text WCAG AAA ✗ Fail

Black Background



Color Contrast Check

Large Text (above 18pt) WCAG AA ✓ Pass

Any Text WCAG AA ✓ Pass

Large Text (above 18pt) WCAG AAA ✓ Pass

Any Text WCAG AAA × Fail

If you want to check with other color combinations, try the [Color Contrast Checker](#).

Android 4294068355 Background



This preview shows how black text looks on a background with the Android color 4294068355.



This preview shows how white text looks on a background with the Android color 4294068355.

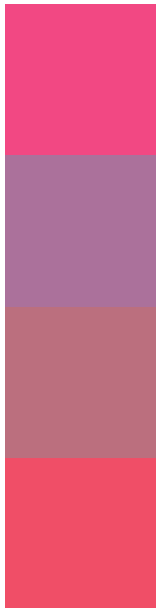
Color Blindness Simulation

Color vision deficiency is a very complex topic, and I could not describe the different causes any better than Wikipedia does, so if you want to learn more, you should check out their [article about color blindness](#).

Dichromacy



Trichromacy



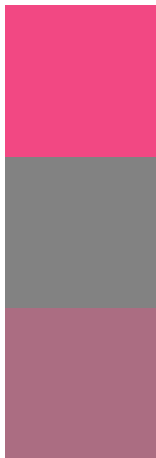
Original Color
4294068355

Protanomaly
4289425819

Deuteranomaly
4290473854

Tritanomaly
4293938791

Monochromacy



Original Color
4294068355

Achromatopsia
4286743170

Achromatomaly
4289424770

CSS Examples

Text

The CSS property to change the color of the text to Android 4294068355 is called "color". The color property can be set on classes, ids or directly on the HTML element.

This example shows how text in the color `rgb(242, 72, 131)` looks like.

```
.text, #text, p{  
    color:rgb(242, 72, 131)  
}
```

If you want to add a text shadow in that color use the text-shadow property, you can generate a text shadow directly with our [CSS Text Shadow Generator](#).

Here you see how black text with a 4 pixel rgb(242, 72, 131) colored shadow looks like.

```
.shadow{ text-shadow: 4px 4px 2px rgb(242, 72, 131) }
```

Border

The CSS property to change the border of an element to Android 4294068355 is called "border". The border property can be set on classes, ids or directly on the HTML element.

This example shows the color as border, it can be applied via the CSS property "border" or "border-color".

```
.border, #border, table{ border:4px solid rgb(242, 72, 131) }
```

If only the border color should be changed use the property `border-color`.

```
.border{ border-color:rgb(242, 72, 131) }
```

If you want to add a box shadow in that color use:

Here you see how a box with a 4 pixel `rgb(242, 72, 131)` colored shadow looks like.

```
.boxshadow{ -moz-box-shadow:4px 4px 4px  
4px rgb(242, 72, 131); -webkit-box-  
shadow:4px 4px 4px 4px rgb(242, 72, 131);  
box-shadow:4px 4px 4px 4px rgb(242, 72,  
131) }
```

Background

The CSS property to change the background color of an element to Android 4294068355 is called "background". The background property can be set on classes, ids or directly on the HTML element.

```
.background, #background, body{  
background: rgb(242, 72, 131) }
```

If only the background color should be changed can be used:

```
.background{ background-color: rgb(242, 72,  
131) }
```

This example shows the color as background, it is applied via the CSS property "background".

To optimize and compress your CSS code, you can use our [online CSS compressor and optimizer](#) based on csstidy. If you want to create a linear or radial gradient as background or border, check our [CSS Gradient Generator](#).

Hey! You found this booklet interesting? Support Converting Colors with the new Membership Option!

The pro membership hides all ads, plus gives you double the colors in the color bucket, and more awesome pro features!

[Learn more, Memberships starting at \\$2.50/m!](#)

**Follow me
on Twitter!**

@ConvertingColor