

Converting Colors

Android(4294068598)

Have a look what the booklet for
Android(4294068598) contains.

Android(4294068598)	3
<i>Conversions</i>	4
<i>Details</i>	6
<i>Harmonies</i>	11
<i>Previews</i>	23
<i>Color Blindness Simulation</i>	26
<i>CSS Examples</i>	29

Color

Android(4294068598)

Conversions

Conversions Part 1

Format	Color
Hex	F24976
RGB	242, 73, 118
RGB Percent	95%, 29%, 46%
CMY	0.0510, 0.7137, 0.5373
CMYK	0.00, 0.70, 0.51, 0.05
HSL	344°, 87%, 62%
HSV	344°, 70%, 95%
XYZ	42.2705, 24.9503, 19.7275
YIQ	128.6610, 86.2790, 49.8230

Conversions

Conversions Part 2

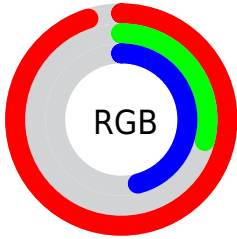
Format	Color
RYB	242, 73, 118
Decimal	15878518
CIELab	57.03, 66.88, 12.74
CIElCh	57, 68.084, 10.783
Yxy	24.9503, 0.4862, 0.2870
Android (android.graphics.Color)	4294068598 (0xFFFF24976)
YUV	128.6610, -5.2559, 99.3983
Hunter-Lab	49.9503, 63.6428, 11.5490

Details

The Android color **4294068598** is a dark color, and the websafe version is hex **CC3366**. The color can be described as middle washed rose. A complement of this color would be **4283036357**, and the grayscale version is **4286677377**.

A 20% lighter version of the original color is **4294935722**, and **4289986630** is the 20% darker color. If you saturate the color by 10%, you get **4294062436**, and if you desaturate by 10%, it is **4294074760**.

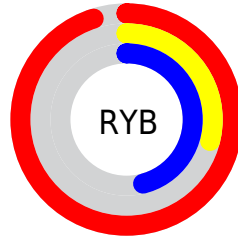
Distribution



Red (95%)

Green (29%)

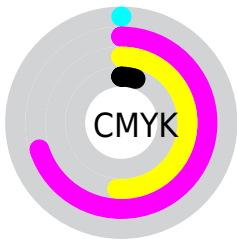
Blue (46%)



Red (95%)

Yellow (29%)

Blue (46%)

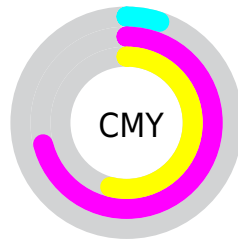


Cyan (0%)

Magenta (70%)

Yellow (51%)

Black (5%)



Cyan (5%)

Magenta (71%)

Yellow (54%)

Brightness & Saturation Gradients

These gradients show how the Android color 4294068598 changes by changing the brightness by 10 percent. The first figure shows a shift by +10% for each color and the second figure -10%.

Similar to the brightness gradients but the following saturation gradients show a change of the Android color 4294068598 by changing the saturation by 10% instead.



4294068598



4294068598

4294967295



4292028254



4294935722



4289986630



4294943173



4287954992



4294950625



4285988892



4294958334



4284022785



4294966015



4282122243



4279697408



4278190080



4294068598



4294068598

 4294062436

 4294074760

 4294056274

 4294080922

 4294049857

 4294087339

 4294049856

 4294093501

 4294099663

 4294105825

 4294111986

 4294115327

Harmonies

Analogous

The Analogous color harmony consists of three colors that are next to each other on the color wheel.



4292825777



4294068598



4293287230

Triad

The Triadic color harmony groups three colors that are evenly spaced from another and form a triangle on the color wheel.



4294068598



4283275811



4278229753

Complementary

The Complementary color scheme is a pair of colors which are on the opposite of each other on the color wheel.



4294068598



4283036357

Split Complementary

Split-complementary colors differ from the complementary color scheme. The scheme consists of three colors, the original color and two neighbors of the complement color.



4278231765



4294068598



4278231391

Square

The Square scheme is like the rectangle color scheme, but the four colors are evenly spaced on the color wheel.



4294068598



4287728896



4278232221



4278225406

Rectangle

The Rectangle color scheme consists of four colors that form a rectangle on the color wheel.



4294068598



4291915544



4278232221



4278230768

Sweetspot

The Sweet Spot groups the original color and five complimentary colors.



4294068598



4294953432



4291119602



4286603368



4278190080



4286611584

Same Dimension

The Same Dimension uses a secret algorithm to generate beautiful new colors.



4294068598



4294912354



4294078537



4286082159



4290248753



4281860111

Inverse Universe

The Inverse Universe completely reimagines the original color for something new.



4294068598



4294912354



4283026418



4286082159



4290248753



4281860111

Previews

White Background



This preview shows how the Android color 4294068598 looks on a white background.

Color Contrast Check

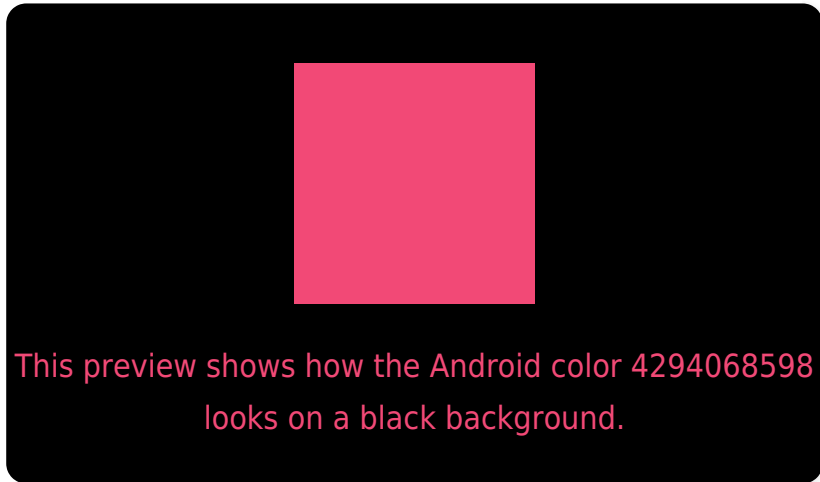
Large Text (above 18pt) WCAG AA ✓ Pass

Any Text WCAG AA ✗ Fail

Large Text (above 18pt) WCAG AAA ✗ Fail

Any Text WCAG AAA ✗ Fail

Black Background



Color Contrast Check

Large Text (above 18pt) WCAG AA ✓ Pass

Any Text WCAG AA ✓ Pass

Large Text (above 18pt) WCAG AAA ✓ Pass

Any Text WCAG AAA × Fail

If you want to check with other color combinations, try the [Color Contrast Checker](#).

Android 4294068598 Background



This preview shows how black text looks on a background with the Android color 4294068598.



This preview shows how white text looks on a background with the Android color 4294068598.

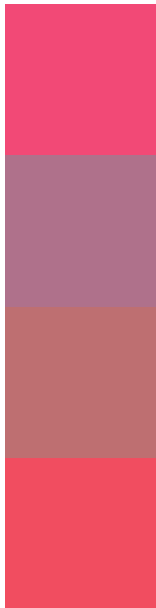
Color Blindness Simulation

Color vision deficiency is a very complex topic, and I could not describe the different causes any better than Wikipedia does, so if you want to learn more, you should check out their [article about color blindness](#).

Dichromacy



Trichromacy



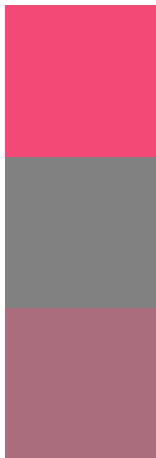
Original Color
4294068598

Protanomaly
4289687947

Deuteranomaly
4290670449

Tritanomaly
4294004064

Monochromacy



Original Color
4294068598

Achromatopsia
4286677377

Achromatomaly
4289359229

CSS Examples

Text

The CSS property to change the color of the text to Android 4294068598 is called "color". The color property can be set on classes, ids or directly on the HTML element.

This example shows how text in the color `rgb(242, 73, 118)` looks like.

```
.text, #text, p{  
    color:rgb(242, 73, 118)  
}
```

If you want to add a text shadow in that color use the text-shadow property, you can generate a text shadow directly with our [CSS Text Shadow Generator](#).

Here you see how black text with a 4 pixel rgb(242, 73, 118) colored shadow looks like.

```
.shadow{ text-shadow: 4px 4px 2px rgb(242, 73, 118) }
```

Border

The CSS property to change the border of an element to Android 4294068598 is called "border". The border property can be set on classes, ids or directly on the HTML element.

This example shows the color as border, it can be applied via the CSS property "border" or "border-color".

```
.border, #border, table{ border:4px solid rgb(242, 73, 118) }
```

If only the border color should be changed use the property `border-color`.

```
.border{ border-color:rgb(242, 73, 118) }
```

If you want to add a box shadow in that color use:

Here you see how a box with a 4 pixel `rgb(242, 73, 118)` colored shadow looks like.

```
.boxshadow{ -moz-box-shadow:4px 4px 4px 4px rgb(242, 73, 118); -webkit-box-shadow:4px 4px 4px 4px rgb(242, 73, 118); box-shadow:4px 4px 4px 4px rgb(242, 73, 118) }
```

Background

The CSS property to change the background color of an element to Android 4294068598 is called "background". The background property can be set on classes, ids or directly on the HTML element.

```
.background, #background, body{  
background: rgb(242, 73, 118) }
```

If only the background color should be changed can be used:

```
.background{ background-color: rgb(242, 73,  
118) }
```

This example shows the color as background, it is applied via the CSS property "background".

To optimize and compress your CSS code, you can use our [online CSS compressor and optimizer](#) based on csstidy. If you want to create a linear or radial gradient as background or border, check our [CSS Gradient Generator](#).

Hey! You found this booklet interesting? Support Converting Colors with the new Membership Option!

The pro membership hides all ads, plus gives you double the colors in the color bucket, and more awesome pro features!

[Learn more, Memberships starting at \\$2.50/m!](#)

**Follow me
on Twitter!**

@ConvertingColor