

Converting Colors

Android(4294074752)

Have a look what the booklet for
Android(4294074752) contains.

Android(4294074752)	3
<i>Conversions</i>	4
<i>Details</i>	6
<i>Harmonies</i>	11
<i>Previews</i>	23
<i>Color Blindness Simulation</i>	26
<i>CSS Examples</i>	29

Color

Android(4294074752)

Conversions

Conversions Part 1

Format	Color
Hex	F26180
RGB	242, 97, 128
RGB Percent	95%, 38%, 50%
CMY	0.0510, 0.6196, 0.4980
CMYK	0.00, 0.60, 0.47, 0.05
HSL	347°, 85%, 66%
HSV	347°, 60%, 95%
XYZ	44.7889, 28.9851, 23.6561
YIQ	143.8890, 76.4690, 40.3810

Conversions

Conversions Part 2

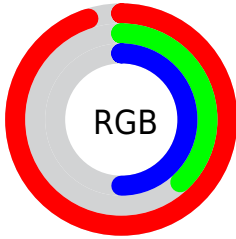
Format	Color
R_{YB}	242, 97, 128
Decimal	15884672
CIE _{Lab}	60.77, 58.19, 12.13
CIE _{LCh}	61, 59.439, 11.772
Yxy	28.9851, 0.4597, 0.2975
Android (android.graphics.Color)	4294074752 (0xFFFF26180)
YUV	143.8890, -7.8333, 86.0433
Hunter-Lab	53.8379, 54.2819, 11.6347

Details

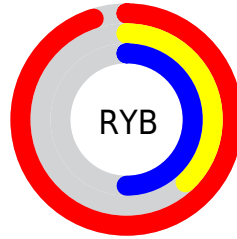
The Android color **4294074752** is a light color, and the websafe version is hex **FF6699**. A complement of this color would be **4284609235**, and the grayscale version is **4287664272**.

A 20% lighter version of the original color is **4294941109**, and **4290061647** is the 20% darker color. If you saturate the color by 10%, you get **4294068589**, and if you desaturate by 10%, it is **4294080915**.

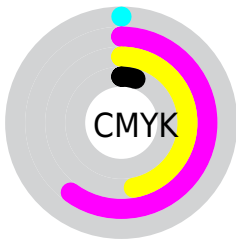
Distribution



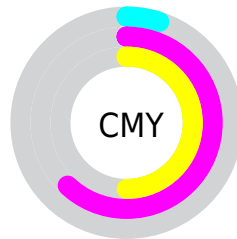
- Red (95%)
- Green (38%)
- Blue (50%)



- Red (95%)
- Yellow (38%)
- Blue (50%)



- Cyan (0%)
- Magenta (60%)
- Yellow (47%)
- Black (5%)



- Cyan (5%)
- Magenta (62%)
- Yellow (50%)

Brightness & Saturation Gradients

These gradients show how the Android color 4294074752 changes by changing the brightness by 10 percent. The first figure shows a shift by +10% for each color and the second figure -10%.

Similar to the brightness gradients but the following saturation gradients show a change of the Android color 4294074752 by changing the saturation by 10% instead.

 4294074752

 4294074752

4294967295

 4292035943

 4294941109

 4290061647

 4294948560

 4288086073

 4294955756

 4286119971

 4294963455

 4284219406

 4282449923

 4280287233

 4278190080

 4294074752

 4294074752

 4294068589

 4294080915

 4294062426

 4294087078

 4294056007

 4294093497

 4294049844

 4294099660

 4294105823

 4294111986

 4294115327

Harmonies

Analogous

The Analogous color harmony consists of three colors that are next to each other on the color wheel.



4292962229



4294074752



4293357391

Triad

The Triadic color harmony groups three colors that are evenly spaced from another and form a triangle on the color wheel.



4294074752



4284523327



4278231542

Complementary

The Complementary color scheme is a pair of colors which are on the opposite of each other on the color wheel.



4294074752



4284609235

Split Complementary

Split-complementary colors differ from the complementary color scheme. The scheme consists of three colors, the original color and two neighbors of the complement color.



4278233559



4294074752



4278233712

Square

The Square scheme is like the rectangle color scheme, but the four colors are evenly spaced on the color wheel.



4294074752



4288321310



4278234278



4283470586

Rectangle

The Rectangle color scheme consists of four colors that form a rectangle on the color wheel.



4294074752



4292115764



4278234278



4278232559

Sweetspot

The Sweet Spot groups the original color and five complimentary colors.



4294074752



4294955483



4292043250



4286604137



4278190080



4286611584

Same Dimension

The Same Dimension uses a secret algorithm to generate beautiful new colors.



4294074752



4294920047



4294085217



4286082158



4290248743



4281860108

Inverse Universe

The Inverse Universe completely reimagines the original color for something new.



4294074752



4294920047



4284598770



4286082158



4290248743



4281860108

Previews

White Background



This preview shows how the Android color 4294074752 looks on a white background.

Color Contrast Check

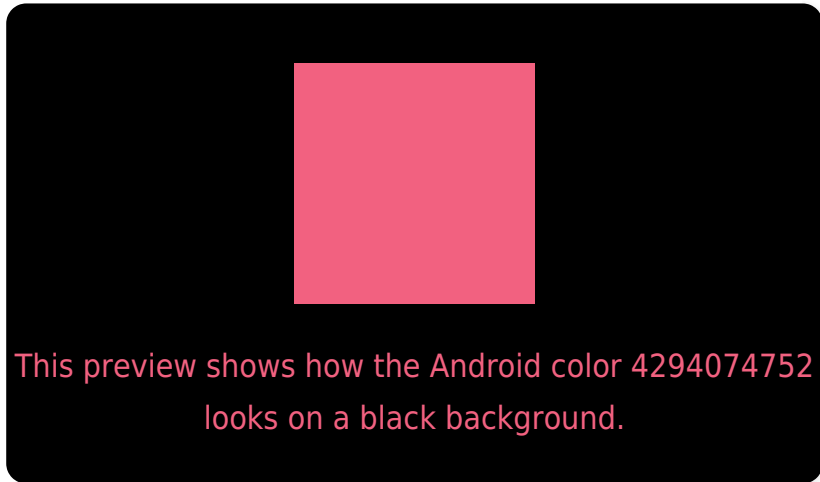
Large Text (above 18pt) WCAG AA ✓ Pass

Any Text WCAG AA ✗ Fail

Large Text (above 18pt) WCAG AAA ✗ Fail

Any Text WCAG AAA ✗ Fail

Black Background



Color Contrast Check

Large Text (above 18pt) WCAG AA ✓ Pass

Any Text WCAG AA ✓ Pass

Large Text (above 18pt) WCAG AAA ✓ Pass

Any Text WCAG AAA × Fail

If you want to check with other color combinations, try the [Color Contrast Checker](#).

Android 4294074752 Background



This preview shows how black text looks on a background with the Android color 4294074752.



This preview shows how white text looks on a background with the Android color 4294074752.

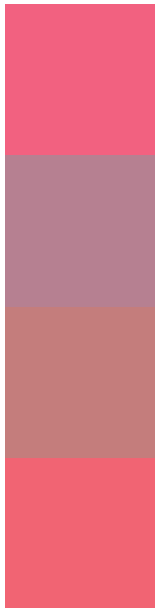
Color Blindness Simulation

Color vision deficiency is a very complex topic, and I could not describe the different causes any better than Wikipedia does, so if you want to learn more, you should check out their [article about color blindness](#).

Dichromacy



Trichromacy



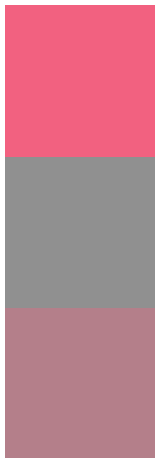
Original Color
4294074752

Protanomaly
4290150545

Deuteranomaly
4291067260

Tritanomaly
4294009971

Monochromacy



Original Color
4294074752

Achromatopsia
4287664272

Achromatomaly
4290019210

CSS Examples

Text

The CSS property to change the color of the text to Android 4294074752 is called "color". The color property can be set on classes, ids or directly on the HTML element.

This example shows how text in the color `rgb(242, 97, 128)` looks like.

```
.text, #text, p{  
    color:rgb(242, 97, 128)  
}
```

If you want to add a text shadow in that color use the text-shadow property, you can generate a text shadow directly with our [CSS Text Shadow Generator](#).

Here you see how black text with a 4 pixel rgb(242, 97, 128) colored shadow looks like.

```
.shadow{ text-shadow: 4px 4px 2px rgb(242, 97, 128) }
```

Border

The CSS property to change the border of an element to Android 4294074752 is called "border". The border property can be set on classes, ids or directly on the HTML element.

This example shows the color as border, it can be applied via the CSS property "border" or "border-color".

```
.border, #border, table{ border:4px solid rgb(242, 97, 128) }
```

If only the border color should be changed use the property border-color.

```
.border{ border-color:rgb(242, 97, 128) }
```

If you want to add a box shadow in that color use:

Here you see how a box with a 4 pixel rgb(242, 97, 128) colored shadow looks like.

```
.boxshadow{ -moz-box-shadow:4px 4px 4px  
4px rgb(242, 97, 128); -webkit-box-  
shadow:4px 4px 4px 4px rgb(242, 97, 128);  
box-shadow:4px 4px 4px 4px rgb(242, 97,  
128) }
```

Background

The CSS property to change the background color of an element to Android 4294074752 is called "background". The background property can be set on classes, ids or directly on the HTML element.

```
.background, #background, body{  
background: rgb(242, 97, 128) }
```

If only the background color should be changed can be used:

```
.background{ background-color: rgb(242, 97,  
128) }
```

This example shows the color as background, it is applied via the CSS property "background".

To optimize and compress your CSS code, you can use our [online CSS compressor and optimizer](#) based on csstidy. If you want to create a linear or radial gradient as background or border, check our [CSS Gradient Generator](#).

Hey! You found this booklet interesting? Support Converting Colors with the new Membership Option!

The pro membership hides all ads, plus gives you double the colors in the color bucket, and more awesome pro features!

[Learn more, Memberships starting at \\$2.50/m!](#)

**Follow me
on Twitter!**

@ConvertingColor