

Converting Colors

Android(4294075797)

Have a look what the booklet for
Android(4294075797) contains.

Android(4294075797)	3
<i>Conversions</i>	4
<i>Details</i>	6
<i>Harmonies</i>	11
<i>Previews</i>	23
<i>Color Blindness Simulation</i>	26
<i>CSS Examples</i>	29

Color

Android(4294075797)

Conversions

Conversions Part 1

Format	Color
Hex	F26595
RGB	242, 101, 149
RGB Percent	95%, 40%, 58%
CMY	0.0510, 0.6039, 0.4157
CMYK	0.00, 0.58, 0.38, 0.05
HSL	340°, 84%, 67%
HSV	340°, 58%, 95%
XYZ	46.6964, 30.3545, 31.8316
YIQ	148.6310, 68.6280, 44.8200

Conversions

Conversions Part 2

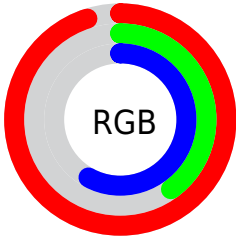
Format	Color
R_{YB}	242, 101, 149
Decimal	15885717
CIE _{Lab}	61.96, 58.50, 1.67
CIE _{LCh}	62, 58.529, 1.639
Yxy	30.3545, 0.4289, 0.2788
Android (android.graphics.Color)	4294075797 (0xFFFF26595)
YUV	148.6310, 0.1819, 81.8846
Hunter-Lab	55.0949, 54.8739, 4.3111

Details

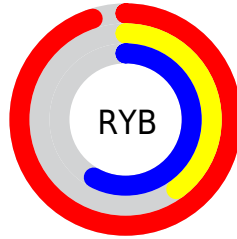
The Android color **4294075797** is a light color, and the websafe version is hex **FF6699**. A complement of this color would be **4284871362**, and the grayscale version is **4287993237**.

A 20% lighter version of the original color is **4294942155**, and **4290128482** is the 20% darker color. If you saturate the color by 10%, you get **4294069637**, and if you desaturate by 10%, it is **4294081957**.

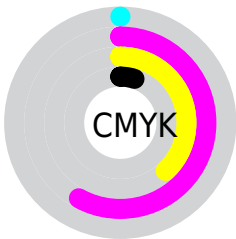
Distribution



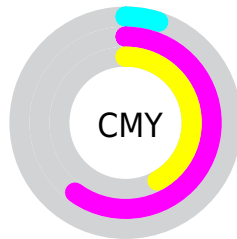
- Red (95%)
- Green (40%)
- Blue (58%)



- Red (95%)
- Yellow (40%)
- Blue (58%)



- Cyan (0%)
- Magenta (58%)
- Yellow (38%)
- Black (5%)



- Cyan (5%)
- Magenta (60%)
- Yellow (42%)

Brightness & Saturation Gradients

These gradients show how the Android color 4294075797 changes by changing the brightness by 10 percent. The first figure shows a shift by +10% for each color and the second figure -10%.

Similar to the brightness gradients but the following saturation gradients show a change of the Android color 4294075797 by changing the saturation by 10% instead.



4294075797



4294075797

4294967295



4292102523



4294942155



4290128482



4294949607



4288151627



4294957055



4286251060



4294964479



4284350495



4282646534



4280614913



4278190080



4294075797



4294075797

 4294069637

 4294081957

 4294063477

 4294088117

 4294057061

 4294094533

 4294050901

 4294100693

 4294049874

 4294106853

 4294113013

 4294115327

Harmonies

Analogous

The Analogous color harmony consists of three colors that are next to each other on the color wheel.



4292309448



4294075797



4293946722

Triad

The Triadic color harmony groups three colors that are evenly spaced from another and form a triangle on the color wheel.



4294075797



4286226998



4278233328

Complementary

The Complementary color scheme is a pair of colors which are on the opposite of each other on the color wheel.



4294075797



4284871362

Split Complementary

Split-complementary colors differ from the complementary color scheme. The scheme consists of three colors, the original color and two neighbors of the complement color.



4278234827



4294075797



4280658786

Square

The Square scheme is like the rectangle color scheme, but the four colors are evenly spaced on the color wheel.



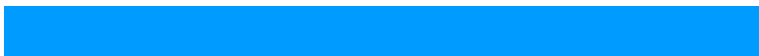
4294075797



4289631267



4278235031



4278230014

Rectangle

The Rectangle color scheme consists of four colors that form a rectangle on the color wheel.



4294075797



4293032517



4278235031



4278233830

Sweetspot

The Sweet Spot groups the original color and five complimentary colors.



4294075797



4294956258



4290864626



4286604911



4278190080



4286611584

Same Dimension

The Same Dimension uses a secret algorithm to generate beautiful new colors.



4294075797



4294921609



4294081125



4286082160



4290248767



4281860115

Inverse Universe

The Inverse Universe completely reimagines the original color for something new.



4294075797



4294921609



4284866034



4286082160



4290248767



4281860115

Previews

White Background



This preview shows how the Android color 4294075797 looks on a white background.

Color Contrast Check

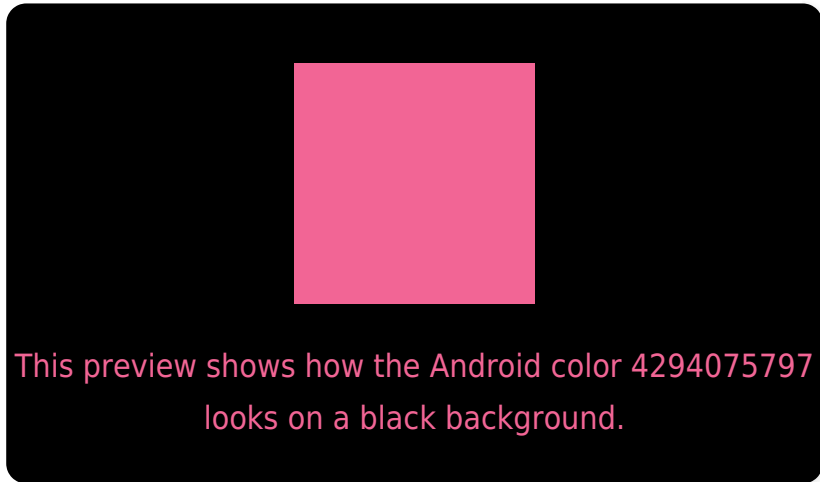
Large Text (above 18pt) WCAG AA × Fail

Any Text WCAG AA × Fail

Large Text (above 18pt) WCAG AAA × Fail

Any Text WCAG AAA × Fail

Black Background



Color Contrast Check

Large Text (above 18pt) WCAG AA ✓ Pass

Any Text WCAG AA ✓ Pass

Large Text (above 18pt) WCAG AAA ✓ Pass

Any Text WCAG AAA ✓ Pass

If you want to check with other color combinations, try the [Color Contrast Checker](#).

Android 4294075797 Background



This preview shows how black text looks on a background with the Android color 4294075797.



This preview shows how white text looks on a background with the Android color 4294075797.

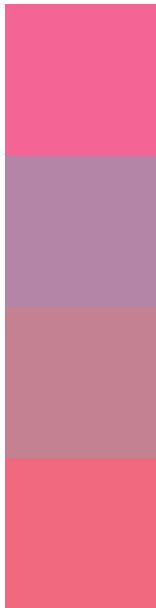
Color Blindness Simulation

Color vision deficiency is a very complex topic, and I could not describe the different causes any better than Wikipedia does, so if you want to learn more, you should check out their [article about color blindness](#).

Dichromacy



Trichromacy



Original Color
4294075797

Protanomaly
4290020519

Deuteranomaly
4291002769

Tritanomaly
4293945727

Monochromacy



Original Color
4294075797

Achromatopsia
4287993237

Achromatomaly
4290217109

CSS Examples

Text

The CSS property to change the color of the text to Android 4294075797 is called "color". The color property can be set on classes, ids or directly on the HTML element.

This example shows how text in the color `rgb(242, 101, 149)` looks like.

```
.text, #text, p{  
    color:rgb(242, 101, 149)  
}
```

If you want to add a text shadow in that color use the text-shadow property, you can generate a text shadow directly with our [CSS Text Shadow Generator](#).

Here you see how black text with a 4 pixel rgb(242, 101, 149) colored shadow looks like.

```
.shadow{ text-shadow: 4px 4px 2px rgb(242, 101, 149) }
```

Border

The CSS property to change the border of an element to Android 4294075797 is called "border". The border property can be set on classes, ids or directly on the HTML element.

This example shows the color as border, it can be applied via the CSS property "border" or "border-color".

```
.border, #border, table{ border:4px solid rgb(242, 101, 149) }
```

If only the border color should be changed use the property `border-color`.

```
.border{ border-color:rgb(242, 101, 149) }
```

If you want to add a box shadow in that color use:

Here you see how a box with a 4 pixel `rgb(242, 101, 149)` colored shadow looks like.

```
.boxshadow{ -moz-box-shadow:4px 4px 4px  
4px rgb(242, 101, 149); -webkit-box-  
shadow:4px 4px 4px 4px rgb(242, 101, 149);  
box-shadow:4px 4px 4px 4px rgb(242, 101,  
149) }
```

Background

The CSS property to change the background color of an element to Android 4294075797 is called "background". The background property can be set on classes, ids or directly on the HTML element.

```
.background, #background, body{  
background: rgb(242, 101, 149) }
```

If only the background color should be changed can be used:

```
.background{ background-color: rgb(242,  
101, 149) }
```

This example shows the color as background, it is applied via the CSS property "background".

To optimize and compress your CSS code, you can use our [online CSS compressor and optimizer](#) based on csstidy. If you want to create a linear or radial gradient as background or border, check our [CSS Gradient Generator](#).

Hey! You found this booklet interesting? Support Converting Colors with the new Membership Option!

The pro membership hides all ads, plus gives you double the colors in the color bucket, and more awesome pro features!

[Learn more, Memberships starting at \\$2.50/m!](#)

**Follow me
on Twitter!**

@ConvertingColor