

Converting Colors

Android(4294076288)

Have a look what the booklet for
Android(4294076288) contains.

Android(4294076288)	3
<i>Conversions</i>	4
<i>Details</i>	6
<i>Harmonies</i>	11
<i>Previews</i>	23
<i>Color Blindness Simulation</i>	26
<i>CSS Examples</i>	29

Color

Android(4294076288)

Conversions

Conversions Part 1

Format	Color
Hex	F26780
RGB	242, 103, 128
RGB Percent	95%, 40%, 50%
CMY	0.0510, 0.5961, 0.4980
CMYK	0.00, 0.57, 0.47, 0.05
HSL	349°, 84%, 68%
HSV	349°, 57%, 95%
XYZ	45.3645, 30.1363, 23.8480
YIQ	147.4110, 74.8190, 37.2430

Conversions

Conversions Part 2

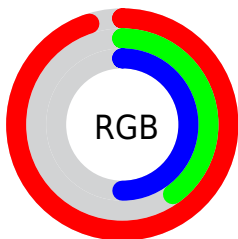
Format	Color
R _Y B	242, 103, 128
Decimal	15886208
CIE Lab	61.77, 55.52, 13.53
CIE LCh	62, 57.150, 13.696
Yxy	30.1363, 0.4566, 0.3033
Android (android.graphics.Color)	4294076288 (0xFFFF26780)
YUV	147.4110, -9.5696, 82.9546
Hunter-Lab	54.8965, 51.4371, 12.6710

Details

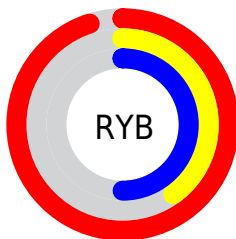
The Android color **4294076288** is a light color, and the websafe version is hex **FF6699**. A complement of this color would be **4285002457**, and the grayscale version is **4287861651**.

A 20% lighter version of the original color is **4294942645**, and **4290063951** is the 20% darker color. If you saturate the color by 10%, you get **4294070124**, and if you desaturate by 10%, it is **4294082452**.

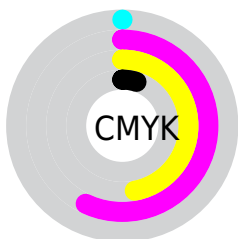
Distribution



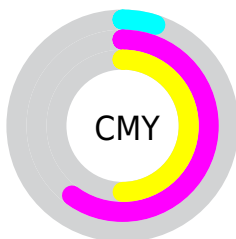
- Red (95%)
- Green (40%)
- Blue (50%)



- Red (95%)
- Yellow (40%)
- Blue (50%)



- Cyan (0%)
- Magenta (57%)
- Yellow (47%)
- Black (5%)



- Cyan (5%)
- Magenta (60%)
- Yellow (50%)

Brightness & Saturation Gradients

These gradients show how the Android color 4294076288 changes by changing the brightness by 10 percent. The first figure shows a shift by +10% for each color and the second figure -10%.

Similar to the brightness gradients but the following saturation gradients show a change of the Android color 4294076288 by changing the saturation by 10% instead.

 4294076288

 4294076288

4294967295

 4292037479

 4294942645

 4290063951

 4294949840

 4288087097

 4294957292

 4286185507

 4294964735

 4284284942

 4282515458

 4280418305

 4278190080

 4294076288

 4294076288

 4294070124

 4294082452

 4294063960

 4294088616

 4294057540

 4294095036

 4294051377

 4294101199

 4294049836

 4294107363

 4294113527

 4294115327

Harmonies

Analogous

The Analogous color harmony consists of three colors that are next to each other on the color wheel.



4293094323



4294076288



4293293393

Triad

The Triadic color harmony groups three colors that are evenly spaced from another and form a triangle on the color wheel.



4294076288



4284589640



4278232054

Complementary

The Complementary color scheme is a pair of colors which are on the opposite of each other on the color wheel.



4294076288



4285002457

Split Complementary

Split-complementary colors differ from the complementary color scheme. The scheme consists of three colors, the original color and two neighbors of the complement color.



4278234074



4294076288



4278234231

Square

The Square scheme is like the rectangle color scheme, but the four colors are evenly spaced on the color wheel.



4294076288



4288322089



4278234796



4284584952

Rectangle

The Rectangle color scheme consists of four colors that form a rectangle on the color wheel.



4294076288



4292051512



4278234796



4278232815

Sweetspot

The Sweet Spot groups the original color and five complimentary colors.



4294076288



4294956251



4292438002



4286604907



4278190080



4286611584

Same Dimension

The Same Dimension uses a secret algorithm to generate beautiful new colors.



4294076288



4294922095



4294087527



4286082158



4290248737



4281860106

Inverse Universe

The Inverse Universe completely reimagines the original color for something new.



4294076288



4294922095



4284991218



4286082158



4290248737



4281860106

Previews

White Background



This preview shows how the Android color 4294076288 looks on a white background.

Color Contrast Check

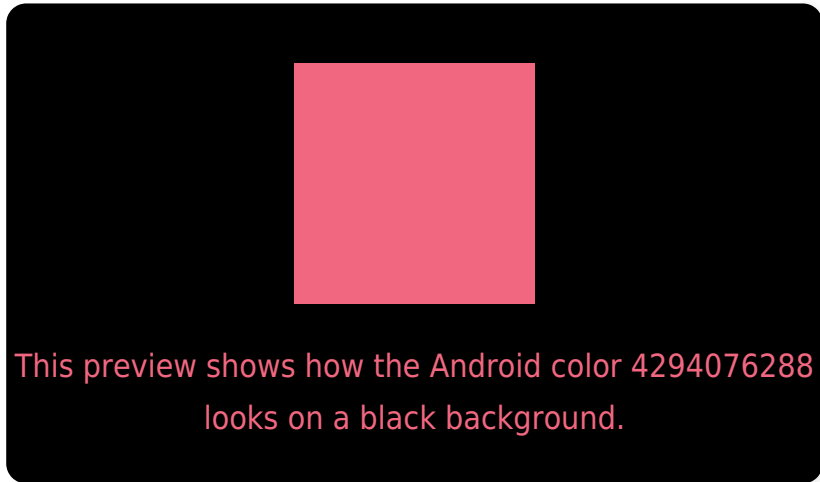
Large Text (above 18pt) WCAG AA × Fail

Any Text WCAG AA × Fail

Large Text (above 18pt) WCAG AAA × Fail

Any Text WCAG AAA × Fail

Black Background



Color Contrast Check

Large Text (above 18pt) WCAG AA ✓ Pass

Any Text WCAG AA ✓ Pass

Large Text (above 18pt) WCAG AAA ✓ Pass

Any Text WCAG AAA ✓ Pass

If you want to check with other color combinations, try the [Color Contrast Checker](#).

Android 4294076288 Background



This preview shows how black text looks on a background with the Android color 4294076288.



This preview shows how white text looks on a background with the Android color 4294076288.

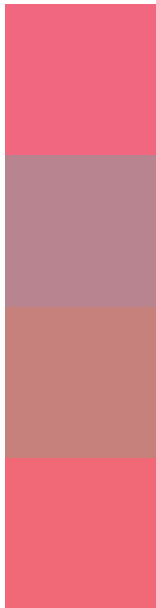
Color Blindness Simulation

Color vision deficiency is a very complex topic, and I could not describe the different causes any better than Wikipedia does, so if you want to learn more, you should check out their [article about color blindness](#).

Dichromacy



Trichromacy



Original Color
4294076288

Protanomaly
4290282639

Deuteranomaly
4291264892

Tritanomaly
4294011254

Monochromacy



Original Color
4294076288

Achromatopsia
4287861651

Achromatomaly
4290151308

CSS Examples

Text

The CSS property to change the color of the text to Android 4294076288 is called "color". The color property can be set on classes, ids or directly on the HTML element.

This example shows how text in the color `rgb(242, 103, 128)` looks like.

```
.text, #text, p{  
    color:rgb(242, 103, 128)  
}
```

If you want to add a text shadow in that color use the text-shadow property, you can generate a text shadow directly with our [CSS Text Shadow Generator](#).

Here you see how black text with a 4 pixel rgb(242, 103, 128) colored shadow looks like.

```
.shadow{ text-shadow: 4px 4px 2px rgb(242, 103, 128) }
```

Border

The CSS property to change the border of an element to Android 4294076288 is called "border". The border property can be set on classes, ids or directly on the HTML element.

This example shows the color as border, it can be applied via the CSS property "border" or "border-color".

```
.border, #border, table{ border:4px solid rgb(242, 103, 128) }
```

If only the border color should be changed use the property `border-color`.

```
.border{ border-color:rgb(242, 103, 128) }
```

If you want to add a box shadow in that color use:

Here you see how a box with a 4 pixel `rgb(242, 103, 128)` colored shadow looks like.

```
.boxshadow{ -moz-box-shadow:4px 4px 4px  
4px rgb(242, 103, 128); -webkit-box-  
shadow:4px 4px 4px 4px rgb(242, 103, 128);  
box-shadow:4px 4px 4px 4px rgb(242, 103,  
128) }
```

Background

The CSS property to change the background color of an element to Android 4294076288 is called "background". The background property can be set on classes, ids or directly on the HTML element.

```
.background, #background, body{  
background: rgb(242, 103, 128) }
```

If only the background color should be changed can be used:

```
.background{ background-color: rgb(242,  
103, 128) }
```

This example shows the color as background, it is applied via the CSS property "background".

To optimize and compress your CSS code, you can use our [online CSS compressor and optimizer](#) based on csstidy. If you want to create a linear or radial gradient as background or border, check our [CSS Gradient Generator](#).

Hey! You found this booklet interesting? Support Converting Colors with the new Membership Option!

The pro membership hides all ads, plus gives you double the colors in the color bucket, and more awesome pro features!

[Learn more, Memberships starting at \\$2.50/m!](#)

**Follow me
on Twitter!**

@ConvertingColor