

Converting Colors

Android(4294079364)

Have a look what the booklet for
Android(4294079364) contains.

Android(4294079364)	3
<i>Conversions</i>	4
<i>Details</i>	6
<i>Harmonies</i>	11
<i>Previews</i>	23
<i>Color Blindness Simulation</i>	26
<i>CSS Examples</i>	29

Color

Android(4294079364)

Conversions

Conversions Part 1

Format	Color
Hex	F27384
RGB	242, 115, 132
RGB Percent	95%, 45%, 52%
CMY	0.0510, 0.5490, 0.4824
CMYK	0.00, 0.52, 0.45, 0.05
HSL	352°, 83%, 70%
HSV	352°, 52%, 95%
XYZ	46.9135, 32.8047, 25.6891
YIQ	154.9110, 70.2350, 32.2110

Conversions

Conversions Part 2

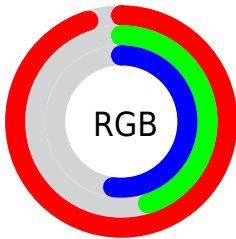
Format	Color
R _Y B	242, 115, 132
Decimal	15889284
CIE Lab	64.00, 50.31, 14.35
CIE LCh	64, 52.314, 15.923
Yxy	32.8047, 0.4451, 0.3112
Android (android.graphics.Color)	4294079364 (0xFFFF27384)
YUV	154.9110, -11.2951, 76.3771
Hunter-Lab	57.2753, 45.9753, 13.5000

Details

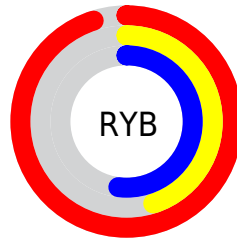
The Android color `4294079364` is a light color, and the websafe version is hex `CC6666`. A complement of this color would be `4285788897`, and the grayscale version is `4288387995`.

A 20% lighter version of the original color is `4294945465`, and `4290133331` is the 20% darker color. If you saturate the color by 10%, you get `4294073199`, and if you desaturate by 10%, it is `4294085529`.

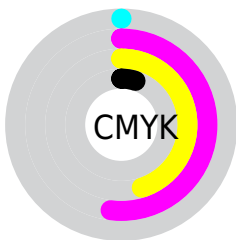
Distribution



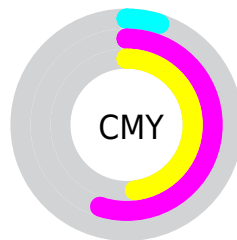
- Red (95%)
- Green (45%)
- Blue (52%)



- Red (95%)
- Yellow (45%)
- Blue (52%)



- Cyan (0%)
- Magenta (52%)
- Yellow (45%)
- Black (5%)



- Cyan (5%)
- Magenta (55%)
- Yellow (48%)

Brightness & Saturation Gradients

These gradients show how the Android color 4294079364 changes by changing the brightness by 10 percent. The first figure shows a shift by +10% for each color and the second figure -10%.

Similar to the brightness gradients but the following saturation gradients show a change of the Android color 4294079364 by changing the saturation by 10% instead.

 4294079364

 4294079364

4294967295

 4292106347

 4294945465

 4290133331

 4294952661

 4288159548

 4294960113

 4286251046

 4284350482

 4282580993

 4280680449

 4278190080

 4294079364

 4294079364

 4294073199

 4294085529

 4294067034

 4294091694

 4294060613

 4294098115

 4294054448

 4294104280

 4294049824

 4294110445

 4294115327

Harmonies

Analogous

The Analogous color harmony consists of three colors that are next to each other on the color wheel.



4293293491



4294079364



4293295962

Triad

The Triadic color harmony groups three colors that are evenly spaced from another and form a triangle on the color wheel.



4294079364



4285049687



4278232821

Complementary

The Complementary color scheme is a pair of colors which are on the opposite of each other on the color wheel.



4294079364



4285788897

Split Complementary

Split-complementary colors differ from the complementary color scheme. The scheme consists of three colors, the original color and two neighbors of the complement color.



4278235101



4294079364



4278235523

Square

The Square scheme is like the rectangle color scheme, but the four colors are evenly spaced on the color wheel.



4294079364



4288520252



4278235827



4286027765

Rectangle

The Rectangle color scheme consists of four colors that form a rectangle on the color wheel.



4294079364



4292119365



4278235827



4278233840

Sweetspot

The Sweet Spot groups the original color and five complimentary colors.



4294079364



4294956764



4292834290



4286605163



4278190080



4286611584

Same Dimension

The Same Dimension uses a secret algorithm to generate beautiful new colors.



4294079364



4294925940



4294090611



4286082157



4290248729



4281860104

Inverse Universe

The Inverse Universe completely reimagines the original color for something new.



4294079364



4294925940



4285777650



4286082157



4290248729



4281860104

Previews

White Background



This preview shows how the Android color 4294079364 looks on a white background.

Color Contrast Check

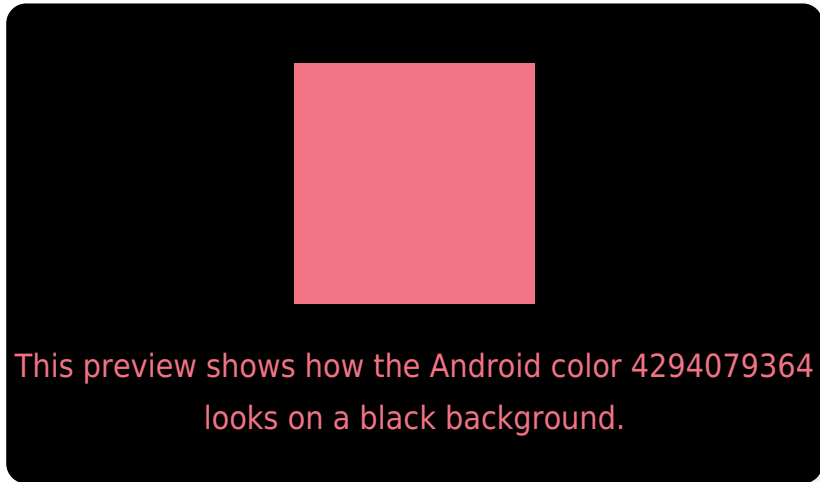
Large Text (above 18pt) WCAG AA × Fail

Any Text WCAG AA × Fail

Large Text (above 18pt) WCAG AAA × Fail

Any Text WCAG AAA × Fail

Black Background



Color Contrast Check

Large Text (above 18pt) WCAG AA ✓ Pass

Any Text WCAG AA ✓ Pass

Large Text (above 18pt) WCAG AAA ✓ Pass

Any Text WCAG AAA ✓ Pass

If you want to check with other color combinations, try the [Color Contrast Checker](#).

Android 4294079364 Background



This preview shows how black text looks on a background with the Android color 4294079364.

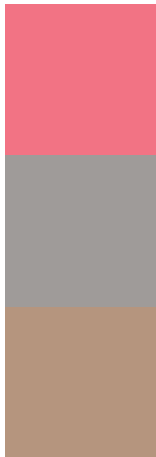


This preview shows how white text looks on a background with the Android color 4294079364.

Color Blindness Simulation

Color vision deficiency is a very complex topic, and I could not describe the different causes any better than Wikipedia does, so if you want to learn more, you should check out their [article about color blindness](#).

Dichromacy

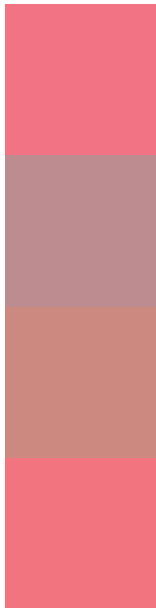


Original Color
4294079364

Protanopia
4288650137

Deuteranopia
4290090366

Trichromacy



Original Color
4294079364

Protanomaly
4290612369

Deuteranomaly
4291529088

Tritanomaly
4294014079

Monochromacy



Original Color
4294079364

Achromatopsia
4288387995

Achromatomaly
4290481299

CSS Examples

Text

The CSS property to change the color of the text to Android 4294079364 is called "color". The color property can be set on classes, ids or directly on the HTML element.

This example shows how text in the color `rgb(242, 115, 132)` looks like.

```
.text, #text, p{  
    color:rgb(242, 115, 132)  
}
```

If you want to add a text shadow in that color use the text-shadow property, you can generate a text shadow directly with our [CSS Text Shadow Generator](#).

Here you see how black text with a 4 pixel rgb(242, 115, 132) colored shadow looks like.

```
.shadow{ text-shadow: 4px 4px 2px rgb(242, 115, 132) }
```

Border

The CSS property to change the border of an element to Android 4294079364 is called "border". The border property can be set on classes, ids or directly on the HTML element.

This example shows the color as border, it can be applied via the CSS property "border" or "border-color".

```
.border, #border, table{ border:4px solid rgb(242, 115, 132) }
```

If only the border color should be changed use the property `border-color`.

```
.border{ border-color:rgb(242, 115, 132) }
```

If you want to add a box shadow in that color use:

Here you see how a box with a 4 pixel `rgb(242, 115, 132)` colored shadow looks like.

```
.boxshadow{ -moz-box-shadow:4px 4px 4px  
4px rgb(242, 115, 132); -webkit-box-  
shadow:4px 4px 4px 4px rgb(242, 115, 132);  
box-shadow:4px 4px 4px 4px rgb(242, 115,  
132) }
```

Background

The CSS property to change the background color of an element to Android 4294079364 is called "background". The background property can be set on classes, ids or directly on the HTML element.

```
.background, #background, body{  
background: rgb(242, 115, 132) }
```

If only the background color should be changed can be used:

```
.background{ background-color: rgb(242,  
115, 132) }
```

This example shows the color as background, it is applied via the CSS property "background".

To optimize and compress your CSS code, you can use our [online CSS compressor and optimizer](#) based on csstidy. If you want to create a linear or radial gradient as background or border, check our [CSS Gradient Generator](#).

Hey! You found this booklet interesting? Support Converting Colors with the new Membership Option!

The pro membership hides all ads, plus gives you double the colors in the color bucket, and more awesome pro features!

[Learn more, Memberships starting at \\$2.50/m!](#)

**Follow me
on Twitter!**

@ConvertingColor