

Converting Colors

Android(4294089392)

Have a look what the booklet for
Android(4294089392) contains.

Android(4294089392)	3
<i>Conversions</i>	4
<i>Details</i>	6
<i>Harmonies</i>	11
<i>Previews</i>	23
<i>Color Blindness Simulation</i>	26
<i>CSS Examples</i>	29

Color

Android(4294089392)

Conversions

Conversions Part 1

Format	Color
Hex	F29AB0
RGB	242, 154, 176
RGB Percent	95%, 60%, 69%
CMY	0.0510, 0.3961, 0.3098
CMYK	0.00, 0.36, 0.27, 0.05
HSL	345°, 77%, 78%
HSV	345°, 36%, 95%
XYZ	56.0100, 45.1230, 46.8319
YIQ	182.8200, 45.3860, 25.4980

Conversions

Conversions Part 2

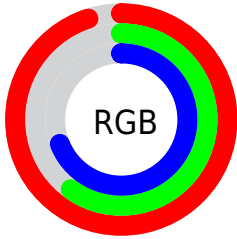
Format	Color
R_{YB}	242, 154, 176
Decimal	15899312
CIE _{Lab}	72.97, 35.69, 2.43
CIE _{LCh}	73, 35.771, 3.898
Yxy	45.1230, 0.3785, 0.3050
Android (android.graphics.Color)	4294089392 (0xFFFF29AB0)
YUV	182.8200, -3.3623, 51.9009
Hunter-Lab	67.1737, 31.2810, 5.6860

Details

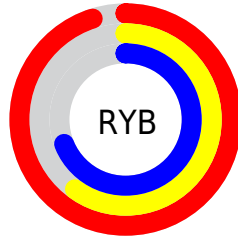
The Android color `4294089392` is a light color, and the websafe version is hex `FF9999`. A complement of this color would be `4288344796`, and the grayscale version is `4290230199`.

A 20% lighter version of the original color is `4294955496`, and `4290274684` is the 20% darker color. If you saturate the color by 10%, you get `4294083230`, and if you desaturate by 10%, it is `4294095554`.

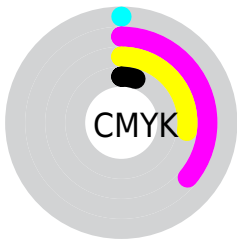
Distribution



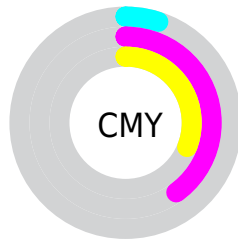
- Red (95%)
- Green (60%)
- Blue (69%)



- Red (95%)
- Yellow (60%)
- Blue (69%)



- Cyan (0%)
- Magenta (36%)
- Yellow (27%)
- Black (5%)



- Cyan (5%)
- Magenta (40%)
- Yellow (31%)

Brightness & Saturation Gradients

These gradients show how the Android color 4294089392 changes by changing the brightness by 10 percent. The first figure shows a shift by +10% for each color and the second figure -10%.

Similar to the brightness gradients but the following saturation gradients show a change of the Android color 4294089392 by changing the saturation by 10% instead.

 4294089392

 4294089392

4294967295

 4292181909

 4294955496

 4290274684


 4294962943

 4288433251

 4286591819

 4284815924

 4283105311

 4281597959

 4279107584

 4278190080

 4294089392

 4294089392

 4294083230

 4294095554

 4294077068

 4294101716

 4294070650

 4294108134

 4294064487

 4294114297

 4294058325

 4294115327

 4294052163

 4294049852

Harmonies

Analogous

The Analogous color harmony consists of three colors that are next to each other on the color wheel.



4292911057



4294089392



4294024848

Triad

The Triadic color harmony groups three colors that are evenly spaced from another and form a triangle on the color wheel.



4294089392



4288855164



4284006125

Complementary

The Complementary color scheme is a pair of colors which are on the opposite of each other on the color wheel.



4294089392



4288344796

Split Complementary

Split-complementary colors differ from the complementary color scheme. The scheme consists of three colors, the original color and two neighbors of the complement color.



4282107095



4294089392



4286300821

Square

The Square scheme is like the rectangle color scheme, but the four colors are evenly spaced on the color wheel.



4294089392



4291146353



4283680182



4287411700

Rectangle

The Rectangle color scheme consists of four colors that form a rectangle on the color wheel.



4294089392



4293436543



4283680182



4283089127

Sweetspot

The Sweet Spot groups the original color and five complimentary colors.



4294089392



4294960106



4292647666



4286607219



4278190080



4286611584

Same Dimension

The Same Dimension uses a secret algorithm to generate beautiful new colors.



4294089392



4294938539



4294095002



4286082159



4290248750



4281860110

Inverse Universe

The Inverse Universe completely reimagines the original color for something new.



4294089392



4294938539



4288339186



4286082159



4290248750



4281860110

Previews

White Background



This preview shows how the Android color 4294089392 looks on a white background.

Color Contrast Check

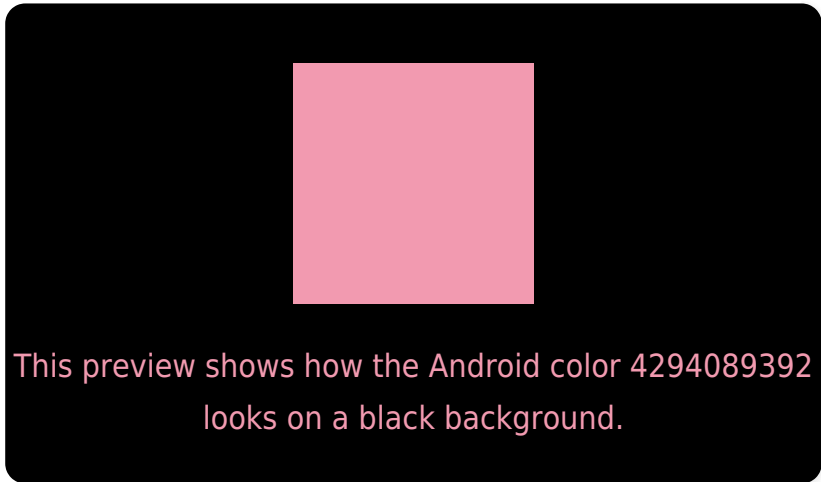
Large Text (above 18pt) WCAG AA × Fail

Any Text WCAG AA × Fail

Large Text (above 18pt) WCAG AAA × Fail

Any Text WCAG AAA × Fail

Black Background



Color Contrast Check

Large Text (above 18pt) WCAG AA ✓ Pass

Any Text WCAG AA ✓ Pass

Large Text (above 18pt) WCAG AAA ✓ Pass

Any Text WCAG AAA ✓ Pass

If you want to check with other color combinations, try the [Color Contrast Checker](#).

Android 4294089392 Background



This preview shows how black text looks on a background with the Android color 4294089392.




This preview shows how white text looks on a background with the Android color 4294089392.

Color Blindness Simulation

Color vision deficiency is a very complex topic, and I could not describe the different causes any better than Wikipedia does, so if you want to learn more, you should check out their [article about color blindness](#).

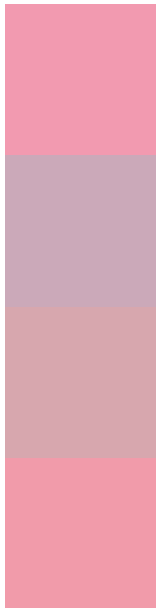
Dichromacy





Tritanopia
4294024103

Trichromacy



Original Color
4294089392

Protanomaly
4291537337

Deuteranomaly
4292323246

Tritanomaly
4294024106

Monochromacy



Original Color
4294089392

Achromatopsia
4290230199

Achromatomaly
4291603636

CSS Examples

Text

The CSS property to change the color of the text to Android 4294089392 is called "color". The color property can be set on classes, ids or directly on the HTML element.

This example shows how text in the color `rgb(242, 154, 176)` looks like.

```
.text, #text, p{  
    color:rgb(242, 154, 176)  
}
```

If you want to add a text shadow in that color use the text-shadow property, you can generate a text shadow directly with our [CSS Text Shadow Generator](#).

Here you see how black text with a 4 pixel rgb(242, 154, 176) colored shadow looks like.

```
.shadow{ text-shadow: 4px 4px 2px rgb(242, 154, 176) }
```

Border

The CSS property to change the border of an element to Android 4294089392 is called "border". The border property can be set on classes, ids or directly on the HTML element.

This example shows the color as border, it can be applied via the CSS property "border" or "border-color".

```
.border, #border, table{ border:4px solid rgb(242, 154, 176) }
```

If only the border color should be changed use the property `border-color`.

```
.border{ border-color:rgb(242, 154, 176) }
```

If you want to add a box shadow in that color use:

Here you see how a box with a 4 pixel `rgb(242, 154, 176)` colored shadow looks like.

```
.boxshadow{ -moz-box-shadow:4px 4px 4px  
4px rgb(242, 154, 176); -webkit-box-  
shadow:4px 4px 4px 4px rgb(242, 154, 176);  
box-shadow:4px 4px 4px 4px rgb(242, 154,  
176) }
```

Background

The CSS property to change the background color of an element to Android 4294089392 is called "background". The background property can be set on classes, ids or directly on the HTML element.

```
.background, #background, body{  
background: rgb(242, 154, 176) }
```

If only the background color should be changed can be used:

```
.background{ background-color: rgb(242,  
154, 176) }
```

This example shows the color as background, it is applied via the CSS property "background".

To optimize and compress your CSS code, you can use our [online CSS compressor and optimizer](#) based on csstidy. If you want to create a linear or radial gradient as background or border, check our [CSS Gradient Generator](#).

Hey! You found this booklet interesting? Support Converting Colors with the new Membership Option!

The pro membership hides all ads, plus gives you double the colors in the color bucket, and more awesome pro features!

[Learn more, Memberships starting at \\$2.50/m!](#)

**Follow me
on Twitter!**

@ConvertingColor