

# Converting Colors

Android(4294092209)

Have a look what the booklet for  
Android(4294092209) contains.

<b>Android(4294092209)</b> .....	3
<b><i>Conversions</i></b> .....	4
<b><i>Details</i></b> .....	6
<b><i>Harmonies</i></b> .....	11
<b><i>Previews</i></b> .....	23
<b><i>Color Blindness Simulation</i></b> .....	26
<b><i>CSS Examples</i></b> .....	29

# **Color**

**Android(4294092209)**

# Conversions

## Conversions Part 1

Format	Color
Hex	F2A5B1
RGB	242, 165, 177
RGB Percent	95%, 65%, 69%
CMY	0.0510, 0.3529, 0.3059
CMYK	0.00, 0.32, 0.27, 0.05
HSL	351°, 75%, 80%
HSV	351°, 32%, 95%
XYZ	58.0089, 48.9618, 47.9882
YIQ	189.3910, 42.0400, 20.0560

# Conversions

## Conversions Part 2

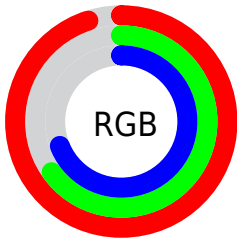
Format	Color
R <sub>Y</sub> B	242, 165, 177
Decimal	15902129
CIE Lab	75.43, 30.04, 5.43
CIE LCh	75, 30.523, 10.250
Yxy	48.9618, 0.3744, 0.3160
Android (android.graphics.Color)	4294092209 (0xFFFF2A5B1)
YUV	189.3910, -6.1088, 46.1381
Hunter-Lab	69.9727, 25.5280, 8.3191

# Details

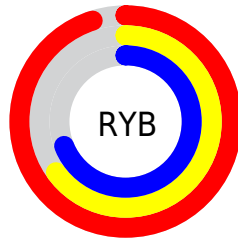
The Android color `4294092209` is a light color, and the websafe version is hex `CC9999`. A complement of this color would be `4289065702`, and the grayscale version is `4290624957`.

A 20% lighter version of the original color is `4294958569`, and `4290277501` is the 20% darker color. If you saturate the color by 10%, you get `4294086045`, and if you desaturate by 10%, it is `4294098373`.

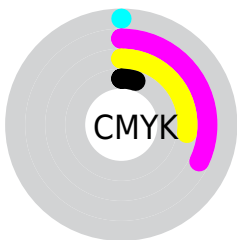
# Distribution



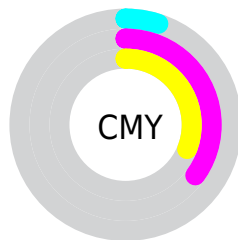
- Red (95%)
- Green (65%)
- Blue (69%)



- Red (95%)
- Yellow (65%)
- Blue (69%)



- Cyan (0%)
- Magenta (32%)
- Yellow (27%)
- Black (5%)



- Cyan (5%)
- Magenta (35%)
- Yellow (31%)

# Brightness & Saturation Gradients

These gradients show how the Android color 4294092209 changes by changing the brightness by 10 percent. The first figure shows a shift by +10% for each color and the second figure -10%.

Similar to the brightness gradients but the following saturation gradients show a change of the Android color 4294092209 by changing the saturation by 10% instead.



 4294092209

 4294092209

4294967295

 4292184726

 4294958569

 4290277501


 4294965759

 4288436068

 4286660428

 4284884789

 4283239968

 4281597960

 4279631872

 4278190080

 4294092209

 4294092209

 4294086045

 4294098373

 4294079880

 4294104538

 4294073460

 4294110958

 4294067295

 4294115327

 4294061131

 4294054966

 4294049830

# Harmonies

## Analogous

The Analogous color harmony consists of three colors that are next to each other on the color wheel.



4293306317



4294092209



4293896599

# Triad

The Triadic color harmony groups three colors that are evenly spaced from another and form a triangle on the color wheel.



4294092209



4289053582



4286366446

# Complementary

The Complementary color scheme is a pair of colors which are on the opposite of each other on the color wheel.



4294092209



4289065702

# Split Complementary

Split-complementary colors differ from the complementary color scheme. The scheme consists of three colors, the original color and two neighbors of the complement color.



4284729565



4294092209



4286892198

# Square

The Square scheme is like the rectangle color scheme, but the four colors are evenly spaced on the color wheel.



4294092209



4291083138



4285123267



4288985585

# Rectangle

The Rectangle color scheme consists of four colors that form a rectangle on the color wheel.



4294092209



4293242762



4285123267



4285646058

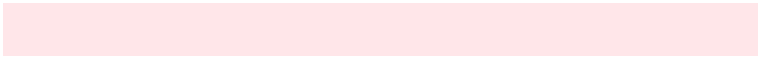


# Sweetspot

The Sweet Spot groups the original color and five complimentary colors.



4294092209



4294960873



4293240306



4286607475



4278190080



4286611584



# Same Dimension

The Same Dimension uses a secret algorithm to generate beautiful new colors.



4294092209



4294942381



4294098853



4286082158



4290248733



4281860105



# Inverse Universe

The Inverse Universe completely reimagines the original color for something new.



4294092209



4294942381



4289059058



4286082158



4290248733



4281860105



# Previews

## White Background



This preview shows how the Android color 4294092209 looks on a white background.

## Color Contrast Check

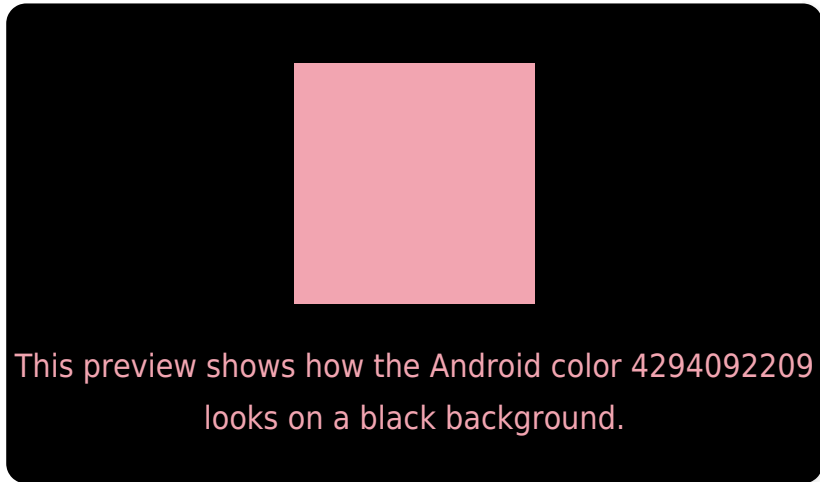
Large Text (above 18pt) WCAG AA × Fail

Any Text WCAG AA × Fail

Large Text (above 18pt) WCAG AAA × Fail

Any Text WCAG AAA × Fail

# Black Background



## Color Contrast Check

Large Text (above 18pt) WCAG AA ✓ Pass

Any Text WCAG AA ✓ Pass

Large Text (above 18pt) WCAG AAA ✓ Pass

Any Text WCAG AAA ✓ Pass

If you want to check with other color combinations, try the [Color Contrast Checker](#).



# Android 4294092209 Background



This preview shows how black text looks on a background with the Android color 4294092209.

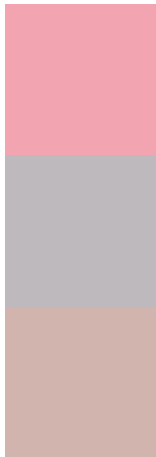


This preview shows how white text looks on a background with the Android color 4294092209.

# Color Blindness Simulation

Color vision deficiency is a very complex topic, and I could not describe the different causes any better than Wikipedia does, so if you want to learn more, you should check out their [article about color blindness](#).

## Dichromacy



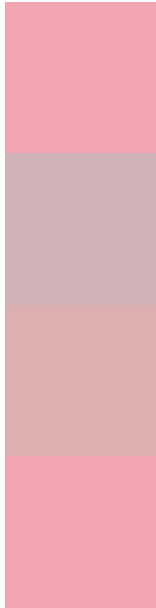
**Original Color**  
4294092209

**Protanopia**  
4290623932

**Deuteranopia**  
4291933358



# Trichromacy



**Original Color**  
4294092209

**Protanomaly**  
4291867320

**Deuteranomaly**  
4292718511

**Tritanomaly**  
4294092209

# Monochromacy



**Original Color**  
4294092209

**Achromatopsia**  
4290624957

**Achromatomaly**  
4291867833

# CSS Examples

## Text

The CSS property to change the color of the text to Android 4294092209 is called "color". The color property can be set on classes, ids or directly on the HTML element.

This example shows how text in the color `rgb(242, 165, 177)` looks like.

```
.text, #text, p{  
    color:rgb(242, 165, 177)  
}
```

If you want to add a text shadow in that color use the text-shadow property, you can generate a text shadow directly with our [CSS Text Shadow Generator](#).

Here you see how black text with a 4 pixel rgb(242, 165, 177) colored shadow looks like.

```
.shadow{ text-shadow: 4px 4px 2px rgb(242, 165, 177) }
```

## Border

The CSS property to change the border of an element to Android 4294092209 is called "border". The border property can be set on classes, ids or directly on the HTML element.

This example shows the color as border, it can be applied via the CSS property "border" or "border-color".

```
.border, #border, table{ border:4px solid rgb(242, 165, 177) }
```

If only the border color should be changed use the property `border-color`.

```
.border{ border-color:rgb(242, 165, 177) }
```

If you want to add a box shadow in that color use:

Here you see how a box with a 4 pixel `rgb(242, 165, 177)` colored shadow looks like.

```
.boxshadow{ -moz-box-shadow:4px 4px 4px  
4px rgb(242, 165, 177); -webkit-box-  
shadow:4px 4px 4px 4px rgb(242, 165, 177);  
box-shadow:4px 4px 4px 4px rgb(242, 165,  
177) }
```

# Background

The CSS property to change the background color of an element to Android 4294092209 is called "background". The background property can be set on classes, ids or directly on the HTML element.

```
.background, #background, body{  
background: rgb(242, 165, 177) }
```

If only the background color should be changed can be used:

```
.background{ background-color: rgb(242,  
165, 177) }
```

This example shows the color as background, it is applied via the CSS property "background".

To optimize and compress your CSS code, you can use our [online CSS compressor and optimizer](#) based on csstidy. If you want to create a linear or radial gradient as background or border, check our [CSS Gradient Generator](#).



Hey! You found this booklet interesting? Support Converting Colors with the new Membership Option!

The pro membership hides all ads, plus gives you double the colors in the color bucket, and more awesome pro features!

**[Learn more, Memberships starting at \\$2.50/m!](#)**

**Follow me  
on Twitter!**

@ConvertingColor