

Converting Colors

Android(4294098381)

Have a look what the booklet for
Android(4294098381) contains.

Android(4294098381)	3
<i>Conversions</i>	4
<i>Details</i>	6
<i>Harmonies</i>	11
<i>Previews</i>	23
<i>Color Blindness Simulation</i>	26
<i>CSS Examples</i>	29

Color

Android(4294098381)

Conversions

Conversions Part 1

Format	Color
Hex	F2BDCD
RGB	242, 189, 205
RGB Percent	95%, 74%, 80%
CMY	0.0510, 0.2588, 0.1961
CMYK	0.00, 0.22, 0.15, 0.05
HSL	342°, 67%, 85%
HSV	342°, 22%, 95%
XYZ	65.8350, 59.6802, 65.8072
YIQ	206.6710, 26.4520, 16.2120

Conversions

Conversions Part 2

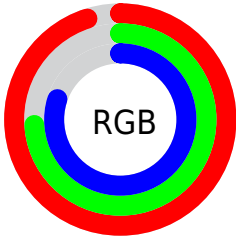
Format	Color
R _Y B	242, 189, 205
Decimal	15908301
CIE Lab	81.66, 21.43, -0.71
CIE LCh	82, 21.440, 358.102
Yxy	59.6802, 0.3441, 0.3119
Android (android.graphics.Color)	4294098381 (0xFF2BD3)
YUV	206.6710, -0.8238, 30.9835
Hunter-Lab	77.2530, 16.9250, 3.5715

Details

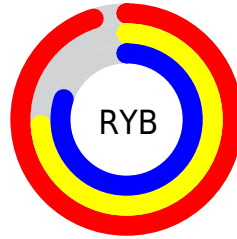
The Android color `4294098381` is a light color, and the websafe version is hex `FFCCCC`, and the color name is `orchid pink`. A complement of this color would be `4290638562`, and the grayscale version is `4291809231`.

A 20% lighter version of the original color is `4294964735`, and `4290348951` is the 20% darker color. If you saturate the color by 10%, you get `4294092220`, and if you desaturate by 10%, it is `4294104542`.

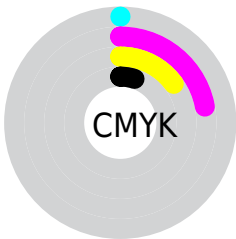
Distribution



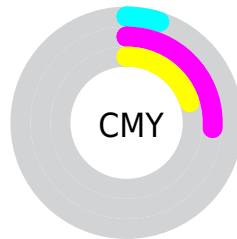
- Red (95%)
- Green (74%)
- Blue (80%)



- Red (95%)
- Yellow (74%)
- Blue (80%)



- Cyan (0%)
- Magenta (22%)
- Yellow (15%)
- Black (5%)




- Cyan (5%)
- Magenta (26%)
- Yellow (20%)

Brightness & Saturation Gradients

These gradients show how the Android color 4294098381 changes by changing the brightness by 10 percent. The first figure shows a shift by +10% for each color and the second figure -10%.

Similar to the brightness gradients but the following saturation gradients show a change of the Android color 4294098381 by changing the saturation by 10% instead.

 4294098381

 4294098381

4294967295

 4292190898

 4294964735

 4290348951

 4288573053

 4286797156

 4285087052

 4283442998

 4281864480

 4280614921

 4278190080

 4294098381

 4294098381

 4294092220

 4294104542

 4294086059

 4294110703

 4294079642

 4294115327

 4294073481

 4294067321

 4294061160

 4294054999

 4294049865

Harmonies

Analogous

The Analogous color harmony consists of three colors that are next to each other on the color wheel.



4293181664



4294098381



4294295225

Triad

The Triadic color harmony groups three colors that are evenly spaced from another and form a triangle on the color wheel.



4294098381



4291219623



4288533484

Complementary

The Complementary color scheme is a pair of colors which are on the opposite of each other on the color wheel.



4294098381



4290638562

Split Complementary

Split-complementary colors differ from the complementary color scheme. The scheme consists of three colors, the original color and two neighbors of the complement color.



4287944413



4294098381



4289713333

Square

The Square scheme is like the rectangle color scheme, but the four colors are evenly spaced on the color wheel.



4294098381



4292659619



4288468937



4289908211

Rectangle

The Rectangle color scheme consists of four colors that form a rectangle on the color wheel.



4294098381



4293968302



4288468937



4288206056

Sweetspot

The Sweet Spot groups the original color and five complimentary colors.



4294098381



4294962675



4292984306



4286608760



4278190080



4286611584

Same Dimension

The Same Dimension uses a secret algorithm to generate beautiful new colors.



4294098381



4294950353



4294100925



4286082159



4290248759



4281860113

Inverse Universe

The Inverse Universe completely reimagines the original color for something new.



4294098381



4294950353



4290636018



4286082159



4290248759



4281860113

Previews

White Background



This preview shows how the Android color 4294098381 looks on a white background.

Color Contrast Check

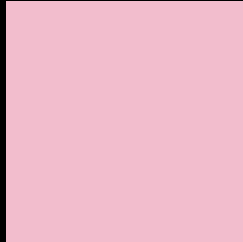
Large Text (above 18pt) WCAG AA × Fail

Any Text WCAG AA × Fail

Large Text (above 18pt) WCAG AAA × Fail

Any Text WCAG AAA × Fail

Black Background



This preview shows how the Android color 4294098381 looks on a black background.

Color Contrast Check

Large Text (above 18pt) WCAG AA ✓ Pass

Any Text WCAG AA ✓ Pass

Large Text (above 18pt) WCAG AAA ✓ Pass

Any Text WCAG AAA ✓ Pass

If you want to check with other color combinations, try the [Color Contrast Checker](#).

Android 4294098381 Background



This preview shows how black text looks on a background with the Android color 4294098381.



This preview shows how white text looks on a background with the Android color 4294098381.

Color Blindness Simulation

Color vision deficiency is a very complex topic, and I could not describe the different causes any better than Wikipedia does, so if you want to learn more, you should check out their [article about color blindness](#).


Dichromacy



Original Color
4294098381

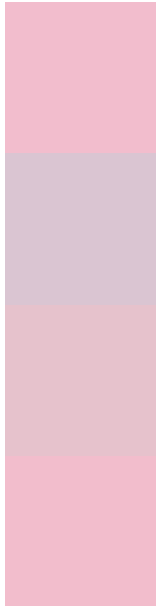
Protanopia
4291611349

Deuteranopia
4292855244



Tritanopia
4294098380

Trichromacy



Original Color
4294098381

Protanomaly
4292527570

Deuteranomaly
4293313228

Tritanomaly
4294098380

Monochromacy



Original Color
4294098381

Achromatopsia
4291809231

Achromatomaly
4292659406

CSS Examples

Text

The CSS property to change the color of the text to Android 4294098381 is called "color". The color property can be set on classes, ids or directly on the HTML element.

This example shows how text in the color `rgb(242, 189, 205)` looks like.

```
.text, #text, p{  
    color:rgb(242, 189, 205)  
}
```

If you want to add a text shadow in that color use the text-shadow property, you can generate a text shadow directly with our [CSS Text Shadow Generator](#).

Here you see how black text with a 4 pixel rgb(242, 189, 205) colored shadow looks like.

```
.shadow{ text-shadow: 4px 4px 2px rgb(242, 189, 205) }
```

Border

The CSS property to change the border of an element to Android 4294098381 is called "border". The border property can be set on classes, ids or directly on the HTML element.

This example shows the color as border, it can be applied via the CSS property "border" or "border-color".

```
.border, #border, table{ border:4px solid rgb(242, 189, 205) }
```

If only the border color should be changed use the property `border-color`.

```
.border{ border-color:rgb(242, 189, 205) }
```

If you want to add a box shadow in that color use:

Here you see how a box with a 4 pixel `rgb(242, 189, 205)` colored shadow looks like.

```
.boxshadow{ -moz-box-shadow:4px 4px 4px  
4px rgb(242, 189, 205); -webkit-box-  
shadow:4px 4px 4px 4px rgb(242, 189, 205);  
box-shadow:4px 4px 4px 4px rgb(242, 189,  
205) }
```

Background

The CSS property to change the background color of an element to Android 4294098381 is called "background". The background property can be set on classes, ids or directly on the HTML element.

```
.background, #background, body{  
background: rgb(242, 189, 205) }
```

If only the background color should be changed can be used:

```
.background{ background-color: rgb(242,  
189, 205) }
```

This example shows the color as background, it is applied via the CSS property "background".

To optimize and compress your CSS code, you can use our [online CSS compressor and optimizer](#) based on csstidy. If you want to create a linear or radial gradient as background or border, check our [CSS Gradient Generator](#).

Hey! You found this booklet interesting? Support Converting Colors with the new Membership Option!

The pro membership hides all ads, plus gives you double the colors in the color bucket, and more awesome pro features!

[Learn more, Memberships starting at \\$2.50/m!](#)

**Follow me
on Twitter!**

@ConvertingColor