

Converting Colors

Android(4294100717)

Have a look what the booklet for
Android(4294100717) contains.

Android(4294100717)	3
<i>Conversions</i>	4
<i>Details</i>	6
<i>Harmonies</i>	11
<i>Previews</i>	23
<i>Color Blindness Simulation</i>	26
<i>CSS Examples</i>	29

Color

Android(4294100717)

Conversions

Conversions Part 1

Format	Color
Hex	F2C6ED
RGB	242, 198, 237
RGB Percent	95%, 78%, 93%
CMY	0.0510, 0.2235, 0.0706
CMYK	0.00, 0.18, 0.02, 0.05
HSL	307°, 63%, 86%
HSV	307°, 18%, 95%
XYZ	72.0981, 65.3798, 88.9404
YIQ	215.6020, 13.7050, 21.4570

Conversions

Conversions Part 2

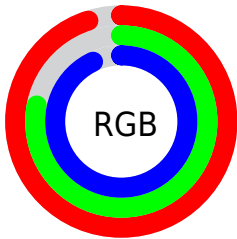
Format	Color
R_{YB}	242, 198, 237
Decimal	15910637
CIE _{Lab}	84.68, 22.04, -13.37
CIE _{LCh}	85, 25.779, 328.751
Yxy	65.3798, 0.3184, 0.2888
Android (android.graphics.Color)	4294100717 (0xFFFF2C6ED)
YUV	215.6020, 10.5492, 23.1510
Hunter-Lab	80.8578, 17.6611, -8.6162

Details

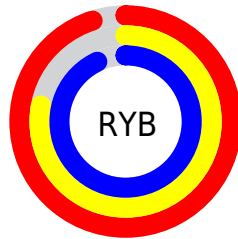
The Android color `4294100717` is a light color, and the websafe version is hex `FFCCFF`. A complement of this color would be `4291228363`, and the grayscale version is `4292335575`.

A 20% lighter version of the original color is `4294967295`, and `4290416821` is the 20% darker color. If you saturate the color by 10%, you get `4294094570`, and if you desaturate by 10%, it is `4294106864`.

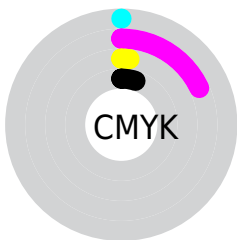
Distribution



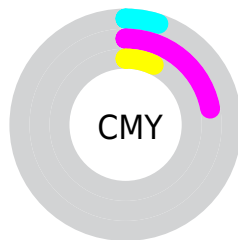
- Red (95%)
- Green (78%)
- Blue (93%)



- Red (95%)
- Yellow (78%)
- Blue (93%)



- Cyan (0%)
- Magenta (18%)
- Yellow (2%)
- Black (5%)



- Cyan (5%)
- Magenta (22%)
- Yellow (7%)

Brightness & Saturation Gradients

These gradients show how the Android color 4294100717 changes by changing the brightness by 10 percent. The first figure shows a shift by +10% for each color and the second figure -10%.

Similar to the brightness gradients but the following saturation gradients show a change of the Android color 4294100717 by changing the saturation by 10% instead.

 4294100717

 4294100717

4294967295

 4292193233

 4290416821

 4288575130

 4286864768

 4285154663

 4283575887

 4281997368

 4280549667

 4278190090

 4294100717

 4294100717

 4294094570

 4294106864

 4294088424

 4294113010

 4294082021

 4294115317

 4294075874

 4294115320

 4294069727

 4294115323

 4294063581

 4294115325

 4294057434

 4294115327

 4294051031

 4294050007

Harmonies

Analogous

The Analogous color harmony consists of three colors that are next to each other on the color wheel.



4292267774



4294100717



4294951637

Triad

The Triadic color harmony groups three colors that are evenly spaced from another and form a triangle on the color wheel.



4294100717



4293382563



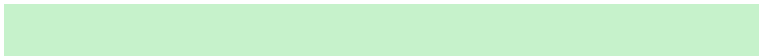
4287619562

Complementary

The Complementary color scheme is a pair of colors which are on the opposite of each other on the color wheel.



4294100717



4291228363

Split Complementary

Split-complementary colors differ from the complementary color scheme. The scheme consists of three colors, the original color and two neighbors of the complement color.



4288274897



4294100717



4291680680

Square

The Square scheme is like the rectangle color scheme, but the four colors are evenly spaced on the color wheel.



4294100717



4294691243



4289847225



4288273916

Rectangle

The Rectangle color scheme consists of four colors that form a rectangle on the color wheel.



4294100717



4294951621



4289847225



4287685090

Sweetspot

The Sweet Spot groups the original color and five complimentary colors.



4294100717



4294963966



4291479282



4286609535



4278190080



4286611584

Same Dimension

The Same Dimension uses a secret algorithm to generate beautiful new colors.



4294100717



4294952953



4294100696



4286082166



4290248867



4281860146

Inverse Universe

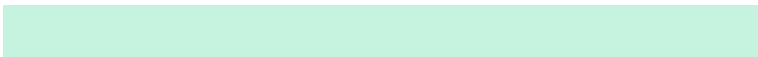
The Inverse Universe completely reimagines the original color for something new.



4294100717



4294952953



4291228384



4286082166



4290248867



4281860146

Previews

White Background



This preview shows how the Android color 4294100717 looks on a white background.

Color Contrast Check

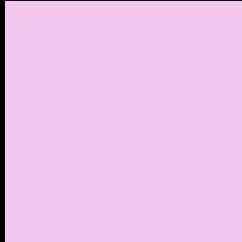
Large Text (above 18pt) WCAG AA × Fail

Any Text WCAG AA × Fail

Large Text (above 18pt) WCAG AAA × Fail

Any Text WCAG AAA × Fail

Black Background



This preview shows how the Android color 4294100717 looks on a black background.

Color Contrast Check

Large Text (above 18pt) WCAG AA ✓ Pass

Any Text WCAG AA ✓ Pass

Large Text (above 18pt) WCAG AAA ✓ Pass

Any Text WCAG AAA ✓ Pass

If you want to check with other color combinations, try the [Color Contrast Checker](#).

Android 4294100717 Background



This preview shows how black text looks on a background with the Android color 4294100717.



This preview shows how white text looks on a background with the Android color 4294100717.

Color Blindness Simulation

Color vision deficiency is a very complex topic, and I could not describe the different causes any better than Wikipedia does, so if you want to learn more, you should check out their [article about color blindness](#).

Dichromacy



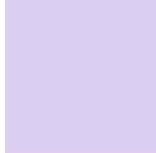


Tritanopia
4293904857

Trichromacy



Original Color
4294100717



Protanomaly
4292529906



Deuteranomaly
4293250028

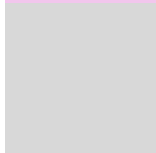


Tritanomaly
4293970144

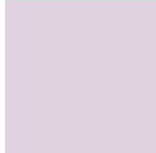
Monochromacy



Original Color
4294100717



Achromatopsia
4292401368



Achromatomaly
4292989408

CSS Examples

Text

The CSS property to change the color of the text to Android 4294100717 is called "color". The color property can be set on classes, ids or directly on the HTML element.

This example shows how text in the color `rgb(242, 198, 237)` looks like.

```
.text, #text, p{  
    color:rgb(242, 198, 237)  
}
```

If you want to add a text shadow in that color use the text-shadow property, you can generate a text shadow directly with our [CSS Text Shadow Generator](#).

Here you see how black text with a 4 pixel rgb(242, 198, 237) colored shadow looks like.

```
.shadow{ text-shadow: 4px 4px 2px rgb(242, 198, 237) }
```

Border

The CSS property to change the border of an element to Android 4294100717 is called "border". The border property can be set on classes, ids or directly on the HTML element.

This example shows the color as border, it can be applied via the CSS property "border" or "border-color".

```
.border, #border, table{ border:4px solid rgb(242, 198, 237) }
```

If only the border color should be changed use the property `border-color`.

```
.border{ border-color:rgb(242, 198, 237) }
```

If you want to add a box shadow in that color use:

Here you see how a box with a 4 pixel `rgb(242, 198, 237)` colored shadow looks like.

```
.boxshadow{ -moz-box-shadow:4px 4px 4px  
4px rgb(242, 198, 237); -webkit-box-  
shadow:4px 4px 4px 4px rgb(242, 198, 237);  
box-shadow:4px 4px 4px 4px rgb(242, 198,  
237) }
```

Background

The CSS property to change the background color of an element to Android 4294100717 is called "background". The background property can be set on classes, ids or directly on the HTML element.

```
.background, #background, body{  
background: rgb(242, 198, 237) }
```

If only the background color should be changed can be used:

```
.background{ background-color: rgb(242,  
198, 237) }
```

This example shows the color as background, it is applied via the CSS property "background".

To optimize and compress your CSS code, you can use our [online CSS compressor and optimizer](#) based on csstidy. If you want to create a linear or radial gradient as background or border, check our [CSS Gradient Generator](#).

Hey! You found this booklet interesting? Support Converting Colors with the new Membership Option!

The pro membership hides all ads, plus gives you double the colors in the color bucket, and more awesome pro features!

[Learn more, Memberships starting at \\$2.50/m!](#)

**Follow me
on Twitter!**

@ConvertingColor