

Converting Colors

Android(4294101446)

Have a look what the booklet for
Android(4294101446) contains.

Android(4294101446)	3
<i>Conversions</i>	4
<i>Details</i>	6
<i>Harmonies</i>	11
<i>Previews</i>	23
<i>Color Blindness Simulation</i>	26
<i>CSS Examples</i>	29

Color

Android(4294101446)

Conversions

Conversions Part 1

Format	Color
Hex	F2C9C6
RGB	242, 201, 198
RGB Percent	95%, 79%, 78%
CMY	0.0510, 0.2118, 0.2235
CMYK	0.00, 0.17, 0.18, 0.05
HSL	4°, 63%, 86%
HSV	4°, 18%, 95%
XYZ	67.6976, 64.7278, 62.3517
YIQ	212.9170, 25.3990, 7.7590

Conversions

Conversions Part 2

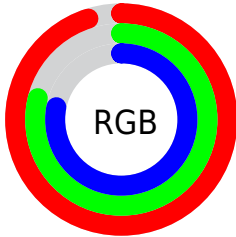
Format	Color
R_{YB}	242, 201, 198
Decimal	15911366
CIE _{Lab}	84.34, 14.01, 6.92
CIE _{LCh}	84, 15.630, 26.288
Yxy	64.7278, 0.3476, 0.3323
Android (android.graphics.Color)	4294101446 (0xFFFF2C9C6)
YUV	212.9170, -7.3541, 25.5058
Hunter-Lab	80.4536, 9.4051, 10.3676

Details

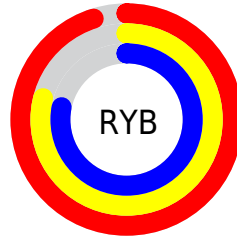
The Android color `4294101446` is a light color, and the websafe version is hex `FFCCCC`. A complement of this color would be `4291227634`, and the grayscale version is `4292203989`.

A 20% lighter version of the original color is `4294967295`, and `4290352016` is the 20% darker color. If you saturate the color by 10%, you get `4294095534`, and if you desaturate by 10%, it is `4294107358`.

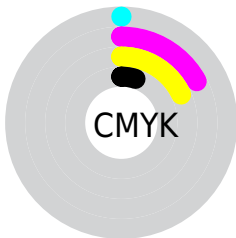
Distribution



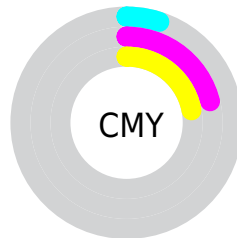
- Red (95%)
- Green (79%)
- Blue (78%)



- Red (95%)
- Yellow (79%)
- Blue (78%)



- Cyan (0%)
- Magenta (17%)
- Yellow (18%)
- Black (5%)



- Cyan (5%)
- Magenta (21%)
- Yellow (22%)

Brightness & Saturation Gradients

These gradients show how the Android color 4294101446 changes by changing the brightness by 10 percent. The first figure shows a shift by +10% for each color and the second figure -10%.

Similar to the brightness gradients but the following saturation gradients show a change of the Android color 4294101446 by changing the saturation by 10% instead.

 4294101446

 4294101446

4294967295

 4292193963


 4290352016

 4288575863

 4286865502

 4285155398

 4283511344

 4281932827

 4280615936

 4278190080

 4294101446

 4294101446

 4294095534

 4294107358

 4294089878

 4294113014

 4294083965

 4294115327

 4294078309

 4294072397

 4294066741

 4294060829

 4294055172

 4294053888

Harmonies

Analogous

The Analogous color harmony consists of three colors that are next to each other on the color wheel.



4293904853



4294101446



4293774522

Triad

The Triadic color harmony groups three colors that are evenly spaced from another and form a triangle on the color wheel.



4294101446



4290763202



4290827503

Complementary

The Complementary color scheme is a pair of colors which are on the opposite of each other on the color wheel.



4294101446



4291227634

Split Complementary

Split-complementary colors differ from the complementary color scheme. The scheme consists of three colors, the original color and two neighbors of the complement color.



4289911018



4294101446



4289911760

Square

The Square scheme is like the rectangle color scheme, but the four colors are evenly spaced on the color wheel.



4294101446



4291876536



4289584095



4292071405

Rectangle

The Rectangle color scheme consists of four colors that form a rectangle on the color wheel.



4294101446



4293250998



4289584095



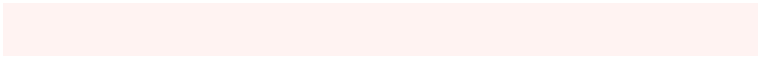
4290500335

Sweetspot

The Sweet Spot groups the original color and five complimentary colors.



4294101446



4294964210



4294100719



4286609528



4278190080



4286611584

Same Dimension

The Same Dimension uses a secret algorithm to generate beautiful new colors.



4294101446



4294953927



4294107078



4286082412



4290252032



4281861120

Inverse Universe

The Inverse Universe completely reimagines the original color for something new.



4291227634



4291296255



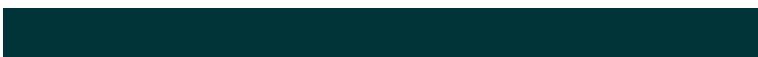
4291222002



4285298552



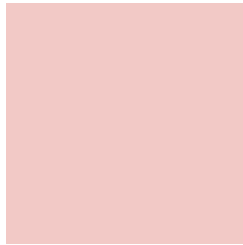
4278234040



4278203448

Previews

White Background



This preview shows how the Android color 4294101446 looks on a white background.

Color Contrast Check

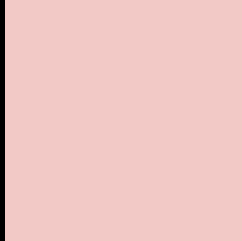
Large Text (above 18pt) WCAG AA × Fail

Any Text WCAG AA × Fail

Large Text (above 18pt) WCAG AAA × Fail

Any Text WCAG AAA × Fail

Black Background



This preview shows how the Android color 4294101446 looks on a black background.

Color Contrast Check

Large Text (above 18pt) WCAG AA ✓ Pass

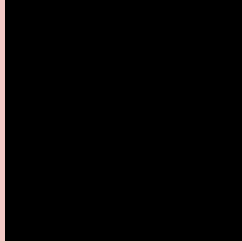
Any Text WCAG AA ✓ Pass

Large Text (above 18pt) WCAG AAA ✓ Pass

Any Text WCAG AAA ✓ Pass

If you want to check with other color combinations, try the [Color Contrast Checker](#).

Android 4294101446 Background



This preview shows how black text looks on a background with the Android color 4294101446.



This preview shows how white text looks on a background with the Android color 4294101446.

Color Blindness Simulation

Color vision deficiency is a very complex topic, and I could not describe the different causes any better than Wikipedia does, so if you want to learn more, you should check out their [article about color blindness](#).

Dichromacy



Original Color
[4294101446](#)

Protanopia
[4292399819](#)

Deuteranopia
[4293708742](#)

Trichromacy



Original Color
4294101446

Protanomaly
4292988873

Deuteranomaly
4293839558

Tritanomaly
4294166736

Monochromacy



Original Color
4294101446

Achromatopsia
4292203989

Achromatomaly
4292923856

CSS Examples

Text

The CSS property to change the color of the text to Android 4294101446 is called "color". The color property can be set on classes, ids or directly on the HTML element.

This example shows how text in the color `rgb(242, 201, 198)` looks like.

```
.text, #text, p{  
    color:rgb(242, 201, 198)  
}
```

If you want to add a text shadow in that color use the text-shadow property, you can generate a text shadow directly with our [CSS Text Shadow Generator](#).

Here you see how black text with a 4 pixel rgb(242, 201, 198) colored shadow looks like.

```
.shadow{ text-shadow: 4px 4px 2px rgb(242, 201, 198) }
```

Border

The CSS property to change the border of an element to Android 4294101446 is called "border". The border property can be set on classes, ids or directly on the HTML element.

This example shows the color as border, it can be applied via the CSS property "border" or "border-color".

```
.border, #border, table{ border:4px solid rgb(242, 201, 198) }
```

If only the border color should be changed use the property border-color.

```
.border{ border-color:rgb(242, 201, 198) }
```

If you want to add a box shadow in that color use:

Here you see how a box with a 4 pixel rgb(242, 201, 198) colored shadow looks like.

```
.boxshadow{ -moz-box-shadow:4px 4px 4px  
4px rgb(242, 201, 198); -webkit-box-  
shadow:4px 4px 4px 4px rgb(242, 201, 198);  
box-shadow:4px 4px 4px 4px rgb(242, 201,  
198) }
```

Background

The CSS property to change the background color of an element to Android 4294101446 is called "background". The background property can be set on classes, ids or directly on the HTML element.

```
.background, #background, body{  
background: rgb(242, 201, 198) }
```

If only the background color should be changed can be used:

```
.background{ background-color: rgb(242,  
201, 198) }
```

This example shows the color as background, it is applied via the CSS property "background".

To optimize and compress your CSS code, you can use our [online CSS compressor and optimizer](#) based on csstidy. If you want to create a linear or radial gradient as background or border, check our [CSS Gradient Generator](#).

Hey! You found this booklet interesting? Support Converting Colors with the new Membership Option!

The pro membership hides all ads, plus gives you double the colors in the color bucket, and more awesome pro features!

[Learn more, Memberships starting at \\$2.50/m!](#)

**Follow me
on Twitter!**

@ConvertingColor