

Converting Colors

Android(4294104258)

Have a look what the booklet for
Android(4294104258) contains.

Android(4294104258)	3
<i>Conversions</i>	4
<i>Details</i>	6
<i>Harmonies</i>	11
<i>Previews</i>	23
<i>Color Blindness Simulation</i>	26
<i>CSS Examples</i>	29

Color

Android(4294104258)

Conversions

Conversions Part 1

Format	Color
Hex	F2D4C2
RGB	242, 212, 194
RGB Percent	95%, 83%, 76%
CMY	0.0510, 0.1686, 0.2392
CMYK	0.00, 0.12, 0.20, 0.05
HSL	23°, 65%, 85%
HSV	23°, 20%, 95%
XYZ	69.8990, 69.8593, 60.8390
YIQ	218.9180, 23.6580, 0.7620

Conversions

Conversions Part 2

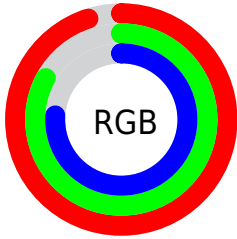
Format	Color
RYB	242, 223, 194
Decimal	15914178
CIELab	86.93, 7.66, 12.73
CIElCh	87, 14.860, 58.962
Yxy	69.8593, 0.3485, 0.3483
Android (android.graphics.Color)	4294104258 (0xFFFF2D4C2)
YUV	218.9180, -12.2846, 20.2429
Hunter-Lab	83.5818, 3.0103, 15.3502

Details

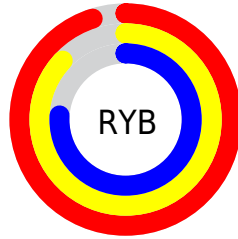
The Android color `4294104258` is a light color, and the websafe version is hex `FFCCCC`. A complement of this color would be `4290961650`, and the grayscale version is `4292598747`.

A 20% lighter version of the original color is `4294967291`, and `4290354572` is the 20% darker color. If you saturate the color by 10%, you get `4294100394`, and if you desaturate by 10%, it is `4294108122`.

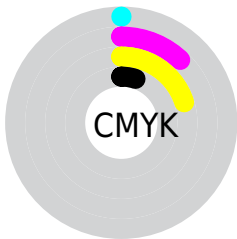
Distribution



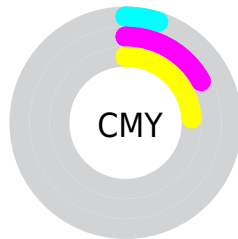
- Red (95%)
- Green (83%)
- Blue (76%)



- Red (95%)
- Yellow (87%)
- Blue (76%)



- Cyan (0%)
- Magenta (12%)
- Yellow (20%)
- Black (5%)



- Cyan (5%)
- Magenta (17%)
- Yellow (24%)

Brightness & Saturation Gradients

These gradients show how the Android color 4294104258 changes by changing the brightness by 10 percent. The first figure shows a shift by +10% for each color and the second figure -10%.

Similar to the brightness gradients but the following saturation gradients show a change of the Android color 4294104258 by changing the saturation by 10% instead.

 4294104258

 4294104258

4294967295

 4292196519

 4294967291

 4290354572

 4288578419

 4286868058

 4285157955

 4283513645

 4281935128

 4280553728

 4278190080

 4294104258

 4294104258

 4294100394

 4294108122

 4294096530

 4294111986

 4294092665

 4294115327

 4294088801

 4294084681

 4294080817

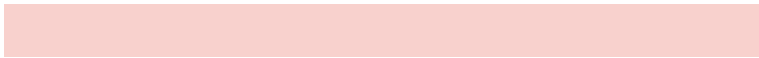
 4294076953

 4294073088

Harmonies

Analogous

The Analogous color harmony consists of three colors that are next to each other on the color wheel.



4294496717



4294104258



4293318846

Triad

The Triadic color harmony groups three colors that are evenly spaced from another and form a triangle on the color wheel.



4294104258



4290437849



4292663026

Complementary

The Complementary color scheme is a pair of colors which are on the opposite of each other on the color wheel.



4294104258



4290961650

Split Complementary

Split-complementary colors differ from the complementary color scheme. The scheme consists of three colors, the original color and two neighbors of the complement color.



4291484662



4294104258



4290175719

Square

The Square scheme is like the rectangle color scheme, but the four colors are evenly spaced on the color wheel.



4294104258



4291223755



4290568177



4293710568

Rectangle

The Rectangle color scheme consists of four colors that form a rectangle on the color wheel.



4294104258



4292664511



4290568177



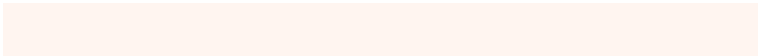
4292270324

Sweetspot

The Sweet Spot groups the original color and five complimentary colors.



4294104258



4294964720



4294099680



4286610039



4278190080



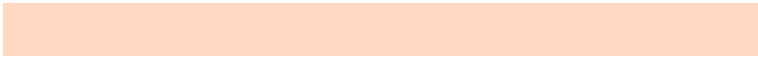
4286611584

Same Dimension

The Same Dimension uses a secret algorithm to generate beautiful new colors.



4294104258



4294957506



4294110402



4286083180



4290266368



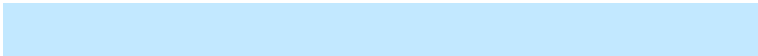
4281865472

Inverse Universe

The Inverse Universe completely reimagines the original color for something new.



4290961650



4290963711



4290955506



4285297528



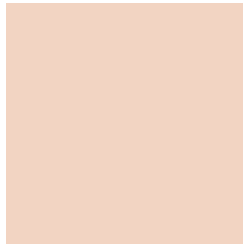
4278219704



4278199096

Previews

White Background



This preview shows how the Android color 4294104258 looks on a white background.

Color Contrast Check

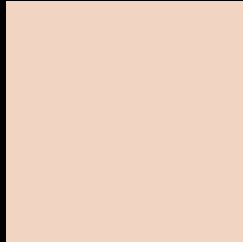
Large Text (above 18pt) WCAG AA × Fail

Any Text WCAG AA × Fail

Large Text (above 18pt) WCAG AAA × Fail

Any Text WCAG AAA × Fail

Black Background



This preview shows how the Android color 4294104258 looks on a black background.

Color Contrast Check

Large Text (above 18pt) WCAG AA ✓ Pass

Any Text WCAG AA ✓ Pass

Large Text (above 18pt) WCAG AAA ✓ Pass

Any Text WCAG AAA ✓ Pass

If you want to check with other color combinations, try the [Color Contrast Checker](#).

Android 4294104258 Background



This preview shows how black text looks on a background with the Android color 4294104258.

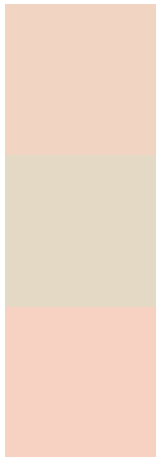


This preview shows how white text looks on a background with the Android color 4294104258.

Color Blindness Simulation

Color vision deficiency is a very complex topic, and I could not describe the different causes any better than Wikipedia does, so if you want to learn more, you should check out their [article about color blindness](#).

Dichromacy



Original Color
4294104258

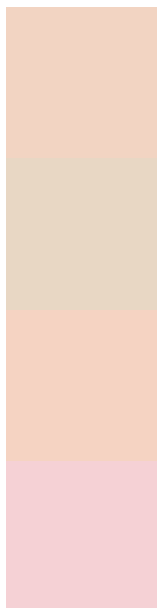
Protanopia
4293122501

Deuteranopia
4294431426



Tritanopia
4294365408

Trichromacy



Original Color

4294104258

Protanomaly

4293449668

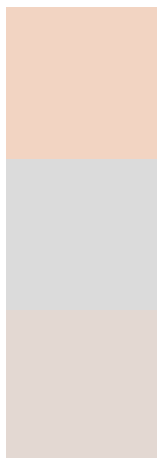
Deuteranomaly

4294300610

Tritanomaly

4294300117

Monochromacy



Original Color

4294104258

Achromatopsia

4292598747

Achromatomaly

4293122258

CSS Examples

Text

The CSS property to change the color of the text to Android 4294104258 is called "color". The color property can be set on classes, ids or directly on the HTML element.

This example shows how text in the color `rgb(242, 212, 194)` looks like.

```
.text, #text, p{  
    color:rgb(242, 212, 194)  
}
```

If you want to add a text shadow in that color use the text-shadow property, you can generate a text shadow directly with our [CSS Text Shadow Generator](#).

Here you see how black text with a 4 pixel rgb(242, 212, 194) colored shadow looks like.

```
.shadow{ text-shadow: 4px 4px 2px rgb(242, 212, 194) }
```

Border

The CSS property to change the border of an element to Android 4294104258 is called "border". The border property can be set on classes, ids or directly on the HTML element.

This example shows the color as border, it can be applied via the CSS property "border" or "border-color".

```
.border, #border, table{ border:4px solid rgb(242, 212, 194) }
```

If only the border color should be changed use the property `border-color`.

```
.border{ border-color:rgb(242, 212, 194) }
```

If you want to add a box shadow in that color use:

Here you see how a box with a 4 pixel `rgb(242, 212, 194)` colored shadow looks like.

```
.boxshadow{ -moz-box-shadow:4px 4px 4px  
4px rgb(242, 212, 194); -webkit-box-  
shadow:4px 4px 4px 4px rgb(242, 212, 194);  
box-shadow:4px 4px 4px 4px rgb(242, 212,  
194) }
```

Background

The CSS property to change the background color of an element to Android 4294104258 is called "background". The background property can be set on classes, ids or directly on the HTML element.

```
.background, #background, body{  
background: rgb(242, 212, 194) }
```

If only the background color should be changed can be used:

```
.background{ background-color: rgb(242,  
212, 194) }
```

This example shows the color as background, it is applied via the CSS property "background".

To optimize and compress your CSS code, you can use our [online CSS compressor and optimizer](#) based on csstidy. If you want to create a linear or radial gradient as background or border, check our [CSS Gradient Generator](#).

Hey! You found this booklet interesting? Support Converting Colors with the new Membership Option!

The pro membership hides all ads, plus gives you double the colors in the color bucket, and more awesome pro features!

[Learn more, Memberships starting at \\$2.50/m!](#)

**Follow me
on Twitter!**

@ConvertingColor