

Converting Colors

Android(4294104779)

Have a look what the booklet for
Android(4294104779) contains.

Android(4294104779)	3
<i>Conversions</i>	4
<i>Details</i>	6
<i>Harmonies</i>	11
<i>Previews</i>	23
<i>Color Blindness Simulation</i>	26
<i>CSS Examples</i>	29

Color

Android(4294104779)

Conversions

Conversions Part 1

Format	Color
Hex	F2D6CB
RGB	242, 214, 203
RGB Percent	95%, 84%, 80%
CMY	0.0510, 0.1608, 0.2039
CMYK	0.00, 0.12, 0.16, 0.05
HSL	17°, 60%, 87%
HSV	17°, 16%, 95%
XYZ	71.4440, 71.2822, 66.4932
YIQ	221.1180, 20.2190, 2.5150

Conversions

Conversions Part 2

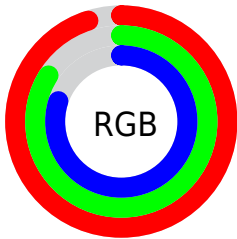
Format	Color
R_{YB}	242, 218, 203
Decimal	15914699
CIE Lab	87.62, 7.97, 8.98
CIE LCh	88, 12.005, 48.396
Yxy	71.2822, 0.3415, 0.3407
Android (android.graphics.Color)	4294104779 (0xFFFF2D6CB)
YUV	221.1180, -8.9322, 18.3135
Hunter-Lab	84.4288, 3.2972, 12.4053

Details

The Android color `4294104779` is a light color, and the websafe version is hex `FFCCCC`. A complement of this color would be `4291553266`, and the grayscale version is `4292730333`.

A 20% lighter version of the original color is `4294967295`, and `4290420629` is the 20% darker color. If you saturate the color by 10%, you get `4294100403`, and if you desaturate by 10%, it is `4294109155`.

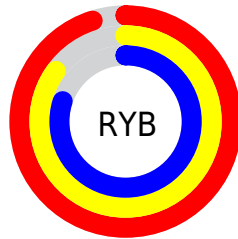
Distribution



Red (95%)

Green (84%)

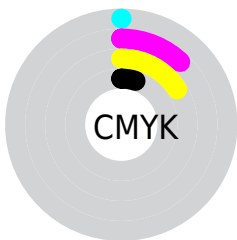
Blue (80%)



Red (95%)

Yellow (85%)

Blue (80%)

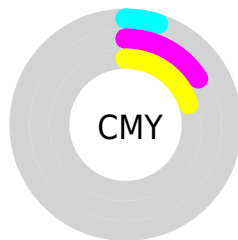


Cyan (0%)

Magenta (12%)

Yellow (16%)

Black (5%)



Cyan (5%)

Magenta (16%)

Yellow (20%)

Brightness & Saturation Gradients

These gradients show how the Android color 4294104779 changes by changing the brightness by 10 percent. The first figure shows a shift by +10% for each color and the second figure -10%.

Similar to the brightness gradients but the following saturation gradients show a change of the Android color 4294104779 by changing the saturation by 10% instead.

 4294104779

 4294104779

4294967295

 4292197040

 4290420629

 4288578939

 4286868578

 4285158474

 4283579700

 4282001183

 4280619526

 4278190080

 4294104779

 4294104779

 4294100403

 4294109155

 4294095771

 4294113787

 4294091394

 4294115327

 4294087018

 4294082386

 4294078010

 4294073378

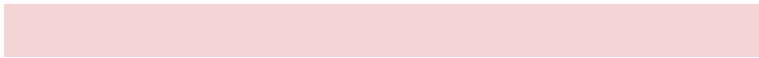
 4294069001

 4294067200

Harmonies

Analogous

The Analogous color harmony consists of three colors that are next to each other on the color wheel.



4294300885



4294104779



4293581254

Triad

The Triadic color harmony groups three colors that are evenly spaced from another and form a triangle on the color wheel.



4294104779



4291158743



4292467441

Complementary

The Complementary color scheme is a pair of colors which are on the opposite of each other on the color wheel.



4294104779



4291553266

Split Complementary

Split-complementary colors differ from the complementary color scheme. The scheme consists of three colors, the original color and two neighbors of the complement color.



4291550962



4294104779



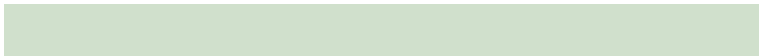
4290765538

Square

The Square scheme is like the rectangle color scheme, but the four colors are evenly spaced on the color wheel.



4294104779



4291879116



4290896364



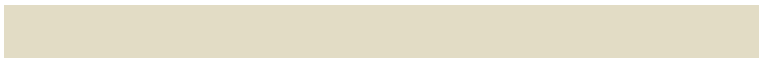
4293318635

Rectangle

The Rectangle color scheme consists of four colors that form a rectangle on the color wheel.



4294104779



4293057733



4290896364



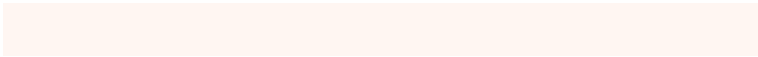
4292140018

Sweetspot

The Sweet Spot groups the original color and five complimentary colors.



4294104779



4294964978



4294101992



4286610040



4278190080



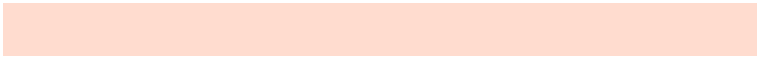
4286611584

Same Dimension

The Same Dimension uses a secret algorithm to generate beautiful new colors.



4294104779



4294958287



4294109643



4286082924



4290262016



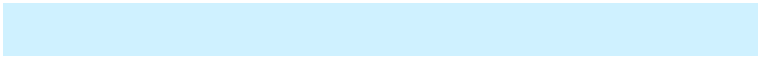
4281864192

Inverse Universe

The Inverse Universe completely reimagines the original color for something new.



4291553266



4291817983



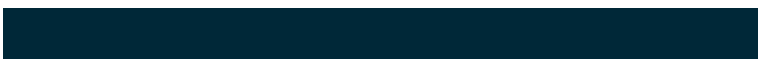
4291548402



4285297784



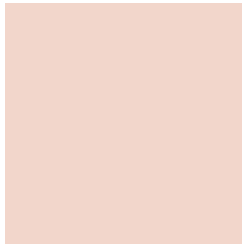
4278224056



4278200376

Previews

White Background



This preview shows how the Android color 4294104779 looks on a white background.

Color Contrast Check

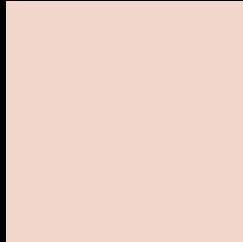
Large Text (above 18pt) WCAG AA × Fail

Any Text WCAG AA × Fail

Large Text (above 18pt) WCAG AAA × Fail

Any Text WCAG AAA × Fail

Black Background



This preview shows how the Android color 4294104779 looks on a black background.

Color Contrast Check

Large Text (above 18pt) WCAG AA ✓ Pass

Any Text WCAG AA ✓ Pass

Large Text (above 18pt) WCAG AAA ✓ Pass

Any Text WCAG AAA ✓ Pass

If you want to check with other color combinations, try the [Color Contrast Checker](#).

Android 4294104779 Background



This preview shows how black text looks on a background with the Android color 4294104779.

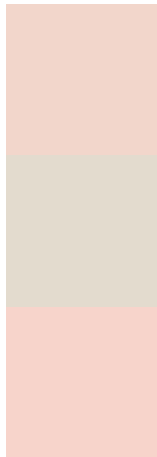


This preview shows how white text looks on a background with the Android color 4294104779.

Color Blindness Simulation

Color vision deficiency is a very complex topic, and I could not describe the different causes any better than Wikipedia does, so if you want to learn more, you should check out their [article about color blindness](#).

Dichromacy



Original Color
4294104779

Protanopia
4293123022

Deuteranopia
4294431947



Tritanopia
4294300387

Trichromacy



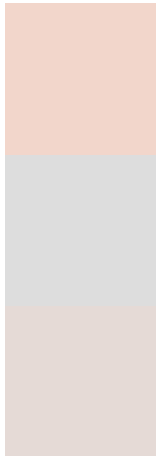
Original Color
4294104779

Protanomaly
4293450189

Deuteranomaly
4294301131

Tritanomaly
4294235098

Monochromacy



Original Color
4294104779

Achromatopsia
4292730333

Achromatomaly
4293253846

CSS Examples

Text

The CSS property to change the color of the text to Android 4294104779 is called "color". The color property can be set on classes, ids or directly on the HTML element.

This example shows how text in the color `rgb(242, 214, 203)` looks like.

```
.text, #text, p{  
    color:rgb(242, 214, 203)  
}
```

If you want to add a text shadow in that color use the text-shadow property, you can generate a text shadow directly with our [CSS Text Shadow Generator](#).

Here you see how black text with a 4 pixel rgb(242, 214, 203) colored shadow looks like.

```
.shadow{ text-shadow: 4px 4px 2px rgb(242, 214, 203) }
```

Border

The CSS property to change the border of an element to Android 4294104779 is called "border". The border property can be set on classes, ids or directly on the HTML element.

This example shows the color as border, it can be applied via the CSS property "border" or "border-color".

```
.border, #border, table{ border:4px solid rgb(242, 214, 203) }
```

If only the border color should be changed use the property `border-color`.

```
.border{ border-color:rgb(242, 214, 203) }
```

If you want to add a box shadow in that color use:

Here you see how a box with a 4 pixel `rgb(242, 214, 203)` colored shadow looks like.

```
.boxshadow{ -moz-box-shadow:4px 4px 4px  
4px rgb(242, 214, 203); -webkit-box-  
shadow:4px 4px 4px 4px rgb(242, 214, 203);  
box-shadow:4px 4px 4px 4px rgb(242, 214,  
203) }
```

Background

The CSS property to change the background color of an element to Android 4294104779 is called "background". The background property can be set on classes, ids or directly on the HTML element.

```
.background, #background, body{  
background: rgb(242, 214, 203) }
```

If only the background color should be changed can be used:

```
.background{ background-color: rgb(242,  
214, 203) }
```

This example shows the color as background, it is applied via the CSS property "background".

To optimize and compress your CSS code, you can use our [online CSS compressor and optimizer](#) based on csstidy. If you want to create a linear or radial gradient as background or border, check our [CSS Gradient Generator](#).

Hey! You found this booklet interesting? Support Converting Colors with the new Membership Option!

The pro membership hides all ads, plus gives you double the colors in the color bucket, and more awesome pro features!

[Learn more, Memberships starting at \\$2.50/m!](#)

**Follow me
on Twitter!**

@ConvertingColor