

Converting Colors

Android(4294106585)

Have a look what the booklet for
Android(4294106585) contains.

Android(4294106585)	3
<i>Conversions</i>	4
<i>Details</i>	6
<i>Harmonies</i>	11
<i>Previews</i>	23
<i>Color Blindness Simulation</i>	26
<i>CSS Examples</i>	29

Color

Android(4294106585)

Conversions

Conversions Part 1

Format	Color
Hex	F2DDD9
RGB	242, 221, 217
RGB Percent	95%, 87%, 85%
CMY	0.0510, 0.1333, 0.1490
CMYK	0.00, 0.09, 0.10, 0.05
HSL	10°, 49%, 90%
HSV	10°, 10%, 95%
XYZ	74.9988, 75.5999, 76.2850
YIQ	226.8230, 13.8000, 3.2080

Conversions

Conversions Part 2

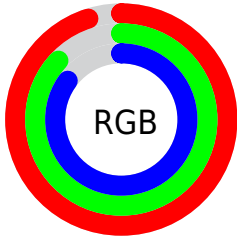
Format	Color
R _Y B	242, 222, 217
Decimal	15916505
CIE Lab	89.67, 6.55, 4.56
CIE LCh	90, 7.980, 34.871
Yxy	75.5999, 0.3306, 0.3332
Android (android.graphics.Color)	4294106585 (0xFFFF2DDD9)
YUV	226.8230, -4.8427, 13.3102
Hunter-Lab	86.9482, 1.8091, 8.8450

Details

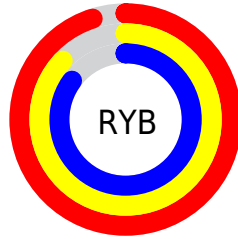
The Android color `4294106585` is a light color, and the websafe version is hex `CCCCCC`. A complement of this color would be `4292472562`, and the grayscale version is `4293125091`.

A 20% lighter version of the original color is `4294967295`, and `4290422434` is the 20% darker color. If you saturate the color by 10%, you get `4294101441`, and if you desaturate by 10%, it is `4294111729`.

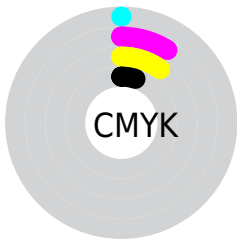
Distribution



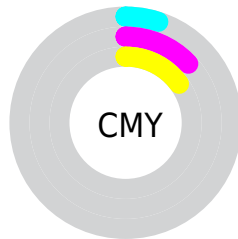
- Red (95%)
- Green (87%)
- Blue (85%)



- Red (95%)
- Yellow (87%)
- Blue (85%)



- Cyan (0%)
- Magenta (9%)
- Yellow (10%)
- Black (5%)



- Cyan (5%)
- Magenta (13%)
- Yellow (15%)

Brightness & Saturation Gradients

These gradients show how the Android color 4294106585 changes by changing the brightness by 10 percent. The first figure shows a shift by +10% for each color and the second figure -10%.

Similar to the brightness gradients but the following saturation gradients show a change of the Android color 4294106585 by changing the saturation by 10% instead.

 4294106585

 4294106585

4294967295

 4292264381

 4290422434

 4288646280

 4286870127

 4285225558

 4283646527

 4282068009

 4280620821

 4279042048

 4294106585

 4294106585

 4294101441

 4294111729

 4294096041

 4294115327

 4294090896

 4294085752

 4294080352

 4294075208

 4294070064

 4294064663

 4294059776

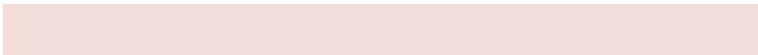
Harmonies

Analogous

The Analogous color harmony consists of three colors that are next to each other on the color wheel.



4294106336



4294106585



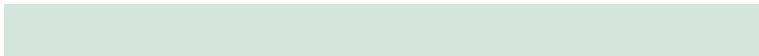
4293844948

Triad

The Triadic color harmony groups three colors that are evenly spaced from another and form a triangle on the color wheel.



4294106585



4292273627



4292600560

Complementary

The Complementary color scheme is a pair of colors which are on the opposite of each other on the color wheel.



4294106585



4292472562

Split Complementary

Split-complementary colors differ from the complementary color scheme. The scheme consists of three colors, the original color and two neighbors of the complement color.



4292076783



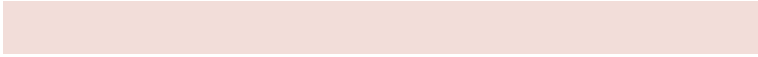
4294106585



4291880674

Square

The Square scheme is like the rectangle color scheme, but the four colors are evenly spaced on the color wheel.



4294106585



4292797653



4291815146



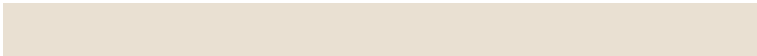
4293255150

Rectangle

The Rectangle color scheme consists of four colors that form a rectangle on the color wheel.



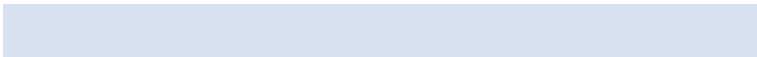
4294106585



4293517522



4291815146



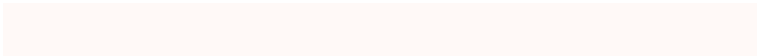
4292403952

Sweetspot

The Sweet Spot groups the original color and five complimentary colors.



4294106585



4294965751



4294105582



4286610298



4278190080



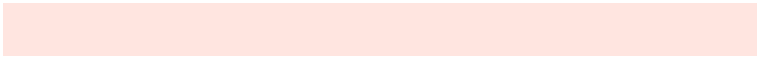
4286611584

Same Dimension

The Same Dimension uses a secret algorithm to generate beautiful new colors.



4294106585



4294960608



4294109657



4286082668



4290256128



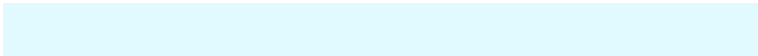
4281862400

Inverse Universe

The Inverse Universe completely reimagines the original color for something new.



4292472562



4292934399



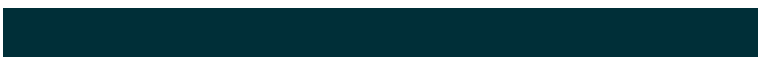
4292469490



4285298296



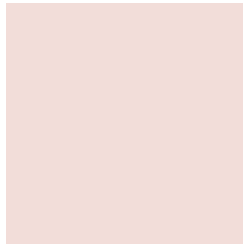
4278229688



4278202168

Previews

White Background



This preview shows how the Android color 4294106585 looks on a white background.

Color Contrast Check

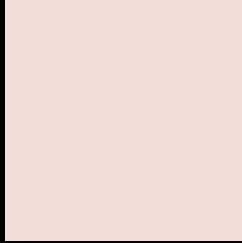
Large Text (above 18pt) WCAG AA × Fail

Any Text WCAG AA × Fail

Large Text (above 18pt) WCAG AAA × Fail

Any Text WCAG AAA × Fail

Black Background



This preview shows how the Android color 4294106585 looks on a black background.

Color Contrast Check

Large Text (above 18pt) WCAG AA ✓ Pass

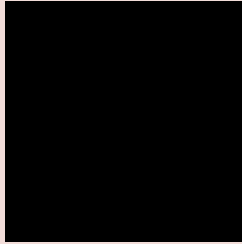
Any Text WCAG AA ✓ Pass

Large Text (above 18pt) WCAG AAA ✓ Pass

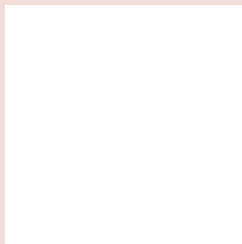
Any Text WCAG AAA ✓ Pass

If you want to check with other color combinations, try the [Color Contrast Checker](#).

Android 4294106585 Background



This preview shows how black text looks on a background with the Android color 4294106585.



This preview shows how white text looks on a background with the Android color 4294106585.

Color Blindness Simulation

Color vision deficiency is a very complex topic, and I could not describe the different causes any better than Wikipedia does, so if you want to learn more, you should check out their [article about color blindness](#).

Dichromacy

	Original Color 4294106585
	Protanopia 4293386715
	Deuteranopia 4294630106



Tritanopia
4294302443

Trichromacy



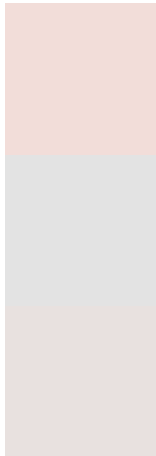
Original Color
4294106585

Protanomaly
4293648602

Deuteranomaly
4294433754

Tritanomaly
4294237156

Monochromacy



Original Color
4294106585

Achromatopsia
4293125091

Achromatomaly
4293452255

CSS Examples

Text

The CSS property to change the color of the text to Android 4294106585 is called "color". The color property can be set on classes, ids or directly on the HTML element.

This example shows how text in the color `rgb(242, 221, 217)` looks like.

```
.text, #text, p{  
    color:rgb(242, 221, 217)  
}
```

If you want to add a text shadow in that color use the text-shadow property, you can generate a text shadow directly with our [CSS Text Shadow Generator](#).

Here you see how black text with a 4 pixel rgb(242, 221, 217) colored shadow looks like.

```
.shadow{ text-shadow: 4px 4px 2px rgb(242, 221, 217) }
```

Border

The CSS property to change the border of an element to Android 4294106585 is called "border". The border property can be set on classes, ids or directly on the HTML element.

This example shows the color as border, it can be applied via the CSS property "border" or "border-color".

```
.border, #border, table{ border:4px solid rgb(242, 221, 217) }
```

If only the border color should be changed use the property border-color.

```
.border{ border-color:rgb(242, 221, 217) }
```

If you want to add a box shadow in that color use:

Here you see how a box with a 4 pixel rgb(242, 221, 217) colored shadow looks like.

```
.boxshadow{ -moz-box-shadow:4px 4px 4px  
4px rgb(242, 221, 217); -webkit-box-  
shadow:4px 4px 4px 4px rgb(242, 221, 217);  
box-shadow:4px 4px 4px 4px rgb(242, 221,  
217) }
```

Background

The CSS property to change the background color of an element to Android 4294106585 is called "background". The background property can be set on classes, ids or directly on the HTML element.

```
.background, #background, body{  
background: rgb(242, 221, 217) }
```

If only the background color should be changed can be used:

```
.background{ background-color: rgb(242,  
221, 217) }
```

This example shows the color as background, it is applied via the CSS property "background".

To optimize and compress your CSS code, you can use our [online CSS compressor and optimizer](#) based on csstidy. If you want to create a linear or radial gradient as background or border, check our [CSS Gradient Generator](#).

Hey! You found this booklet interesting? Support Converting Colors with the new Membership Option!

The pro membership hides all ads, plus gives you double the colors in the color bucket, and more awesome pro features!

[Learn more, Memberships starting at \\$2.50/m!](#)

**Follow me
on Twitter!**

@ConvertingColor