

Converting Colors

Android(4294107872)

Have a look what the booklet for
Android(4294107872) contains.

Android(4294107872)	3
<i>Conversions</i>	4
<i>Details</i>	6
<i>Harmonies</i>	11
<i>Previews</i>	23
<i>Color Blindness Simulation</i>	26
<i>CSS Examples</i>	29

Color

Android(4294107872)

Conversions

Conversions Part 1

Format	Color
Hex	F2E2E0
RGB	242, 226, 224
RGB Percent	95%, 89%, 88%
CMY	0.0510, 0.1137, 0.1216
CMYK	0.00, 0.07, 0.07, 0.05
HSL	7°, 41%, 91%
HSV	7°, 7%, 95%
XYZ	77.2689, 78.6518, 81.6298
YIQ	230.5560, 10.1780, 2.7700

Conversions

Conversions Part 2

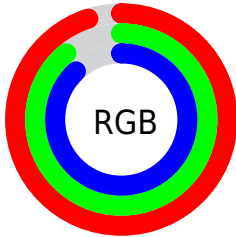
Format	Color
R _Y B	242, 226, 224
Decimal	15917792
CIE Lab	91.08, 5.11, 2.93
CIE LCh	91, 5.892, 29.781
Yxy	78.6518, 0.3253, 0.3311
Android (android.graphics.Color)	4294107872 (0xFF2E2E0)
YUV	230.5560, -3.2321, 10.0364
Hunter-Lab	88.6858, 0.3206, 7.5073

Details

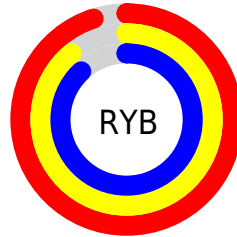
The Android color `4294107872` is a light color, and the websafe version is hex `FFFFFF`. A complement of this color would be `4292931826`, and the grayscale version is `4293388263`.

A 20% lighter version of the original color is `4294967295`, and `4290423721` is the 20% darker color. If you saturate the color by 10%, you get `4294102216`, and if you desaturate by 10%, it is `4294113528`.

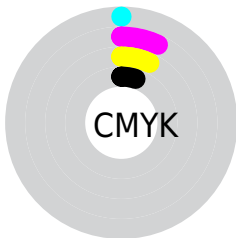
Distribution



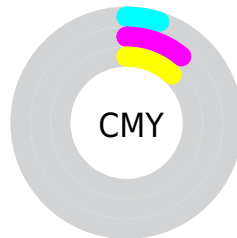
- Red (95%)
- Green (89%)
- Blue (88%)



- Red (95%)
- Yellow (89%)
- Blue (88%)



- Cyan (0%)
- Magenta (7%)
- Yellow (7%)
- Black (5%)



- Cyan (5%)
- Magenta (11%)
- Yellow (12%)

Brightness & Saturation Gradients

These gradients show how the Android color 4294107872 changes by changing the brightness by 10 percent. The first figure shows a shift by +10% for each color and the second figure -10%.

Similar to the brightness gradients but the following saturation gradients show a change of the Android color 4294107872 by changing the saturation by 10% instead.

 4294107872

 4294107872

4294967295

 4292265668

 4290423721

 4288647310

 4286936949

 4285226588

 4283647557

 4282134575

 4280687386

 4279369728

 4294107872

 4294107872

 4294102216

 4294113528

 4294096816

 4294115327

 4294091159

 4294085759

 4294080103

 4294074703

 4294069047

 4294063646

 4294057990

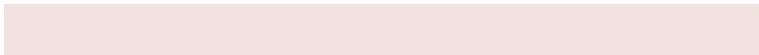
Harmonies

Analogous

The Analogous color harmony consists of three colors that are next to each other on the color wheel.



4294042342



4294107872



4293977052

Triad

The Triadic color harmony groups three colors that are evenly spaced from another and form a triangle on the color wheel.



4294107872



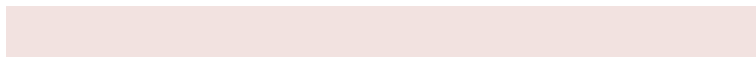
4292798688



4292929265

Complementary

The Complementary color scheme is a pair of colors which are on the opposite of each other on the color wheel.



4294107872



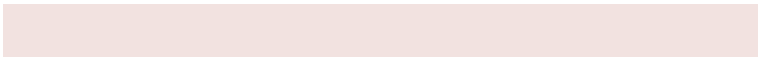
4292931826

Split Complementary

Split-complementary colors differ from the complementary color scheme. The scheme consists of three colors, the original color and two neighbors of the complement color.



4292536559



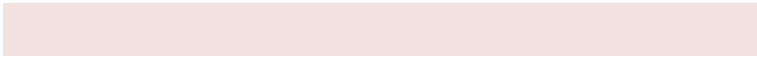
4294107872



4292471269

Square

The Square scheme is like the rectangle color scheme, but the four colors are evenly spaced on the color wheel.



4294107872



4293191644



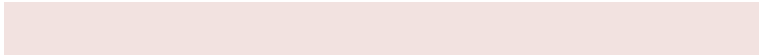
4292405739



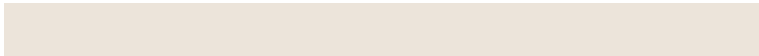
4293387503

Rectangle

The Rectangle color scheme consists of four colors that form a rectangle on the color wheel.



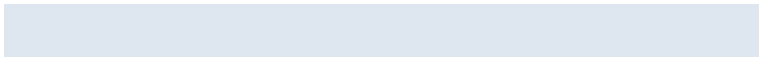
4294107872



4293715162



4292405739



4292798192

Sweetspot

The Sweet Spot groups the original color and five complimentary colors.



4294107872



4294966010



4294107376



4286610813



4278190080



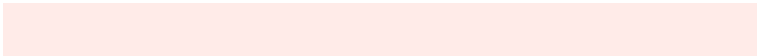
4286611584

Same Dimension

The Same Dimension uses a secret algorithm to generate beautiful new colors.



4294107872



4294962152



4294110176



4286082412



4290253824



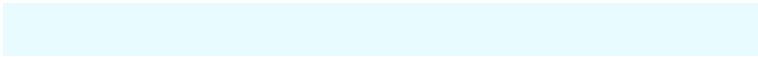
4281861632

Inverse Universe

The Inverse Universe completely reimagines the original color for something new.



4292931826



4293459199



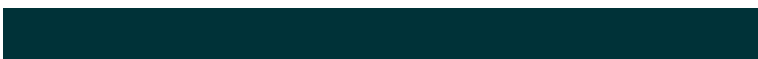
4292929522



4285298552



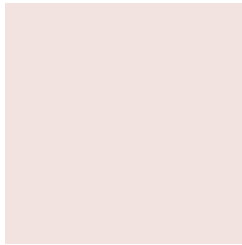
4278231992



4278202936

Previews

White Background



This preview shows how the Android color 4294107872 looks on a white background.

Color Contrast Check

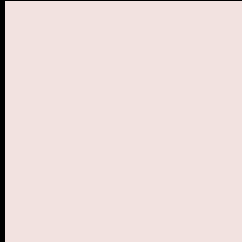
Large Text (above 18pt) WCAG AA × Fail

Any Text WCAG AA × Fail

Large Text (above 18pt) WCAG AAA × Fail

Any Text WCAG AAA × Fail

Black Background



This preview shows how the Android color 4294107872 looks on a black background.

Color Contrast Check

Large Text (above 18pt) WCAG AA ✓ Pass

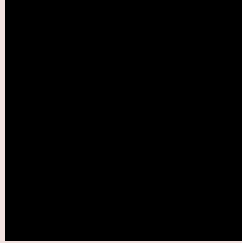
Any Text WCAG AA ✓ Pass

Large Text (above 18pt) WCAG AAA ✓ Pass

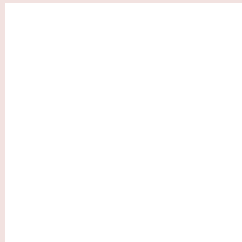
Any Text WCAG AAA ✓ Pass

If you want to check with other color combinations, try the [Color Contrast Checker](#).

Android 4294107872 Background



This preview shows how black text looks on a background with the Android color 4294107872.



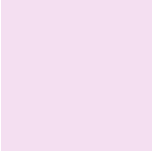
This preview shows how white text looks on a background with the Android color 4294107872.

Color Blindness Simulation

Color vision deficiency is a very complex topic, and I could not describe the different causes any better than Wikipedia does, so if you want to learn more, you should check out their [article about color blindness](#).

Dichromacy

	Original Color 4294107872
	Protanopia 4293584097
	Deuteranopia 4294827745



Tritanopia
4294238193

Trichromacy



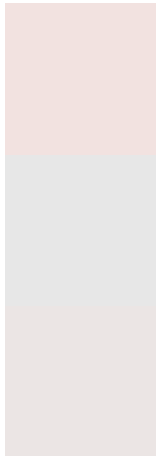
Original Color
4294107872

Protanomaly
4293780449

Deuteranomaly
4294565857

Tritanomaly
4294172907

Monochromacy



Original Color
4294107872

Achromatopsia
4293388263

Achromatomaly
4293649892

CSS Examples

Text

The CSS property to change the color of the text to Android 4294107872 is called "color". The color property can be set on classes, ids or directly on the HTML element.

This example shows how text in the color `rgb(242, 226, 224)` looks like.

```
.text, #text, p{  
    color:rgb(242, 226, 224)  
}
```

If you want to add a text shadow in that color use the text-shadow property, you can generate a text shadow directly with our [CSS Text Shadow Generator](#).

Here you see how black text with a 4 pixel rgb(242, 226, 224) colored shadow looks like.

```
.shadow{ text-shadow: 4px 4px 2px rgb(242, 226, 224) }
```

Border

The CSS property to change the border of an element to Android 4294107872 is called "border". The border property can be set on classes, ids or directly on the HTML element.

This example shows the color as border, it can be applied via the CSS property "border" or "border-color".

```
.border, #border, table{ border:4px solid rgb(242, 226, 224) }
```

If only the border color should be changed use the property `border-color`.

```
.border{ border-color:rgb(242, 226, 224) }
```

If you want to add a box shadow in that color use:

Here you see how a box with a 4 pixel `rgb(242, 226, 224)` colored shadow looks like.

```
.boxshadow{ -moz-box-shadow:4px 4px 4px  
4px rgb(242, 226, 224); -webkit-box-  
shadow:4px 4px 4px 4px rgb(242, 226, 224);  
box-shadow:4px 4px 4px 4px rgb(242, 226,  
224) }
```

Background

The CSS property to change the background color of an element to Android 4294107872 is called "background". The background property can be set on classes, ids or directly on the HTML element.

```
.background, #background, body{  
background: rgb(242, 226, 224) }
```

If only the background color should be changed can be used:

```
.background{ background-color: rgb(242,  
226, 224) }
```

This example shows the color as background, it is applied via the CSS property "background".

To optimize and compress your CSS code, you can use our [online CSS compressor and optimizer](#) based on csstidy. If you want to create a linear or radial gradient as background or border, check our [CSS Gradient Generator](#).

Hey! You found this booklet interesting? Support Converting Colors with the new Membership Option!

The pro membership hides all ads, plus gives you double the colors in the color bucket, and more awesome pro features!

[Learn more, Memberships starting at \\$2.50/m!](#)

**Follow me
on Twitter!**

@ConvertingColor