

Converting Colors

Android(4294126185)

Have a look what the booklet for
Android(4294126185) contains.

Android(4294126185)	3
<i>Conversions</i>	4
<i>Details</i>	6
<i>Harmonies</i>	11
<i>Previews</i>	23
<i>Color Blindness Simulation</i>	26
<i>CSS Examples</i>	29

Color

Android(4294126185)

Conversions

Conversions Part 1

Format	Color
Hex	F32A69
RGB	243, 42, 105
RGB Percent	95%, 16%, 41%
CMY	0.0471, 0.8353, 0.5882
CMYK	0.00, 0.83, 0.57, 0.05
HSL	341°, 89%, 56%
HSV	341°, 83%, 95%
XYZ	40.3399, 21.7305, 15.4329
YIQ	109.2810, 99.5730, 62.2050

Conversions

Conversions Part 2

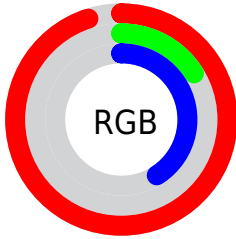
Format	Color
R_{YB}	243, 42, 105
Decimal	15936105
CIE _{Lab}	53.74, 75.15, 15.96
CIE _{LCh}	54, 76.826, 11.993
Yxy	21.7305, 0.5205, 0.2804
Android (android.graphics.Color)	4294126185 (0xFFFF32A69)
YUV	109.2810, -2.1105, 117.2716
Hunter-Lab	46.6160, 72.8898, 13.0025

Details

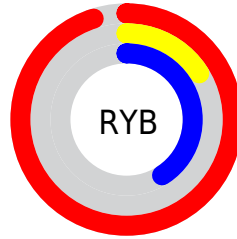
The Android color **4294126185** is a dark color, and the websafe version is hex **FF3366**. The color can be described as dark washed rose. A complement of this color would be **4281004980**, and the grayscale version is **4285361517**.

A 20% lighter version of the original color is **4294930076**, and **4289986619** is the 20% darker color. If you saturate the color by 10%, you get **4294120024**, and if you desaturate by 10%, it is **4294132346**.

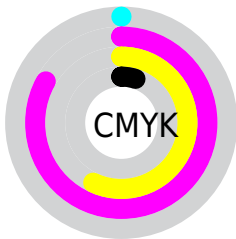
Distribution



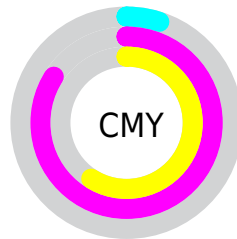
- Red (95%)
- Green (16%)
- Blue (41%)



- Red (95%)
- Yellow (16%)
- Blue (41%)



- Cyan (0%)
- Magenta (83%)
- Yellow (57%)
- Black (5%)



- Cyan (5%)
- Magenta (84%)
- Yellow (59%)

Brightness & Saturation Gradients

These gradients show how the Android color 4294126185 changes by changing the brightness by 10 percent. The first figure shows a shift by +10% for each color and the second figure -10%.

Similar to the brightness gradients but the following saturation gradients show a change of the Android color 4294126185 by changing the saturation by 10% instead.



4294126185



4294126185

4294967295



4292018257



4294930076



4289986619



4294938039



4287889446



4294945490



4285857810



4294953198



4283891715



4294960895



4281860098



4279042048



4278190080



4294126185



4294126185

 4294120024

 4294132346

 4294115404

 4294138762

 4294144923

 4294151084

 4294157244

 4294163661

 4294169822

 4294175982

 4294180863

Harmonies

Analogous

The Analogous color harmony consists of three colors that are next to each other on the color wheel.



4292884651



4294126185



4293086249

Triad

The Triadic color harmony groups three colors that are evenly spaced from another and form a triangle on the color wheel.



4294126185



4281439232



4278227967

Complementary

The Complementary color scheme is a pair of colors which are on the opposite of each other on the color wheel.



4294126185



4281004980

Split Complementary

Split-complementary colors differ from the complementary color scheme. The scheme consists of three colors, the original color and two neighbors of the complement color.



4278229976



4294126185



4278229845

Square

The Square scheme is like the rectangle color scheme, but the four colors are evenly spaced on the color wheel.



4294126185



4286809600



4278230426



4278223103

Rectangle

The Rectangle color scheme consists of four colors that form a rectangle on the color wheel.



4294126185



4291519488



4278230426



4278228982

Sweetspot

The Sweet Spot groups the original color and five complimentary colors.



4294126185



4294950867



4289932019



4286601573



4278190080



4286611584

Same Dimension

The Same Dimension uses a secret algorithm to generate beautiful new colors.



4294126185



4294902610



4294135594



4286213746



4290379834



4282056722

Inverse Universe

The Inverse Universe completely reimagines the original color for something new.



4294126185



4294902610



4280995571



4286213746



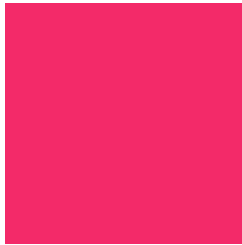
4290379834



4282056722

Previews

White Background



This preview shows how the Android color 4294126185 looks on a white background.

Color Contrast Check

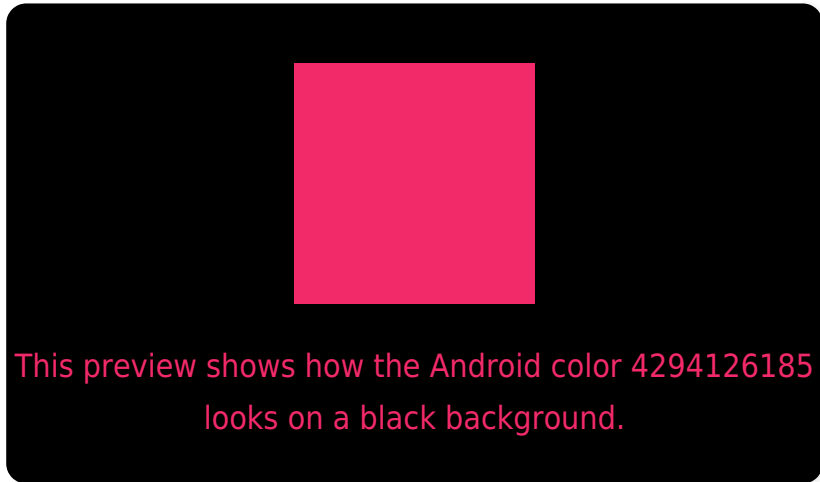
Large Text (above 18pt) WCAG AA ✓ Pass

Any Text WCAG AA ✗ Fail

Large Text (above 18pt) WCAG AAA ✗ Fail

Any Text WCAG AAA ✗ Fail

Black Background



Color Contrast Check

Large Text (above 18pt) WCAG AA ✓ Pass

Any Text WCAG AA ✓ Pass

Large Text (above 18pt) WCAG AAA ✓ Pass

Any Text WCAG AAA × Fail

If you want to check with other color combinations, try the [Color Contrast Checker](#).

Android 4294126185 Background



This preview shows how black text looks on a background with the Android color 4294126185.

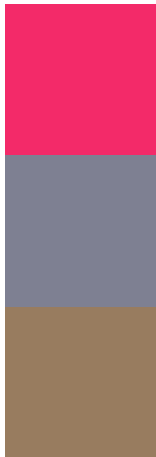


This preview shows how white text looks on a background with the Android color 4294126185.

Color Blindness Simulation

Color vision deficiency is a very complex topic, and I could not describe the different causes any better than Wikipedia does, so if you want to learn more, you should check out their [article about color blindness](#).

Dichromacy

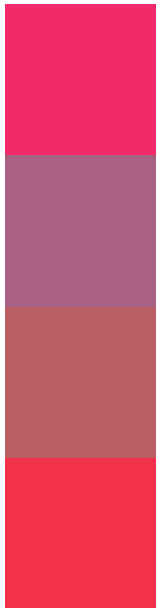


Original Color
4294126185

Protanopia
4286480530

Deuteranopia
4288183391

Trichromacy



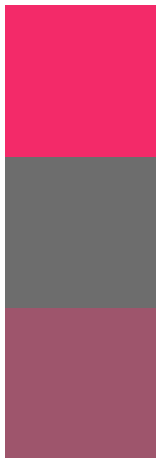
Original Color
4294126185

Protanomaly
4289290627

Deuteranomaly
4290338403

Tritanomaly
4294062666

Monochromacy



Original Color
4294126185

Achromatopsia
4285361517

Achromatomaly
4288566636

CSS Examples

Text

The CSS property to change the color of the text to Android 4294126185 is called "color". The color property can be set on classes, ids or directly on the HTML element.

This example shows how text in the color `rgb(243, 42, 105)` looks like.

```
.text, #text, p{  
    color:rgb(243, 42, 105)  
}
```

If you want to add a text shadow in that color use the text-shadow property, you can generate a text shadow directly with our [CSS Text Shadow Generator](#).

Here you see how black text with a 4 pixel rgb(243, 42, 105) colored shadow looks like.

```
.shadow{ text-shadow: 4px 4px 2px rgb(243, 42, 105) }
```

Border

The CSS property to change the border of an element to Android 4294126185 is called "border". The border property can be set on classes, ids or directly on the HTML element.

This example shows the color as border, it can be applied via the CSS property "border" or "border-color".

```
.border, #border, table{ border:4px solid rgb(243, 42, 105) }
```

If only the border color should be changed use the property border-color.

```
.border{ border-color:rgb(243, 42, 105) }
```

If you want to add a box shadow in that color use:

Here you see how a box with a 4 pixel rgb(243, 42, 105) colored shadow looks like.

```
.boxshadow{ -moz-box-shadow:4px 4px 4px  
4px rgb(243, 42, 105); -webkit-box-  
shadow:4px 4px 4px 4px rgb(243, 42, 105);  
box-shadow:4px 4px 4px 4px rgb(243, 42,  
105) }
```

Background

The CSS property to change the background color of an element to Android 4294126185 is called "background". The background property can be set on classes, ids or directly on the HTML element.

```
.background, #background, body{  
background: rgb(243, 42, 105) }
```

If only the background color should be changed can be used:

```
.background{ background-color: rgb(243, 42,  
105) }
```

This example shows the color as background, it is applied via the CSS property "background".

To optimize and compress your CSS code, you can use our [online CSS compressor and optimizer](#) based on csstidy. If you want to create a linear or radial gradient as background or border, check our [CSS Gradient Generator](#).

Hey! You found this booklet interesting? Support Converting Colors with the new Membership Option!

The pro membership hides all ads, plus gives you double the colors in the color bucket, and more awesome pro features!

[Learn more, Memberships starting at \\$2.50/m!](#)

**Follow me
on Twitter!**

@ConvertingColor