

Converting Colors

Android(4294126194)

Have a look what the booklet for
Android(4294126194) contains.

Android(4294126194)	3
<i>Conversions</i>	4
<i>Details</i>	6
<i>Harmonies</i>	11
<i>Previews</i>	23
<i>Color Blindness Simulation</i>	26
<i>CSS Examples</i>	29

Color

Android(4294126194)

Conversions

Conversions Part 1

Format	Color
Hex	F32A72
RGB	243, 42, 114
RGB Percent	95%, 16%, 45%
CMY	0.0471, 0.8353, 0.5529
CMYK	0.00, 0.83, 0.53, 0.05
HSL	339°, 89%, 56%
HSV	339°, 83%, 95%
XYZ	40.8274, 21.9255, 17.9998
YIQ	110.3070, 96.6840, 65.0040

Conversions

Conversions Part 2

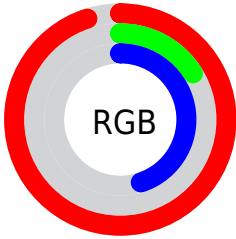
Format	Color
R_{YB}	243, 42, 114
Decimal	15936114
CIE _{Lab}	53.95, 75.76, 10.83
CIE _{LCh}	54, 76.531, 8.139
Yxy	21.9255, 0.5056, 0.2715
Android (android.graphics.Color)	4294126194 (0xFFFF32A72)
YUV	110.3070, 1.8206, 116.3718
Hunter-Lab	46.8247, 73.6945, 9.9857

Details

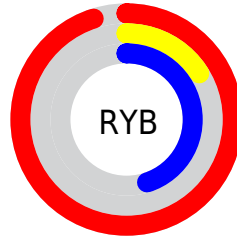
The Android color **4294126194** is a dark color, and the websafe version is hex **FF0066**. The color can be described as middle washed rose. A complement of this color would be **4281004971**, and the grayscale version is **4285427310**.

A 20% lighter version of the original color is **4294930342**, and **4289986627** is the 20% darker color. If you saturate the color by 10%, you get **4294120034**, and if you desaturate by 10%, it is **4294132354**.

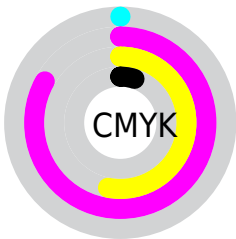
Distribution



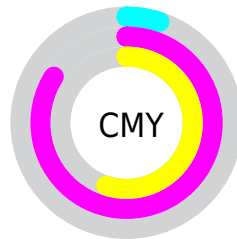
- Red (95%)
- Green (16%)
- Blue (45%)



- Red (95%)
- Yellow (16%)
- Blue (45%)



- Cyan (0%)
- Magenta (83%)
- Yellow (53%)
- Black (5%)



- Cyan (5%)
- Magenta (84%)
- Yellow (55%)

Brightness & Saturation Gradients

These gradients show how the Android color 4294126194 changes by changing the brightness by 10 percent. The first figure shows a shift by +10% for each color and the second figure -10%.

Similar to the brightness gradients but the following saturation gradients show a change of the Android color 4294126194 by changing the saturation by 10% instead.

 4294126194

 4294126194

4294967295

 4292018266

 4294930342

 4289986627

 4294938049

 4287954989

 4294945756

 4285923353

 4294953465

 4283957251

 4294961151

 4281925634

 4279238656

 4278190080

 4294126194

 4294126194

 4294120034

 4294132354

 4294115415

 4294138769

 4294144929

 4294151088

 4294157248

 4294163664

 4294169823

 4294175983

 4294180862

Harmonies

Analogous

The Analogous color harmony consists of three colors that are next to each other on the color wheel.



4292558772



4294126194



4293347378

Triad

The Triadic color harmony groups three colors that are evenly spaced from another and form a triangle on the color wheel.



4294126194



4282487552



4278228476

Complementary

The Complementary color scheme is a pair of colors which are on the opposite of each other on the color wheel.



4294126194



4281004971

Split Complementary

Split-complementary colors differ from the complementary color scheme. The scheme consists of three colors, the original color and two neighbors of the complement color.



4278230226



4294126194



4278229836

Square

The Square scheme is like the rectangle color scheme, but the four colors are evenly spaced on the color wheel.



4294126194



4287398912



4278230418



4278224127

Rectangle

The Rectangle color scheme consists of four colors that form a rectangle on the color wheel.



4294126194



4291911680



4278230418



4278229233

Sweetspot

The Sweet Spot groups the original color and five complimentary colors.



4294126194



4294950870



4289276659



4286601575



4278190080



4286611584

Same Dimension

The Same Dimension uses a secret algorithm to generate beautiful new colors.



4294126194



4294902621



4294133034



4286213747



4290379843



4282056725

Inverse Universe

The Inverse Universe completely reimagines the original color for something new.



4294126194



4294902621



4280998131



4286213747



4290379843



4282056725

Previews

White Background



This preview shows how the Android color 4294126194 looks on a white background.

Color Contrast Check

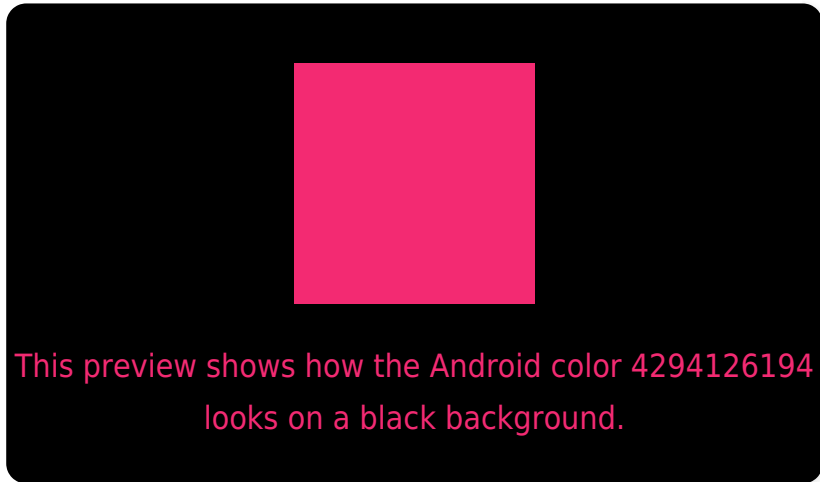
Large Text (above 18pt) WCAG AA ✓ Pass

Any Text WCAG AA ✗ Fail

Large Text (above 18pt) WCAG AAA ✗ Fail

Any Text WCAG AAA ✗ Fail

Black Background



Color Contrast Check

Large Text (above 18pt) WCAG AA ✓ Pass

Any Text WCAG AA ✓ Pass

Large Text (above 18pt) WCAG AAA ✓ Pass

Any Text WCAG AAA × Fail

If you want to check with other color combinations, try the [Color Contrast Checker](#).

Android 4294126194 Background



This preview shows how black text looks on a background with the Android color 4294126194.



This preview shows how white text looks on a background with the Android color 4294126194.

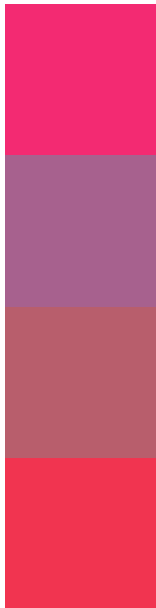
Color Blindness Simulation

Color vision deficiency is a very complex topic, and I could not describe the different causes any better than Wikipedia does, so if you want to learn more, you should check out their [article about color blindness](#).

Dichromacy



Trichromacy



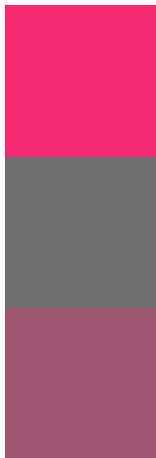
Original Color
4294126194

Protanomaly
4289159566

Deuteranomaly
4290272876

Tritanomaly
4293997648

Monochromacy



Original Color
4294126194

Achromatopsia
4285427310

Achromatomaly
4288566639

CSS Examples

Text

The CSS property to change the color of the text to Android 4294126194 is called "color". The color property can be set on classes, ids or directly on the HTML element.

This example shows how text in the color `rgb(243, 42, 114)` looks like.

```
.text, #text, p{  
    color:rgb(243, 42, 114)  
}
```

If you want to add a text shadow in that color use the text-shadow property, you can generate a text shadow directly with our [CSS Text Shadow Generator](#).

Here you see how black text with a 4 pixel rgb(243, 42, 114) colored shadow looks like.

```
.shadow{ text-shadow: 4px 4px 2px rgb(243, 42, 114) }
```

Border

The CSS property to change the border of an element to Android 4294126194 is called "border". The border property can be set on classes, ids or directly on the HTML element.

This example shows the color as border, it can be applied via the CSS property "border" or "border-color".

```
.border, #border, table{ border:4px solid rgb(243, 42, 114) }
```

If only the border color should be changed use the property border-color.

```
.border{ border-color:rgb(243, 42, 114) }
```

If you want to add a box shadow in that color use:

Here you see how a box with a 4 pixel rgb(243, 42, 114) colored shadow looks like.

```
.boxshadow{ -moz-box-shadow:4px 4px 4px  
4px rgb(243, 42, 114); -webkit-box-  
shadow:4px 4px 4px 4px rgb(243, 42, 114);  
box-shadow:4px 4px 4px 4px rgb(243, 42,  
114) }
```

Background

The CSS property to change the background color of an element to Android 4294126194 is called "background". The background property can be set on classes, ids or directly on the HTML element.

```
.background, #background, body{  
background: rgb(243, 42, 114) }
```

If only the background color should be changed can be used:

```
.background{ background-color: rgb(243, 42,  
114) }
```

This example shows the color as background, it is applied via the CSS property "background".

To optimize and compress your CSS code, you can use our [online CSS compressor and optimizer](#) based on csstidy. If you want to create a linear or radial gradient as background or border, check our [CSS Gradient Generator](#).

Hey! You found this booklet interesting? Support Converting Colors with the new Membership Option!

The pro membership hides all ads, plus gives you double the colors in the color bucket, and more awesome pro features!

[Learn more, Memberships starting at \\$2.50/m!](#)

**Follow me
on Twitter!**

@ConvertingColor