

Converting Colors

Android(4294139256)

Have a look what the booklet for
Android(4294139256) contains.

Android(4294139256)	3
<i>Conversions</i>	4
<i>Details</i>	6
<i>Harmonies</i>	11
<i>Previews</i>	23
<i>Color Blindness Simulation</i>	26
<i>CSS Examples</i>	29

Color

Android(4294139256)

Conversions

Conversions Part 1

Format	Color
Hex	F35D78
RGB	243, 93, 120
RGB Percent	95%, 36%, 47%
CMY	0.0471, 0.6353, 0.5294
CMYK	0.00, 0.62, 0.51, 0.05
HSL	349°, 86%, 66%
HSV	349°, 62%, 95%
XYZ	44.2667, 28.2395, 20.8869
YIQ	140.9280, 80.7330, 40.1970

Conversions

Conversions Part 2

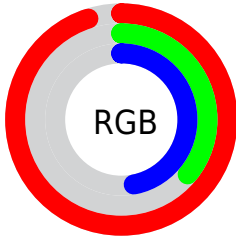
Format	Color
R _{YB}	243, 93, 120
Decimal	15949176
CIE _{Lab}	60.10, 59.53, 15.87
CIE _{LCh}	60, 61.612, 14.925
Y _{xy}	28.2395, 0.4740, 0.3024
Android (android.graphics.Color)	4294139256 (0xFFFF35D78)
Y _{UV}	140.9280, -10.3175, 89.5171
Hunter-Lab	53.1408, 55.6953, 13.8947

Details

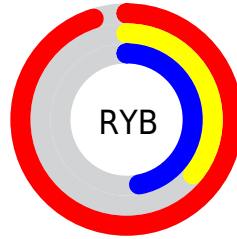
The Android color **4294139256** is a light color, and the websafe version is hex **FF6699**. The color can be described as light muted rose. A complement of this color would be **4284347352**, and the grayscale version is **4287466893**.

A 20% lighter version of the original color is **4294940076**, and **4290060104** is the 20% darker color. If you saturate the color by 10%, you get **4294133092**, and if you desaturate by 10%, it is **4294145420**.

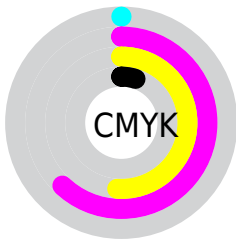
Distribution



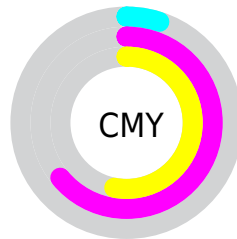
- Red (95%)
- Green (36%)
- Blue (47%)



- Red (95%)
- Yellow (36%)
- Blue (47%)



- Cyan (0%)
- Magenta (62%)
- Yellow (51%)
- Black (5%)



- Cyan (5%)
- Magenta (64%)
- Yellow (53%)

Brightness & Saturation Gradients

These gradients show how the Android color 4294139256 changes by changing the brightness by 10 percent. The first figure shows a shift by +10% for each color and the second figure -10%.

Similar to the brightness gradients but the following saturation gradients show a change of the Android color 4294139256 by changing the saturation by 10% instead.

 4294139256

 4294139256


4294967295

 4292100191

 4294940076

 4290060104

 4294947527

 4288086066

 4294954979

 4286119965

 4294962431

 4284219395

 4282449923

 4280221697

 4278190080

 4294139256

 4294139256

 4294133092

 4294145420

 4294126672

 4294151840

 4294120508

 4294158004

 4294115372

 4294164168

 4294170332

 4294176752

 4294180863

Harmonies

Analogous

The Analogous color harmony consists of three colors that are next to each other on the color wheel.



4293222831



4294139256



4293226054

Triad

The Triadic color harmony groups three colors that are evenly spaced from another and form a triangle on the color wheel.



4294139256



4283736894



4278231034

Complementary

The Complementary color scheme is a pair of colors which are on the opposite of each other on the color wheel.



4294139256



4284347352

Split Complementary

Split-complementary colors differ from the complementary color scheme. The scheme consists of three colors, the original color and two neighbors of the complement color.



4278233309



4294139256



4278233459

Square

The Square scheme is like the rectangle color scheme, but the four colors are evenly spaced on the color wheel.



4294139256



4287862550



4278234027



4283993850

Rectangle

The Rectangle color scheme consists of four colors that form a rectangle on the color wheel.



4294139256



4291853610



4278234027



4278232051

Sweetspot

The Sweet Spot groups the original color and five complimentary colors.



4294139256



4294954967



4292304371



4286603879



4278190080



4286611584

Same Dimension

The Same Dimension uses a secret algorithm to generate beautiful new colors.



4294139256



4294918756



4294151261



4286213744



4290379810



4282056715

Inverse Universe

The Inverse Universe completely reimagines the original color for something new.



4294139256



4294918756



4284335091



4286213744



4290379810



4282056715

Previews

White Background



This preview shows how the Android color 4294139256 looks on a white background.

Color Contrast Check

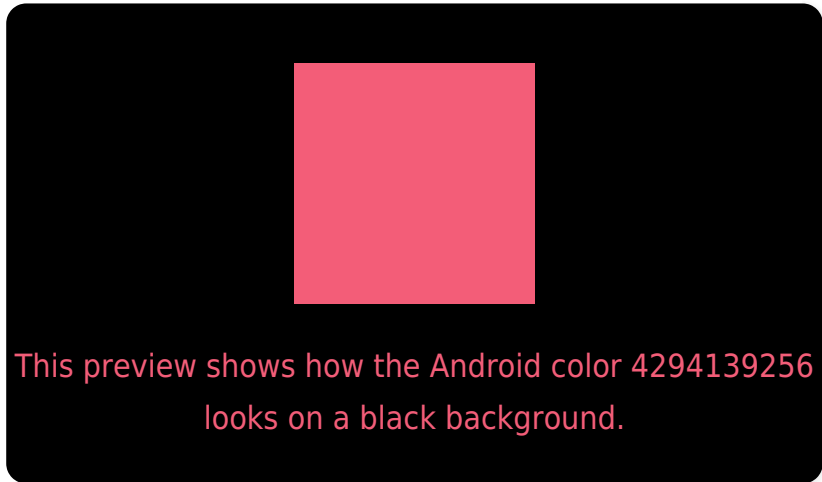
Large Text (above 18pt) WCAG AA ✓ Pass

Any Text WCAG AA ✗ Fail

Large Text (above 18pt) WCAG AAA ✗ Fail

Any Text WCAG AAA ✗ Fail

Black Background



Color Contrast Check

Large Text (above 18pt) WCAG AA ✓ Pass

Any Text WCAG AA ✓ Pass

Large Text (above 18pt) WCAG AAA ✓ Pass

Any Text WCAG AAA × Fail

If you want to check with other color combinations, try the [Color Contrast Checker](#).

Android 4294139256 Background



This preview shows how black text looks on a background with the Android color 4294139256.



This preview shows how white text looks on a background with the Android color 4294139256.

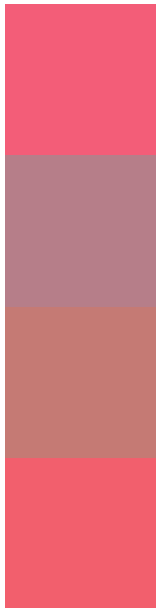
Color Blindness Simulation

Color vision deficiency is a very complex topic, and I could not describe the different causes any better than Wikipedia does, so if you want to learn more, you should check out their [article about color blindness](#).

Dichromacy



Trichromacy



Original Color
4294139256

Protanomaly
4290150025

Deuteranomaly
4291132020

Tritanomaly
4294074221

Monochromacy



Original Color
4294139256

Achromatopsia
4287466893

Achromatomaly
4289887365

CSS Examples

Text

The CSS property to change the color of the text to Android 4294139256 is called "color". The color property can be set on classes, ids or directly on the HTML element.

This example shows how text in the color `rgb(243, 93, 120)` looks like.

```
.text, #text, p{  
    color:rgb(243, 93, 120)  
}
```

If you want to add a text shadow in that color use the text-shadow property, you can generate a text shadow directly with our [CSS Text Shadow Generator](#).

Here you see how black text with a 4 pixel rgb(243, 93, 120) colored shadow looks like.

```
.shadow{ text-shadow: 4px 4px 2px rgb(243, 93, 120) }
```

Border

The CSS property to change the border of an element to Android 4294139256 is called "border". The border property can be set on classes, ids or directly on the HTML element.

This example shows the color as border, it can be applied via the CSS property "border" or "border-color".

```
.border, #border, table{ border:4px solid rgb(243, 93, 120) }
```

If only the border color should be changed use the property `border-color`.

```
.border{ border-color:rgb(243, 93, 120) }
```

If you want to add a box shadow in that color use:

Here you see how a box with a 4 pixel `rgb(243, 93, 120)` colored shadow looks like.

```
.boxshadow{ -moz-box-shadow:4px 4px 4px  
4px rgb(243, 93, 120); -webkit-box-  
shadow:4px 4px 4px 4px rgb(243, 93, 120);  
box-shadow:4px 4px 4px 4px rgb(243, 93,  
120) }
```

Background

The CSS property to change the background color of an element to Android 4294139256 is called "background". The background property can be set on classes, ids or directly on the HTML element.

```
.background, #background, body{  
background: rgb(243, 93, 120) }
```

If only the background color should be changed can be used:

```
.background{ background-color: rgb(243, 93,  
120) }
```

This example shows the color as background, it is applied via the CSS property "background".

To optimize and compress your CSS code, you can use our [online CSS compressor and optimizer](#) based on csstidy. If you want to create a linear or radial gradient as background or border, check our [CSS Gradient Generator](#).

Hey! You found this booklet interesting? Support Converting Colors with the new Membership Option!

The pro membership hides all ads, plus gives you double the colors in the color bucket, and more awesome pro features!

[Learn more, Memberships starting at \\$2.50/m!](#)

**Follow me
on Twitter!**

@ConvertingColor